

Latitude

39° 16'

81° 12' 30"

Longitude

→ 7.5' loc
Klc 1123196

Topo Location

7.5' Loc. 1.78S 15' Loc. 1.78S
1.51W (calc.) 3.74W

Company _____

Farm TN Middleton 2

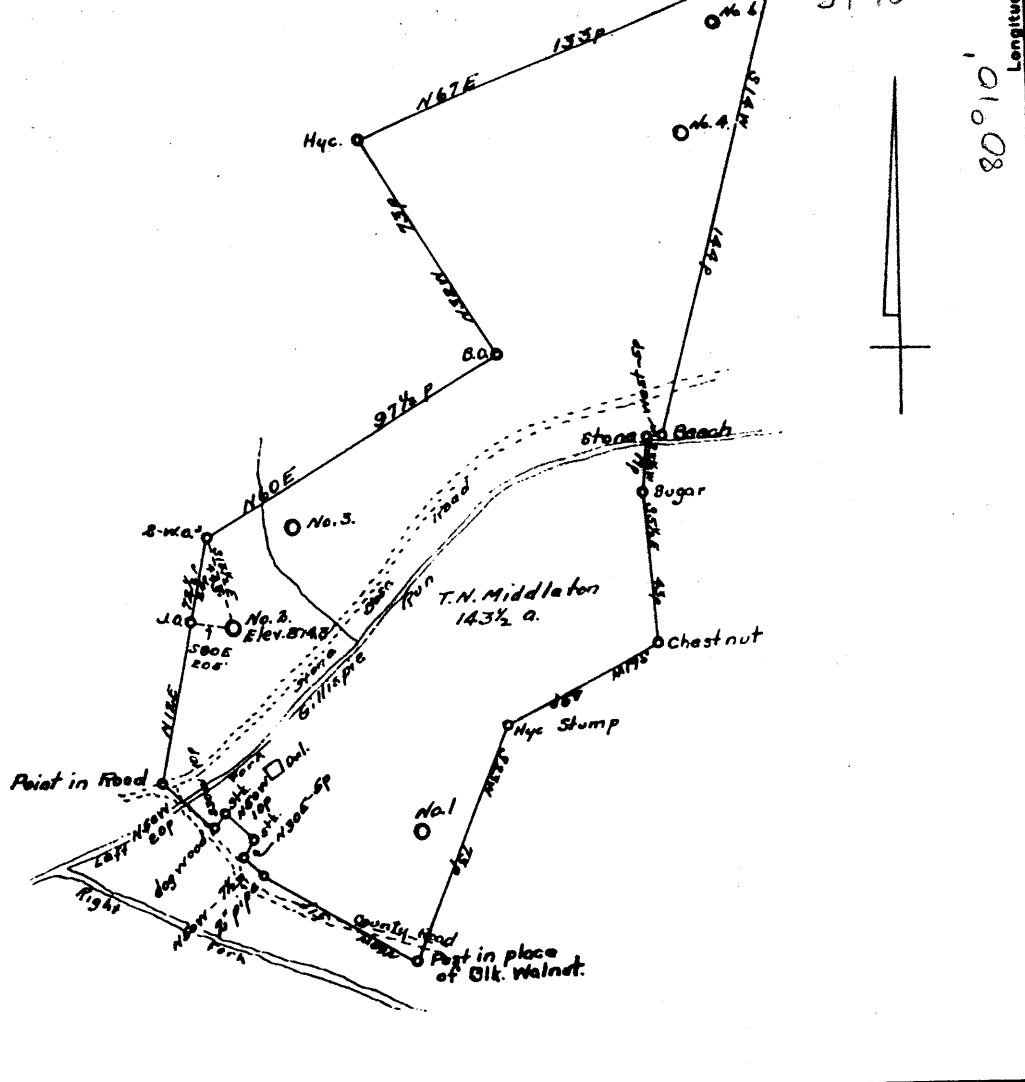
15' Quad Harrisville WC
(sec.)

7.5' Quad Cairo

District Brent

WELL LOCATION PLAT

County 085 Permit 30254



Company BRISTOL OIL & GAS Co.
 Address 212 Oliver Bldg. PITTSBURG, PA.
 Farm T. N. MIDDLETON
 Tract Acres 143 1/2 Lease No. _____
 Well (Farm) No. Two Serial No. _____
 Quadrangle HARRISVILLE
 County RITCHIE
 District GRANT
 Engineer O. W. Barnhart, C.S.P.C.
 Engineer's Registration No. _____
 File No. _____ Drawing No. _____
 Date April 21, 1936 Scale 1 inch = 40 poles

STATE OF WEST VIRGINIA
 DEPARTMENT OF MINES
 OIL AND GAS DIVISION
 CHARLESTON

WELL LOCATION MAP
 FILE NO. RIT-284A

+ Denotes location of well on United States Topographic Maps, scale 1 to 62,500, latitude and longitude lines being represented by border lines as shown.

- Denotes one inch spaces on border line of original tracing.

Pit
30254

Name	Color	Character	Oil, Gas or Water	Top	Bottom	Thickness	Total Depth	Remarks
Conductor					12			
Black Slate				925	945	20		
Slate & Shells				945	1115	170		
Sand				1115	1175	60		
Slate				1175	1200	25		
Sand				1200	1275	75		
Black Slate				1275	1325	50		
Sand				1325	1385	60		
Slate				1385	1495	110		
Sand - Top				1495	1526	31		
Little Water				1670				
Big Water				1705				
Bottom - Sand				1726				
Big Lime				1726	1759	33		1729' - 6 5/8"
Big Injun Sand - Top				1759				
Little Gas			Gas	1861				
Little Oil			Oil	1874				
Big Injun Sand - Bottom					1874			
Big Slate				1874	2256	382		
Berea Sand				2256	2264	8	2274	

shot
Well was ~~not~~ shot at 2256 feet; well was shot at feet.

Salt
Fresh water at feet; salt
fresh water at feet.

producing
Well was ~~not~~ hole.

BRISTOL OIL & GAS COMPANY

June 9th 1936 Date Approved
Owner

NOTE: All bottom formations must be noted as indicated above and all key-rocks and oil and gas sands must be recorded under their proper geological names in the district as well as any local names commonly used in the district for such strata.