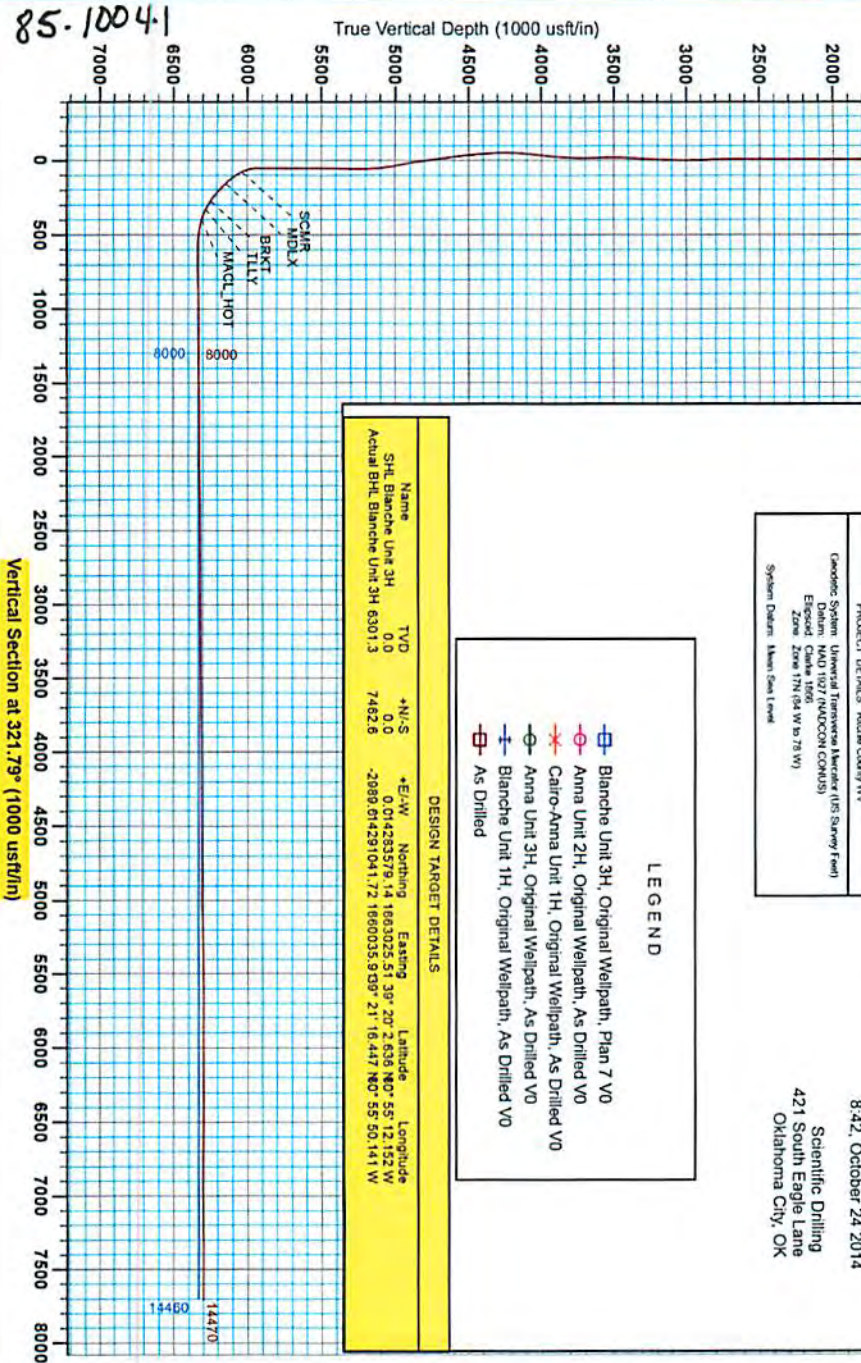




Antero Resources
 Blanche Unit 3H
 Ritchie County WV
 Northing: 14283579.14
 Easting: 1663025.51
 As Drilled



WELL DETAILS: Blanche Unit 3H

N/S	E/W	Northing	Ground Level	960.0	Spot
0.0	0.0	14283579.14	Easting	30° 20' 28.00" N	60° 50' 12.10" W

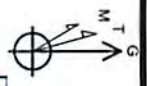
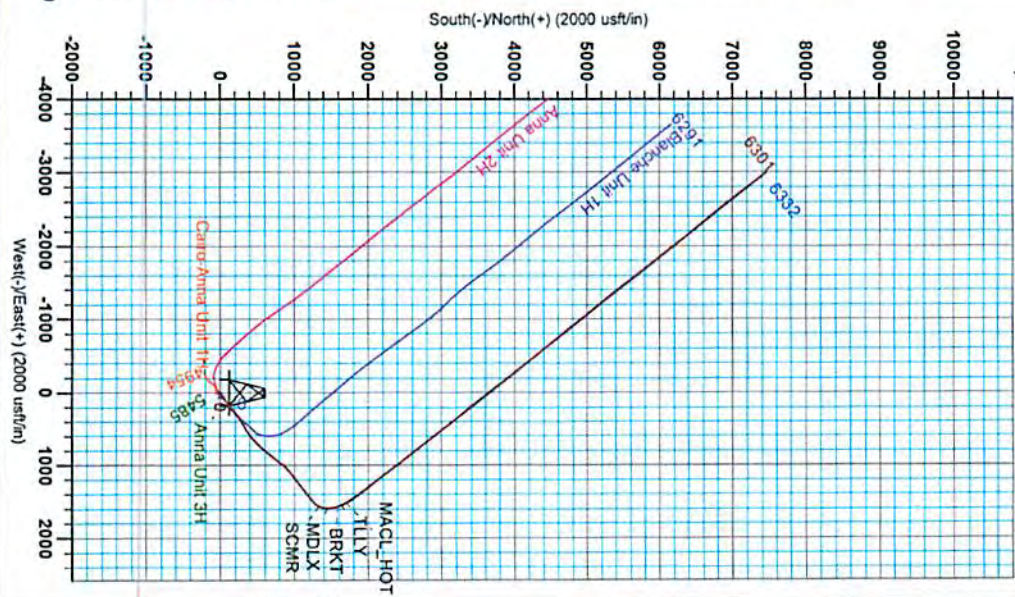
PROJECT DETAILS: Ritchie County, WV
 Geologic System: Universal Terrivexa Marcia (US Survey Feet)
 Elevation: NAD 1983 (FAD/COGN COMUS)
 Zone: Zone 17N (64 W to 76 W)
 System Datum: Mean Sea Level

- LEGEND
- Blanche Unit 3H, Original Wellpath, Plan 7 VO
 - Anna Unit 2H, Original Wellpath, As Drilled VO
 - Cairo-Anna Unit 1H, Original Wellpath, As Drilled VO
 - Anna Unit 3H, Original Wellpath, As Drilled VO
 - Blanche Unit 1H, Original Wellpath, As Drilled VO
 - As Drilled

DESIGN TARGET DETAILS

Name	TVD	+N/-S	+E/-W	Northing	Easting	Latitude	Longitude
SHE Blanche Unit 3H	0.0	0.0	0.0	14283579.14	1663025.51	39° 20' 28.00" N	60° 50' 12.10" W
Actual BHL Blanche Unit 3H 6301.3	7462.6			-2089.014291041	7.21660035.939	21° 16.447' N	65° 50.141' W

Jameson Shadid
 8:42, October 24 2014
 Scientific Drilling
 421 South Eagle Lane
 Oklahoma City, OK



To convert Magnetic North to Grid North:
 Grid North = Magnetic North + 33°
 To convert True North to Grid North:
 Grid North = True North + 0.05°

Approximate to Grid North:
 Magnetic North: -33°
 Magnetic Field Strength: 62470.1nT
 Dip Angle: 66.98°
 Date: 4/9/2013
 Model: IGRF2010

Received
 Office of Oil & Gas
 SEP 14 2015

10/16/2015

85-10041



Antero Resources

Ritchie County WV
Anna Pad
Blanche Unit 3H
Original Wellpath

Design: As Drilled

EOW Completion Report

13 October, 2014



Scientific Drilling

Received
Office of Oil & Gas

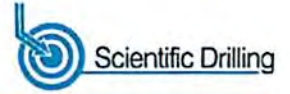
SEP 14 2015

10/16/2015

85-10041



EOW Completion Report



Company:	Antero Resources	Local Co-ordinate Reference:	Well Blanche Unit 3H
Project:	Ritchie County WV	TVD Reference:	Blanche 3H 968' GL + 24' KB @ 992.0usft
Site:	Anna Pad	MD Reference:	Blanche 3H 968' GL + 24' KB @ 992.0usft
Well:	Blanche Unit 3H	North Reference:	Grid
Wellbore:	Original Wellpath	Survey Calculation Method:	Minimum Curvature
Design:	As Drilled	Database:	Oklahoma District

Project	Ritchie County WV, Ritchie County WV, WV North		
Map System:	Universal Transverse Mercator (US Survey Fee	System Datum:	Mean Sea Level
Geo Datum:	NAD 1927 (NADCON CONUS)		
Map Zone:	Zone 17N (84 W to 78 W)		

Site	Anna Pad				
Site Position:		Northing:	14,283,550.70 usft	Latitude:	39° 20' 2.355 N
From:	Map	Easting:	1,662,998.99 usft	Longitude:	80° 55' 12.490 W
Position Uncertainty:	2.0 usft	Slot Radius:	13-3/16"	Grid Convergence:	0.05 °

Well	Blanche Unit 3H, Marcellus					
Well Position	+N/-S	0.0 usft	Northing:	14,283,579.14 usft	Latitude:	39° 20' 2.636 N
	+E/-W	0.0 usft	Easting:	1,663,025.51 usft	Longitude:	80° 55' 12.152 W
Position Uncertainty		2.0 usft	Wellhead Elevation:	992.0 usft	Ground Level:	968.0 usft

Wellbore	Original Wellpath				
Magnetics	Model Name	Sample Date	Declination (°)	Dip Angle (°)	Field Strength (nT)
	IGRF2010	4/9/2013	-8.34	66.98	52,479

Design	As Drilled				
Audit Notes:					
Version:	1.0	Phase:	ACTUAL	Tie On Depth:	0.0
Vertical Section:	Depth From (TVD) (usft)	+N/-S (usft)	+E/-W (usft)	Direction (°)	
	0.0	0.0	0.0	321.79	

Survey Program	Date 10/13/2014				
From (usft)	To (usft)	Survey (Wellbore)	Tool Name	Description	
113.0	5,130.4	Survey #6 Def Gyro to KOP (Original Well	SDI Standard Keeper	Scientific Drilling Intl. Standard Wireline Keeper	
5,235.0	14,470.0	Survey #7 MWD (Original Wellpath)	SDI MWD	Scientific Drilling Intl. MWD - Standard ver 1.0.1	

Survey									
MD (usft)	Inc (°)	Azi (azimuth) (°)	TVD (usft)	N/S (usft)	E/W (usft)	V. Sec (usft)	DLeg (°/100usft)		
0.0	0.00	0.00	0.0	0.0	0.0	0.0	0.00		
113.0	1.01	208.18	113.0	-0.9	-0.5	-0.4	0.89		
213.0	1.34	218.95	213.0	-2.6	-1.6	-1.0	0.40		
313.0	0.49	250.43	313.0	-3.6	-2.8	-1.1	0.96		
413.0	0.32	190.01	413.0	-4.0	-3.2	-1.2	0.43		
513.0	0.31	172.23	513.0	-4.6	-3.2	-1.6	0.10		
613.0	0.36	176.77	613.0	-5.2	-3.2	-2.1	0.06		
713.0	0.35	180.96	713.0	-5.8	-3.2	-2.6	0.03		
813.0	0.35	179.02	813.0	-6.4	-3.2	-3.1	0.01		
913.0	0.33	184.45	912.9	-7.0	-3.2	-3.5	0.04		
1,013.0	0.34	187.86	1,012.9	-7.6	-3.2	-3.9	0.02		

Received
Office of Oil & Gas
SEP 14 2015



85-10041

EOW Completion Report



Company:	Antero Resources	Local Co-ordinate Reference:	Well Blanche Unit 3H
Project:	Ritchie County WV	TVD Reference:	Blanche 3H 968' GL + 24' KB @ 992.0usft
Site:	Anna Pad	MD Reference:	Blanche 3H 968' GL + 24' KB @ 992.0usft
Well:	Blanche Unit 3H	North Reference:	Grid
Wellbore:	Original Wellpath	Survey Calculation Method:	Minimum Curvature
Design:	As Drilled	Database:	Oklahoma District

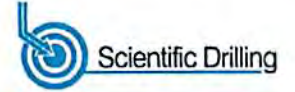
Survey									
MD (usft)	Inc (°)	Azi (azimuth) (°)	TVD (usft)	N/S (usft)	E/W (usft)	V. Sec (usft)	DLeg (°/100usft)		
1,113.0	0.39	196.73	1,112.9	-8.2	-3.4	-4.3	0.08		
1,213.0	0.35	191.03	1,212.9	-8.8	-3.5	-4.7	0.05		
1,313.0	0.33	182.56	1,312.9	-9.4	-3.6	-5.2	0.05		
1,413.0	0.35	182.42	1,412.9	-10.0	-3.6	-5.6	0.02		
1,513.0	0.36	189.39	1,512.9	-10.6	-3.7	-6.0	0.04		
1,613.0	0.30	184.18	1,612.9	-11.2	-3.8	-6.5	0.07		
1,713.0	0.21	156.26	1,712.9	-11.6	-3.7	-6.8	0.15		
1,813.0	0.21	143.04	1,812.9	-11.9	-3.5	-7.2	0.05		
1,913.0	0.17	147.54	1,912.9	-12.2	-3.3	-7.5	0.04		
2,013.0	0.21	160.64	2,012.9	-12.5	-3.2	-7.8	0.06		
2,113.0	0.20	159.67	2,112.9	-12.8	-3.1	-8.2	0.01		
2,213.0	0.25	141.73	2,212.9	-13.2	-2.9	-8.6	0.09		
2,313.0	0.18	158.05	2,312.9	-13.5	-2.7	-8.9	0.09		
2,413.0	0.11	158.08	2,412.9	-13.7	-2.6	-9.2	0.07		
2,513.0	0.07	168.58	2,512.9	-13.9	-2.5	-9.3	0.04		
2,613.0	0.06	159.47	2,612.9	-14.0	-2.5	-9.4	0.01		
2,713.0	3.45	37.65	2,712.9	-11.6	-0.7	-8.7	3.48		
2,813.0	8.25	36.10	2,812.3	-3.5	5.4	-6.1	4.80		
2,913.0	12.11	42.33	2,910.7	10.1	16.7	-2.4	4.01		
3,013.0	15.87	51.78	3,007.8	26.3	34.5	-0.7	4.39		
3,113.0	19.42	56.20	3,103.0	44.0	59.1	-1.9	3.79		
3,213.0	20.62	58.17	3,197.0	62.6	87.9	-5.2	1.38		
3,313.0	23.92	60.22	3,289.5	81.9	120.4	-10.1	3.39		
3,413.0	25.91	59.52	3,380.2	103.1	156.9	-16.0	2.01		
3,513.0	27.30	53.60	3,469.6	127.8	194.2	-19.7	2.99		
3,613.0	29.31	50.03	3,557.7	157.1	231.4	-19.7	2.63		
3,713.0	32.28	48.13	3,643.6	190.7	270.0	-17.2	3.12		
3,813.0	32.88	52.56	3,727.9	225.0	311.5	-15.9	2.46		
3,913.0	32.43	55.86	3,812.1	256.6	355.2	-18.1	1.84		
4,013.0	33.80	57.97	3,895.8	286.4	401.0	-23.0	1.79		
4,113.0	36.74	60.28	3,977.5	316.0	450.6	-30.4	3.23		
4,213.0	36.79	60.71	4,057.6	345.4	502.7	-39.5	0.26		
4,313.0	35.24	56.94	4,138.5	375.8	553.0	-46.7	2.70		
4,413.0	35.06	53.57	4,220.2	408.6	600.3	-50.2	1.95		
4,513.0	34.78	48.52	4,302.2	444.6	644.7	-49.5	2.90		
4,613.0	35.37	46.28	4,384.1	483.5	687.0	-45.1	1.42		
4,713.0	35.03	45.06	4,465.8	523.7	728.3	-38.9	0.78		
4,813.0	36.11	43.56	4,547.1	565.4	768.9	-31.3	1.39		
4,913.0	35.56	41.24	4,628.2	608.6	808.4	-21.8	1.47		
5,013.0	35.56	38.33	4,709.6	653.3	845.6	-19.7	1.69		
5,113.0	34.65	41.90	4,791.4	697.3	882.6	-19.7	2.25		
5,180.4	34.60	40.37	4,846.9	726.1	907.8	-12.9	1.29		
5,235.0	35.35	37.24	4,891.6	750.5	927.4	-16.1	3.56		
5,328.0	37.99	36.18	4,966.2	795.0	960.6	-30.5	2.92		

Received
Office of Oil & Gas
SEP 14 2015



85-10041

EOW Completion Report



Company: Antero Resources	Local Co-ordinate Reference: Well Blanche Unit 3H
Project: Ritchie County WV	TVD Reference: Blanche 3H 968' GL + 24' KB @ 992.0usft
Site: Anna Pad	MD Reference: Blanche 3H 968' GL + 24' KB @ 992.0usft
Well: Blanche Unit 3H	North Reference: Grid
Wellbore: Original Wellpath	Survey Calculation Method: Minimum Curvature
Design: As Drilled	Database: Oklahoma District

Survey								
MD (usft)	Inc (°)	Azi (azimuth) (°)	TVD (usft)	N/S (usft)	E/W (usft)	V. Sec (usft)	DLeg (°/100usft)	
5,422.0	37.11	40.14	5,040.7	840.0	995.9	44.0	2.73	
5,518.0	35.70	44.88	5,118.0	882.0	1,034.4	53.3	3.28	
5,613.0	34.82	49.89	5,195.6	919.2	1,074.7	57.5	3.18	
5,708.0	33.85	53.67	5,274.0	952.3	1,116.8	57.5	2.47	
5,804.0	34.38	52.79	5,353.5	984.6	1,159.9	56.2	0.75	
5,900.0	33.24	52.09	5,433.3	1,017.1	1,202.2	55.6	1.25	
5,996.0	33.94	52.62	5,513.3	1,049.5	1,244.3	55.0	0.79	
6,092.0	36.05	52.18	5,591.9	1,083.1	1,287.9	54.5	2.21	
6,188.0	40.01	51.04	5,667.5	1,119.9	1,334.2	54.7	4.19	
6,282.0	40.80	51.56	5,739.1	1,158.0	1,381.8	55.2	0.91	
6,377.0	40.27	52.62	5,811.3	1,195.9	1,430.5	54.9	0.91	
6,471.0	38.53	52.92	5,883.9	1,232.0	1,478.0	53.8	1.86	
6,503.0	38.51	52.88	5,909.0	1,244.0	1,493.9	53.5	0.10	
6,534.0	39.83	50.16	5,933.0	1,256.2	1,509.2	53.6	6.99	
6,567.0	40.98	44.53	5,958.1	1,270.7	1,524.9	55.2	11.59	
6,597.0	42.56	37.94	5,980.5	1,285.7	1,538.1	58.9	15.55	
6,629.0	44.23	31.61	6,003.8	1,303.8	1,550.6	65.3	14.55	
6,661.0	45.37	26.51	6,026.5	1,323.5	1,561.5	74.1	11.78	
6,676.0	45.84	24.14	6,037.0	1,333.2	1,566.1	78.8	11.72	
SCMR								
6,693.0	46.43	21.50	6,048.8	1,344.5	1,570.8	84.8	11.72	
6,725.0	47.31	16.67	6,070.6	1,366.5	1,578.5	97.4	11.35	
6,757.0	48.11	12.19	6,092.2	1,389.4	1,584.4	111.8	10.65	
6,788.0	49.11	7.99	6,112.7	1,412.3	1,588.4	127.2	10.66	
6,819.0	49.95	3.66	6,132.8	1,435.8	1,590.8	144.2	10.96	
6,839.0	50.53	0.85	6,145.6	1,451.1	1,591.4	155.9	11.20	
MDLX								
6,851.0	50.91	359.18	6,153.2	1,460.4	1,591.4	163.2	11.20	
6,883.0	51.53	354.79	6,173.2	1,485.3	1,590.1	183.5	10.87	
6,914.0	51.56	350.50	6,192.5	1,509.4	1,587.0	204.4	10.84	
6,945.0	51.27	346.26	6,211.9	1,533.1	1,582.1	226.0	10.73	
6,977.0	52.49	342.27	6,231.6	1,557.3	1,575.3	249.3	10.52	
7,006.0	56.00	340.22	6,248.6	1,579.6	1,567.7	271.5	13.40	
BRKT								
7,009.0	56.37	340.02	6,250.2	1,582.0	1,566.9	273.8	13.40	
7,041.0	60.67	338.26	6,267.0	1,607.5	1,557.1	299.9	14.23	
7,072.0	65.25	336.33	6,281.0	1,632.9	1,546.5	328.3	15.78	
7,074.0	65.49	336.19	6,281.9	1,634.6	1,545.7	328.3	13.65	
TLLY								
7,104.0	69.12	334.13	6,293.4	1,659.7	1,534.1	355.24	13.65	
7,136.0	72.28	332.73	6,304.0	1,686.7	1,520.6	384.8	10.70	
7,147.0	73.43	332.07	6,307.3	1,696.0	1,515.7	395.1	11.95	
MACL_HOT								
7,167.0	75.53	330.88	6,312.6	1,712.9	1,506.5	414.1	11.95	
7,199.0	78.35	328.24	6,319.8	1,739.8	1,490.7	445.0	11.93	

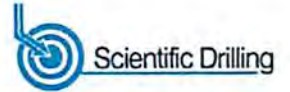
Received
Office of Oil & Gas

SEP 24 2015



85-10041

EOW Completion Report



Company: Antero Resources	Local Co-ordinate Reference: Well Blanche Unit 3H
Project: Ritchie County WV	TVD Reference: Blanche 3H 968' GL + 24' KB @ 992.0usft
Site: Anna Pad	MD Reference: Blanche 3H 968' GL + 24' KB @ 992.0usft
Well: Blanche Unit 3H	North Reference: Grid
Wellbore: Original Wellpath	Survey Calculation Method: Minimum Curvature
Design: As Drilled	Database: Oklahoma District

Survey							
MD (usft)	Inc (°)	Azi (azimuth) (°)	TVD (usft)	N/S (usft)	E/W (usft)	V. Sec (usft)	DLeg (°/100usft)
7,231.0	80.64	326.22	6,325.7	1,766.3	1,473.7	476.3	9.47
7,263.0	82.48	324.82	6,330.4	1,792.3	1,455.8	507.9	7.20
7,284.0	84.15	324.55	6,332.8	1,809.4	1,443.7	528.7	8.05
7,318.0	87.32	324.20	6,335.4	1,836.9	1,424.0	562.6	9.38
7,414.0	91.01	323.32	6,336.8	1,914.3	1,367.2	658.5	3.95
7,509.0	90.57	322.35	6,335.4	1,990.0	1,309.9	753.4	1.12
7,605.0	92.59	322.97	6,332.8	2,066.3	1,251.7	849.4	2.20
7,701.0	91.19	322.79	6,329.6	2,142.8	1,193.8	945.3	1.47
7,795.0	91.01	322.71	6,327.8	2,217.6	1,136.9	1,039.3	0.21
7,891.0	89.16	322.97	6,327.7	2,294.1	1,078.9	1,135.3	1.95
7,987.0	89.25	322.09	6,329.0	2,370.3	1,020.5	1,231.3	0.92
8,083.0	89.78	321.65	6,329.8	2,445.8	961.2	1,327.3	0.72
8,179.0	89.34	321.48	6,330.6	2,521.0	901.5	1,423.2	0.49
8,274.0	91.54	322.53	6,329.8	2,595.9	843.1	1,518.2	2.57
8,370.0	90.75	321.48	6,327.9	2,671.5	784.0	1,614.2	1.37
8,464.0	90.04	321.39	6,327.3	2,745.0	725.4	1,708.2	0.76
8,559.0	90.47	321.03	6,326.8	2,819.1	665.9	1,803.2	0.59
8,654.0	91.36	321.21	6,325.3	2,893.0	606.2	1,898.2	0.96
8,746.0	89.96	321.74	6,324.3	2,965.0	549.0	1,990.2	1.63
8,836.0	90.13	321.56	6,324.2	3,035.6	493.1	2,080.2	0.28
8,926.0	91.28	320.51	6,323.1	3,105.5	436.5	2,170.2	1.73
9,018.0	91.71	320.95	6,320.7	3,176.7	378.3	2,262.1	0.67
9,108.0	89.87	320.07	6,319.4	3,246.2	321.1	2,352.1	2.27
9,199.0	90.48	320.51	6,319.2	3,316.2	262.9	2,443.0	0.83
9,289.0	90.57	320.77	6,318.3	3,385.8	205.9	2,533.0	0.31
9,380.0	91.45	323.06	6,316.7	3,457.4	149.7	2,624.0	2.70
9,470.0	89.96	321.48	6,315.6	3,528.5	94.7	2,714.0	2.41
9,561.0	89.52	321.21	6,316.0	3,599.6	37.8	2,805.0	0.57
9,651.0	89.25	321.48	6,317.0	3,669.9	-18.4	2,895.0	0.42
9,741.0	89.78	324.46	6,317.8	3,741.7	-72.6	2,984.9	3.36
9,835.0	90.22	325.17	6,317.8	3,818.5	-126.7	3,078.8	0.89
9,930.0	89.96	321.12	6,317.6	3,894.5	-183.7	3,173.8	4.27
10,024.0	90.22	320.42	6,317.5	3,967.4	-243.1	3,267.7	0.79
10,118.0	90.04	321.74	6,317.3	4,040.5	-302.2	3,361.7	1.42
10,212.0	91.54	322.79	6,316.0	4,114.8	-359.7	3,455.7	1.95
10,306.0	89.96	322.44	6,314.7	4,189.5	-416.8	3,549.7	1.72
10,400.0	90.22	321.83	6,314.6	4,263.7	-474.5	3,643.7	0.71
10,494.0	90.13	322.00	6,314.3	4,337.7	-532.5	3,737.7	0.20
10,589.0	90.31	320.86	6,313.9	4,412.0	-591.7	3,832.7	1.21
10,682.0	90.48	320.07	6,313.3	4,483.7	-650.9	3,925.7	0.87
10,776.0	90.22	321.21	6,312.7	4,556.4	-710.5	4,019.6	1.24
10,871.0	90.22	322.00	6,312.4	4,630.8	-769.5	4,114.6	0.83
10,966.0	90.92	321.39	6,311.4	4,705.4	-828.4	4,209.6	0.98
11,060.0	90.57	322.27	6,310.2	4,779.3	-886.5	4,303.6	1.01
11,155.0	89.16	321.39	6,310.4	4,853.9	-945.2	4,398.6	1.75

Received
Office of Oil & Gas
SEP 14 2015

85-10041



EOW Completion Report



Company:	Antero Resources	Local Co-ordinate Reference:	Well Blanche Unit 3H
Project:	Ritchie County WV	TVD Reference:	Blanche 3H 968' GL + 24' KB @ 992.0usft
Site:	Anna Pad	MD Reference:	Blanche 3H 968' GL + 24' KB @ 992.0usft
Well:	Blanche Unit 3H	North Reference:	Grid
Wellbore:	Original Wellpath	Survey Calculation Method:	Minimum Curvature
Design:	As Drilled	Database:	Oklahoma District

Survey

MD (usft)	Inc (°)	Azi (azimuth) (°)	TVD (usft)	N/S (usft)	E/W (usft)	V. Sec (usft)	DLeg (°/100usft)
11,249.0	90.75	321.48	6,310.5	4,927.4	-1,003.8	4,492.6	1.69
11,344.0	90.66	322.18	6,309.3	5,002.1	-1,062.5	4,587.6	0.74
11,438.0	89.60	322.44	6,309.1	5,076.5	-1,120.0	4,681.6	1.16
11,531.0	90.75	321.48	6,308.8	5,149.7	-1,177.3	4,774.6	1.61
11,626.0	90.75	321.56	6,307.6	5,224.1	-1,236.4	4,869.6	0.08
11,720.0	89.60	319.63	6,307.3	5,296.7	-1,296.0	4,963.6	2.39
11,778.0	90.50	320.26	6,307.2	5,341.1	-1,333.4	5,021.5	1.89
11,814.0	91.01	319.98	6,306.8	5,368.8	-1,356.4	5,057.5	1.62
11,908.0	91.54	321.65	6,304.7	5,441.6	-1,415.8	5,151.5	1.86
12,002.0	91.01	322.97	6,302.6	5,516.0	-1,473.3	5,245.4	1.51
12,097.0	90.48	322.44	6,301.3	5,591.5	-1,530.8	5,340.4	0.79
12,190.0	90.75	321.92	6,300.4	5,665.0	-1,587.8	5,433.4	0.63
12,284.0	90.13	321.21	6,299.6	5,738.6	-1,646.3	5,527.4	1.00
12,379.0	89.87	321.56	6,299.6	5,812.8	-1,705.6	5,622.4	0.46
12,474.0	89.34	323.50	6,300.3	5,888.2	-1,763.4	5,717.4	2.12
12,567.0	90.48	322.88	6,300.4	5,962.7	-1,819.1	5,810.4	1.40
12,662.0	89.96	321.74	6,300.1	6,037.9	-1,877.2	5,905.4	1.32
12,757.0	90.04	321.56	6,300.1	6,112.4	-1,936.1	6,000.4	0.21
12,851.0	90.04	322.79	6,300.0	6,186.6	-1,993.7	6,094.3	1.31
12,945.0	90.13	324.90	6,299.9	6,262.5	-2,049.2	6,188.3	2.25
13,039.0	90.04	322.27	6,299.7	6,338.1	-2,105.0	6,282.2	2.80
13,134.0	89.87	320.86	6,299.8	6,412.6	-2,164.0	6,377.2	1.49
13,228.0	89.43	321.04	6,300.4	6,485.6	-2,223.3	6,471.2	0.51
13,323.0	89.43	319.89	6,301.3	6,558.8	-2,283.7	6,566.2	1.21
13,417.0	88.90	319.81	6,302.7	6,630.7	-2,344.3	6,660.1	0.57
13,511.0	89.52	320.25	6,304.0	6,702.7	-2,404.7	6,754.1	0.81
13,606.0	89.60	322.18	6,304.7	6,776.7	-2,464.2	6,849.1	2.03
13,700.0	90.57	322.71	6,304.6	6,851.3	-2,521.5	6,943.0	1.18
13,794.0	91.01	321.21	6,303.3	6,925.3	-2,579.4	7,037.0	1.66
13,888.0	90.22	323.41	6,302.3	6,999.7	-2,636.9	7,131.0	2.49
13,982.0	89.96	323.15	6,302.1	7,075.0	-2,693.1	7,225.0	0.39
14,076.0	89.60	323.15	6,302.5	7,150.2	-2,749.5	7,319.0	0.38
14,171.0	90.04	322.35	6,302.8	7,225.8	-2,807.0	7,413.9	0.96
14,266.0	90.04	322.62	6,302.7	7,301.2	-2,864.8	7,508.9	0.28
14,360.0	90.40	322.71	6,302.4	7,375.9	-2,921.8	7,602.9	0.39
14,412.0	90.57	321.74	6,301.9	7,417.0	-2,953.7	7,654.9	1.89
14,470.0	90.57	321.74	6,301.3	7,462.6	-2,989.6	7,712.9	0.00

Received
Office of Oil & Gas

SEP 14 2015

85-10041



EOW Completion Report



Company:	Antero Resources	Local Co-ordinate Reference:	Well Blanche Unit 3H
Project:	Ritchie County WV	TVD Reference:	Blanche 3H 968' GL + 24' KB @ 992.0usft
Site:	Anna Pad	MD Reference:	Blanche 3H 968' GL + 24' KB @ 992.0usft
Well:	Blanche Unit 3H	North Reference:	Grid
Wellbore:	Original Wellpath	Survey Calculation Method:	Minimum Curvature
Design:	As Drilled	Database:	Oklahoma District

Design Annotations				
Measured Depth (usft)	Vertical Depth (usft)	Local Coordinates		Comment
		+N/-S (usft)	+E/-W (usft)	
6,676.0	6,037.0	1,333.2	1,566.1	SCMR
6,839.0	6,145.6	1,451.1	1,591.4	MDLX
7,006.0	6,248.6	1,579.6	1,567.7	BRKT
7,074.0	6,281.9	1,634.6	1,545.7	TLLY
7,147.0	6,307.3	1,696.0	1,515.7	MACL_HOT

Checked By: _____ Approved By: _____ Date: _____

Received
Office of Oil & Gas
SEP 14 2015