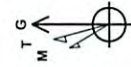




McCabe Unit 3H
Ritchie County WV
Northing: 14233113.76
Easting: 1673117.74
As Drilled



Azimuths to Grid North
 True North: -0.07°
 Magnetic North: -8.44°
 Magnetic Field
 Strength: 52306 Bsnt
 Dip Angle: 66.79°
 Date: 1/20/2014
 Model: IGRF2010

To convert Magnetic North to Grid, Subtract 8.44°
 To convert True North to Grid, Subtract 0.07°

McCabe Unit 3H 1142' GL + 28' RKB @ 1170.0usft
 Gr: 1142.0

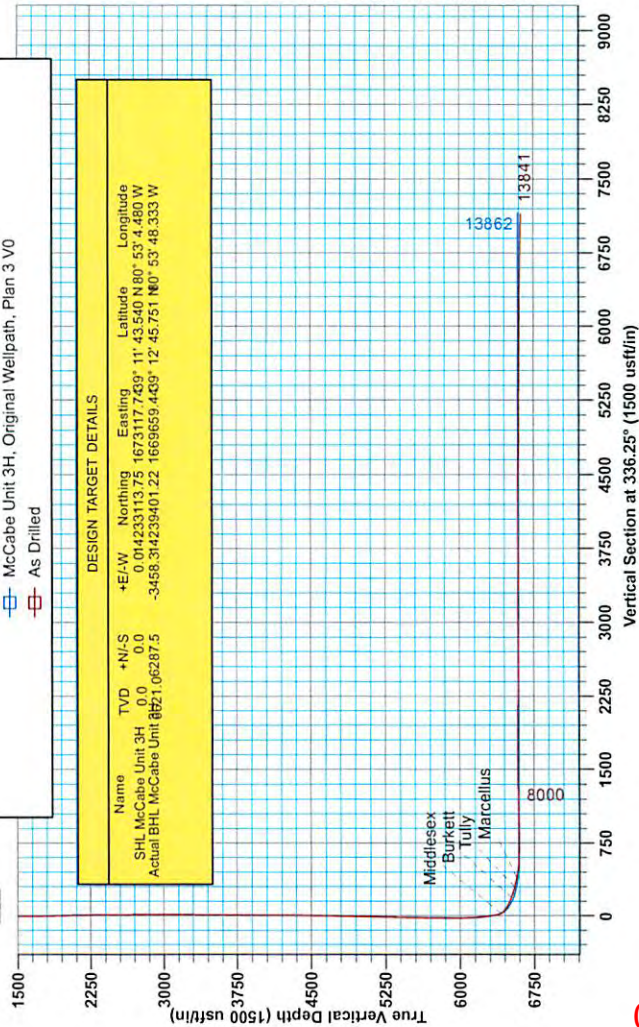
WELL DETAILS		McCabe Unit 3H	
+N/-S	+E/-W	Ground Level:	1142.0
0.0	0.0	Easting	1673117.74
		Latitude	39° 11' 43.540 N
		Longitude	80° 53' 4.481 W

LEGEND

- +— Nicholson Unit 2H, Original Wellpath, As Drilled V0
- +— Allstate Unit 2H, Original Wellpath, As Drilled V0
- +— Nicholson Unit 1H, Original Wellpath, As Drilled V0
- +— O'Neil Unit 2H, Original Wellpath, As Drilled V0
- +— O'Neil Unit 1H, Original Wellpath, As Drilled V0
- +— McCabe Unit 3H, Original Wellpath, Plan 3 V0
- +— As Drilled

DESIGN TARGET DETAILS

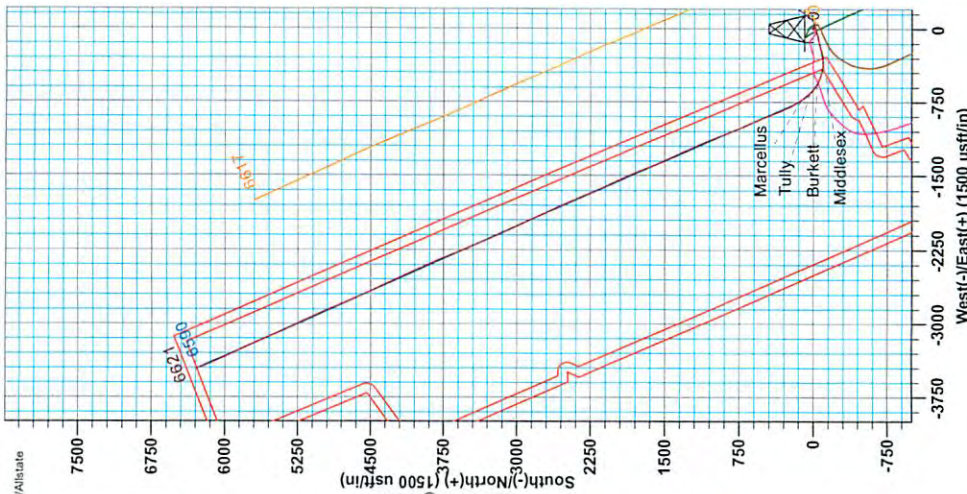
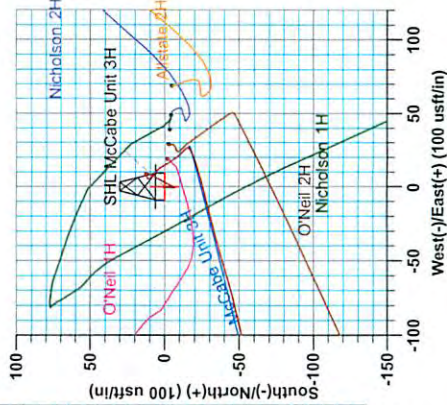
Name	TVD	+N/-S	Easting	Latitude	Longitude
SHL McCabe Unit 3H	0.0	0.0	1673117.7439	39° 11' 43.540 N	80° 53' 4.480 W
Actual BHL McCabe Unit 3H	1062.875	-3458.3	1669659.4439	39° 12' 45.751 N	80° 53' 48.333 W



SITE DETAILS: Yolanda Pad / Nicholson/O'Neil/McCabe/Allstate
 Site Center: Nicholson Unit 2H
 Site Centre Northing: 14233110.41
 Easting: 1673156.78
 Positional Uncertainty: 2.0
 Convergence: 0.07
 Local North: Grid

Genie Lightfoot
 15-56, March 05 2014
 Scientific Drilling
 421 South Eagle Lane
 Oklahoma City, OK 73128

PROJECT DETAIL: Ritchie County WV
 Geodetic System: Universal Transverse Mercator (US Survey Feet)
 Datum: NAD 1927 (NADCON CONUS)
 Ellipsoid: Clarke 1866
 Zone: Zone 17N (84 W to 78 W)
 System Datum: Mean Sea Level



06/05/2015

Received
 Office of Oil & Gas
 MAY 18 2015



Antero Resources

Ritchie County WV
Yolanda Pad / Nicholson/O'Neil/McCabe/Allstate
McCabe Unit 3H
Original Wellpath

Design: As Drilled

EOW Completion Report

05 March, 2014

Received
Office of Oil & Gas
MAY 18 2015



06/05/2015



Company:	Antero Resources	Local Co-ordinate Reference:	Well McCabe Unit 3H
Project:	Ritchie County WV	TVD Reference:	McCabe Unit 3H 1142' GL + 28' RKB @ 1170.0us
Site:	Yolanda Pad / Nicholson/O'Neil/McCabe/Allstate	MD Reference:	McCabe Unit 3H 1142' GL + 28' RKB @ 1170.0us
Well:	McCabe Unit 3H	North Reference:	Grid
Wellbore:	Original Wellpath	Survey Calculation Method:	Minimum Curvature
Design:	As Drilled	Database:	Oklahoma District

Project	Ritchie County WV, Ritchie County WV, WV North		
Map System:	Universal Transverse Mercator (US Survey Fee	System Datum:	Mean Sea Level
Geo Datum:	NAD 1927 (NADCON CONUS)		
Map Zone:	Zone 17N (84 W to 78 W)		

Site	Yolanda Pad / Nicholson/O'Neil/McCabe/Allstate				
Site Position:		Northing:	14,233,110.41 usft	Latitude:	39° 11' 43.507 N
From:	Map	Easting:	1,673,156.78 usft	Longitude:	80° 53' 3.984 W
Position Uncertainty:	2.0 usft	Slot Radius:	13-3/16"	Grid Convergence:	0.07 °

Well	McCabe Unit 3H, Marcellus					
Well Position	+N/-S	0.0 usft	Northing:	14,233,113.76 usft	Latitude:	39° 11' 43.540 N
	+E/-W	0.0 usft	Easting:	1,673,117.74 usft	Longitude:	80° 53' 4.481 W
Position Uncertainty		2.0 usft	Wellhead Elevation:	1,170.0 usft	Ground Level:	1,142.0 usft

Wellbore	Original Wellpath
-----------------	-------------------

Magnetics	Model Name	Sample Date	Declination (°)	Dip Angle (°)	Field Strength (nT)
	IGRF2010	1/20/2014	-8.37	66.79	52,307

Design	As Drilled
---------------	------------

Audit Notes:					
Version:	1.0	Phase:	ACTUAL	Tie On Depth:	0.0
Vertical Section:	Depth From (TVD) (usft)	+N/-S (usft)	+E/-W (usft)	Direction (°)	
	0.0	0.0	0.0	336.25	

Survey Program	Date	3/5/2014		
From (usft)	To (usft)	Survey (Wellbore)	Tool Name	Description
100.0	1,710.0	Survey #2 Gyro (Original Wellpath)	SDI Standard Keeper	Scientific Drilling Intl. Standard Wireline Keeper
1,810.0	5,833.0	Survey #4 Gyro to 5833 (Original Wellpath)	SDI Standard Keeper	Scientific Drilling Intl. Standard Wireline Keeper
5,887.0	13,841.0	Survey #5 MWD (Original Wellpath)	SDI MWD	Scientific Drilling Intl. MWD - Standard ver 1.0.1

MD (usft)	Inc (°)	Azi (azimuth) (°)	TVD (usft)	N/S (usft)	E/W (usft)	V. Sec (usft)	DLeg (°/100usft)
0.0	0.00	0.00	0.0	0.0	0.0	0.0	0.00
100.0	0.67	196.35	100.0	-0.6	-0.2	-0.4	0.67
200.0	0.46	183.96	200.0	-1.5	-0.4	-1.2	0.24
300.0	0.32	175.72	300.0	-2.2	-0.4	-1.9	0.15
400.0	0.32	195.49	400.0	-2.7	-0.4	-2.3	0.11
500.0	0.25	179.48	500.0	-3.2	-0.5	-2.8	0.11
600.0	0.22	181.73	600.0	-3.6	-0.5	-3.1	0.03
700.0	0.18	180.44	700.0	-4.0	-0.5	-3.5	0.04
800.0	0.08	158.98	800.0	-4.2	-0.5	-3.7	0.11
900.0	0.18	193.63	900.0	-4.4	-0.5	-3.9	0.12



Company:	Antero Resources	Local Co-ordinate Reference:	Well McCabe Unit 3H
Project:	Ritchie County WV	TVD Reference:	McCabe Unit 3H 1142' GL + 28' RKB @ 1170.0us
Site:	Yolanda Pad / Nicholson/O'Neil/McCabe/Allstate	MD Reference:	McCabe Unit 3H 1142' GL + 28' RKB @ 1170.0us
Well:	McCabe Unit 3H	North Reference:	Grid
Wellbore:	Original Wellpath	Survey Calculation Method:	Minimum Curvature
Design:	As Drilled	Database:	Oklahoma District

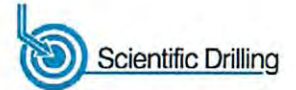
Survey

MD (usft)	Inc (°)	Azi (azimuth) (°)	TVD (usft)	N/S (usft)	E/W (usft)	V. Sec (usft)	DLeg (°/100usft)
1,000.0	0.14	190.83	1,000.0	-4.7	-0.5	-4.1	0.04
1,100.0	0.14	162.39	1,100.0	-4.9	-0.5	-4.3	0.07
1,200.0	0.28	188.48	1,200.0	-5.3	-0.5	-4.6	0.17
1,300.0	0.14	172.15	1,300.0	-5.7	-0.6	-5.0	0.15
1,400.0	0.36	186.33	1,400.0	-6.1	-0.6	-5.4	0.23
1,500.0	0.12	186.96	1,500.0	-6.5	-0.6	-5.7	0.24
1,600.0	0.21	169.66	1,600.0	-6.8	-0.6	-6.0	0.10
1,700.0	0.31	178.08	1,700.0	-7.2	-0.6	-6.4	0.11
1,710.0	0.32	167.20	1,710.0	-7.3	-0.5	-6.5	0.60
1,810.0	2.62	24.89	1,810.0	-5.5	0.5	-5.2	2.88
1,910.0	3.37	26.86	1,909.8	-0.8	2.8	-1.9	0.76
2,010.0	2.59	27.93	2,009.7	3.8	5.2	1.4	0.78
2,110.0	2.00	27.51	2,109.6	7.4	7.0	3.9	0.59
2,210.0	1.20	28.97	2,209.6	9.8	8.3	5.6	0.80
2,310.0	0.85	23.45	2,309.6	11.4	9.1	6.8	0.36
2,410.0	0.59	26.47	2,409.6	12.6	9.7	7.6	0.26
2,510.0	0.16	0.91	2,509.6	13.2	9.9	8.1	0.45
2,610.0	0.05	294.47	2,609.6	13.3	9.8	8.2	0.15
2,710.0	0.10	256.26	2,709.6	13.3	9.7	8.3	0.07
2,810.0	0.17	288.00	2,809.6	13.3	9.5	8.4	0.10
2,910.0	0.25	277.45	2,909.6	13.4	9.1	8.6	0.09
3,010.0	0.16	250.81	3,009.6	13.4	8.8	8.7	0.13
3,110.0	0.27	246.90	3,109.6	13.3	8.4	8.7	0.11
3,210.0	0.30	234.70	3,209.6	13.0	8.0	8.7	0.07
3,310.0	0.30	220.16	3,309.6	12.7	7.6	8.5	0.08
3,410.0	0.25	198.79	3,409.6	12.3	7.4	8.2	0.11
3,510.0	0.24	258.54	3,509.6	12.0	7.1	8.1	0.24
3,610.0	0.22	255.19	3,609.6	11.9	6.7	8.2	0.02
3,710.0	0.19	239.13	3,709.5	11.8	6.4	8.2	0.06
3,810.0	0.16	256.97	3,809.5	11.7	6.1	8.2	0.06
3,910.0	0.18	235.64	3,909.5	11.5	5.9	8.2	0.07
4,010.0	0.23	213.69	4,009.5	11.3	5.6	8.1	0.09
4,110.0	0.42	189.70	4,109.5	10.8	5.4	7.7	0.23
4,210.0	0.55	155.59	4,209.5	10.0	5.6	6.9	0.31
4,310.0	0.75	132.87	4,309.5	9.1	6.3	5.8	0.32
4,410.0	0.99	129.08	4,409.5	8.1	7.4	4.4	0.25
4,510.0	1.24	127.82	4,509.5	6.9	8.9	2.7	0.25
4,610.0	1.32	133.67	4,609.5	5.4	10.6	0.7	0.15
4,710.0	1.47	141.93	4,709.5	3.6	12.2	-1.6	0.25
4,810.0	1.56	146.77	4,809.4	1.5	13.8	-4.2	0.16
4,910.0	1.63	147.74	4,909.4	-0.9	15.3	-7.0	0.08
5,010.0	1.44	148.93	5,009.3	-3.2	16.7	-9.6	0.19
5,110.0	1.43	147.81	5,109.3	-5.3	18.0	-12.1	0.03
5,210.0	1.29	142.08	5,209.3	-7.2	19.4	-14.4	0.20
5,310.0	1.13	141.38	5,309.3	-8.9	20.7	-16.5	0.16

MAY 18 2015

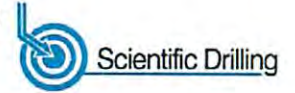


EOW Completion Report



Company:	Antero Resources	Local Co-ordinate Reference:	Well McCabe Unit 3H
Project:	Ritchie County WV	TVD Reference:	McCabe Unit 3H 1142' GL + 28' RKB @ 1170.0us
Site:	Yolanda Pad / Nicholson/O'Neil/McCabe/Allstate	MD Reference:	McCabe Unit 3H 1142' GL + 28' RKB @ 1170.0us
Well:	McCabe Unit 3H	North Reference:	Grid
Wellbore:	Original Wellpath	Survey Calculation Method:	Minimum Curvature
Design:	As Drilled	Database:	Oklahoma District

Survey								
MD (usft)	Inc (°)	Azi (azimuth) (°)	TVD (usft)	N/S (usft)	E/W (usft)	V. Sec (usft)	DLeg (°/100usft)	
5,410.0	0.94	134.07	5,409.2	-10.2	21.9	-18.2	0.23	
5,510.0	1.05	136.56	5,509.2	-11.5	23.1	-19.8	0.12	
5,610.0	1.01	137.64	5,609.2	-12.8	24.3	-21.5	0.04	
5,710.0	0.92	138.24	5,709.2	-14.0	25.4	-23.1	0.09	
5,810.0	0.67	142.13	5,809.2	-15.1	26.3	-24.4	0.26	
5,833.0	0.69	129.41	5,832.2	-15.3	26.5	-24.7	0.66	
5,887.0	0.53	188.57	5,886.2	-15.7	26.7	-25.2	1.14	
5,918.0	3.78	235.95	5,917.1	-16.5	25.9	-25.5	11.11	
5,950.0	6.95	241.84	5,949.0	-18.0	23.3	-25.8	10.04	
5,982.0	11.43	249.92	5,980.6	-20.0	18.6	-25.8	14.54	
6,014.0	13.45	253.88	6,011.8	-22.1	12.1	-25.1	6.85	
6,045.0	13.37	254.41	6,042.0	-24.0	5.1	-24.1	0.47	
6,076.0	15.04	255.37	6,072.0	-26.0	-2.2	-22.9	5.44	
6,108.0	18.64	255.72	6,102.6	-28.3	-11.2	-21.4	11.25	
6,140.0	21.90	255.72	6,132.7	-31.1	-21.9	-19.6	10.19	
6,172.0	24.36	255.46	6,162.1	-34.2	-34.1	-17.6	7.69	
6,203.0	26.73	254.49	6,190.1	-37.7	-47.0	-15.5	7.76	
6,235.0	29.72	253.79	6,218.2	-41.8	-61.6	-13.5	9.40	
6,267.0	33.24	255.64	6,245.5	-46.2	-77.7	-11.0	11.41	
6,298.0	36.84	258.01	6,270.9	-50.2	-95.0	-7.7	12.41	
6,330.0	40.54	258.54	6,295.9	-54.3	-114.6	-3.5	11.61	
6,362.0	44.58	257.57	6,319.4	-58.8	-135.8	0.9	12.79	
6,394.0	48.98	256.34	6,341.4	-64.1	-158.5	5.2	14.03	
6,426.0	53.55	255.46	6,361.4	-70.1	-182.7	9.4	14.44	
6,457.0	58.12	255.11	6,378.8	-76.7	-207.5	13.4	14.77	
6,489.0	62.43	254.76	6,394.6	-83.9	-234.3	17.6	13.50	
6,521.0	65.69	257.31	6,408.6	-90.8	-262.2	22.5	12.45	
6,524.0	65.77	257.79	6,409.9	-91.4	-264.9	23.0	14.86	
Middlesex								
6,553.0	66.65	262.40	6,421.6	-96.0	-291.0	29.4	14.86	
6,585.0	67.88	267.32	6,433.9	-98.6	-320.4	38.8	14.69	
6,616.0	70.00	271.72	6,445.1	-98.8	-349.3	50.2	14.91	
6,648.0	70.79	274.71	6,455.8	-97.1	-379.4	63.9	9.14	
6,679.0	71.49	277.87	6,465.9	-93.9	-408.6	78.6	9.91	
6,711.0	72.11	281.48	6,475.9	-88.8	-438.5	95.3	10.89	
6,743.0	72.55	284.46	6,485.6	-82.0	-468.2	113.6	8.98	
6,775.0	72.63	289.12	6,495.1	-73.2	-497.5	133.4	13.90	
6,807.0	73.07	293.60	6,504.6	-62.0	-525.9	155.0	13.45	
6,839.0	73.42	297.91	6,513.8	-48.7	-553.5	178.3	12.94	
6,856.0	73.41	300.51	6,518.7	-40.8	-567.7	191.3	14.69	
Burkett								
6,870.0	73.42	302.66	6,522.7	-33.7	-579.2	202.4	14.69	
6,901.0	73.60	307.67	6,531.5	-16.6	-603.5	227.8	15.51	
6,933.0	74.34	311.18	6,540.3	2.9	-627.2	255.3	10.79	



MAY 18 2015

Company:	Antero Resources	Local Co-ordinate Reference:	Well McCabe Unit 3H
Project:	Ritchie County WV	TVD Reference:	McCabe Unit 3H 1142' GL + 28' RKB @ 1170.0us
Site:	Yolanda Pad / Nicholson/O'Neil/McCabe/Allstate	MD Reference:	McCabe Unit 3H 1142' GL + 28' RKB @ 1170.0us
Well:	McCabe Unit 3H	North Reference:	Grid
Wellbore:	Original Wellpath	Survey Calculation Method:	Minimum Curvature
Design:	As Drilled	Database:	Oklahoma District

Survey

MD (usft)	Inc (°)	Azi (azimuth) (°)	TVD (usft)	N/S (usft)	E/W (usft)	V. Sec (usft)	DLeg (°/100usft)
6,964.0	76.00	313.52	6,548.2	23.1	-649.4	282.7	9.05
6,976.0	76.64	314.86	6,551.1	31.2	-657.7	293.5	12.08
Tully							
6,996.0	77.73	317.07	6,555.5	45.2	-671.3	311.8	12.08
7,028.0	79.14	319.44	6,561.9	68.6	-692.1	341.6	8.49
7,060.0	79.23	322.08	6,567.9	93.0	-712.0	371.9	8.11
7,083.0	79.68	325.02	6,572.2	111.2	-725.5	393.9	12.71
Marcellus							
7,091.0	79.84	326.04	6,573.6	117.7	-729.9	401.7	12.71
7,123.0	80.37	328.67	6,579.1	144.2	-746.9	432.8	8.26
7,155.0	82.04	329.82	6,584.0	171.4	-763.1	464.2	6.31
7,186.0	83.54	330.78	6,587.9	198.1	-778.3	494.8	5.73
7,215.0	85.47	331.66	6,590.6	223.4	-792.2	523.5	7.31
7,248.0	87.32	333.42	6,592.7	252.6	-807.4	556.4	7.73
7,311.0	87.41	336.85	6,595.6	309.7	-833.9	619.3	5.44
7,405.0	89.78	337.90	6,597.9	396.4	-870.0	713.2	2.76
7,500.0	90.13	336.93	6,598.0	484.1	-906.5	808.2	1.09
7,596.0	90.75	336.93	6,597.2	572.5	-944.1	904.2	0.65
7,686.0	91.36	336.76	6,595.6	655.2	-979.5	994.2	0.70
7,777.0	91.10	336.76	6,593.6	738.8	-1,015.4	1,085.2	0.29
7,867.0	90.84	337.02	6,592.1	821.6	-1,050.7	1,175.2	0.41
7,957.0	91.98	337.99	6,589.9	904.7	-1,085.1	1,265.1	1.66
8,047.0	89.52	336.93	6,588.7	987.8	-1,119.6	1,355.1	2.98
8,137.0	89.69	337.29	6,589.3	1,070.7	-1,154.6	1,445.1	0.44
8,238.0	90.48	336.93	6,589.2	1,163.8	-1,193.9	1,546.0	0.86
8,319.0	89.78	336.32	6,589.0	1,238.1	-1,226.1	1,627.0	1.15
8,410.0	89.34	334.65	6,589.7	1,320.9	-1,263.8	1,718.0	1.90
8,500.0	90.57	334.39	6,589.8	1,402.1	-1,302.5	1,808.0	1.40
8,591.0	89.87	335.09	6,589.4	1,484.4	-1,341.4	1,898.9	1.09
8,682.0	90.04	336.93	6,589.5	1,567.6	-1,378.4	1,989.9	2.03
8,776.0	89.87	337.55	6,589.6	1,654.3	-1,414.7	2,083.9	0.68
8,871.0	89.16	337.37	6,590.4	1,742.0	-1,451.1	2,178.9	0.77
8,966.0	88.99	337.29	6,591.9	1,829.6	-1,487.7	2,273.9	0.20
9,062.0	89.78	335.53	6,592.9	1,917.6	-1,526.2	2,369.9	2.01
9,157.0	90.40	335.62	6,592.8	2,004.1	-1,565.4	2,464.9	0.66
9,251.0	89.34	336.06	6,593.0	2,089.9	-1,603.9	2,558.9	1.22
9,345.0	90.04	335.88	6,593.5	2,175.7	-1,642.2	2,652.8	0.77
9,440.0	90.22	335.97	6,593.3	2,262.5	-1,680.9	2,747.8	0.21
9,536.0	91.10	336.23	6,592.2	2,350.2	-1,719.8	2,843.8	0.96
9,630.0	89.78	335.62	6,591.5	2,436.0	-1,758.2	2,937.8	1.55
9,725.0	89.78	336.06	6,591.8	2,522.7	-1,797.1	3,032.8	0.46
9,820.0	90.31	336.23	6,591.8	2,609.6	-1,835.5	3,127.8	0.59
9,915.0	89.16	335.79	6,592.2	2,696.4	-1,874.1	3,222.8	1.30
10,011.0	89.96	335.26	6,592.9	2,783.8	-1,913.9	3,318.8	1.00
10,105.0	89.34	333.59	6,593.5	2,868.5	-1,954.5	3,412.8	1.90



Company:	Antero Resources	Local Co-ordinate Reference:	Well McCabe Unit 3H
Project:	Ritchie County WV	TVD Reference:	McCabe Unit 3H 1142' GL + 28' RKB @ 1170.0us
Site:	Yolanda Pad / Nicholson/O'Neil/McCabe/Allstate	MD Reference:	McCabe Unit 3H 1142' GL + 28' RKB @ 1170.0us
Well:	McCabe Unit 3H	North Reference:	Grid
Wellbore:	Original Wellpath	Survey Calculation Method:	Minimum Curvature
Design:	As Drilled	Database:	Oklahoma District

Survey

MD (usft)	Inc (°)	Azi (azimuth) (°)	TVD (usft)	N/S (usft)	E/W (usft)	V. Sec (usft)	DLeg (°/100usft)
10,200.0	91.19	335.53	6,593.1	2,954.3	-1,995.3	3,507.7	2.82
10,296.0	89.34	336.06	6,592.6	3,041.9	-2,034.6	3,603.7	2.00
10,391.0	90.75	337.29	6,592.6	3,129.1	-2,072.2	3,698.7	1.97
10,486.0	91.10	337.02	6,591.0	3,216.6	-2,109.1	3,793.7	0.47
10,582.0	89.16	336.76	6,590.8	3,304.9	-2,146.8	3,889.7	2.04
10,676.0	89.52	337.20	6,591.9	3,391.4	-2,183.5	3,983.6	0.60
10,771.0	89.96	337.46	6,592.3	3,479.1	-2,220.2	4,078.6	0.54
10,866.0	90.57	337.55	6,591.9	3,566.9	-2,256.5	4,173.6	0.65
10,962.0	90.66	337.55	6,590.8	3,655.6	-2,293.2	4,269.6	0.09
11,057.0	89.16	337.64	6,591.0	3,743.4	-2,329.4	4,364.5	1.58
11,152.0	89.34	336.67	6,592.2	3,831.0	-2,366.2	4,459.5	1.04
11,247.0	88.29	335.26	6,594.2	3,917.7	-2,404.9	4,554.5	1.85
11,341.0	88.64	334.39	6,596.7	4,002.7	-2,444.9	4,648.4	1.00
11,434.0	89.25	334.82	6,598.4	4,086.7	-2,484.8	4,741.4	0.80
11,528.0	90.48	337.20	6,598.7	4,172.6	-2,523.0	4,835.4	2.85
11,623.0	89.43	335.35	6,598.7	4,259.6	-2,561.2	4,930.4	2.24
11,717.0	90.04	335.62	6,599.2	4,345.1	-2,600.2	5,024.4	0.71
11,811.0	89.08	335.44	6,599.9	4,430.7	-2,639.1	5,118.3	1.04
11,905.0	88.99	336.41	6,601.5	4,516.5	-2,677.5	5,212.3	1.04
12,000.0	89.52	335.00	6,602.7	4,603.0	-2,716.6	5,307.3	1.59
12,094.0	90.57	337.55	6,602.6	4,689.1	-2,754.4	5,401.3	2.93
12,188.0	89.69	337.81	6,602.4	4,776.0	-2,790.1	5,495.3	0.98
12,282.0	90.22	338.16	6,602.5	4,863.2	-2,825.3	5,589.2	0.68
12,377.0	89.25	335.88	6,602.9	4,950.6	-2,862.4	5,684.2	2.61
12,471.0	89.60	335.88	6,603.9	5,036.4	-2,900.8	5,778.2	0.37
12,565.0	90.04	335.79	6,604.2	5,122.2	-2,939.3	5,872.2	0.48
12,660.0	88.64	335.35	6,605.3	5,208.7	-2,978.6	5,967.2	1.54
12,754.0	88.90	335.44	6,607.3	5,294.1	-3,017.7	6,061.2	0.29
12,793.0	89.69	335.97	6,607.8	5,329.7	-3,033.8	6,100.1	2.44
12,943.0	89.16	335.44	6,609.3	5,466.4	-3,095.5	6,250.1	0.50
13,037.0	89.34	336.49	6,610.5	5,552.2	-3,133.8	6,344.1	1.13
13,132.0	89.78	336.76	6,611.2	5,639.4	-3,171.4	6,439.1	0.54
13,225.0	90.22	335.88	6,611.2	5,724.6	-3,208.8	6,532.1	1.06
13,319.0	88.55	334.65	6,612.2	5,810.0	-3,248.1	6,626.1	2.21
13,414.0	88.11	334.03	6,615.0	5,895.6	-3,289.2	6,721.0	0.80
13,508.0	88.72	335.35	6,617.6	5,980.5	-3,329.4	6,814.9	1.55
13,603.0	88.90	337.02	6,619.6	6,067.4	-3,367.8	6,909.9	1.77
13,698.0	89.52	337.20	6,620.9	6,154.9	-3,404.7	7,004.9	0.68
13,786.0	90.13	338.34	6,621.2	6,236.3	-3,438.0	7,092.8	1.47
13,841.0	90.13	338.34	6,621.0	6,287.5	-3,458.3	7,147.8	0.00

Company:	Antero Resources	Local Co-ordinate Reference:	Well McCabe Unit 3H
Project:	Ritchie County WV	TVD Reference:	McCabe Unit 3H 1142' GL + 28' RKB @ 1170.0us
Site:	Yolanda Pad / Nicholson/O'Neil/McCabe/Allstate	MD Reference:	McCabe Unit 3H 1142' GL + 28' RKB @ 1170.0us
Well:	McCabe Unit 3H	North Reference:	Grid
Wellbore:	Original Wellpath	Survey Calculation Method:	Minimum Curvature
Design:	As Drilled	Database:	Oklahoma District

Design Annotations

Measured Depth (usft)	Vertical Depth (usft)	Local Coordinates		Comment
		+N/-S (usft)	+E/-W (usft)	
6,524.0	6,409.9	-91.4	-264.9	Middlesex
6,856.0	6,518.7	-40.8	-567.7	Burkett
6,976.0	6,551.1	31.2	-657.7	Tully
7,083.0	6,572.2	111.2	-725.5	Marcellus

Checked By: _____ Approved By: _____ Date: _____

Received
Office of Oil & Gas
MAY 18 2015