



Antero Resources
 O'Neil Unit 1H
 Ritchie County WV
 Northing: 14233112.07
 Easting: 1673136.76
 Original Wellpath

WELL DETAILS: O'Neil Unit 1H

+N/S	0.0	+E/W	0.0	Northing	14233112.07	Easting	1673136.76	Longitude	80° 53' 4.239 W
Ground Level:		1142.0		Slot					

PROJECT DETAILS: Ritchie County WV

Geodetic System: Universal Transverse Mercator (US Survey Feet)
 Datum: NAD 1983 (NAD83 CONUS)
 Ellipsoid: Clarke 1866
 Zone: Zone 17N (84 W to 78 W)
 System Datum: Mean Sea Level

REFERENCE INFORMATION

Coordinates (N/E) Reference: USGS (NAD 83) 11° 54' 30" N
 Vertical (VD) Reference: O'Neil Unit 1H 25' 4.8" @ 1187' South
 Measured South Reference: O'Neil Unit 1H 25' 4.8" @ 1187' South
 Calculation Method: Minimum Curvature

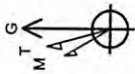
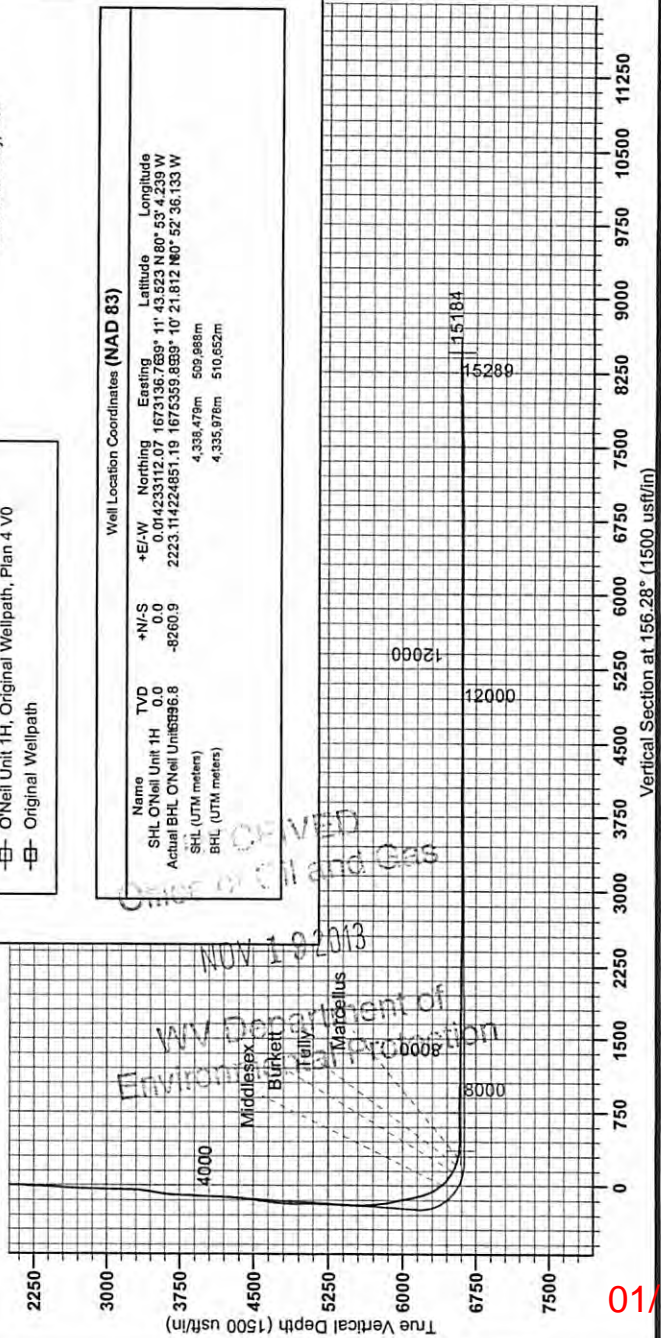
Genie Lightfoot
 14:33, July 18 2013
 Scientific Drilling
 421 South Eagle Lane
 Oklahoma City, OK

LEGEND

- Nicholson Unit 2H, Original Wellpath, Original Wellpath V0
- ◇— O'Neil Unit 2H, Original Wellpath, Original Wellpath V0
- O'Neil Unit 1H, Original Wellpath, Plan 4 V0
- Original Wellpath

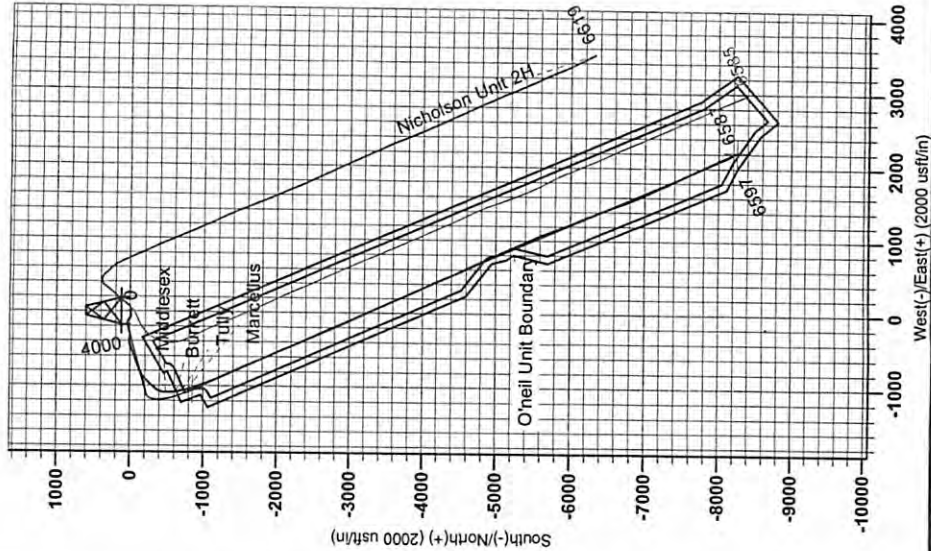
Well Location Coordinates (NAD 83)

Name	TVD	+N/S	+E/W	Northing	Easting	Latitude	Longitude
SHL O'Neil Unit 1H	0.0	0.0	0.0	14233112.07	1673136.76	11° 53' 52.3" N	80° 53' 4.239 W
Actual BHL O'Neil Unit 6936.8	-8260.9			2223.114224851.19	1675359.8959	10° 21' 81.2" N	80° 52' 36.133 W
SHL (UTM meters)				4,336.476m	509.698m		
BHL (UTM meters)				4,335.976m	510.652m		



To convert Magnetic North to Grid, Subtract 8.37°
 To convert True North to Grid, Subtract 0.07°

Magnetic Field
 Strength: 52493.2nT
 Dip Angle: 66.93°
 Inclination: 5.12°
 Model: IGRF2010



85.09964

01/10/2014