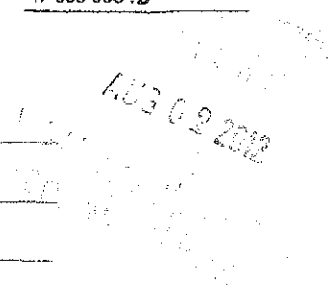


State of West Virginia
Department of Environmental Protection
Office of Oil and Gas
Well Operator's Report of Well Work

DATE: 4/5/2012
API #: 47-085-09912



Farm name: HD Barker Operator Well No.: W-1615

LOCATION: Elevation: 685' Quadrangle: Smithville

District: Murphy County: Richie
Latitude: 1260 Feet South of 39 Deg. 5 Min. 00 Sec.
Longitude 4990 Feet West of 81 Deg. 02 Min. 30 Sec.

Company: Haight Energy Corporation

Address:	Casing & Tubing	Used in drilling	Left in well	Cement fill up Cu. Ft.
HC 68 Box 14 Smithville, WV 26178	13-3/8"	41'	41'	
Agent: Warren R. Haight	9-5/8"	379'	379'	To Surface
Inspector: David Cowan	7"	1727'	1727'	To Surface
Date Permit Issued: January 25, 2011	4-1/2"	5538'	5538'	3038' (150 Sks)
Date Well Work Commenced: 08/8/2011				
Date Well Work Completed: 4/5/2012				
Verbal Plugging:				
Date Permission granted on:				
Rotary <input type="checkbox"/> Cable <input type="checkbox"/> Rig <input type="checkbox"/>				
Total Vertical Depth (ft): 5,570'				
Total Measured Depth (ft): 5,586'				
Fresh Water Depth (ft.): 20'				
Salt Water Depth (ft.): None				
Is coal being mined in area (N/Y)? No				
Coal Depths (ft.): None				
Void(s) encountered (N/Y) Depth(s) None				

OPEN FLOW DATA (If more than two producing formations please include additional data on separate sheet)

Producing formation Benson/Alexander Pay zone depth (ft) 4750, 5350'
Gas: Initial open flow show MCF/d Oil: Initial open flow - Bbl/d
Final open flow 100 MCF/d Final open flow - Bbl/d
Time of open flow between initial and final tests 12 Hours
Static rock Pressure 1000 psig (surface pressure) after 24 Hours

Second producing formation Elk Pay zone depth (ft) 5500'
Gas: Initial open flow show MCF/d Oil: Initial open flow - Bbl/d
Final open flow 100 MCF/d Final open flow - Bbl/d
Time of open flow between initial and final tests 12 Hours
Static rock Pressure 1000 psig (surface pressure) after 24 Hours

I certify under penalty of law that I have personally examined and am familiar with the information submitted on this document and all the attachments and that, based on my inquiry of those individuals immediately responsible for obtaining the information I believe that the information is true, accurate, and complete.

Warren R. Haight
Signature

4/5/12
Date

AUG 09 2011

Were core samples taken? Yes _____ No X

Were cuttings caught during drilling? Yes _____ No X

Were Electrical, Mechanical or Geophysical logs recorded on this well? If yes, please list Gamma Ray, Neutron, Density, Induction, Temp., Audio

NOTE: IN THE AREA BELOW PUT THE FOLLOWING: 1). DETAILS OF PERFORATED INTERVALS, FRACTURING OR STIMULATING, PHYSICAL CHANGE, ETC. 2). THE WELL LOG WHICH IS A SYSTEMATIC DETAILED GEOLOGICAL RECORD OF THE TOPS AND BOTTOMS OF ALL FORMATIONS, INCLUDING COAL ENCOUNTERED BY THE WELLBORE FROM SURFACE TO TOTAL DEPTH.

Perforated Intervals, Fracturing, or Stimulating:

Perforated by Superior Well Services 9/15/2011

Perforations at: 4612' - 4778' ; 5297' - 5360' ; 5465' - 5530'

Fractured by Universal Well Services 9/17/2011

3 Stage Nitrogen Frac totaling 1,950,000 cubic feet

Plug Back Details Including Plug Type and Depth(s):

Formations Encountered:	Top Depth	Bottom Depth
Surface:		

See attached worksheet

Barker W-1615
 API # 47-085-09913

Formation	Top	Bottom	Remarks
Red Rock & Shale	0	350	
Sand	350	378	
Red Rock	378	454	
Sand	454	475	
Red Rock	475	535	
Slate	535	692	
Dunkard Sand	692	702	
Slate & Shells	702	924	
Gas Sand	924	1044	
Slate	1044	1102	
1st Salt Sand	1102	1168	
Shale	1168	1210	
2nd Salt Sand	1210	1234	
Shale	1234	1260	
3rd Salt Sand	1260	1372	
Slate	1372	1451	
Maxon Sand	1451	1485	
Shale	1485	1554	
Little lime	1554	1575	
Pencil Cave	1575	1584	
Big Lime	1584	1700	
Big Injun Sand	1700	1798	
Slate Break	1784	1834	
Slate & Shells	1834	2136	
Coffee Shale	2136	2164	
Berea Sand	2164	2172	
Slate & Shells	2172	2547	
Gordon	2546	2555	
Slate & Shells	2555	3185	
Warren	3185	3220	
Slate & Shells	3220	4194	
Riley	4194	4202	
Slate & Shells	4202	4758	
Benson Sand	4758	4774	
Slate & Shells	4774	5322	
Alexander Sand	5322	5350	
Slate & Shells	5350	5393	
Shells & Shale	5393	5486	
Slate & Shells	5486	5560	
Elk	5560	5572	
TD	5586		