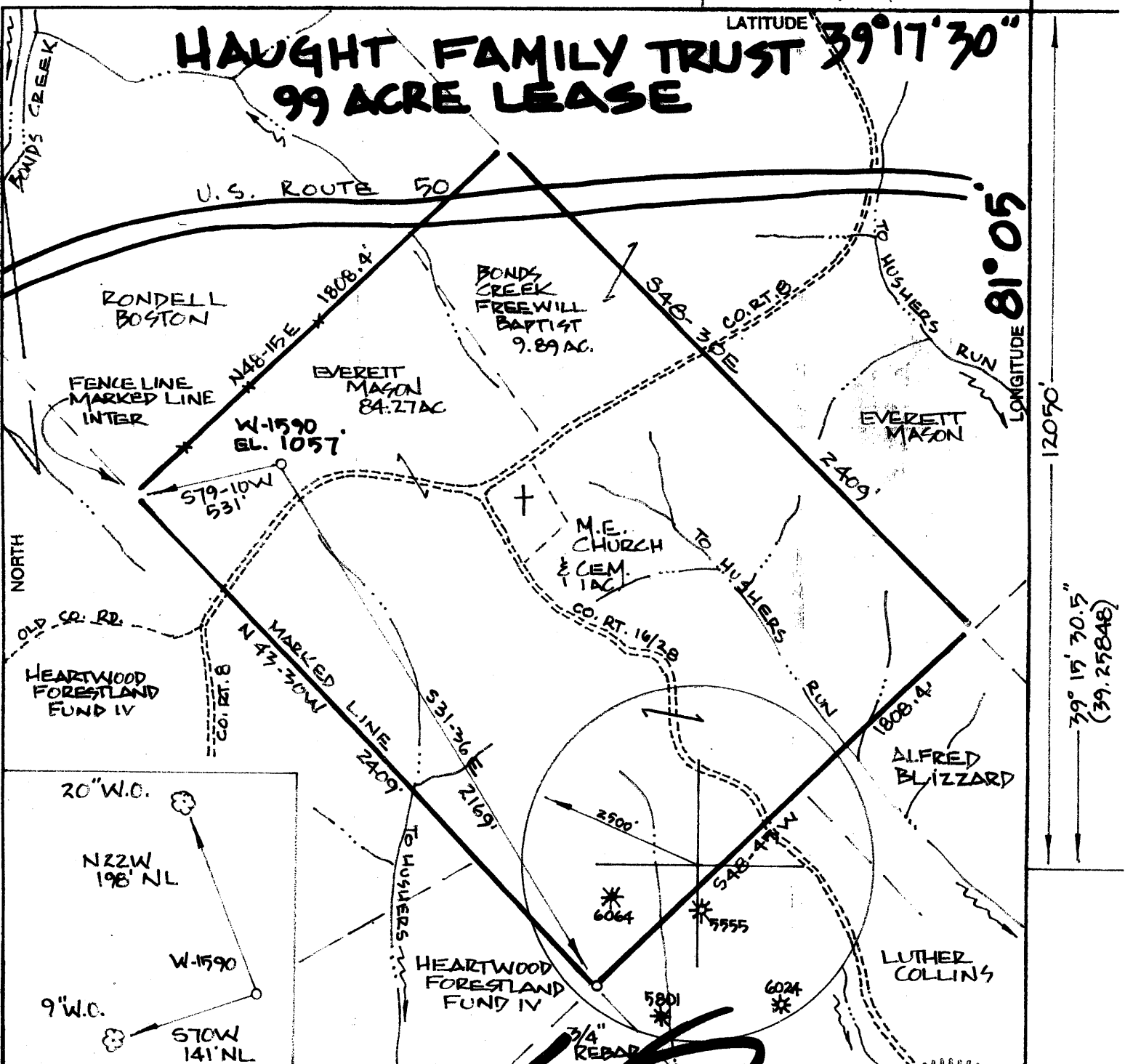


81°05'59.3"
(81.09980)

4460'

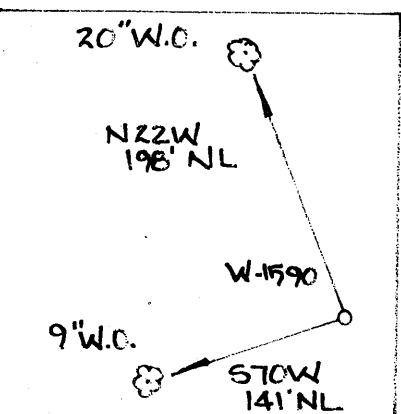
HAUGHT FAMILY TRUST 39°17'30" 99 ACRE LEASE



LONGITUDE 81°05'

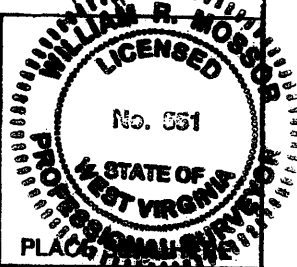
12050'

39°17'30.5"
(39.29181)



FILE NO. _____
 DRAWING NO. _____
 SCALE 1" = 500'
 MINIMUM DEGREE OF ACCURACY 1:200'
 PROVEN SOURCE OF ELEVATION G.P.S. OBSERVATION

I THE UNDERSIGNED HEREBY CERTIFY THAT THIS PLAT IS CORRECT TO THE BEST OF MY KNOWLEDGE AND BELIEF AND SHOWS ALL THE INFORMATION REQUIRED BY LAW AND THE REGULATIONS IN THIS STATE DESCRIBED BY THE DEPARTMENT OF ENERGY AND NATURAL RESOURCES.
 (SIGNATURE) _____ P.S. 551



STATE OF WEST VIRGINIA
 DEPARTMENT OF ENERGY
 DIVISION OF OIL AND GAS

DATE MARCH 31 2008
 OPERATOR'S WELL NO. W-1590
 API WELL NO. 47-085-09721

WELL TYPE: OIL GAS LIQUID INJECTION _____ WASTE DISPOSAL _____
 (IF "GAS,") PRODUCTION STORAGE _____ DEEP _____ SHALLOW

LOCATION: ELEVATION 1057 WATER SHED HUSHERS RUN & BONDS CREEK
 DISTRICT GRANT COUNTY BITCHIE

QUADRANGLE ELLENBORO

SURFACE OWNER EVERETT MASON ACREAGE 84.27
 OIL & GAS ROYALT HAUGHT FAMILY TRUST LEASE AC 99

PROPOSED WORK: DRILL CONVERT _____ DRILL DEEPER _____ REDRILL _____ FRACTURE OR STIMULATE _____ PLUG OFF OLD FORMATION _____ PERFORATE NEW FORMATION _____ OTHER PHYSICAL CHANGE IN WELL (SPECIFY) _____

PLUG AND ABANDON _____ CLEAN OUT AND REPLUG _____

TARGET FORMATION MARCELLUS SHALE ESTIMATED DEPTH 6300'
 WELL OPERATOR TRANS-CAPITAL INVEST DESIGNATED AGENT WARREN HAUGHT
 ADDRESS HC 68 BOX 14 SMITHVILLE, WV 26178 ADDRESS HC 68 BOX 14 SMITHVILLE, WV 26178

COUNTY NAME RIT
PERMIT 9721

Bonds Creek 66 (83)

APR 18 2008

WR-35
Rev (5-01)

DATE: October 10, 2008
API #: 47-085-09721

CR-D

State of West Virginia
Department of Environmental Protection
Office of Oil and Gas

Well Operator's Report of Well Work

Farm name: Everett Mason Operator Well No.: W-1590

LOCATION: Elevation: 1057' Quadrangle: Ellenboro

District: Grant County: Ritchie
Latitude: 12050 Feet South of 39 Deg. 17 Min. 30 Sec.
Longitude 4460 Feet West of 81 Deg. 05 Min. Sec.

Company: Trans Capital Investment
Whittle Corporation

	Casing & Tubing	Used in drilling	Left in well	Cement fill up Cu. Ft.
Address: HC 68 Box 14 Smithville, WV 26178				
Agent: Warren R. Haught	13 3/8"	31'	31'	
Inspector: David Cowan				
Date Permit Issued: 04/17/08	9 5/8"	321'	321'	Cement to surface
Date Well Work Commenced: 07/02/08				
Date Well Work Completed: 09/30/08	7"	2090'	2090'	Cement to surface
Verbal Plugging:				
Date Permission granted on:	4 1/2"	6140'	6140'	2000' fill up
Rotary Cable Rig				
Total Depth (feet): 6146'				
Fresh Water Depth (ft.): 190'				
Salt Water Depth (ft.): None				
Is coal being mined in area (N/Y)? N				
Coal Depths (ft.):				

OPEN FLOW DATA

Producing formation Marcellus Shale Pay zone depth (ft) 6033-6110
Gas: Initial open flow 500 MCF/d Oil: Initial open flow - Bbl/d
Final open flow MCF/d Final open flow Bbl/d
Time of open flow between initial and final tests 12 Hours
Static rock Pressure 1950 psig (surface pressure) after 24 Hours

Second producing formation Pay zone depth (ft)
Gas: Initial open flow MCF/d Oil: Initial open flow Bbl/d
Final open flow MCF/d Final open flow Bbl/d
Time of open flow between initial and final tests Hours
Static rock Pressure psig (surface pressure) after Hours

NOTE: ON BACK OF THIS FORM PUT THE FOLLOWING: 1). DETAILS OF PERFORATED INTERVALS, FRACTURING OR STIMULATING, PHYSICAL CHANGE, ETC. 2). THE WELL LOG WHICH IS A SYSTEMATIC DETAILED GEOLOGICAL RECORD OF ALL FORMATIONS, INCLUDING COAL ENCOUNTERED BY THE WELLBORE.

Signed: Trans-Capital Investment/ Whittle Corp.
By: Warren R. Haught, AGENT
Date 10/09/08

RECEIVED
Office of Oil & Gas

DEC 19 2008

WV Department of
Environmental Protection

OCT 02 2008

Perforated by: Superior Well Services 8/6/08
50 holes 6086'-6160'

Fraced by: Universal Well Services, Inc. 9/25/08
10,000 bbls slick water 90,000 sks sand

Mason W-1590
API # 47-085-09721

Formation	Top	Bottom	Remarks
Red Rock & Shale	0	640	
Sand	640	675	
Red Rock	675	755	
Sand	755	775	
Red Rock	775	830	
Slate	830	910	
Dunkard Sand	910	920	
Slate & Shells	920	1300	
Gas Sand	1300	1410	
Slate	1410	1478	
1st Salt Sand	1478	1538	
Shale	1538	1574	
2nd Salt Sand	1574	1592	
Shale	1592	1620	
3rd Salt Sand	1620	1730	
Slate	1730	1816	
Maxon Sand	1816	1855	
Shale	1855	1925	
Little lime	1925	1950	
Pencil Cave	1950	1954	
Big Lime	1954	2052	
Big Injun Sand	2052	2112	
Slate Break	2112	2116	Slight Show
Squaw Sand	2116	2130	Gas 2050'
Slate & Shells	2130	2394	
Coffee Shale	2394	2428	
Berea Sand	2428	2432	
Slate & Shells	2432	2548	
Sand	2548	2560	
Slate & Shells	2560	2820	
Sand	2820	2832	
Slate & Shells	2832	4464	
Benson Sand	4464	4490	
Slate & Shells	4490	4985	
Alexander Sand	4985	4996	
Slate & Shells	4996	5394	
Sand	5394	5414	
Slate & Shells	5414	6044	Gas Show 6050
Hamilton Shale	6044	6068	
Tully Lime	6068	6072	
Marcellus Shale	6072	6110	Gas Show 6100
Onondaga Lime	6110		
TD	6146		

OCT 02 2009