

Longitude - 81° 17' 07.5"

10,050'

LATITUDE 39° 10' 00"

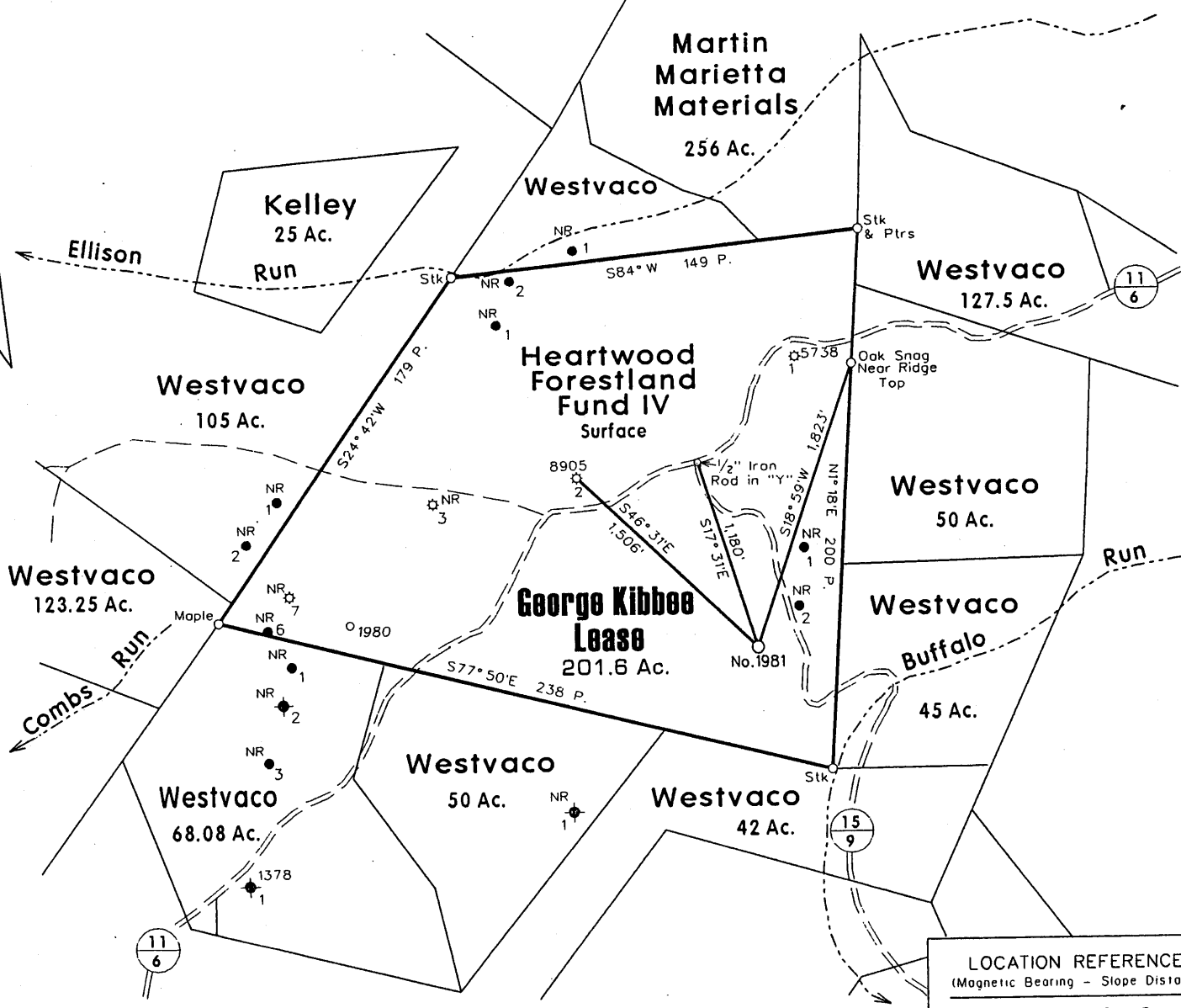
NOTES

- TIE LINES SHOWN ARE REFERENCED TO STATE PLANE GRID NORTH (WV NORTH ZONE, NAD 27).
- SURFACE OWNER INFORMATION FROM THE RECORDS OF THE RITCHIE COUNTY ASSESSOR'S OFFICE.
- LAT./LONG. AND TIE LINES ESTABLISHED BY DGPS (SUB-METER MAPPING GRADE.)
- LEASE BOUNDARY DESCRIPTION FROM DEED IN DB 144, PG 455.



DEEP WELL NOTES

1. NO LEASE BOUNDARIES ARE LOCATED LESS THAN 400' FROM PROPOSED WELL.
2. THERE ARE NO PRODUCING DEEP WELLS LOCATED LESS THAN 3000' FROM PROPOSED WELL.



LOCATION REFERENCES
(Magnetic Bearing - Slope Distance)

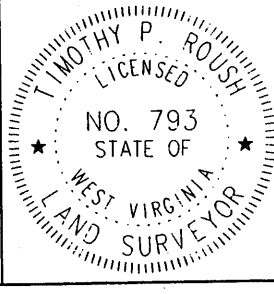
N26° W	122'	Oak Sprout
N54° E	129'	6" Poplar

◆ - DENOTES A POSSIBLE WATER SUPPLY SOURCE.
 (+) DENOTES LOCATION OF WELL ON UNITED STATES TOPOGRAPHIC MAPS

FILE NO. 113-16
 DRAWING NO. 2
 SCALE 1" = 1000'
 MINIMUM DEGREE OF ACCURACY Sub-Meter
 PROVEN SOURCE OF ELEVATION DGPS Survey

I THE UNDERSIGNED, HEREBY CERTIFY THAT THIS PLAT IS CORRECT TO THE BEST OF MY KNOWLEDGE AND BELIEF AND SHOWS ALL THE INFORMATION REQUIRED BY LAW AND THE REGULATIONS ISSUED AND PRESCRIBED BY THE DEPARTMENT OF MINES.

(SIGNED) [Signature]
 TIMOTHY P. ROUSH PS 793



WEST VIRGINIA
 Division of Environmental Protection
 Office of Oil and Gas
 601 57th Street
 Charleston, West Virginia 25304



DATE February 24, 2006
 FARM George Kibbee No. 1981
 API WELL NO. 47-085-09348

WELL TYPE: OIL GAS LIQUID INJECTION WASTE DISPOSAL
 (IF "GAS") PRODUCTION STORAGE DEEP SHALLOW
 LOCATION: ELEVATION 912' WATERSHED Buffalo Run
 DISTRICT Grant COUNTY Ritchie
 QUADRANGLE Petroleum 7.5'
 SURFACE OWNER Heartwood Forestland Fund IV ACREAGE 201.6 Ac.
 OIL & GAS ROYALTY OWNER Gordon Kibbee LEASE ACREAGE 201.6 Ac.
 LEASE NO. _____
 PROPOSED WORK: DRILL CONVERT DRILL DEEPER REDRILL FRACTURE OR STIMULATE PLUG OFF OLD FORMATION PERFORATE NEW FORMATION OTHER PHYSICAL CHANGE IN WELL (SPECIFY) _____

PLUG AND ABANDON CLEAN OUT AND REPLUG
 TARGET FORMATION Marcellus ESTIMATED DEPTH 5,500'
 WELL OPERATOR Linn Operating, Inc. DESIGNATED AGENT Judson Shreves
 ADDRESS P.O. Box 368 ADDRESS P.O. Box 368
Glenville, WV 26351 Glenville, WV 26351

MAY 05 2006

LONGITUDE 81° 15' 00"

Latitude - 39° 09' 49.5" - 1,050'

RIT 9348

WR-35

Date January 26, 2007
API # 47-085-09348

State of West Virginia
Division of Environmental Protection
Section of Oil and Gas
Well Operator's Report of Well Work

Farm Name: Heartwood Forestland Operator Well No.: Kibbee 1981

LOCATION: Elevation: 912' Quadrangle: Petroleum 7.5
District: Grant County: Ritchie
Latitude: 1050 feet South of 39 DEG. 10 MIN. 0" SEC.
Longitude: 10050 feet West of 81 DEG. 15 MIN. 00" SEC.

Company: Linn Operating, Inc
480 Industrial Park Road
Jane Lew, WV 26378

Agent: Gary Beall
Inspector: Steve Mossor
Permit Issued: 5/3/2006
Well Work Commenced: August 16, 2006
Well Work Completed: August 24, 2006
Verbal Plugging: _____
Permission granted on:
Rotary X Cable _____
Total Depth (feet) 5250
Fresh Water Depths (ft) 760'
Salt Water Depths (ft) None
Is coal being mined in area (Y / N) ? N
Coal Depths (ft) N/A

Casing & Tubing Size	Used in Drilling	Left In Well	Cement Fill Up Cu. Ft.
13 3/8"	44'	44'	sand in
9 5/8"	220'	220'	75 sks
7"	1138"	1138'	155 sks
4 1/2"	5181'	5181'	252 sks

OPEN FLOW DATA

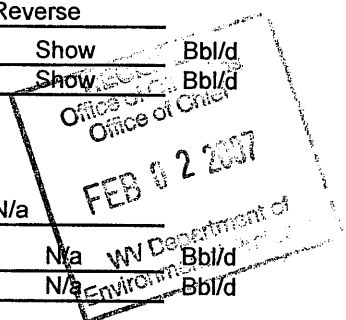
Producing Formation See Treatment Pay Zone See Reverse
Depth (ft) _____
Gas: Initial Open Flow 0' MCF/d Oil: Initial Open Flow Show Bbl/d
Final Open Flow odor MCF/d Final Open Flow Show Bbl/d
Time of open flow between initial and final tests _____ Hours
Static rock pressure 438 psig surface pressure after 24 Hours

Second Producing Formation N/a Pay Zone N/a
Depth (ft) _____
Gas: Initial Open Flow N/a MCF/d Oil: Initial Open Flow N/a Bbl/d
Final Open Flow N/a MCF/d Final Open Flow N/a Bbl/d
Time of open flow between initial and final tests _____ Hours
Static rock pressure N/a psig surface pressure after N/a Hours

NOTE: ON BACK OF THIS FORM PUT THE FOLLOWING: 1.) DETAILS OF PERFORATED INTERVALS, FRACTURING OR STIMULATING, PHYSICAL CHANGE, ETC. 2.) THE WELL LOG WHICH IS SYSTEMATIC DETAILED GEOLOGICAL RECORD OF ALL FORMATIONS, INCLUDING COAL ENCOUNTERED BY THE WELLBORE.

For: Linn Operating, Inc.

By: [Signature] 1-31-07
Date: _____



MAR 09 2007

RIT 9348

Details Of Perforated Intervals, Fracturing, or Stimulating Physical Change Etc.

1	Marcellous Shale	5026-5116 126 Shots	Slick Water Frac: Breakdown 1510 psig; Avg Treating 3310 psig @ 53 bpm; 620 sacks 30/50 sand; 5720 bbls slurry; ISIP 2280; 5 min: 1950; 10 min: 1680 psig.

<u>Formation color hard or soft</u>	<u>Top Fee Bottom Feet</u>		<u>Remarks</u>
surface rock	0	40	
sand/shale	40	260	
sand	260	305	
sand/shale	305	445	
sand	445	488	
sand/shale	488	849	
b lime	849	933	
sdv shale	933	1018	
squaw	1018	1042	
sand	1042	1050	
shale	1050	1329	
weir belca	1329	1450	
gantz	1450	1560	
gordon	1560	1850	
U Balltown	1850	2915	
L Balltown	2915	3070	
Riley	3070	3749	
Benson	3749	4070	
Genesee	4070	4590	
Marcellus	4590	4950	
onondaga lime	4950	5120	TD

MAR 09 2007