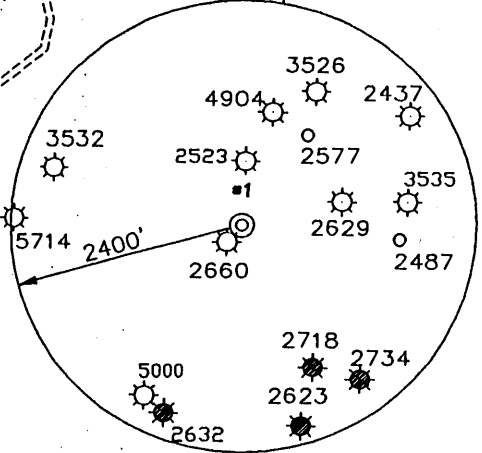
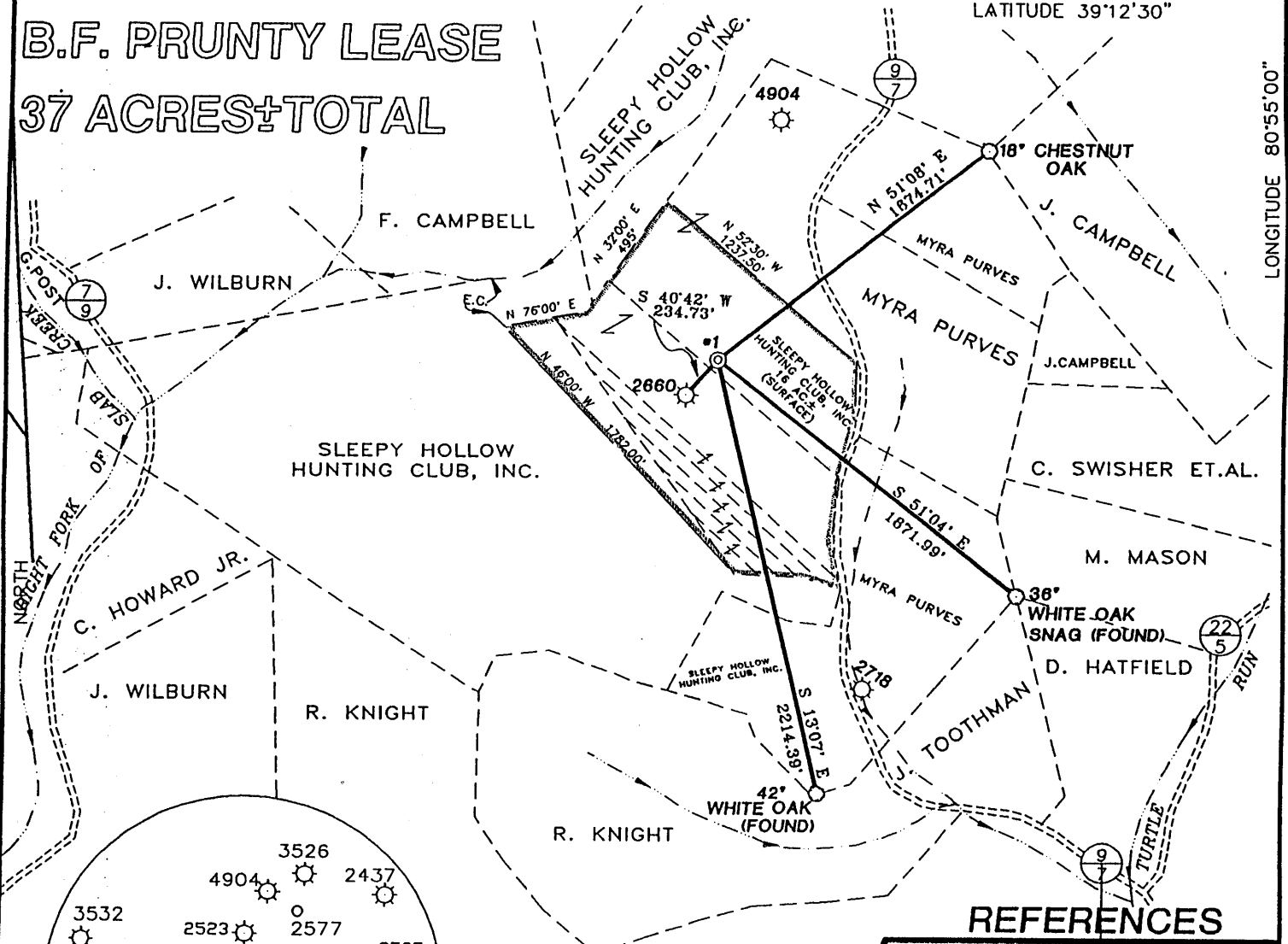
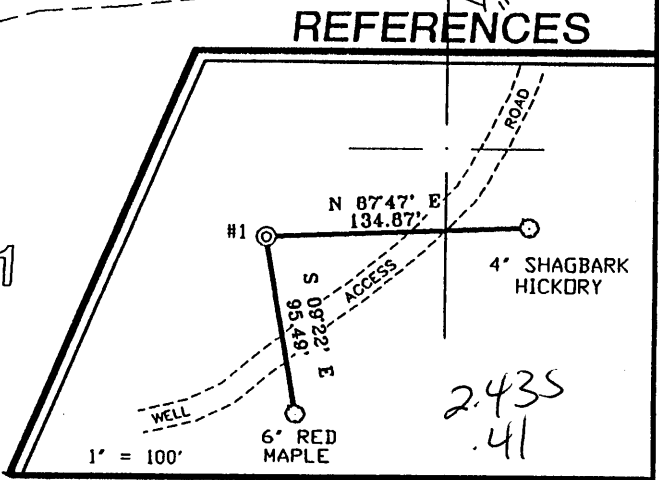


B.F. PRUNTY LEASE

37 ACRES± TOTAL

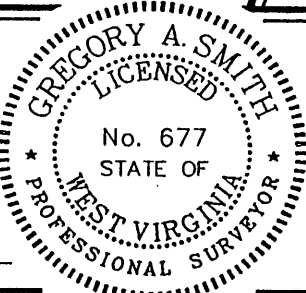


WELL NO. 1



I THE UNDERSIGNED, HEREBY CERTIFY THAT THIS PLAT IS CORRECT TO THE BEST OF MY KNOWLEDGE AND BELIEF AND SHOWS ALL THE INFORMATION REQUIRED BY LAW AND THE REGULATIONS ISSUED AND PRESCRIBED BY THE DEPARTMENT OF ENERGY.

P.S. 677 *Gregory A. Smith*



(+) DENOTES LOCATION OF WELL ON UNITED STATES TOPOGRAPHIC MAPS.
 DATE MAY 20, 19 98
 OPERATORS WELL NO. B.F. PRUNTY #1
 API WELL NO. 47-08508595
 STATE COUNTY PERMIT

MINIMUM DEGREE OF ACCURACY 1 / 200 FILE NO. 3950P1 (59-46)
 PROVEN SOURCE OF ELEVATION TOP OF KNOB ELEVATION 1139' SCALE 1" = 800'

STATE OF WEST VIRGINIA
 DIVISION OF ENVIRONMENTAL PROTECTION
 OFFICE OF OIL AND GAS



WELL TYPE : OIL GAS LIQUID INJECTION WASTE DISPOSAL IF "GAS" PRODUCTION STORAGE DEEP SHALLOW

LOCATION :
 ELEVATION 1098' WATERSHED TRIBUTARY OF TURTLE RUN
 DISTRICT UNION COUNTY RITCHIE QUADRANGLE PULLMAN 7.5'
 SURFACE OWNER SLEEPY HOLLOW HUNTING CLUB, INC. ACREAGE 16
 ROYALTY OWNER EMMA JANE PRUNTY HEIRS ET AL LEASE ACREAGE 37
 PROPOSED WORK : LEASE NO. _____
 DRILL CONVERT DRILL DEEPER REDRILL FRACTURE OR STIMULATE PLUG OFF OLD FORMATION PERFORATE NEW FORMATION PLUG AND ABANDON CLEAN OUT AND REPLUG OTHER _____
 PHYSICAL CHANGE IN WELL (SPECIFY) _____ TARGET FORMATION ALEXANDER
 ESTIMATED DEPTH 5600'

WELL OPERATOR KEY OIL COMPANY DESIGNATED AGENT JAN CHAPMAN
 ADDRESS 22 GARTON PLAZA WESTON, WV 26452 ADDRESS 22 GARTON PLAZA WESTON, WV 26452

APR 20 1999

6-6 129

COUNTY NAME RIT PERMIT 8595

WR-35

RECEIVED
Office of Oil & Gas
Permitting
AUG 23 1999
WV Division of
Environmental Protection

15 - Apr - 99
API # 47 - 085 - 8595

State of West Virginia
Division of Environmental Protection
Section of Oil and Gas

Reviewed ASD

Well Operator's Report of Well Work

Farm name: SLEEPY HOLLOW HUNTING CLUB, INC.

Operator Well No. : JANIE PRUNTY #1

LOCATION: Elevation: 1,098.00

Quadrangle: PULLMAN

District: UNION

County: RITCHIE

Latitude: 12820 Feet South of 39 Deg. 12 Min. 30 Sec.

Longitude: 2180 Feet West of 80 Deg. 55 Min. 00 Sec.

Company: KEY OIL COMPANY
22 GARTON PLAZA
WESTON, WV 26452-0000

Agent: JAN E. CHAPMAN

Inspector: SAM HERSMAN
 Permit Issued: 04/19/99
 Well Work Commenced: 05/25/99
 Well Work Completed: 05/29/99
 Verbal Plugging _____
 Permission granted on: _____
 Rotary X Cable _____ Rig
 Total Depth (feet) 5355'
 Fresh water depths (ft) 101', 467'
 Salt water depths (ft) NONE

| Casing & Tubing Size | Used in Drilling | Left In Well | Cement Fill Up Cu. Ft. |
|----------------------|------------------|--------------|------------------------|
| 8 5/8" | 1102.55' | 1102.55' | 280 sks To Surface |
| 4 1/2" | 5275' | 5275' | 533 sks |
| 2 3/8" | | 5160' | |

Is coal being mined in area (Y / N)? N
Coal Depths (ft): NONE

OPEN FLOW DATA

| | |
|-----------|---------------|
| Elizabeth | 3000' - 3300' |
| Warren | 3363' - 3448' |
| Balltown | 3792' - 4460' |
| Riley | 4492' - 4574' |
| Benson | 4902' - 4912' |
| Elk | 5084' - 5106' |

Producing formation Alexander Pay zone depth (ft) 5140' - 5218'
 Gas: Initial open flow 280 MCF / d Oil: Initial open flow 0 Bbl / d
 Final open flow 1,532 MCF / d Oil: Final open flow show Bbl / d
 Time of open flow between initial and final tests N/A Hours
 Static rock pressure 1750 psig (surface pressure) after 96 Hours

Second producing formation Commingled Pay zone depth (ft) _____
 Gas: Initial open flow _____ MCF / d Oil: Initial open flow _____ Bbl / d
 Final open flow _____ MCF / d Oil: Final open flow _____ Bbl / d
 Time of open flow between initial and final tests _____ Hours
 Static rock pressure _____ psig (surface pressure) after _____ Hours

NOTE: ON BACK OF THIS FORM PUT THE FOLLOWING: 1). DETAILS OF PERFORATED INTERVALS, FRACTURING OR STIMULATING, PHYSICAL CHANGE, ETC. 2). THE WELL LOG WHICH IS A SYSTEMATIC DETAILED GEOLOGICAL RECORD OF ALL FORMATIONS, INCLUDING COAL ENCOUNTERED BY THE WELLBORE.

For: KEY OIL COMPANY

By: [Signature]
Date: August 18, 1999

PRESIDENT

AUG 30 1999

RIT 8595

B.F. Prunty #1 (47-085 -8595)
Five Stage Foam Frac - Halliburton

| | | |
|------------------------|---|--|
| 1 st Stage: | Alexander (12 holes) (5180.75' to 5216.25') Elk (4 holes) (5095' to 5101.75') | 60 Quality Foam. 500 gal. 15% HCL. 60,000# 20/40 sand, 550,000 SCF N2, 811 bbls foam. |
| 2 nd Stage: | Benson (12 holes) (4905.75' to 4908.50') | 60 Quality Foam. 750 gal 15% HCL. 40,000# 20/40 sand, 417,000 SCF N2, 616 bbls foam. |
| 3 rd Stage: | Riley (7 holes) (4537.50' to 4539') Balltown (9 holes) (4155.50' to 4335') | 60 Quality Foam. 1,000 gal 15% HCL. 5,000# 80/100 sand, 45,000# 20/40 sand, 502,000 SCF N2, 743 bbls foam. |
| 4 th Stage: | Balltown (10 holes) (3808.25' to 3911.75') Warren (8 hole) (3420.75' to 3437.25) | 5,000# 80/100 sand, 45,000# 20/40 sand, 502,000 SCF N2, 638 bbls foam. |
| 5 th Stage: | Elizabeth (16 holes) (3019.50' to 3294') | 60 Quality Foam. 750 gal 15% HCL. 5,000# 80/100 sand, 45,000# 20/40 sand, 502,000 SCF N2, 684 bbls foam. |

WELL LOG

| | | | |
|-------------------------|------|------|---|
| KB-GL | 0 | 10 | |
| Clay | 10 | 14 | |
| Red Rock | 14 | 18 | |
| Sand & Shale | 18 | 282 | Damp @ 101' |
| Red Rock | 282 | 302 | |
| Sand & Shale | 302 | 320 | |
| Shale & Sand & Red Rock | 320 | 421 | |
| Sand & Shale | 421 | 532 | ½" H ² O @ 467' |
| Sand & Shale & Red Rock | 532 | 1179 | |
| Sand & Shale | 1179 | 1805 | |
| Maxton | 1805 | 1970 | |
| Little Lime | 1970 | 1978 | |
| Shale | 1978 | 2008 | |
| Big Lime | 2008 | 2040 | |
| Big Injun | 2040 | 2108 | |
| Shale | 2108 | 2317 | |
| Weir | 2317 | 2442 | |
| Sand & Shale | 2442 | 2871 | |
| Gordon | 2871 | 2882 | |
| Shale | 2882 | 3000 | |
| Elizabeth | 3000 | 3300 | |
| Shale | 3300 | 3363 | |
| Warren | 3363 | 3448 | Gas Checks |
| Shale | 3448 | 3464 | 1922' - No Show |
| Speechley | 3464 | 3778 | 2509' - Odor |
| Shale | 3778 | 3792 | 3134' - 74/10 ^{ths} 2" w/ H ² O |
| Balltown | 3792 | 4460 | 3725' - 70/10 ^{ths} 2" w/ H ² O |
| Shale | 4460 | 4492 | 4529' - 70/10 ^{ths} 2" w/ H ² O |
| Riley | 4492 | 4574 | 4900' - 70/10 ^{ths} 2" w/ H ² O |
| Shale | 4574 | 4902 | 5119' - 70/10 ^{ths} 2" w/ H ² O |
| Benson | 4902 | 4912 | TD - 44/10 ^{ths} 2" w/ H ² O |
| Shale | 4912 | 5084 | |
| Elk | 5084 | 5106 | |
| Shale | 5106 | 5140 | |
| Alexander | 5140 | 5218 | |
| Sand & Shale | 5218 | 5355 | |
| T.D. | 5355 | | |