

A-D

9600'

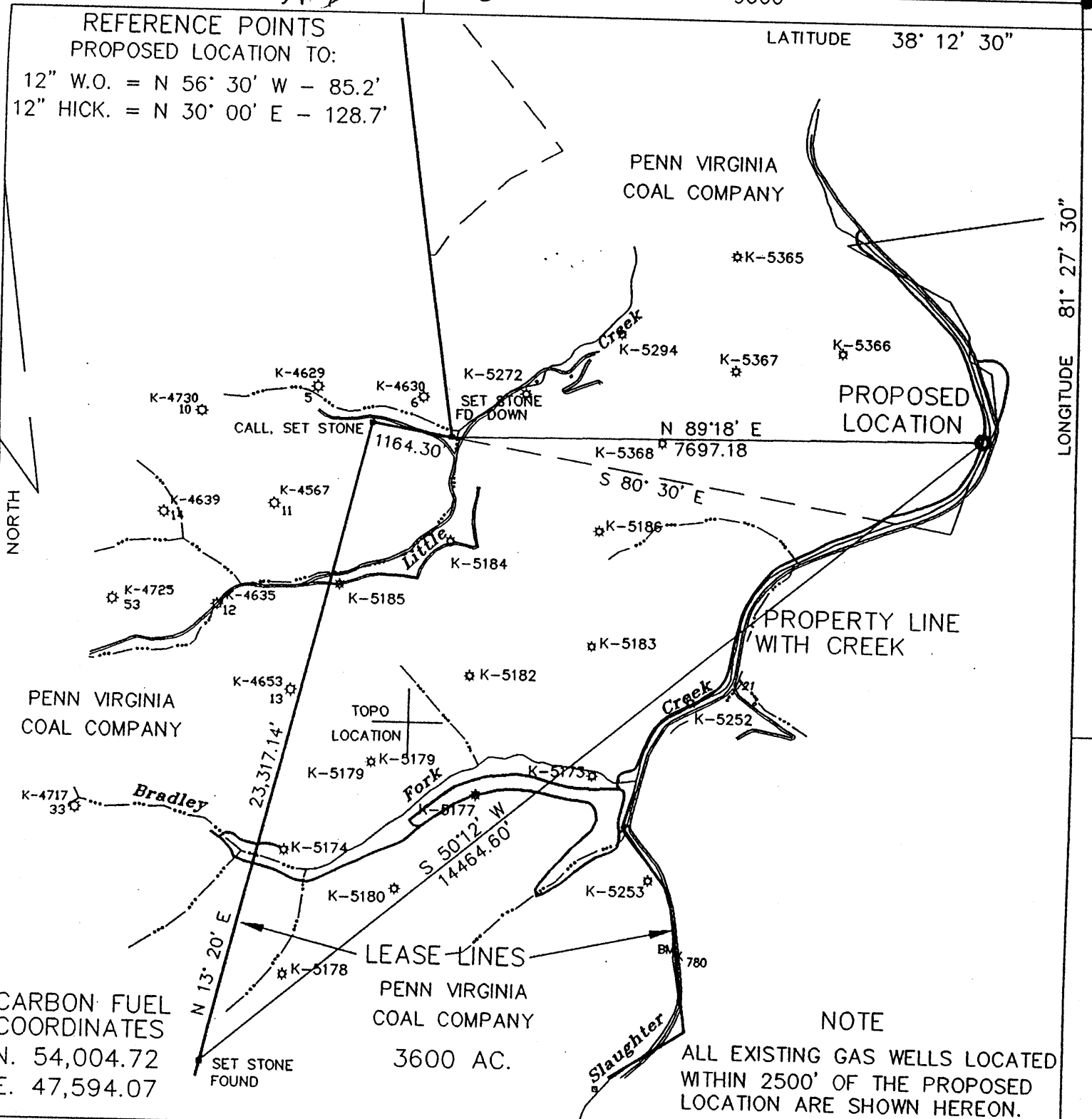
10400'

10400'

REFERENCE POINTS
PROPOSED LOCATION TO:

12" W.O. = N 56° 30' W - 85.2'
12" HICK. = N 30° 00' E - 128.7'

LATITUDE 38° 12' 30"



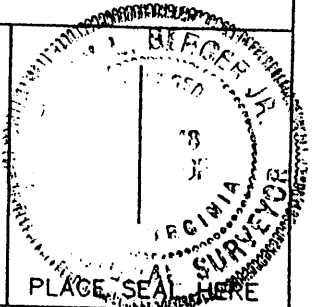
CARBON FUEL COORDINATES
N. 54,004.72
E. 47,594.07

LEASE LINES
PENN VIRGINIA COAL COMPANY
3600 AC.

NOTE
ALL EXISTING GAS WELLS LOCATED
WITHIN 2500' OF THE PROPOSED
LOCATION ARE SHOWN HEREON.

FILE NO. CARBON BOND TRACT
DRAWING NO. _____
SCALE 1" = 2000'
MINIMUM DEGREE OF
ACCURACY 1 : 2500
PROVEN SOURCE OF
ELEVATION G.P.S. DATA POINTS

I THE UNDERSIGNED, HEREBY CERTIFY THAT
THIS PLAT IS CORRECT TO THE BEST OF MY
KNOWLEDGE AND BELIEF AND SHOWS ALL THE
INFORMATION REQUIRED BY LAW AND THE REGU-
LATIONS ISSUED AND PRESCRIBED BY THE DEPART-
MENT OF ENERGY
(SIGNED) Harry J. Berger, Jr.
R.P.E. _____ L.L.S. 248



STATE OF WEST VIRGINIA
DEPARTMENT OF ENVIROMENTAL PROTECTION
OIL AND GAS DIVISION



DATE MAY 16, 2002
OPERATOR'S WELL NO. C.F. 33
API WELL NO. _____

WELL TYPE: OIL GAS LIQUID INJECTION WASTE DISPOSAL
(IF "GAS,") PRODUCTION STORAGE DEEP SHALLOW
LOCATION: ELEVATION 677' WATERSHED SLAUGHTERS CREEK OF THE KANAWHA RIVER
DISTRICT CABIN CREEK COUNTY KANAWHA
QUADRANGLE Cedar Grove

SURFACE OWNER PENN VIRGINIA COAL COMPANY ACREAGE 3600
OIL & GAS ROYALTY OWNER PENN VIRGINIA COAL COMPANY LEASE ACREAGE 3600
LEASE NO. _____

PROPOSED WORK: DRILL CONVERT DRILL DEEPER REDRILL FRACTURE OR
STIMULATE PLUG OFF OLD FORMATION PERFORATE NEW
FORMATION OTHER PHYSICAL CHANGE IN WELL (SPECIFY) _____

PLUG AND ABANDON CLEAN OUT AND REPLUG
TARGET FORMATION Berea ESTIMATED DEPTH 2600'
WELL OPERATOR NORTHSTAR ENERGY COPORATION DESIGNATED AGENT W. THOMAS WHITE
ADDRESS 1 MEADOW ROAD ADDRESS 1 MEADOW ROAD
DUNBAR WV 25064 DUNBAR WV 25064

NOV 27 2002

24/ Slaughter Creek to be

COUNTY NAME KAN
PERMIT 5541

State of West Virginia
DEPARTMENT OF ENERGY
Division of Oil and Gas
Well Operator's Report of Well Work

Handwritten initials MB

Farm Name: Carbon Fuel
Location: Elevation: 677'
District: Cabin Creek
Latitude: 10,400' Feet South of
Longitude: 9,600' Feet West of

Operator Well No. CF #33
Quadrangle: Cedar Grove
County: Kanawha
38 Degrees 12 Minutes 30 Seconds
81 Degrees 27 Minutes 30 Seconds

Company: Northstar Energy Corporation
1018 Kan. Blvd. E., Suite 309
Charleston, WV 25301

Agent: W. Thomas White
Inspector: Carlos Hively
Permit Issued: 11-25-02
Well work Commenced: 12-17-02
Well work Completed: 12-23-02
Verbal Plugging Permission granted on: N/A
Rotary x Cable Tool Rig
Total Depth (feet): LTD- 2302' DTD-2306'
Fresh water depths (ft): 78'
Salt water depths (ft):
Is coal being mined in area: no
Coal Depths: none recorded

Table with 4 columns: Casing & Tubing Size, Used in Drilling, Left in well, Cement Fill Up Cu. Ft. Rows include 13 3/8", 9 5/8", 7", and 4 1/2" casing sizes.

Office of Oil & Gas Permitting
JUN 16 2003
WV Department of Environmental Protection

OPEN FLOW DATA:

Producing formation(s): Big Lime, Big Injun, Weir, Berea Pay zone depth (ft) See back
Gas: Initial open flow no show MCF/D Oil: Initial open flow Bbl/d
Final open flow 280 MCF/D Final open flow Bbl/d
Time of open flow between initial and final tests: 168 Hours
Static rock Pressure 450 psig (surface pressure)after 168 Hours

Second producing formation(s): Pay zone depth (ft) See back
Gas: Initial open flow MCF/D Oil: Initial open flow Bbl/d
Final open flow MCF/D Final open flow Bbl/d
Time of open flow between initial and final tests: Hours
Static rock Pressure psig (surface pressure)after Hours

NOTE: ON BACK OF THIS FORM PUT THE FOLLOWING; 1). DETAILS OF PERFORATED INTERVALS, FRACTURING OR STIMULATING, PHYSICAL CHANGE, ETC. 2). THE WELL LOG WHICH IS A SYSTEMATIC DETAILED GEOLOGICAL RECORD OF ALL FORMATIONS, INCLUDING COAL ENCOUNTERED BY THE WELLBORE.

FOR: Northstar Energy Corporation
BY: W. Thomas White
DATE: 6-12-03

AUG 01 2003

KAN 5541

12-29-2002

MIRU Fisher Well Surveys, run GR/CTL/CCL. Logger's TD – 2250'. Calc TOC – 1040', Actual TOC – 1550'. Marker joint at 1442-1452'. Perforate Berea.

12-30-2002

MIRU DS Schlumberger Oilfield Services to conduct 3-stage completion. Top pressure set at 4000 psi. 250 gals. 15% HCl in hole. Break on fluid.

1st Stage - Berea (2163-2170', 14 holes) 75 Quality Foam Frac

6 Bbls. (250 gals) 15% HCl, 36,019 lbs. 20/40 sand, 1-4 ppg, 157 Bbls. Twtr, 223 Mscf, N₂ flush
BKDN – 920 psi, ATP – 2228 psi, AIR – 19.5 BPM, ISIP – 2359 psi, 3 Min SI – 2195 psi

Perforate Lower Weir. 3 3/8" frac baffle at 1987'. Dropped frac ball in 6 Bbls. (250 gals) 15% HCl, followed by N₂ breakdown.

Shutdown after breakdown to perforate Upper Weir.

2nd Stage - Lower Weir (1923-1932', 12 holes) 75 Quality Foam Frac

6 Bbls. (250 gals) 15% HCl, 20,490 lbs. 20/40 sand, 1-4 ppg, 93 Bbls. Twtr, 218 Msc, N₂ flush
BKDN – 3823 psi, ATP – 2450 psi, AIR – 20 BPM

Dropped 20 perf balls in 6 Bbls. HCl to ball out Lower Weir

3rd Stage - Upper Weir (1817-1834', 12 holes) 75 Quality Foam Frac

6 Bbls. (250 gals) 15% HCl, 23,196 lbs. 20/40 sand, 1-4 ppg, 91 Bbls. Twtr, 212 Mscf, N₂ flush
BKDN – 2966 psi, ATP – 2950 psi, AIR – 20 BPM, ISIP – 2430 psi

Perforate Big Injun. 3 9/16" baffle at 1768'. Dropped frac ball in 6 Bbls. (250 gals) 15% HCl, followed by N₂ breakdown.

Shutdown after Big Injun breakdown to perforate Big Lime. Backside pressured up as last hole was perforated.

4th Stage – Big Injun (1724-1730', 12 holes)

5th Stage – Big Lime (1610-1685', 11 holes)

RDMO DS Schlumberger and Fisher Well Surveys. RU flowback and open well on 1/4" choke.

Office of Oil & Gas
Permitting

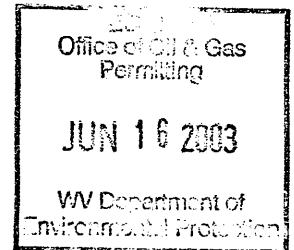
JUN 16 2003

WV Department of
Environmental Protection

JUN 01 2003

Formation Depths taken from Gamma Ray Log

Sub Base	0 - 10'	
Shale	10 - 85'	Wet at 78'
Sand	85 - 150'	
Sand & Shale	150 - 200'	
Sand	200 - 239'	
Shale	239 - 284'	
Sand	284 - 355'	
Sand & Shale	355 - 430'	
Shale	430 - 515'	
Sand & Shale	515 - 560'	
Salt Sand	560 - 982'	
Sand & Shale	982 - 1109'	
Shale	1109 - 1160'	
Maxton	1160 - 1325'	
Sand & Shale	1325 - 1441'	
Little Lime	1441 - 1481'	
Sand & Shale	1481 - 1510'	
Big Lime	1510 - 1721'	
Big Injun	1721 - 1743'	
Silt & Shale	1743 - 1816'	Gas check at 1747' - no show
Weir	1816 - 1937'	
Shale	1937 - 2141'	Gas check at 1970' - no show
Sunbury	2141 - 2153'	
Berea	2153 - 2175'	
Shale	2175 -	Gas check at 2213' - no show



Total Depth 2302'

Well logged by Allegheny Wireline Services, Inc.

AUG 01 2003

KAN 5541