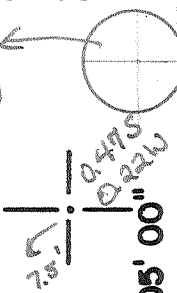
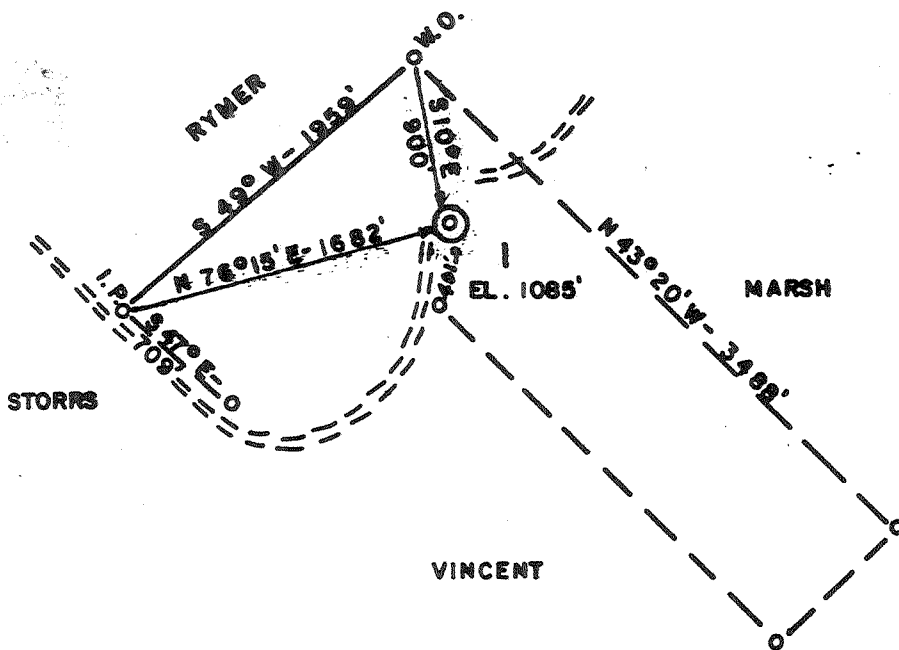


15'  
0.475  
0.22W



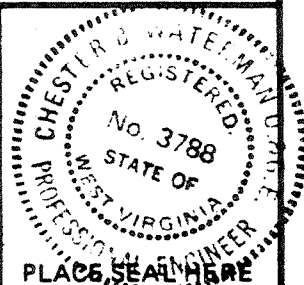
NORTH



2506  
CANC 30410  
99  
848  
5607

FILE NO. 81-558  
DRAWING NO. \_\_\_\_\_  
SCALE 1" = 1000'  
MINIMUM DEGREE OF ACCURACY 1/200'  
PROVEN SOURCE OF ELEVATION NOB (1156')

I THE UNDERSIGNED, HEREBY CERTIFY THAT THIS PLAT IS CORRECT TO THE BEST OF MY KNOWLEDGE AND BELIEF AND SHOWS ALL THE INFORMATION REQUIRED BY LAW AND THE REGULATIONS ISSUED AND PRESCRIBED BY THE DEPARTMENT OF MINES.  
(SIGNED) *Chester Waterman*  
R.P.E. 3788 L.L.S. \_\_\_\_\_



(+) DENOTES LOCATION OF WELL ON UNITED STATES TOPOGRAPHIC MAPS  
FORM IV-6 (8-78)



DATE 10/12, 1981  
OPERATOR'S WELL NO. 1  
API WELL NO. 47-085-5339  
STATE COUNTY PERMIT

STATE OF WEST VIRGINIA  
DEPARTMENT OF MINES  
OIL AND GAS DIVISION

WELL TYPE: OIL \_\_\_ GAS  LIQUID INJECTION \_\_\_ WASTE DISPOSAL \_\_\_  
(IF "GAS,") PRODUCTION  STORAGE \_\_\_ DEEP \_\_\_ SHALLOW \_\_\_  
LOCATION: ELEVATION 1085 WATER SHED HUSHERS RUN  
DISTRICT GRANT COUNTY RITCHIE  
QUADRANGLE HARRISVILLE 7.5 415' NO  
SURFACE OWNER WEST VACO ACREAGE 95  
OIL & GAS ROYALTY OWNER CLIFTON VALENTINE LEASE ACREAGE 95  
LEASE NO. \_\_\_\_\_  
PROPOSED WORK: DRILL  CONVERT \_\_\_ DRILL DEEPER \_\_\_ REDRILL \_\_\_ FRACTURE OR STIMULATE \_\_\_ PLUG OFF OLD FORMATION \_\_\_ PERFORATE NEW FORMATION \_\_\_ OTHER PHYSICAL CHANGE IN WELL (SPECIFY) \_\_\_\_\_  
PLUG AND ABANDON \_\_\_ CLEAN OUT AND REPLUG \_\_\_  
TARGET FORMATION SHALE ESTIMATED DEPTH 5990'  
WELL OPERATOR PANTHER FUEL CO. DESIGNATED AGENT DAVE HARMER  
ADDRESS P. O. BOX 245 ADDRESS SAME  
SHINNSTON, WV 26431

NOV 19 1981



IV-35  
(Rev 8-81)

Date October 5, 1982  
Operator's  
Well No. \_\_\_\_\_  
Farm C. Valentine (Marsh) #1  
API No. 47-085-5339

State of West Virginia  
Department of Mines  
Oil and Gas Division

WELL OPERATOR'S REPORT  
OF  
DRILLING, FRACTURING AND/OR STIMULATING, OR PHYSICAL CHANGE

WELL TYPE: Oil x / Gas x / Liquid Injection \_\_\_ / Waste Disposal \_\_\_ /  
(If "Gas," Production x / Underground Storage \_\_\_ / Deep \_\_\_ / Shallow \_\_\_ /)

LOCATION: Elevation: 1,085' Watershed HUISHERS RUIN  
District: Grant County Ritchie Quadrangle Harrisville 7.5'

COMPANY PANTHER FUEL COMPANY

ADDRESS P. O. Box 850, Bridgeport, WV 26330

DESIGNATED AGENT DONNALLY VILLERS

ADDRESS P. O. Box 647, Weston, WV 26452

SURFACE OWNER WESTVACO

ADDRESS Parkersburg, WV 26101

MINERAL RIGHTS OWNER Clifton C. Valentine

ADDRESS 4459 Edgerton Rd., N. Royalton Ohio 44133

OIL AND GAS INSPECTOR FOR THIS WORK K. Paul

Goodnight ADDRESS Smithfield, WV

PERMIT ISSUED November 5, 1981

DRILLING COMMENCED June 14, 1982

DRILLING COMPLETED June 19, 1982

IF APPLICABLE: PLUGGING OF DRY HOLE ON  
CONTINUOUS PROGRESSION FROM DRILLING OR  
REWORKING. VERBAL PERMISSION OBTAINED  
ON \_\_\_\_\_

Casing Tubing	Used in Drilling	Left in Well	Cement fill up Cu. ft.
Size 20-16 Cond.			
13-10"			
9 5/8			
8 5/8	1,190	1,190	to surface
7			
5 1/2			
4 1/2		5,823	600 sacks
3			
2			
Liners used			

GEOLOGICAL TARGET FORMATION Marcellus Depth 5,990 feet

Depth of completed well 5,823 feet Rotary x / Cable Tools \_\_\_\_\_

Water strata depth: Fresh \_\_\_\_\_ feet; Salt \_\_\_\_\_ feet

Coal seam depths: \_\_\_\_\_ Is coal being mined in the area? \_\_\_\_\_

OPEN FLOW DATA

Producing formation Rhine Street Hamilton Shale Pay zone depth 5,749 to 5,759 feet

Gas: Initial open flow Show Mcf/d Oil: Initial open flow -0- Bbl/d

Final open flow 485 Mcf/d Final open flow -0- Bbl/d

Time of open flow between initial and final tests 72 hours

Static rock pressure 1,800 psig (surface measurement) after 4 hours shut in

(If applicable due to multiple completion--)

Second producing formation Huron Brallier Shale Pay zone depth 3,910 to 3,960 feet

Gas: Initial open flow Show Mcf/d Oil: Initial open flow Show Bbl/d

Final open flow 300 Mcf/d Oil: Final open flow Show Bbl/d

Time of open flow between initial and final tests 72 hours

Static rock pressure 650 psig (surface measurement) after 4 hours shut in

Attached sheet show third producing formation

(Continue on reverse side)

85  
300  
400  
11 85  
MCF  
\*show  
oil  
FOP

RITCHIE 5339

DETAILS OF PERFORATED INTERVALS, FRACTURING OR STIMULATING, PHYSICAL CHANGE, ETC.

Halliburton 1,018,000 N<sub>2</sub> Six High Volume

WELL LOG

FORMATION	COLOR	HARD OR SOFT	TOP FEET	BOTTOM FEET	REMARKS Including indication of all fresh and salt water, coal, oil and gas
Big Lime			1,712	1,956	
Big Injun			1,956	2,052	Oil and Gas
Berea Cap			2,390		
Gantz Sand			2,410	2,460	
Gordon Sand			2,636	2,660	Gas
Fifth Sand			2,930	2,940	Gas
Brallier Shale			2,980	3,779	Oil and Gas
Harrell Shale			3,979	4,968	Gas
Hamilton Shale			4,968	5,840	Gas

TD. Rhinestreet @ TD.

chlr TD  
on log  
= 902

5840  
2390  
3450 Beria

5749  
2890  
2859

5840  
4400 = base horizon  
1440 = upl pky

(Attach separate sheets as necessary)

PANTHER FUEL COMPANY

Well Operator

By: [Signature] Vice-Pres.

Date: 1.11.1982

Note: Regulation 2.02(i) provides as follows:  
 "The term 'log' or 'well log' shall mean a systematic detailed geological record of all formations, including ... encountered in the drilling of a well."

THIRD PRODUCING FORMATION Huron Brallier Shale PAY ZONE DEPTH 3,630 - 3,690 FEET

GAS: Initial Open Flow Show Mcf/d OIL: Initial Open Flow Show Bbl/d

Final Open Flow 400 Mcf/d Final Open Flow Show Bbl/d

TIME OF OPEN FLOW BETWEEN INITIAL AND FINAL TESTS 72 HOURS

STATIC ROCK PRESSURE 580 PSIG (Surface Measurement) AFTER 4 HOURS SHUT IN

47-085-5339

RECORD 5339

FEB 28 1983