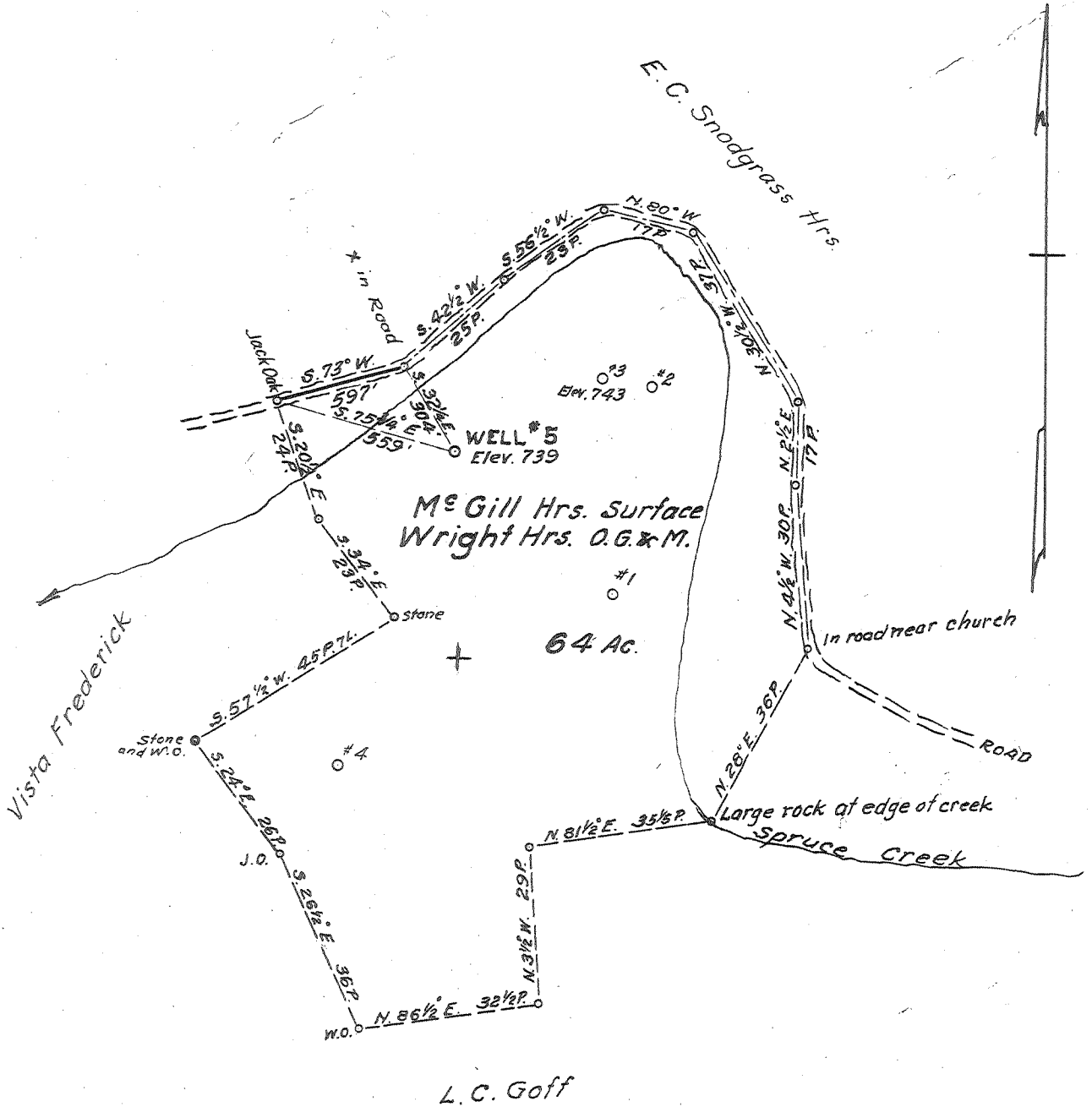


Latitude 39° 10'

Longitude 80° 55'



MINIMUM ERROR OF CLOSURE 1/500
 SOURCE OF ELEVATION Well #3 ~ Elev. 743

New Location
 Drill Deeper
 Abandonment

"I, THE UNDERSIGNED, HEREBY CERTIFY THAT THIS MAP IS CORRECT TO THE BEST OF MY KNOWLEDGE AND BELIEF AND SHOWS ALL THE INFORMATION REQUIRED BY PARAGRAPH 6 OF THE RULES AND REGULATIONS OF THE OIL AND GAS SECTION OF THE MINING LAWS OF WEST VIRGINIA."

Company Arthur & Kenneth Nicholson
 Address Smithville, W. Va.
 Farm McGill Hrs. - Surface (Wright Hrs. O.G. & M)
 Tract 1 Acres 64 Lease No. _____
 Well (Farm) No. 5 Serial No. _____
 Elevation (Spirit Level) 739
 Quadrangle Halbrook Wc
 County Ritchie District Murphy
 Engineer Parker E. Peters
 Engineer's Registration No. 485
 File No. _____ Drawing No. _____
 Date May 2, 1963 Scale 1" = 30 P.

STATE OF WEST VIRGINIA
 DEPARTMENT OF MINES
 OIL AND GAS DIVISION
 CHARLESTON
WELL LOCATION MAP
 FILE NO. RIT-2733

+ Denotes location of well on United States Topographic Maps, scale 1 to 62,500, latitude and longitude lines being represented by border lines as shown.
 — Denotes one inch spaces on border line of original tracing.