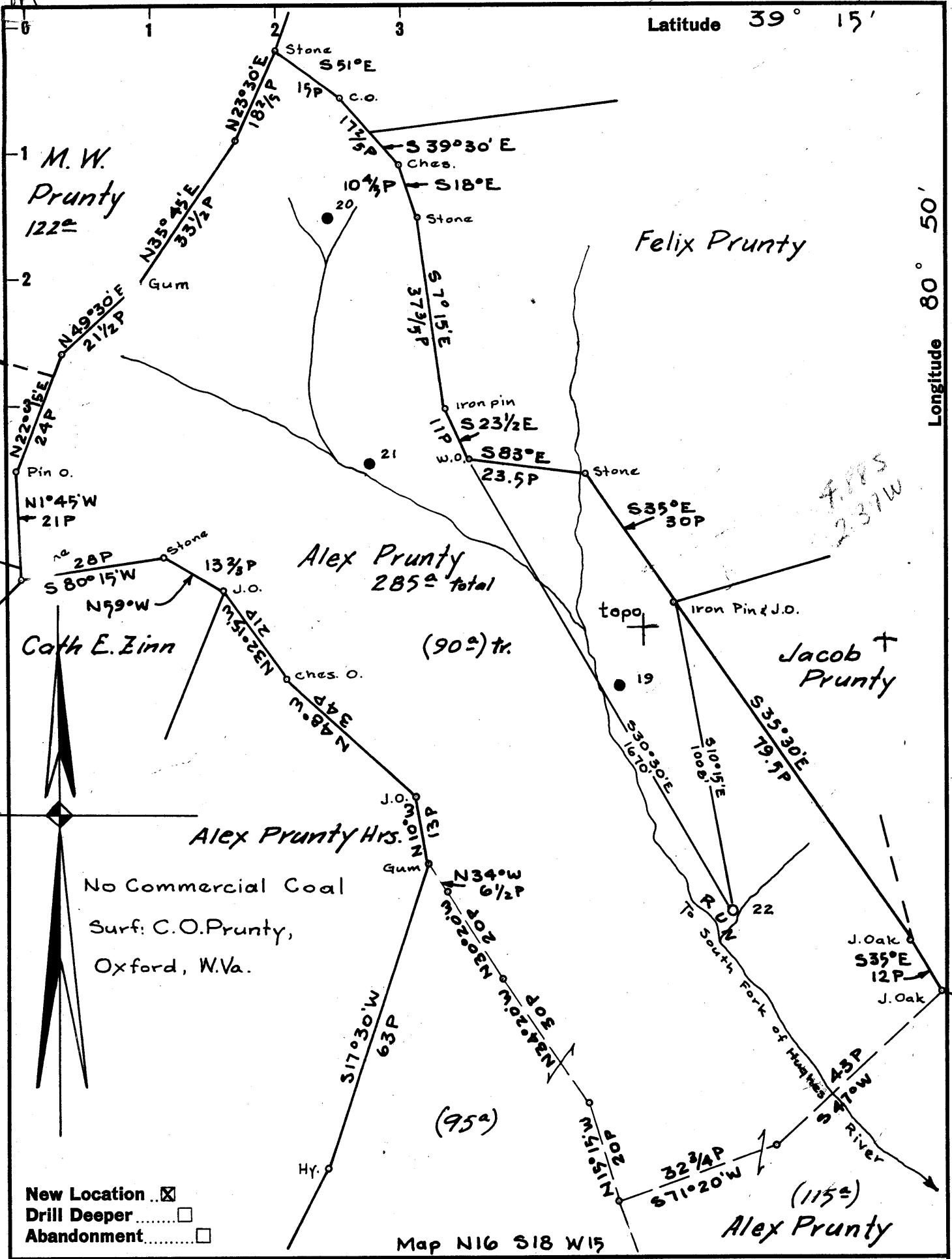


3912 30

P
02 25 08
80 52 30



- New Location
- Drill Deeper
- Abandonment

Map N16 S18 W15

Company SOUTH PENN OIL CO.
 Address PARKERSBURG, W.Va.
 Farm ALEX PRUNTY
 Tract 90[±] Acres 285[±] Lease No. 81157
 Well (Farm) No. 22 Serial No. _____
 Elevation (Spirit Level) 824.28' ground
 Quadrangle HOLBROOK NC
 County RITCHIE District UNION
 Engineer A.C. Hillbert
 Engineer's Registration No. 2534
 File No. 1272 Drawing No. _____
 Date March 27, 1961 Scale 1"=400'

STATE OF WEST VIRGINIA
 DEPARTMENT OF MINES
 OIL AND GAS DIVISION
 CHARLESTON

WELL LOCATION MAP
 FILE NO. lit-2346

+ Denotes location of well on United States Topographic Maps, scale 1 to 62,500, latitude and longitude lines being represented by border lines as shown.
 - Denotes one inch spaces on border line of original tracing.



STATE OF WEST VIRGINIA
DEPARTMENT OF MINES
OIL AND GAS DIVISION ¹³

Quadrangle HOLBROOK

Permit No. RIT-2346

WELL RECORD

Oil or Gas Well & G
(KIND)

Oil Gas Well

Company SOUTH PENN OIL COMPANY
Address P. O. Box 1280, Parkersburg, W. Va.
Farm Alex Prunty Acres 285
Location (waters) South Fork of Hughes River
Well No. 22 Elev. 824.28
District Union County Ritchie
The surface of tract is owned in fee by C. O. Prunty
Address Oxford, W. Va.
Mineral rights are owned by James A. Prunty, et al.
Address Houston 35, Texas
Drilling commenced July 21, 1961
Drilling completed August 17, 1961
Date Shot - From - To -
With -
Open Flow /10ths Water in - Inch
/10ths Merc. in - Inch
Volume 17,000 Cu. Ft.
Rock Pressure - lbs. - hrs.
Oil 10 bbls., 1st 24 hrs.
WELL ACIDIZED -

Casing and Tubing	Used in Drilling	Left in Well	Packers
Size			Kind of Packer
16			
13			
10.75	246'	NONE	Size of
8 8.625	1003'	None	
6 5/8			Depth set
5 3/8 5.5	1863'	1863'	
3			Perf. top
2.375	1912'2"	1912'2"	Perf. bottom
Liners Used			Perf. top
			Perf. bottom

CASING CEMENTED 5.5 SIZE 1843 No. Ft. 8/10/61 Date

COAL WAS ENCOUNTERED AT 498 FEET 24 INCHES
FEET INCHES FEET INCHES
FEET INCHES FEET INCHES

WELL FRACTURED 8/24/61 by Dowell

RESULT AFTER TREATMENT Gas - 110,000 Cu. Ft.
Oil - 20 Bbls. per day

ROCK PRESSURE AFTER TREATMENT 350 lbs. - 36 hours

Fresh Water - Feet Salt Water - Feet

Formation	Color	Hard or Soft	Top	Bottom	Oil, Gas or Water	Depth	Remarks
Top Soil			0	4			
Sand			4	38			
White Clay			38	48			
Rock			48	60			
Red Rock			60	75			
Lime			75	80			
Red Rock			80	112			
Grey Mud			112	143			
Red Rock			163	176			
Sand Stone			176	189			
Red Rock			189	210			
Slate			210	233			
Lime			233	238			
Slate			238	262			
Lime			262	275			
Red Rock			275	314			
Slate			314	335			
Lime			335	385			
Sand			385	402			
Lime			402	418			
Slate			418	430			
Red Rock			430	445			
Lime			445	450			
Slate			450	460			
Red Rock			460	480			
Lime			480	495			
Slate			495	498			
Coal			498	500			
Slate			500	514			

Formation	Color	Hard or Soft	Top <i>13</i>	Bottom	Oil, Gas or Water	Depth Found	Remarks
Lime			514	532			
Slate			532	542			
Lime			542	560			
Sand			560	569			
Slate			569	585			
Red Rock			585	616			
Sand			616	625			
Red Rock			625	635			
Lime			635	650			
Slate			650	710			
Lime			710	735			
Slate			735	795			
Lime			795	805			
Sand			805	820			
Red Rock			820	835			
Slate			835	855			
Lime			855	865			
Slate			865	970			
Sand-Dunkard			970	1010			
					Oil - Show	970-985	
Lime			1010	1030			
Slate			1030	1040			
Lime			1040	1070			
Sand			1070	1083			
Slate			1083	1110			
Lime			1110	1120			
Sand			1120	1153			
Slate			1153	1237			
Lime			1237	1250			
Slate-Shell			1250	1272			
Sand			1272	1323			
Slate			1323	1366			
Sand			1366	1371			
Slate			1371	1390			
Sand			1390	1423			
Slate			1423	1451			
Lime			1451	1470			
Sand			1470	1595			
Slate			1595	1608			
Maxton Sand			1608	1669			
					Oil	1613-1629	10 Gal.-30 hrs.
Slate			1669	1712			
Hole Reduced from 8 1/4" to 7" at			1702'				
Little Lime			1712	1755			
Slate			1755	1765			
Big Lime			1765	1838			
Big Injun			1838	1893			
Shale (Break in Big Injun Sand)			1846	1851			
					Oil & Gas	1881-1887	Oil-10 bbls. da. Gas 17 MCF-Rock 255#-36 hrs
Slate			1893	1908			
TOTAL DEPTH				1908			

Date October 16, 1961

APPROVED SOUTH PENN OIL COMPANY, Owner

By George W. Willsman
George W. Willsman (Title) Land Agent