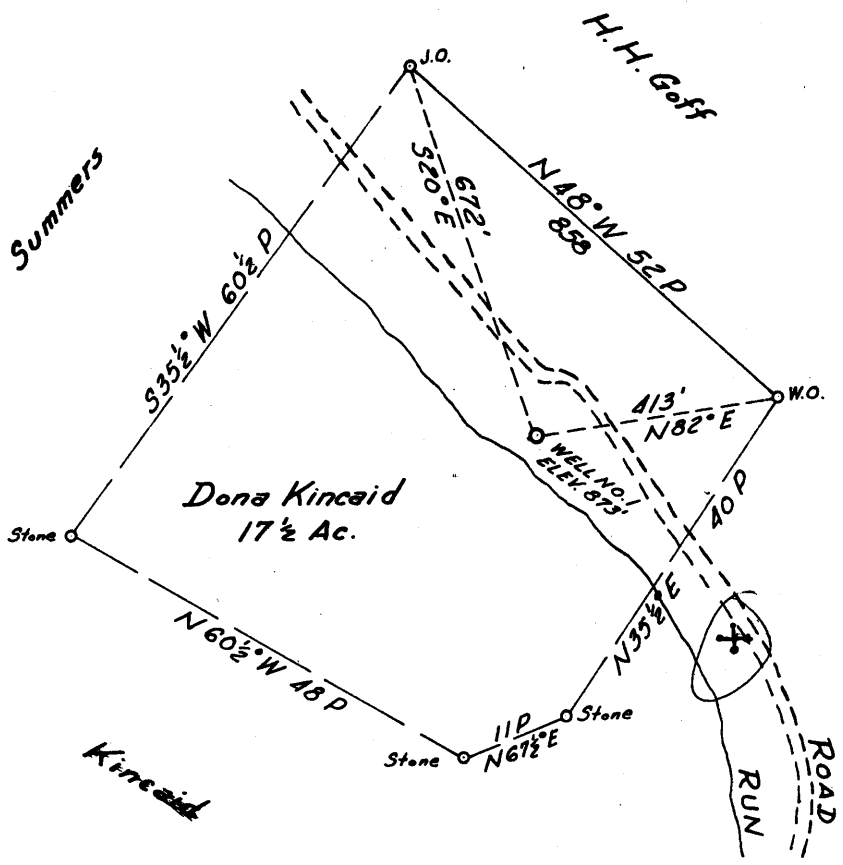


21

Latitude 39° 10'

Longitude 80° 55'



5.265
2.50W

New Location
 Drill Deeper
 Abandonment

Company LAUREL FORK OIL & GAS CO., DURL FLUHA RTY-AGT.
 Address SMITHVILLE, W.VA.
 Farm DONA KINCAID
 Tract 1 Acres 17 1/2 Lease No. _____
 Well (Farm) No. 1 Serial No. _____
 Elevation (Spirit Level) 873'
 Quadrangle HOLBROOK W C
 County RITCHIE District MURPHY
 Engineer Peter C. Peters
 Engineer's Registration No. 485
 File No. _____ Drawing No. _____
 Date MAY 18, 1961 Scale 1"=20P

STATE OF WEST VIRGINIA
 DEPARTMENT OF MINES
 OIL AND GAS DIVISION
 CHARLESTON

WELL LOCATION MAP
 FILE NO. Kit-2283-Revised

+ Denotes location of well on United States Topographic Maps, scale 1 to 62,500, latitude and longitude lines being represented by border lines as shown.

- Denotes one inch spaces on border line of original tracing.

too crowded to plot

6-6-61



STATE OF WEST VIRGINIA
DEPARTMENT OF MINES
OIL AND GAS DIVISION 20

Quadrangle Holbrook

Permit No. RIT-2283-Revised

WELL RECORD

Oil or Gas Well O&G
(KIND)

Company Laurel Fork Oil & Gas Company
Address Parkersburg, West Virginia
Farm Dona Kincaid Acres 17 1/2
Location (waters) Laurel Fork of Spruce
Well No. One Elev. 873'
District Murphy County Ritchie
The surface of tract is owned in fee by _____
Address _____
Mineral rights are owned by Dona Kincaid and F. P. Broadwater
Address Smithville, W. Va.
Drilling commenced April 7, 1961
Drilling completed May 14, 1961
Date Shot _____ From _____ To _____
With _____
Open Flow _____ /10ths Water in _____ Inch
_____ /10ths Merc. in _____ Inch
Volume Guessed about 50,000 Cu. Ft.
Rock Pressure ? lbs. _____ hrs.
Oil Rainbow bbls., 1st 24 hrs.
WELL ACIDIZED _____

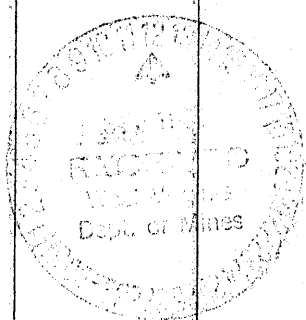
Casing and Tubing	Used in Drilling	Left in Well	Packers
Size			Kind of Packer
16	9'		
13			
10	80'	80'	Size of
8 3/4	430'	430'	
6 5/8	1014'	1014'	Depth set
5 3/16	2253'	2253'	
3			Perf. top
2			Perf. bottom
Liners Used			Perf. top
			Perf. bottom

CASING CEMENTED 5 1/2" SIZE 2253 No. Ft. 5-15-61 Date
60 Sks. - cement, 10 Sks. Acragel, Halliburton
COAL WAS ENCOUNTERED AT _____ FEET _____ INCHES
_____ FEET _____ INCHES FEET _____ INCHES
_____ FEET _____ INCHES FEET _____ INCHES

WELL FRACTURED May 23, 1961

RESULT AFTER TREATMENT Settled down to about 25 bbls. oil per day. *Gas Well* Cannot measure
ROCK PRESSURE AFTER TREATMENT 575 lbs. 2 1/2 Hours gas because of oil flow. ?
Fresh Water None Feet _____ Salt Water None Feet _____

Formation	Color	Hard or Soft	Top	Bottom	Oil, Gas or Water	Depth	Remarks
Soil			0	5			
Gravel			5	8			
Slate			8	12			
Lime			12	18			
Slate			18	90			
Sand			90	118			
Gray Slate			118	160			
Red Rock			160	250			
Gray Slate			250	305			
Red Rock			305	430			
Gray Slate			430	470			
Red Rock			470	485			
Gray Slate			485	515			
Red Rock			515	540			
Gray Slate			540	565			
Red Rock			565	640			
Gray Slate			640	735			
Red Rock			735	850			
Slate			850	960			
Pink Rock			960	965			
Gray Slate			965	990			
Sand			990	1100			
Gray Slate			1100	1175			
Slate			1175	1185			
Lime and Sand			1185	1244			
Gray Slate			1244	1285			
Sand			1285	1355			
Lime			1355	1480			
Sand			1480	1505			
Slate			1505	1523			



Formation	Color	Hard or Soft	Top 20	Bottom	Oil, Gas or Water	Depth Found	Remarks
Sand			1523	1570	Gas	1480	
Slate			1570	1590			
Sand			1590	1635			
Slate			1635	1695			
Sand			1695	1700			
Lime			1700	1715			
Sand			1715	1720	Gas	1715	
Lime			1720	1789	Gas	1789	
Big Injun Snad			1789	1869			
Slate			1869	2000			
Sand			2000	2015			
Lime and Slate			2015	2081			
Gritty Lime			2081	2122			
Sand			2122	2158			
Slate			2158	2220			
Berea Grit			2220	2225			
Slate			2225	2253	Total Depth		

Date September 9, 1961

APPROVED Laurel Fork Oil & Gas Company Owner

By H. L. J. Partner

(Title)