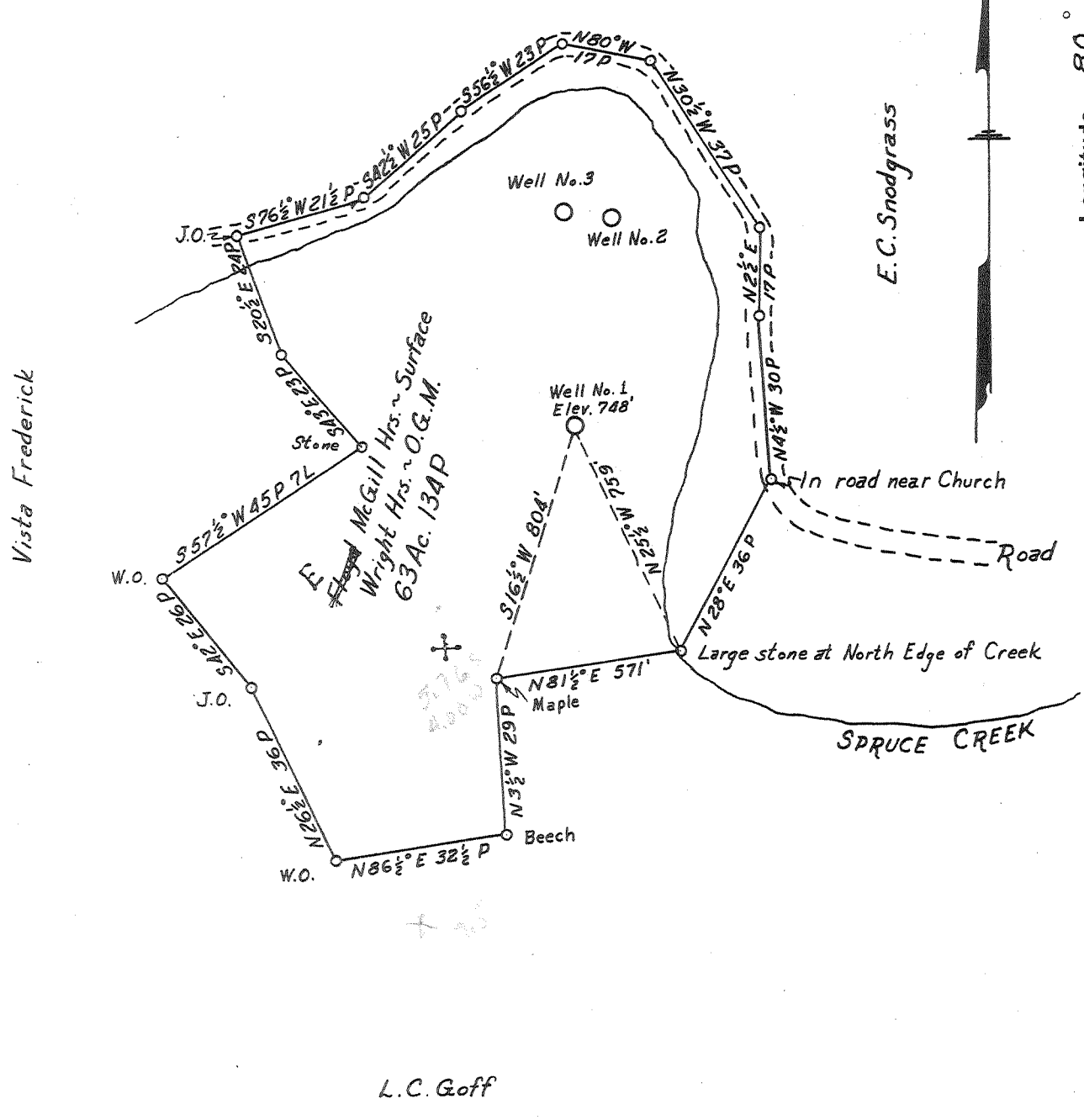


Latitude 39° 10'

Longitude 80° 55'



L.C. Goff

- New Location
- Drill Deeper
- Abandonment

Company RICHARD McCULLOUGH & LEO JOHNSON
 Address Box 469, SPENCER, W.VA.
 Farm McGill Hrs.
 Tract 1 Acres 64 Lease No. _____
 Well (Farm) No. 1 Serial No. _____
 Elevation (Spirit Level) 748'
 Quadrangle HOLBROOK WC Pullman
 County RITCHIE District MURPHY
 Engineer Parker E. Peters
Field - W.P. Ireland
 Engineer's Registration No. 485
 File No. _____ Drawing No. _____
 Date SEPT. 3, 1960 Scale 1" = 30 P

STATE OF WEST VIRGINIA
 DEPARTMENT OF MINES
 OIL AND GAS DIVISION
 CHARLESTON

WELL LOCATION MAP
 FILE NO. Rit-2254

- + Denotes location of well on United States Topographic Maps, scale 1 to 62,500, latitude and longitude lines being represented by border lines as shown.
- Denotes one inch spaces on border line of original tracing.

Too Crowded To Plot