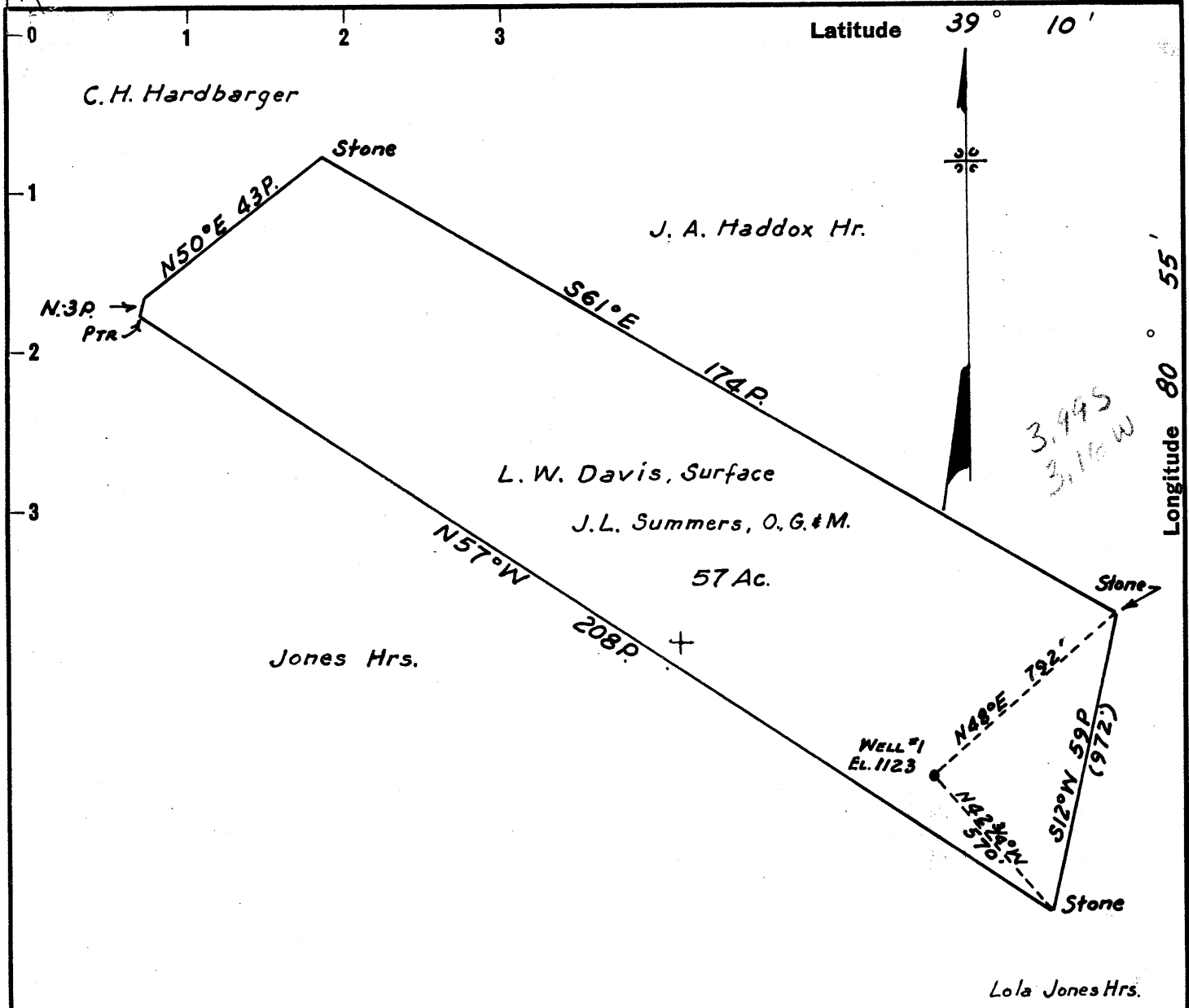


P



3.995  
3.16W

New Location   
 Drill Deeper   
 Abandonment

Company Vesta Fuel Co., Walter C. Crane, Agt.  
 Address 215 South Court St. Harrisville, W. Va.  
 Farm L. W. Davis  
 Tract 1 Acres 57 Lease No. \_\_\_\_\_  
 Well (Farm) No. 1 Serial No. 9  
 Elevation (Spirit Level) 1123  
 Quadrangle Holbrook - SWC  
 County Ritchie District Union  
 Engineer L. G. Merrill, Reg. G. E.  
 Engineer's Registration No. 152  
 File No. \_\_\_\_\_ Drawing No. \_\_\_\_\_  
 Date June 26, 1959 Scale 1" = 30P.

STATE OF WEST VIRGINIA  
 DEPARTMENT OF MINES  
 OIL AND GAS DIVISION  
 CHARLESTON

WELL LOCATION MAP  
 FILE NO. Rit-2073

+ Denotes location of well on United States Topographic Maps, scale 1 to 62,500, latitude and longitude lines being represented by border lines as shown.

- Denotes one inch spaces on border line of original tracing.

6-6 128 R59



STATE OF WEST VIRGINIA  
DEPARTMENT OF MINES  
OIL AND GAS DIVISION

Quadrangle Holtbrook

WELL RECORD

Permit No. RIT-2073

Oil or Gas Well Gas  
(KIND)

Company Vesta Fuel Company  
Address 215 S. Court St., Harrisville, W. Va.  
Farm J. L. & Esther Summers Acres 57  
Location (waters) Hughes River & Gains Run  
Well No. 1 Elev. 1123'  
District Union County Ritchie  
The surface of tract is owned in fee by L. W. Davis  
Address Washburn, W. Va.  
Mineral rights are owned by J. L. Summers  
Address Parkersburg, W. Va.  
Drilling commenced 7/20/59  
Drilling completed 8/12/59  
Date Shot \_\_\_\_\_ From \_\_\_\_\_ To \_\_\_\_\_  
With \_\_\_\_\_  
Open Flow /10ths Water in \_\_\_\_\_ Inch  
/10ths Merc. in \_\_\_\_\_ Inch  
Volume \_\_\_\_\_ Cu. Ft.  
Rock Pressure \_\_\_\_\_ lbs. \_\_\_\_\_ hrs.  
Oil \_\_\_\_\_ bbls., 1st 24 hrs.  
WELL ACIDIZED \_\_\_\_\_

Casing and Tubing	Used in Drilling	Left in Well	Packers
Size			Kind of Packer
16			
13			
10			Size of
8 1/4			
6 3/4			Depth set
5 3/16			
4 1/2		2158'	Perf. top
2			Perf. bottom
Liners Used			Perf. top
			Perf. bottom

CASING CEMENTED 4 1/2" SIZE 300' No. Ft. \_\_\_\_\_ Date \_\_\_\_\_

COAL WAS ENCOUNTERED AT \_\_\_\_\_ FEET \_\_\_\_\_ INCHES  
\_\_\_\_\_ FEET \_\_\_\_\_ INCHES FEET \_\_\_\_\_ INCHES  
\_\_\_\_\_ FEET \_\_\_\_\_ INCHES FEET \_\_\_\_\_ INCHES

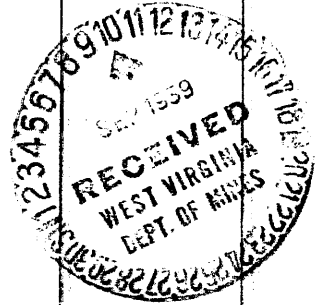
WELL FRACTURED Well was fractured with 250 barrell of water, 1,000 gallon of acid, 26,000 pound of sand.

RESULT AFTER TREATMENT 2 million

ROCK PRESSURE AFTER TREATMENT 485 pound

Fresh Water \_\_\_\_\_ Feet Salt Water \_\_\_\_\_ Feet

Formation	Color	Hard or Soft	Top	Bottom	Oil, Gas or Water	Depth	Remarks
Sand			0	37			
Red Rock			37	75			
Sand			75	110			
Red Rock			110	145			
Slate			145	270			
Red Rock			270	365			
Sand			365	402			
Slate & Shells			402	430			
Red Rock			430	513			
Slate			513	569			
Red Rock			569	700			
Slate			700	725			
Red Rock			725	765			
Slate & Shells			765	800			
Red Rock			800	895			
Sand			895	912			
Red Rock			912	960			
Lime			960	980			
S. Slate			980	1012			
Red Rock			1012	1065			
Black Slate			1065	1180			
Pink Rock			1180	1190			
Slate & Shells			1190	1258			
Sand			1258	1342			
Slate			1342	1375			
Sand			1375	1445			
Slate			1445	1448			
Sand			1448	1528			
Black Slate			1528	1557			



750  
42  
1500  
20000  
21500

(over)

F59

Formation	Color	Hard or Soft	Top <i>8</i>	Bottom	Oil, Gas or Water	Depth Found	Remarks
Sand			1557	1584			
Slate			1584	1745			
Sand			1745	1815			
Slate & Shells			1815	1831			
Line Sandy			1831	1851			
Small brake shale			1851	1852			
Sand			1852	1885			
Black Slate			1885	1924			
Little Lime			1924	1945			
Slate			1945	1951			
Big Lime			1951	2015			
Big Injun Sand			2015	2078			
Squaw Sand			2098	2111			
Slate Shells			2111				
		1515 to	1522	Gas			
		1557 to	1584	Water			
		1852 to	1885	Gas			
		2053 to	2065	Gas			
		2071 to	2075	Smell Oil			
		2077 to	2088	Gas			
		2088 to	2098	Gas increase	✓		
		2105 to	2111	Gas			

Date Sept. 8, 1959

APPROVED Vesta Fuel Company, Owner

By [Signature] (Title) Agent