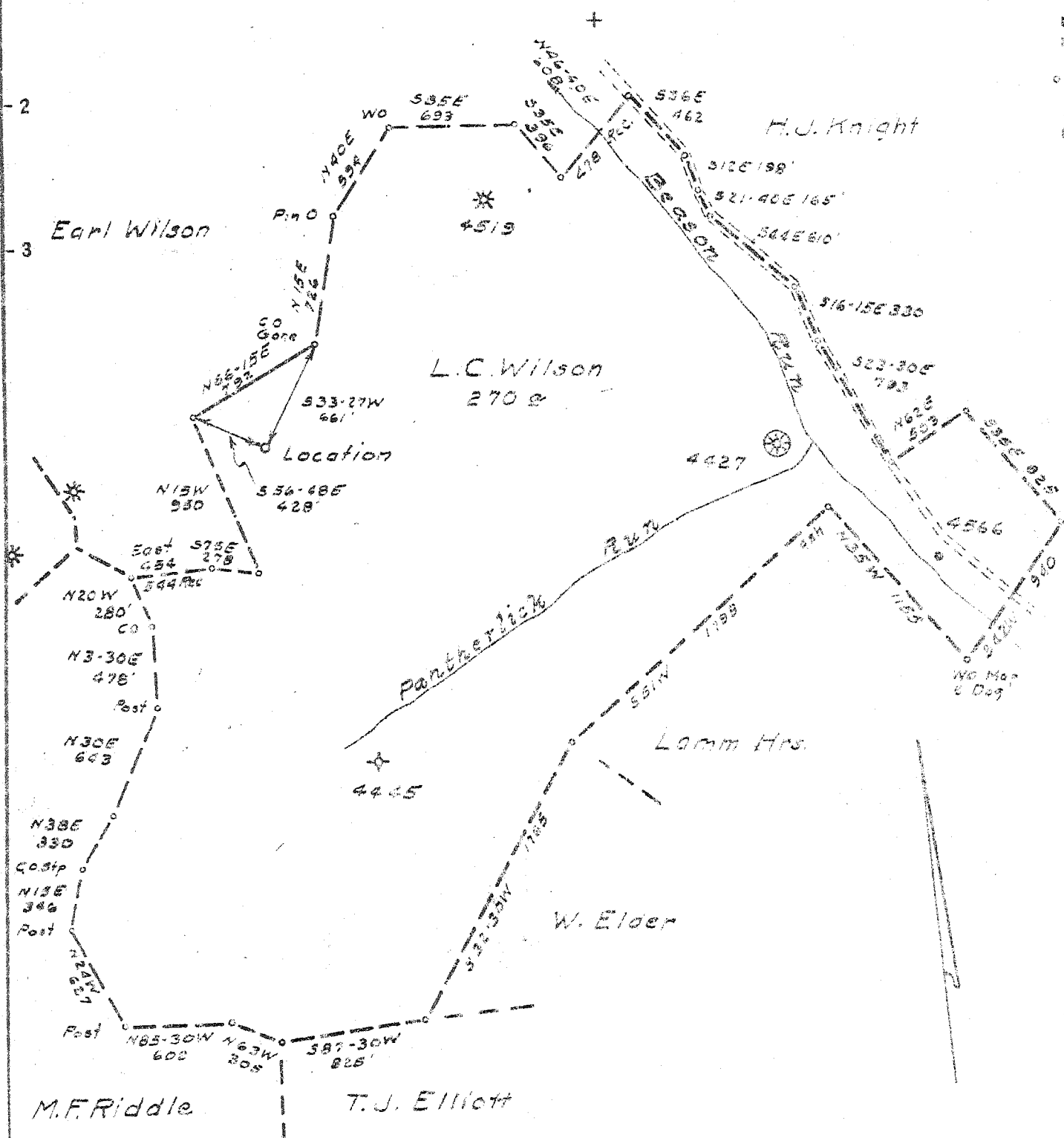


1.575
3.39W



- New Location
- Drill Deeper
- Abandonment

Company C.W. & J.E. Richards & E.C. Hartman
 Address Cairo, W.Va.
 Farm L.C. Wilson
 Tract _____ Acres 270 Lease No. (15417)
 Well (Farm) No. 1 Serial No. _____
 Elevation (Spirit Level) 1012' M.A.
 Quadrangle Helbrook (N.W.)
 County Pitchie District Clay
 Engineer James P. Griffin
 Engineer's Registration No. 1024
 File No. 175/15 Drawing No. _____
 Date 7-8-52 Scale 1" = 800'

STATE OF WEST VIRGINIA
 DEPARTMENT OF MINES
 OIL AND GAS DIVISION
 CHARLESTON

WELL LOCATION MAP
 FILE NO. RIT-1434

- + Denotes location of well on United States Topographic Maps, scale 1 to 62,500, latitude and longitude lines being represented by border lines as shown.
- Denotes one inch spaces on border line of original tracing.

DEPARTMENT OF MINES
OIL AND GAS DIVISION

WELL RECORD

Halbrosch
Well No. *RIT 1424*

Oil or Gas Well *Gas*
(Kind)

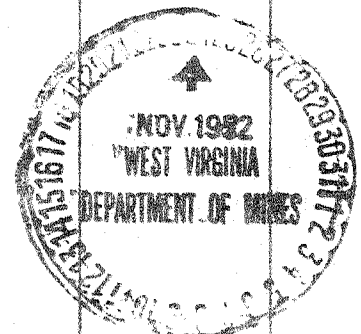
Company *R.S.H. Oil & Gas Co.*
Address *Cairo, W.Va.*
Farm *L.C. Wilson* Acres *2.90*
Location (waters) *Benson Run*
Well No. *1* Elev. *1012*
District *Clay* County *Ritchie*
The surface of tract is owned in fee by *Burl Dadd*
Benson W.Va. Address
Mineral rights are owned by *L.C. Wilson He & Burl Dadd*
Benson W.Va. Address
Drilling commenced *July 14 1952*
Drilling completed *August 8 1952*
Date shot _____ Depth of shot _____
Open Flow *7/10ths* Water in _____ Inch
_____ /10ths Merc. in _____ Inch
Volume *126 M* Cu. Ft.
Rock Pressure *200* lbs. hrs.
Oil _____ bbls., 1st 24 hrs.
Fresh water _____ feet
Salt water _____ feet

Casing and Tubing	Used in Drilling	Left in Well	Packers	
Size			Kind of Packers	
16			Number	
18			Size of <i>5 1/2 x 7</i>	
10			Depth set	
8 1/2	<i>428</i>			
5 1/2	<i>1103</i>	<i>1837</i>	Perf. top <i>1650</i>	
	<i>1648 1/2 + 192 = 1840 1/2</i>		Perf. bottom <i>1650</i>	
Liners Used			Perf. top	
			Perf. bottom	
CASING CEMENTED	SIZE	No. Ft.	Date	
COAL WAS ENCOUNTERED AT	FEET	INCHES	FEET	INCHES
	FEET	INCHES	FEET	INCHES
	FEET	INCHES	FEET	INCHES

Formation	Color	Hard or Soft	Top	Bottom	Oil, Gas or Water	Depth Found	Remarks
<i>Hard Salt Sand</i>			<i>1630</i>	<i>1668</i>			
<i>" "</i>			<i>1449</i>	<i>1668</i>	<i>Gas</i>	<i>1642-1668</i>	
<i>Slate</i>	<i>Black</i>		<i>1668</i>	<i>1750</i>			
<i>Sand</i>			<i>1750</i>	<i>1760</i>			
<i>Shale</i>			<i>1760</i>	<i>1810</i>			
<i>Lime</i>	<i>Black</i>		<i>1810</i>	<i>1820</i>			
<i>Slate</i>	<i>"</i>		<i>1820</i>	<i>1823</i>			
<i>Lime</i>			<i>1823</i>	<i>1830</i>			
<i>Big lime</i>	<i>Black</i>		<i>1830</i>	<i>1888</i>			
<i>Lime</i>					<i>Gas</i>	<i>1842-1844</i>	
<i>Keener</i>			<i>1888</i>	<i>1918</i>	<i>bubble gas</i>	<i>1910</i>	
<i>Lime</i>			<i>1918</i>	<i>1985</i>			
<i>Slate</i>			<i>1985</i>	<i>2013</i>			

Please read from the top of the page
Thank you

Oil No. 1092



JAN 19 1953