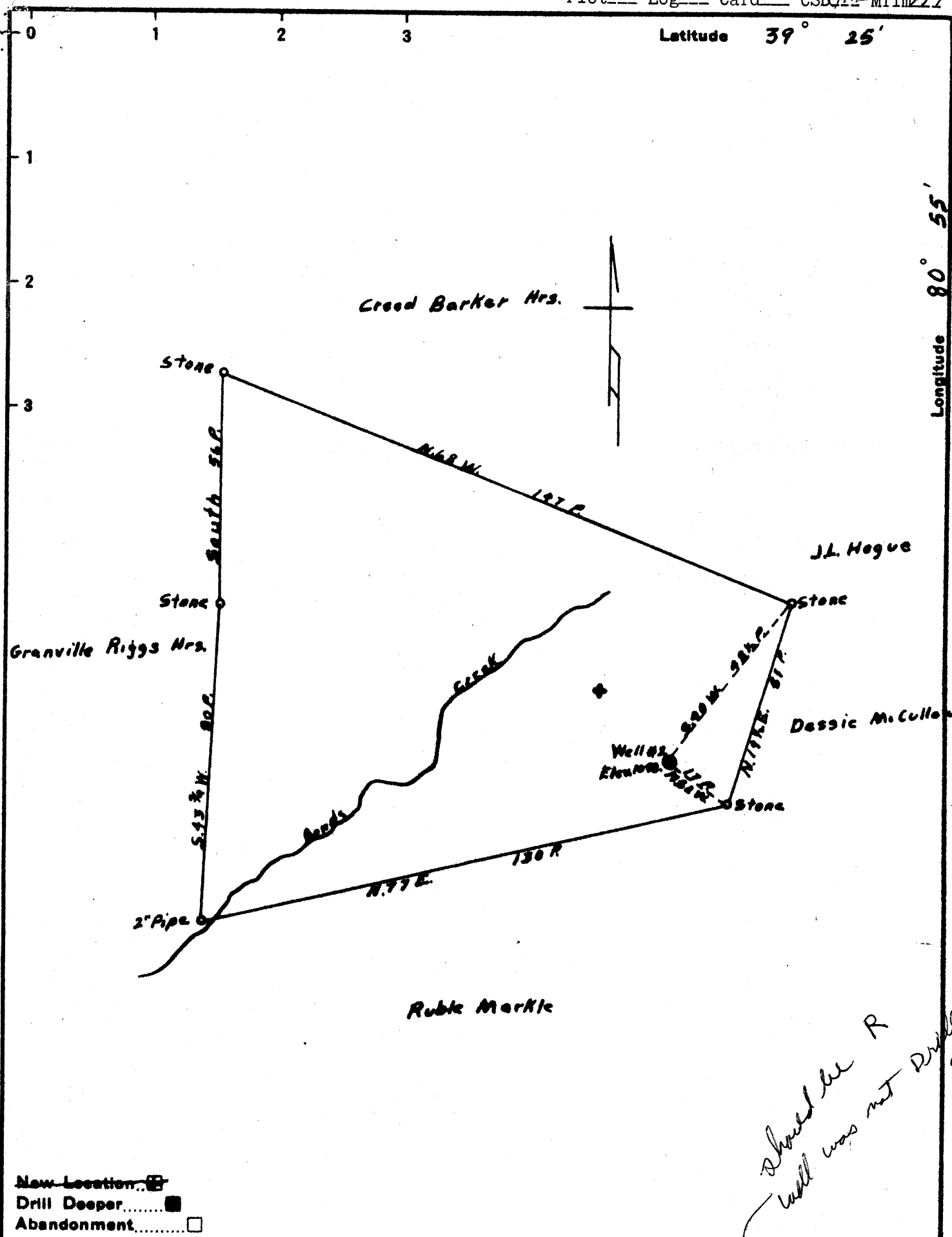


Latitude 39° 25'

Longitude 80° 55'



*Should be R  
well was not drilled deeper*

- New Location
- Drill Deeper
- Abandonment

Company Carl O. Perkins  
Geo. F. Mackenzie  
P. S. Fornberg, W. W. V.  
Richwood, W. Va.

Address \_\_\_\_\_

Farm Moab Farlay Hrs.

Tract \_\_\_\_\_ Acres 45 1/2 Lease No. \_\_\_\_\_

Well (Farm) No. Two Serial No. \_\_\_\_\_

Elevation (Spirit Level) 1098

Quadrangle West Union WC

County Ritchie District Clay

Engineer D. H. Wentzell Deputy E. Burdette

Engineer's Registration No. \_\_\_\_\_

File No. \_\_\_\_\_ Drawing No. \_\_\_\_\_

Date Feb 15 1939 Scale 1" = 30' approx

STATE OF WEST VIRGINIA  
 DEPARTMENT OF MINES  
 OIL AND GAS DIVISION  
 CHARLESTON

**WELL LOCATION MAP**  
 FILE NO. Pit - 710-D.D.

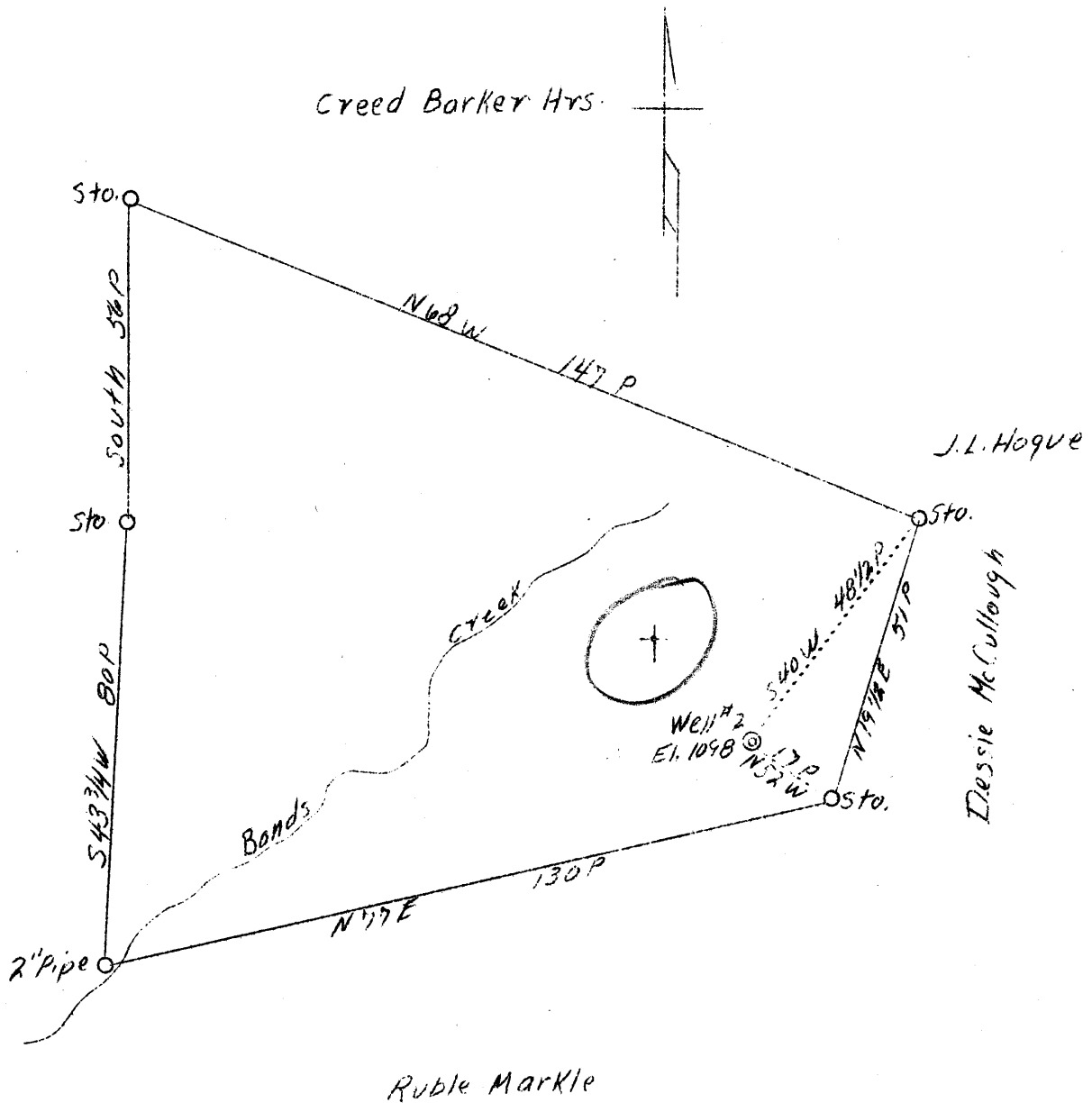
→ Denotes location of well on United States Topographic Maps, scale 1 to 62,500, latitude and longitude lines being represented by border lines as shown.

— Denotes one inch spaces on border line of original tracing.

6-6-0

LATITUDE 39° 25'

LONGITUDE 80° 55'



2.77 W  
5.4 S

New location

Company	Glen F. McBurney
Address	Pittsburgh, Pa.
Farm	Noah Farley Hrs.
Acres	45-1/2
Well (Farm) No.	Two
Elevation (SL)	1098
Quadrangle	West Union
County	Ritchie
District	Clay
Engineer	A.K. Westfall Deputy County Surveyor
Eng. Reg. No.	-
Date	Feb. 15, 1939
Scale	1" - 30 poles

STATE OF WEST VIRGINIA  
 Department of Mines  
 OIL & GAS DIVISION  
 Charleston

WELL LOCATION MAP

File No. Rit-710

x Denotes location of well on U. S. Topographic Maps, scale 1 to 62,500, latitude and longitude lines being represented by border lines as shown.

- Denotes one inch spaces on border line of original tracing.



STATE OF WEST VIRGINIA  
DEPARTMENT OF MINES  
OIL AND GAS DIVISION

Rotary   
Spudder   
Cable Tools   
Storage

WELL RECORD

Oil or Gas Well Gas  
(KIND)

Quadrangle \_\_\_\_\_  
Permit No. RIT-710-~~DD~~ REDRILL

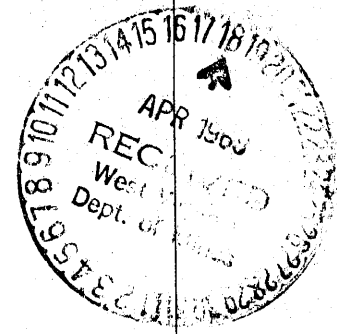
Company Carl D. Perkins  
Address Rt. 3 Pennsboro W. Va. 26415  
Farm Noah Farley Heirs Acres 1.90  
Location (waters) Bonds Creek  
Well No. 2 Elev. 1028'  
District Clay County Ritchie  
The surface of tract is owned in fee by Farley Heirs  
Address \_\_\_\_\_  
Mineral rights are owned by Farley  
Address \_\_\_\_\_  
Drilling commenced April 7 5, 68  
Drilling completed April 6, 68  
Date Shot \_\_\_\_\_ From \_\_\_\_\_ To \_\_\_\_\_  
With \_\_\_\_\_  
Open Flow \_\_\_\_\_ /10ths Water in \_\_\_\_\_ Inch  
\_\_\_\_\_ /10ths Merc. in \_\_\_\_\_ Inch  
Volume \_\_\_\_\_ Cu. Ft.  
Rock Pressure 130 lbs. 24 hrs.  
Oil \_\_\_\_\_ bbls., 1st 24 hrs.  
WELL ACIDIZED \_\_\_\_\_  
WELL FRACTURED \_\_\_\_\_

Casing and Tubing	Used in Drilling	Left in Well	Packers
Size			Kind of Packer
16			
13			
10			Size of
8 1/4			
6 5/8			Depth set
5 3/16	1789'	1789'	
3			Perf. top <u>1996</u>
2	1996'	1996'	Perf. bottom <u>1994</u>
Liners Used			Perf. top _____
			Perf. bottom _____

CASING CEMENTED \_\_\_\_\_ SIZE \_\_\_\_\_ No. Ft. \_\_\_\_\_ Date \_\_\_\_\_  
COAL WAS ENCOUNTERED AT \_\_\_\_\_ FEET \_\_\_\_\_ INCHES  
\_\_\_\_\_ FEET \_\_\_\_\_ INCHES \_\_\_\_\_ FEET \_\_\_\_\_ INCHES  
\_\_\_\_\_ FEET \_\_\_\_\_ INCHES \_\_\_\_\_ FEET \_\_\_\_\_ INCHES

RESULT AFTER TREATMENT 35 MCF  
ROCK PRESSURE AFTER TREATMENT 35,000  
Fresh Water \_\_\_\_\_ Feet Salt Water Big Injun Feet

Formation	Color	Hard or Soft	Top	Bottom	Oil, Gas or Water	Depth	Remarks
Injun	White	Hard	New hole	1988			
Slate	Black	Soft	1988	2010			
	<u>Big Injun</u>		Total	2010			
Well was dround out by by water. Had to run a string of tubing on packer shutting off the lock in 5" casing. Well has started to recover from the water.							
				<u>2010</u> <u>1980</u> <u>30</u>			



WEST VIRGINIA DEPARTMENT OF MINES  
OIL & GAS DIVISION  
WELL RECORD

Permit No. Rit-710  
West Union Quad.

Gas Well  
CASING & LOGGING

Company	Glean P. McBurney	16	15 Wood Cond.
Address	1201 Berkshire Ave., Pch. Pa.	10	210
Farm	Noah Darloy ACRE 192	3-1/4	1175
Location	Hughes River	6-5/8	1375
Well No.	1 (#2 on Farm) ELEV. 1110	5-3/16	2029
District	Clay - Ritchie County		
Surface	Noah Darloy, Pennington, W. Va.		
Mineral	Ruth A. McBurney		
Address	1201 Berkshire Ave., Pch. Pa.		
Commenced	March 1, 1939		
Completed	Apr. 7, 1939		
Open Flow	-		
Volume	520,000 c.f.		
Rock Pressure	190 lbs. 12 hours		
Water	-		

L. Dunkard	Gr.	h	990	1025	
B. Dunkard	gr	h	1210	1235	
1st Salt	gr	h	1350	1500	
2nd Salt	gr	h	1580	1692	
3rd Salt	brn	h	1755	1856	56 Bbl. water
Maxon	brn	h	1890	1940	
L. Lime	brn	h	1956	1970	
B. Lime	brn	h	1982	2050	
B. Injun	wh	h	2050	2202	

Bottom Hole 2206

Gas 2150 to 2154  
Gas 2157 to 2161  
Gas 2168 to 2172