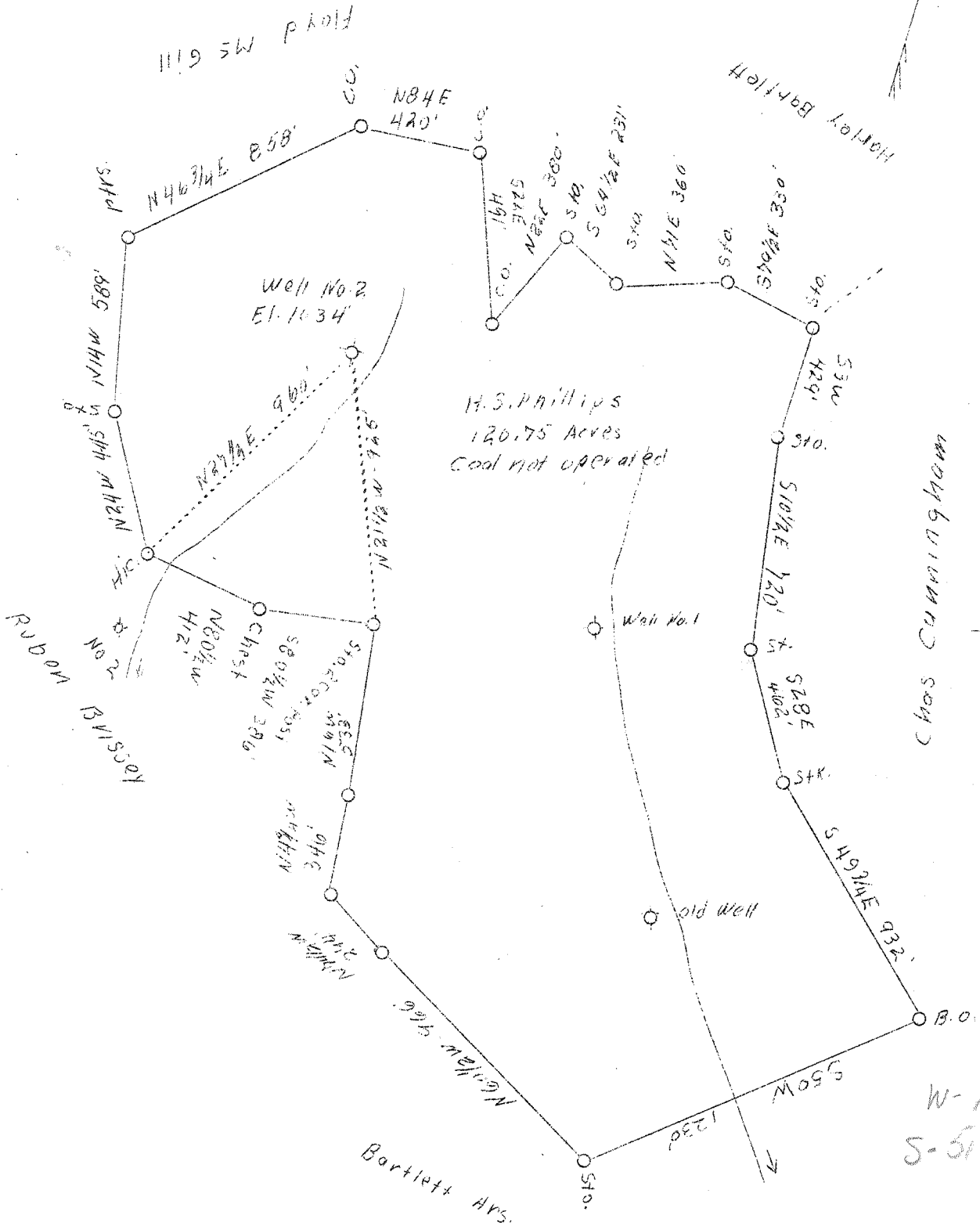


LATITUDE 39° 10'

LONGITUDE 80° 55'



W-152
S-5173

NEW LOCATION

Company	Mud Lick Oil & Gas Co.
Address	612 Keystone Bldg., Pittsburgh, Pa.
Acres	120.75 - 3 tracts
Well (Farm) No.	Two
Serial No.	2-94
Elevation (SP)	1034
Quadrangle	Holbrook W.C.
County	Ritchie
District	Munby <u>UNION</u>
Engineer	C. O. Gerwig
Eng. Reg. No.	811
Date	Oct. 4, 1938
Scale	1" - 500'

STATE OF WEST VIRGINIA
Department of Mines
OIL & GAS DIVISION
Charleston

WELL LOCATION MAP

File No. R12-676

x Denotes location of well on U. S. Topographic Maps, scale 1 to 62,500, latitude and longitude lines being represented by border lines as shown.
- Denotes one inch spaces on border line of original tracing.

