



RECEIVED
Office of Oil & Gas

AUG 14 2012

West Virginia Department of Environmental Protection

Office of Oil and Gas

West Virginia Department of Environmental Protection

83-01251P

WELL LOCATION FORM: GPS

API: ~~47-083-0121~~ 1251P WELL NO.: Upper Pond 1V

FARM NAME: Ruthbell Lumber Company

RESPONSIBLE PARTY NAME: Novus Operating, LLC

COUNTY: Randolph DISTRICT: Beverly

QUADRANGLE: Bowden 7.5'

SURFACE OWNER: Ruthbell Lumber Company

ROYALTY OWNER: E&K Properties,

UTM GPS NORTHING: 4,303,800

UTM GPS EASTING: 609,086 GPS ELEVATION: 3,740'

The Responsible Party named above has chosen to submit GPS coordinates in lieu of preparing a new well location plat for a plugging permit or assigned API number on the above well. The Office of Oil and Gas will not accept GPS coordinates that do not meet the following requirements:

- Datum: NAD 1983, Zone: 17 North, Coordinate Units: meters, Altitude: height above mean sea level (MSL) – meters.
- Accuracy to Datum – 3.05 meters
- Data Collection Method:

Survey grade GPS : Post Processed Differential

Real-Time Differential

Mapping Grade GPS : Post Processed Differential

Real-Time Differential

- Letter size copy of the topography map showing the well location.

I the undersigned, hereby certify this data is correct to the best of my knowledge and belief and shows all the information required by law and the regulations issued and prescribed by the Office of Oil and Gas.

Signature

President
Title

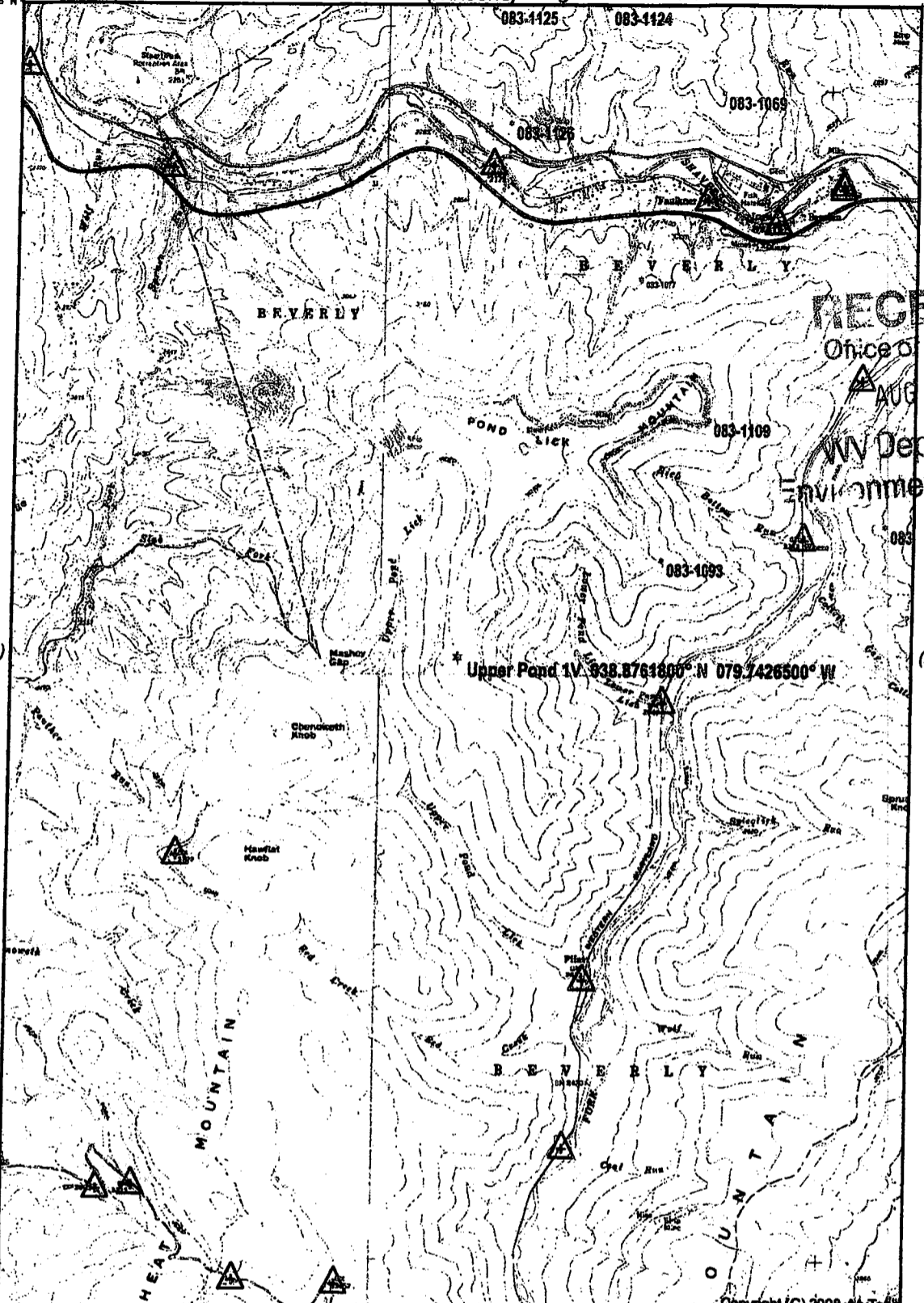
August 8, 2012
Date

078° 47' 03.26" W
038° 55' 22.18" N

(PARSONS)

83-01251P

078° 41' 59.98" W
038° 55' 22.18" N



RECEIVED
Office of Oil & Gas
AUG 14 2012
WV Department of
Environmental Protection

(ELKINS)

(HARMAN)

Upper Pond 1V 938.8761800° N 079.7426500° W

038° 49' 47.04" N
079° 47' 03.88" W

Copyright (C) 2008 MyTopo
Printed: Thu Aug 02, 2012

038° 49' 47.04" N
079° 41' 59.98" W

(BEVERLY EAST)

(GLADY)

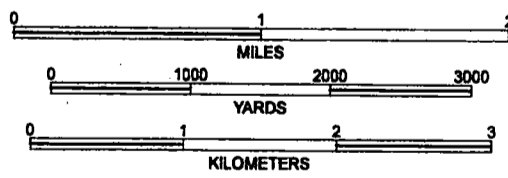
SCALE 1:48000

(WHITMER)

Produced by MyTopo Terrain Navigator
Topography based on USGS 1:24,000
Maps

North American 1983 Datum (NAD83)
Polyconic Projection

To place on the predicted North American
1927 move the projection lines 12M N and
19M E



CONTOUR INTERVAL 40 FEET
NATIONAL GEODETIC VERTICAL DATUM 1929

BOWDEN, WV
1968