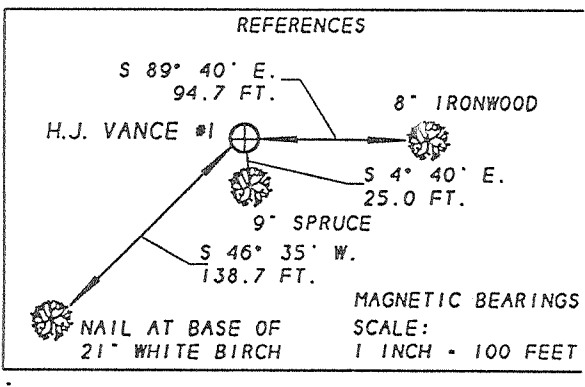


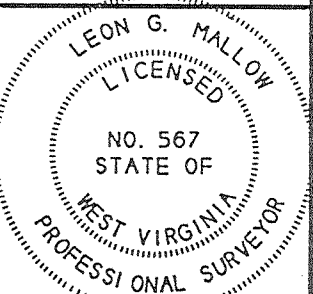
NOTE:  
 THE VANCE WELL IS LOCATED  
 IN EXCESS OF 400 FEET FROM  
 THE NEAREST UNIT BOUNDARY  
 WITH THE TORY MT. RESORT LEASE.

TOPO LOCATION -  
 5,960 FT. WEST  
 6,220 FT. SOUTH



FILE NO. \_\_\_\_\_  
 DRAWING NO. ARD-VANCE-UNIT  
 SCALE 1 INCH - 1000 FEET  
 MINIMUM DEGREE OF  
 ACCURACY 1 IN 200  
 PROVEN SOURCE OF  
 ELEVATION INTERS US RT 33  
 WITH RT 33/3. ELEV - 2419

I THE UNDERSIGNED, HEREBY CERTIFY  
 THAT THIS PLAT IS CORRECT TO THE BEST OF  
 MY KNOWLEDGE AND BELIEF AND SHOWS ALL  
 THE INFORMATION REQUIRED BY LAW AND THE  
 REGULATIONS ISSUED AND PRESCRIBED BY THE  
 DIVISION OF ENVIRONMENTAL PROTECTION,  
 OFFICE OF OIL AND GAS  
 (SIGNED) Leon G. Mallow  
 R.P.E. \_\_\_\_\_ P.S. 567



STATE OF WEST VIRGINIA  
 DIVISION OF ENVIRONMENTAL PROTECTION  
 OFFICE OF OIL AND GAS



DATE JANUARY 6 19 99  
 OPERATOR'S WELL NO. H.J. VANCE  
 API WELL NO. UNIT NO. 1  
47 083 - 01157  
 STATE COUNTY PERMIT

WELL TYPE: OIL \_\_\_ GAS X LIQUID INJECTION \_\_\_ WASTE DISPOSAL \_\_\_  
 (IF "GAS", PRODUCTION \_\_\_ STORAGE \_\_\_ DEEP X SHALLOW \_\_\_)  
 LOCATION: ELEVATION 3825 WATER SHED HORSECAMP RUN OF THE DRY FORK  
 DISTRICT DRY FORK COUNTY RANDOLPH  
 QUADRANGLE HARMAN 7.5'  
 SURFACE OWNER HARVEY J. VANCE ACREAGE 180  
 OIL & GAS ROYALTY OWNER HARVEY J. VANCE LEASE ACREAGE 180  
 LEASE NO. 4063  
 PROPOSED WORK: DRILL X CONVERT \_\_\_ DRILL DEEPER \_\_\_ REDRILL \_\_\_ FRACTURE OR  
 STIMULATE \_\_\_ PLUG OFF OLD FORMATION \_\_\_ PERFORATE NEW  
 FORMATION \_\_\_ OTHER PHYSICAL CHANGE IN WELL (SPECIFY) \_\_\_\_\_  
 PLUG AND ABANDON \_\_\_ CLEAN OUT AND REPLUG \_\_\_  
 TARGET FORMATION ORISKANY S.S. ESTIMATED DEPTH 9200  
 WELL OPERATOR ARDENT RESOURCES, INC. DESIGNATED AGENT R. EDWARD HART  
 ADDRESS 35 HIGHLAND RD., SUITE 3108 ADDRESS 1120 KANAWHA BLVD. EAST  
BETHEL PARK, PA 15102 CHARLESTON, WV 25301

COUNTY NAME RANDOLPH  
 PERMIT 1157

DEEP well

6-6 374

JAN 25 1999

WR-35

Reviewed MS

22-Jan-99

API # 47- 83-01157

State of West Virginia  
Division of Environmental Protection  
Section of Oil and Gas  
Well Operator's Report of Well Work

RECEIVED

Farm name: VANCE, HARVEY J Operator Well No.: ~~MAX 08 2000~~ #1

LOCATION: Elevation: 3,825.00 Quadrangle: HARMAN WV Oil and Gas Conservation Commission

District: DRY FORK County: RANDOLPH  
Latitude: 6220 Feet South of 38 Deg. 55Min. 0 Sec.  
Longitude 5960 Feet West of 79 Deg. 30 Min. 0 Sec.

Company: ARDENT RESOURCES, INC.  
P. O. BOX 8  
BETHEL PARK, PA 15102-0008

Agent: EDWARD HART

Inspector: PHILLIP TRACY  
Permit Issued: 01/22/99  
Well work Commenced: 01/27/99  
Well work Completed: 02/20/99  
Verbal Plugging  
Permission granted on: \_\_\_\_\_  
Rotary x Cable \_\_\_\_\_ Rig  
Total Depth (feet) 9230'  
Fresh water depths (ft) 3/4" @ 54'  
1/2" @ 500'  
Salt water depths (ft) none

Casing & Tubing	Used in Drilling	Left in Well	Cement Fill Up Cu. Ft.
Size			
20"	17'	17'	10 sx
13 3/8"	216'	216'	165 sx
9 5/8"	1802'	1802'	590 sx
4 1/2"	-	9188'	387 sx
2 3/8"	-	8990'	-

Is coal being mined in area (Y/N)? N  
Coal Depths (ft): \_\_\_\_\_

OPEN FLOW DATA

Producing formation Oriskany Sandstone Pay zone depth (ft) 9007' to 9054'  
Gas: Initial open flow 2017 MCF/d Oil: Initial open flow \_\_\_\_\_ Bbl/d  
Final open flow 1150 MCF/d Final open flow \_\_\_\_\_ Bbl/d  
Time of open flow between initial and final tests \_\_\_\_\_ Hours  
Static rock Pressure 2500 psig (surface pressure) after 48 Hours

Second producing formation N/A Pay zone depth (ft) \_\_\_\_\_  
Gas: Initial open flow \_\_\_\_\_ MCF/d Oil: Initial open flow \_\_\_\_\_ Bbl/d  
Final open flow \_\_\_\_\_ MCF/d Final open flow \_\_\_\_\_ Bbl/d  
Time of open flow between initial and final tests \_\_\_\_\_ Hours  
Static rock Pressure \_\_\_\_\_ psig (surface pressure) after \_\_\_\_\_ Hours

NOTE: ON BACK OF THIS FORM PUT THE FOLLOWING: 1). DETAILS OF PERFORATED INTERVALS, FRACTURING OR STIMULATING, PHYSICAL CHANGE, ETC. 2). THE WELL LOG WHICH IS A SYSTEMATIC DETAILED GEOLOGICAL RECORD OF ALL FORMATIONS, INCLUDING COAL ENCOUNTERED BY THE WELLBORE.

For: ARDENT RESOURCES, INC.  
By: Edward J. Hart  
Date: 04-18-00

RAN 1157

JUN 9 2000

DETAILS OF PERFORATED INTERVALS, FRACTURING OR STIMULATING, PHYSICAL CHANGE, ETC.

5/13/99 Perforated Oriskany @ 9007' to 9010', 9019' to 9022',  
9048' to 9054' w/4 spf.

5/14/99 Frac Oriskany w/100 sx 80/100 sand, 600 sx 20/40 sand, w/5% HCL  
throughout. Slurry volume 28,350 gals. Total HCL acid 5500 gals.  
BDP - 2540 psi, AIR - 35 BPM, ATP 4000 psi.

WELL LOG

FORMATION	COLOR	HARD OR SOFT	TOP FEET	BOTTOM FEET	REMARKS Including indication of all fresh and salt water, coal, oil and gas
sand and shale			surface	270	3/4" fresh wtr. @ 54'
shale			270	510	1/2" fresh wtr. @ 500'
sand			510	650	
shale			650	740	
sand and shale			740	900	
lime and shale			900	1250	
sand			1250	1450	
sand and shale			1450	1540	
shale			1540	1800	
sand and shale			1800	2000	
sand			2000	3080	
shale			3080	3560	
sand and shale			3560	3700	
shale			3700	3940	
sand			3940	4070	
shale			4070	7360	
sand			7360	7410	
shale			7410	7600	
sand			7600	7640	
shale			7640	8270	
lime (Tully)			8270	8300	
shale			8300	8620	
shale (Marcellus)			8620	8780	
lime (Onondaga)			8780	8840	
Chert (Huntersville)			8840	8890	
shale (Needmore)			8890	8925	
sand (Oriskany)			8925	9140	show gas @ 9010'
lime (Helderberg)			9140	Total Depth	

(Attach separate sheets as necessary)

Ardent Resources, Inc.  
Well Operator  
By: Terry L. Ward  
Date: 04-18-00

Note: Regulation 2.02(i) provides as follows:  
"The term 'log' or 'well log' shall mean a systematic  
detailed geological record of all formations, including  
coal, encountered in the drilling of a well."