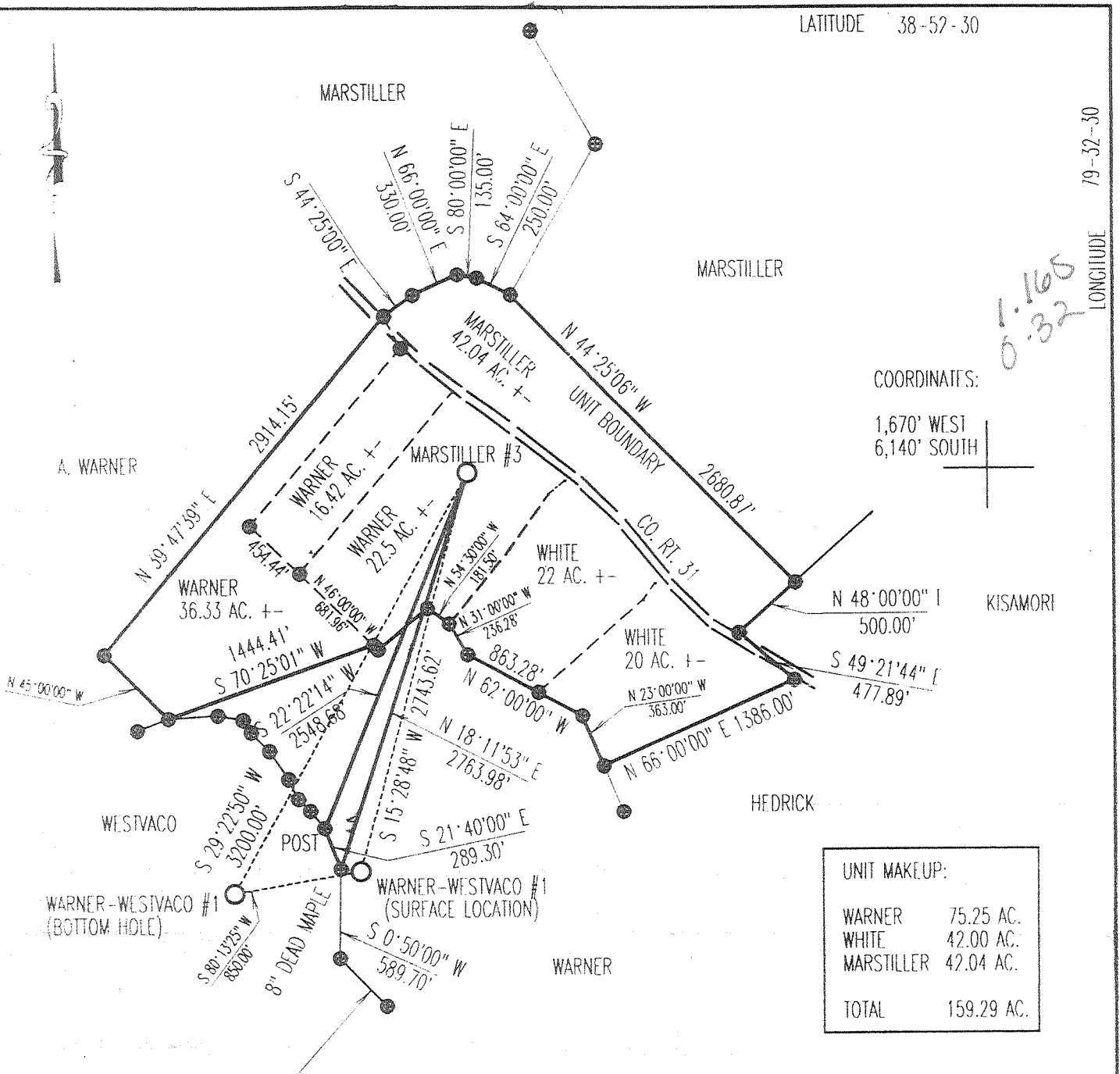


LATITUDE 38-52-30

LONGITUDE 79-52-30



1.165
0.32

COORDINATES:

1,670' WEST
6,140' SOUTH

NOTE: UNIT ACREAGES DETERMINED FROM CALCULATION AND RECORDED DOCUMENTS, NOT FROM SURVEY.

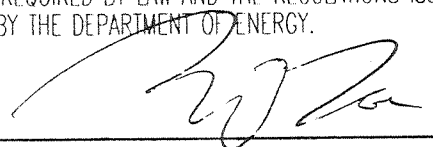
WELL REFERENCES:

N13-46W, 244.30' TO 6" BEECH
N62-16W, 296.07' TO 6" DOUBLE CRAB APPLE

(+) DENOTES LOCATION OF WELL ON UNITED STATES TOPOGRAPHIC MAPS

FILE NUMBER: _____
 DRAWING NUMBER: _____
 SCALE: 1" = 1000'
 MINIMUM DEGREE OF ACCURACY: 1 IN 200
 PROVEN SOURCE OF ELEVATION: RD. INTER. 1500' NW
 OF LOCATION ELEVATION = 2,693'

I THE UNDERSIGNED, HEREBY CERTIFY THAT THIS PLAT IS CORRECT TO THE BEST OF MY KNOWLEDGE AND BELIEF AND SHOWS ALL THE INFORMATION REQUIRED BY LAW AND THE REGULATIONS ISSUED AND PRESCRIBED BY THE DEPARTMENT OF ENERGY.

(SIGNED) 
 STEPHEN D. LOSH, P.S. #674



STATE OF WEST VIRGINIA
 DIVISION OF ENVIRONMENTAL PROTECTION
 OFFICE OF OIL AND GAS
 #10 McJUNKIN ROAD
 NITRO, WV 25143-2506

LAND SURVEYING SERVICES
 21 CEDAR LANE, BRIDGEPORT, WV 26330
 PHONE: 304-842-2018 OR 842-5762

DATE: APRIL 30, 1998
 OPERATORS WELL NO.: MARSTILLER #3
 API WELL NO. 47-083-01153
 STATE COUNTY PERMIT

WELL TYPE: OIL ___ GAS ___ LIQUID INJECTION ___ WASTE DISPOSAL ___
 (IF "GAS") PRODUCTION ___ STORAGE ___ DEEP ___ SHALLOW ___

LOCATION: ELEVATION 2,764.62' WATERSHED STINKING RUN
 DISTRICT DRY FORK COUNTY RANDOLPH
 QUADRANGLE WHITMER 7.5 MIN. LEASE NUMBER 47-10342

SURFACE OWNER ARLIE WARNER ACREAGE 22.50
 OIL & GAS ROYALTY OWNER ARLIE WARNER LEASE ACREAGE 499

PROPOSED WORK: DRILL CONVERT ___ DRILL DEEPER ___ REDRILL ___ FRACTURE OR STIMULATE ___ PLUG OFF OLD FORMATION ___
 PERFORATE NEW FORMATION ___ OTHER PHYSICAL CHANGE (SPECIFY) _____

TARGET FORMATION ORISKANY PLUG & ABANDON ___ CLEAN OUT & RI PLUG ___
 ESTIMATED DEPTH 8095' KB

WELL OPERATOR CABOT OIL & GAS CORPORATION DESIGNATED AGENT JOHN ABSHIRE
 ADDRESS RT. 3, BOX 583 CLARKSBURG, WV 26301 ADDRESS 400 FAIRWAY DR., SUITE 400 CORAOPOLIS, PA 15108-4308

COUNTY NAME
PERMIT

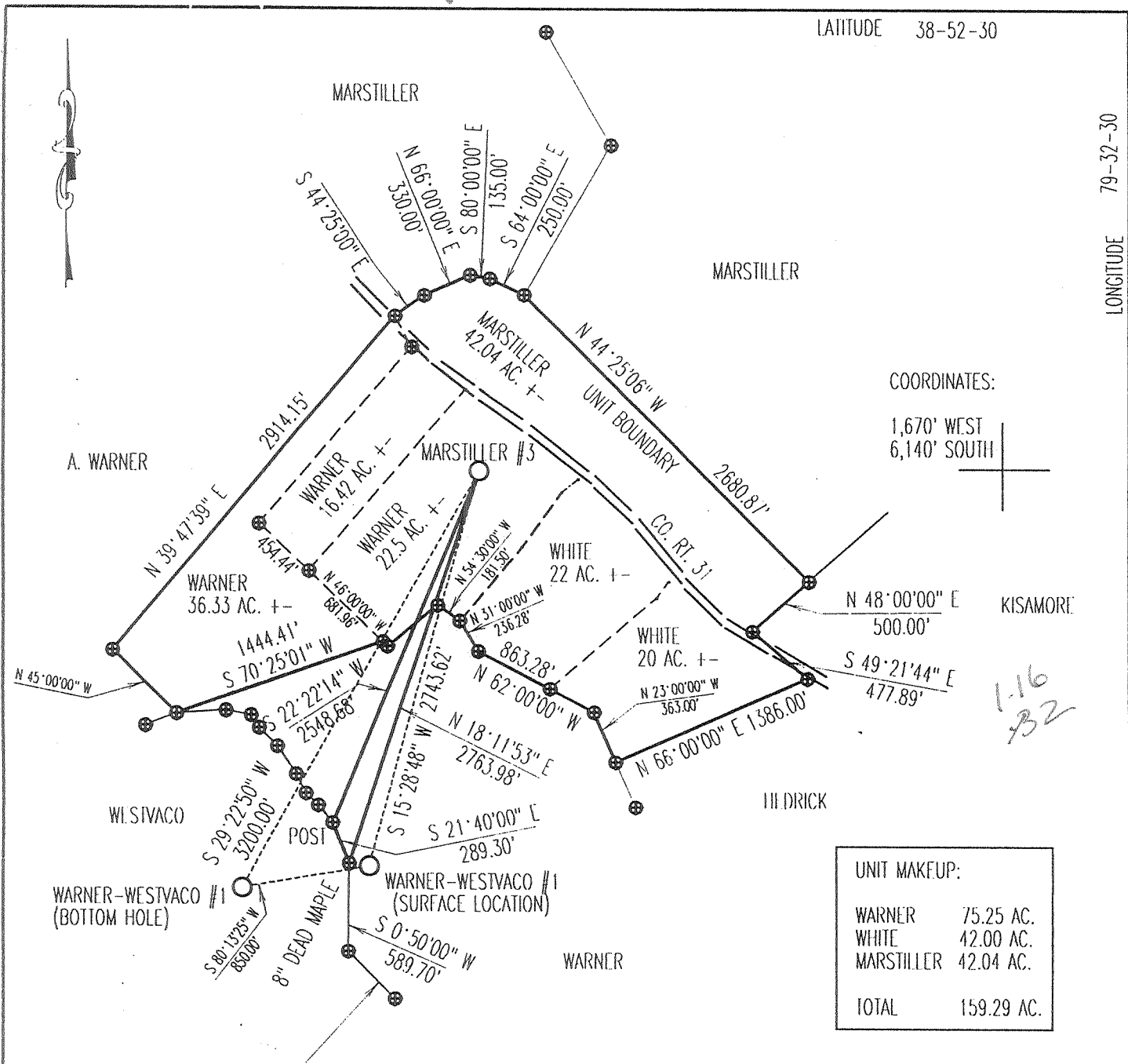
RAW
1153

DEEP WELL

6-6 384

LATITUDE 38-52-30

LONGITUDE 79-32-30



NOTE: UNIT ACREAGES DETERMINED FROM CALCULATION AND RECORDED DOCUMENTS, NOT FROM SURVEY.


WELL REFERENCES:

N13-46W, 244.30' TO 6" BEECH
N62-16W, 296.07' TO 6" DOUBLE CRAB APPLE

(+) DENOTES LOCATION OF WELL ON UNITED STATES TOPOGRAPHIC MAPS

FILE NUMBER: _____
 DRAWING NUMBER: _____
 SCALE: 1" = 1000'
 MINIMUM DEGREE OF ACCURACY: 1 IN 200
 PROVEN SOURCE OF ELEVATION: RD. INTER. 1500' NW
 OF LOCATION ELEVATION = 2,693'

I THE UNDERSIGNED, HEREBY CERTIFY THAT THIS PLAT IS CORRECT TO THE BEST OF MY KNOWLEDGE AND BELIEF AND SHOWS ALL THE INFORMATION REQUIRED BY LAW AND THE REGULATIONS ISSUED AND PRESCRIBED BY THE DEPARTMENT OF ENERGY.

(SIGNED) 
 STEPHEN D. LOSH, P.S. #674



STATE OF WEST VIRGINIA
 DIVISION OF ENVIRONMENTAL PROTECTION
 OFFICE OF OIL AND GAS
 110 MCJUNKIN ROAD
 NITRO, WV 25143-2506

LAND SURVEYING SERVICES
 21 CEDAR LANE, BRIDGEPORT, WV 26330
 PHONE: 304-842-2018 OR 842-5762

DATE: APRIL 30, 1998
 OPERATORS WELL NO.: MARSTILLER #3
 API WELL NO. 47-083-01153F
 STATE COUNTY PERMIT

WELL TYPE: OIL ___ GAS LIQUID INJECTION ___ WASTE DISPOSAL ___
 (IF "GAS") PRODUCTION STORAGE ___ DEEP SHALLOW ___

LOCATION: ELEVATION 2,764.62' WATERSHED STINKING RUN
 DISTRICT DRY FORK COUNTY RANDOLPH
 QUADRANGLE WHITMER 7.5 MIN. LEASE NUMBER 47-10342

SURFACE OWNER ARLIE WARNER ACREAGE 22.50
 OIL & GAS ROYALTY OWNER ARLIE WARNER LEASE ACREAGE 499

PROPOSED WORK: DRILL CONVERT ___ DRILL DEEPER ___ REDRILL ___ FRACTURE OR SIMILAR ___ PLUG OLD FORMATION ___
 PERFORATE NEW FORMATION ___ OTHER PHYSICAL CHANGE (SPECIFY) ___
 PLUG & ABANDON ___ CLEAN OUT & REPLUG ___

TARGET FORMATION ORISKANY ESTIMATED DEPTH _____

WELL OPERATOR CABOT OIL & GAS CORPORATION DESIGNATED AGENT JOHN ABSHIRE
 ADDRESS RT. 3, BOX 583 CLARKSBURG, WV 26301 ADDRESS 400 FAIRWAY DR., SUITE 400 CORAOPOLIS, PA 15108-4308

COUNTY NAME RANDOLPH PERMIT 1153F

WR-35

Date: 30-Oct-98
API # 47-083-01153

State of West Virginia
Division of Environmental Protection
Section of Oil and Gas
Well Operator's Report of Well Work

Farm name: Warner, Arlie Operator Well No.: Marsteller #3

LOCATION: Elevation: 2,780' Quadrangle: Valley Grove
District: Dry Fork County: Randolph
Latitude: 6,140 feet South of 38 DEG. 52 MIN. 30 SEC.
Longitude: 1,670 feet West of 79 DEG. 32 MIN. 30 SEC.

Company: Cabot Oil & Gas Corporation
400 Fairway Drive: Suite 400
Coraopolis, PA 15108-4308

Agent: John Abshire
Inspector: Phillip Tracy
Permit Issued: 6/3/98
Well Work Commenced: 6/14/98
Well Work Completed: 7/21/98
Verbal Plugging
Permission granted on:
Rotary X Cable Rig
Total Depth (feet) 7956'
Fresh Water Depths (ft) 6'

Salt Water Depths (ft) _____

Is coal being mined in area (Y / N)? _____
Coal Depths (ft) _____

Casing & Tubing Size	Used in Drilling	Left in Well	Cement Fill up Cu. Ft.
13-3/8"	60'	60'	150 sks Class "A"
9-5/8"	1545'	1545'	485 sks Class "A"
4-1/2"	7941'	7941'	280 sks Class "A"

OPEN FLOW DATA

Producing formation Oriskany (2nd Bench) Pay zone depth (ft) 7770' - 7780'
Gas: Initial open flow -- MCF/d Oil: Initial open flow N/A Bbl/d
Final open flow 950 MCF/d Final open flow N/A Bbl/d
Time of open flow between initial and final tests 4 Hours
Static rock pressure 2290 psig (surface pressure after 54 Hours)

Second producing formation _____ Pay zone depth (ft) _____
Gas: Initial open flow _____ MCF/d Oil: Initial open flow _____ Bbl/d
Final open flow _____ MCF/d Final open flow _____ Bbl/d
Time of open flow between initial and final tests _____ Hours
Static rock pressure _____ psig (surface pressure after _____ Hours)

NOTE: ON BACK OF THIS FORM PUT THE FOLLOWING: 1). DETAILS OF PERFORATED INTERVALS, FRACTURING OR STIMULATING, PHYSICAL CHANGE, ETC. 2). THE WELL LOG WHICH IS A SYSTEMATIC DETAILED GEOLOGICAL RECORD OF ALL FORMATIONS, INCLUDING COAL ENCOUNTERED BY THE WELLBORE.

For: CABOT OIL & GAS CORPORATION

By: Ray Prudnick, Jr.
Date: 10/30/98

RECEIVED
Office of Oil & Gas
Permitting
NOV 09 1998
DIVISION OF
Environmental Protection

RAND 1153

NOV 18 1998

OPEN FLOW DATA

Perf'd 2nd Bench of Oriskany from 7770'-7780'. Broke down with treated water @ 3550 psi. ISIP: 3100 psi. Frac'd with 2,200 bbls of 25# x-link gel and 153,000# sand. ATP: 3850 psi. MTP: 4600 psi. ATR: 30 bpm. ISIP: 3100 psi.

FORMATION	TOP	BOTTOM	REMARKS
KB	0	10	
Sand/Shale	10	2022	
Shale/Silt	2022	2443	
Silt/Shale	2443	2585	
Sand	2585	2620	
Shale/Sand	2620	2913	
Sand	2913	2957	
Shale	2957	2978	
Sand	2978	3053	
Shale/Sand	3053	4420	
Sand/Shale	4420	4618	
Shale	4618	5842	
Sand/Shale	5842	5920	
Shale	5920	6260	
Sand	6260	6305	
Shale	6305	6505	
Sand	6505	6521	
Shale	6521	7118	
Tully	7118	7145	
Shale/Lime	7145	7342	
Upper Marcellus	7342	7439	
Purcell	7439	7520	
Lower Marcellus	7520	7551	
Onondaga	7551	7587	
Huntersville	7587	7645	
Needmore	7645	7677	
Oriskany	7677	7885	
Helderberg	7885	7956	

11-8-99

WR-35

West Virginia
Office of Oil & Gas
Permitting
DEC 22 1999
WV Division of
Environmental Protection

Date: 30-Oct-98
API # 47-083-01153 F

State of West Virginia
Division of Environmental Protection
Section of Oil and Gas
Well Operator's Report of Well Work

Reviewed K

Farm name: Warner, Arlie Operator Well No.: Marsteller #3

LOCATION: Elevation: 2,780' Quadrangle: ~~Valley Grove~~ Whitmer
District: Dry Fork County: Randolph
Latitude: 6.140 feet South of 38 DEG. 52 MIN. 30 SEC.
Longitude: 1.670 feet West of 79 DEG. 32 MIN. 30 SEC.

Company: Cabot Oil & Gas Corporation
400 Fairway Drive: Suite 400
Coraopolis, PA 15108-4308

Agent: John Abshire
Inspector: Phillip Tracy
Permit Issued: 6/3/98
Well Work Commenced: 11/15/99
Well Work Completed: 12/13/99
Verbal Plugging
Permission granted on:
Rotary X Cable _____ Rig _____
Total Depth (feet) 7956'
Fresh Water Depths (ft) 6'
Salt Water Depths (ft) _____
Is coal being mined in area (Y / N)? _____
Coal Depths (ft) _____

Casing & Tubing Size	Used in Drilling	Left in Well	Cement Fill up Cu. Ft.
13-3/8"	60'	60'	150 sks Class "A"
9-5/8"	1545'	1545'	485 sks Class "A"
4-1/2"	7941'	7941'	280 sks Class "A"

OPEN FLOW DATA

Producing formation Oriskany (2nd Bench) Pay zone depth (ft) 7770' - 7780'
Gas: Initial open flow -- MCF/d Oil: Initial open flow N/A Bbl/d
Final open flow 950 MCF/d Final open flow N/A Bbl/d
Time of open flow between initial and final tests 4 Hours
Static rock pressure 2290 psig (surface pressure after 54 Hours

Second producing formation Chert Pay zone depth (ft) 7588' - 7608'
Gas: Initial open flow -- MCF/d Oil: Initial open flow N/A Bbl/d
Final open flow 70 MCF/d Final open flow N/A Bbl/d
Time of open flow between initial and final tests 12 Hours
Static rock pressure 1160 psig (surface pressure after 48 Hours

NOTE: ON BACK OF THIS FORM PUT THE FOLLOWING: 1) DETAILS OF PERFORATED INTERVALS, FRACTURING OR STIMULATING, PHYSICAL CHANGE, ETC. 2) THE WELL LOG WHICH IS A SYSTEMATIC DETAILED GEOLOGICAL RECORD OF ALL FORMATIONS, INCLUDING COAL ENCOUNTERED BY THE WELLBORE.

For: CABOT OIL & GAS CORPORATION

By: Ray Rudnick Jr.
Date: 12/17/99

FEB 18 2000
3/10/2000

RAW 1153 F

OPEN FLOW DATA

Perf'd 2nd Bench of Oriskany from 7770'-7780'. Broke down with treated water @ 3550 psi. ISIP: 3100 psi. Frac'd with 2,200 bbls of 25# x-link gel and 153,000# sand. ATP: 3850 psi. MTP: 4600 psi. ATR: 30 bpm. ISIP: 3100 psi.

Perf'd Chert from 7588'-7608'. Frac'd with 760 bbls of x-linked gel fluid and 51,000# of 20/40 sand. ATP: 2896 psi. MTP: 4655 psi. ATR: 13.8 bpm. ISIP: 3923 psi.

FORMATION	TOP	BOTTOM	REMARKS
KB	0	10	
Sand/Shale	10	2022	
Shale/Silt	2022	2443	
Silt/Shale	2443	2585	
Sand	2585	2620	
Shale/Sand	2620	2913	
Sand	2913	2957	
Shale	2957	2978	
Sand	2978	3053	
Shale/Sand	3053	4420	
Sand/Shale	4420	4618	
Shale	4618	5842	
Sand/Shale	5842	5920	
Shale	5920	6260	
Sand	6260	6305	
Shale	6305	6505	
Sand	6505	6521	
Shale	6521	7118	
Tully	7118	7145	
Shale/Lime	7145	7342	
Upper Marcellus	7342	7439	
Purcell	7439	7520	
Lower Marcellus	7520	7551	
Onondaga	7551	7587	
Huntersville	7587	7645	
Needmore	7645	7677	
Oriskany	7677	7885	
Helderberg	7885	7956	