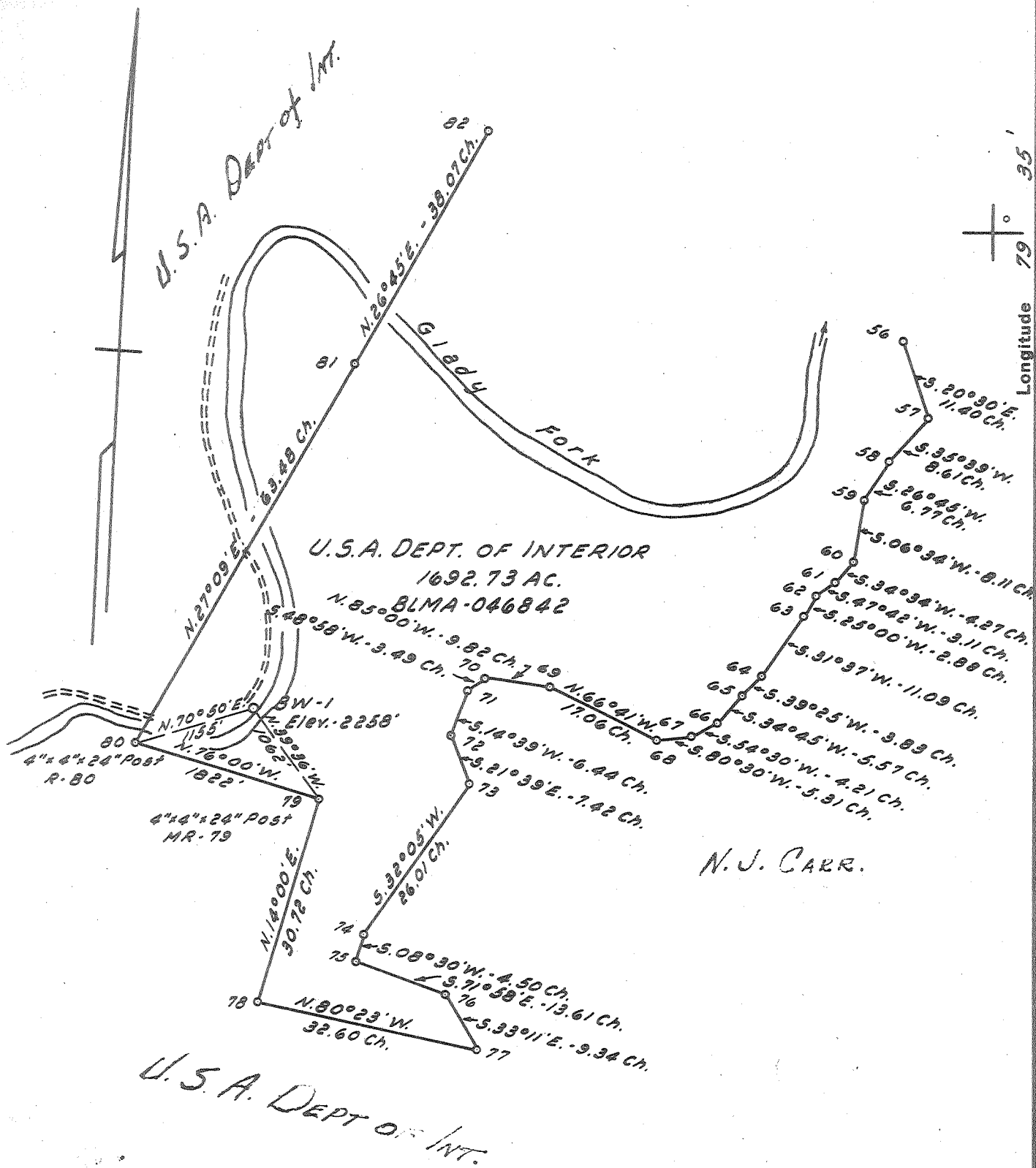


Latitude 39° 00'

Longitude 79° 35'



- New Location...
- Drill Deeper.....
- Abandonment.....

2005  
~~1.23 S.~~  
 0.47 W.  
 0.33 W  
 2 NE (11-13)

Company	HOLLY OIL & GAS CORP.
Address	702 2ND. ST., ST. MARYS, W. VA.
Farm	U.S.A. DEPT. OF INTERIOR
Tract	26c
Acres	1692.73
Lease No.	046842
Well (Farm) No.	
Serial No.	BW-1
Elevation (Spirit Level)	2258'
Quadrangle	HORTON - NC
County	RANDOLPH
District	DRY FORK
Engineer	JOHN W. HAMILTON
Engineer's Registration No.	2274
File No.	
Drawing No.	
Date	4-1-59
Scale	1" = 20 CHAINS

STATE OF WEST VIRGINIA  
 DEPARTMENT OF MINES  
 OIL AND GAS DIVISION  
 CHARLESTON

WELL LOCATION MAP

FILE NO. RAN-106

+ Denotes location of well on United States Topographic Maps, scale 1 to 62,500, latitude and longitude lines being represented by border lines as shown.

- Denotes one inch spaces on border line of original tracing.

No Samples

1-0 0

Deep Well



STATE OF WEST VIRGINIA  
DEPARTMENT OF MINES  
OIL AND GAS DIVISION /0

Quadrangle Horton

WELL RECORD

Permit No. RAN-106

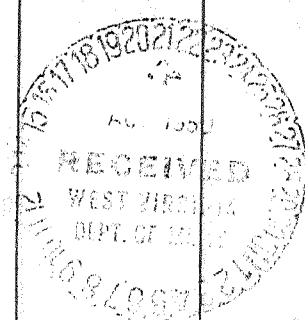
Oil or Gas Well Dry  
(KIND)

Company <u>Holly Oil &amp; Gas Corporation</u>	Casing and Tubing	Used in Drilling	Left in Well	Packers
Address <u>St. Marys, West Virginia</u>	Size			
Farm <u>USA Dept. of Interior</u> Acres <u>1692.73</u>	16			Kind of Packer
Location (waters) <u>Glady Fork</u>	13-3/8	40	40	
Well No. <u>BW-1</u> Elev. <u>2258</u>	10			Size of
District <u>Dry Fork</u> County <u>Randolph</u>	8-5/8	942	942	Depth set
The surface of tract is owned in fee by <u>USA Dept. of Int.</u>	8			Perf. top
Address <u>Washington, D. C.</u>	5 3/16			Perf. bottom
Mineral rights are owned by <u>USA Dept. of Int.</u>	2			Perf. top
Address <u>Washington, D.C.</u>	Liners Used			Perf. bottom
Drilling commenced <u>May 10, 1959</u>				
Drilling completed <u>June 21, 1959</u>				
Date Shot From To				
With				
Open Flow /10ths Water in Inch				
/10ths Merc. in Inch				
Volume Cu. Ft.				
Rock Pressure lbs. hrs.				
Oil bbls., 1st 24 hrs.				
Fresh water feet feet				
Salt water feet feet				

CASING CEMENTED Yes SIZE 8-5/8 No. Ft. 942 Date

COAL WAS ENCOUNTERED AT None FEET INCHES  
FEET INCHES FEET INCHES  
FEET INCHES FEET INCHES

Formation	Color	Hard or Soft	Top	Bottom	Oil, Gas or Water	Depth Found	Remarks
Gravel			0	50	Water		
Sand		Broken	50	60	Water		
Shale	Dark		60	100			
Sand	Grey		100	120			
Shale	Dark		120	170			
Sand	Light		170	190			
Shale	Dark		190	200			
Shale & Sand			200	310			
Sand	Grey		310	500			
Shale-Sand			500	990			
Sand	Light		990	1030			
Shale-Sand			1030	1340			
Sand	Light		1340	1380			
Shale	Grey		1380	1660			
Sand	Light	Hard	1660	1840			
Shale	Grey		1840	1860			
Sand (Hendricks)			1860	1910			
Shale	Grey		1910	3470			
Shale	Dark		3470	3590			
Shale	Black		3590	3650			
Shale-Sand			3650	4250			
Shale	Dark		4250	4400			
Shale	Black		4400	4520			
Shale	Dark		4520	4730			
Sand	Grey		4730	4780			
Shale	Dark		4780	5140			
Sand	White		5140	5170			
Shale	Brown		5170	5240			
Shale	Dark		5240	5230			
Shale	Grey		5430	5600			
Shale	Dark		5600	5790			
Lime			5790	6285			



(Over)

