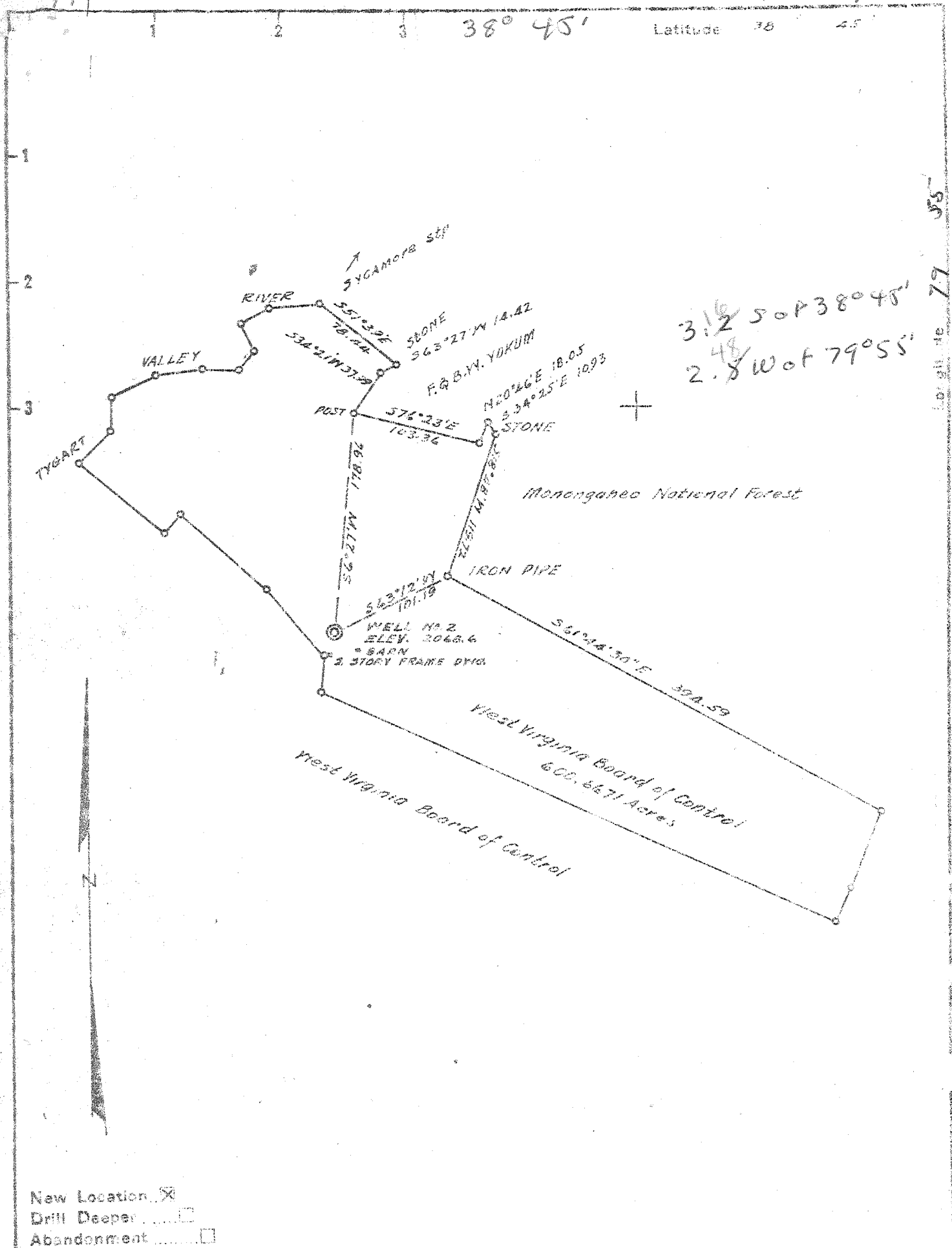


38° 45'

Latitude 38 45



New Location
 Drill Deeper
 Abandonment

Company SNEE AND EBERLY
 Address 208 UNION TRUST BLDG., UNIONTOWN, PA.
 Farm WEST VIRGINIA BOARD OF CONTROL
 Tract PRITT Acres 600.6671 Lease No. _____
 Well (Farm) No. 2 Serial No. _____
 Elevation (Spirit Level) 2068.6
 Quadrangle DURBIN - NW
 County RANDOLPH District HUTTONSVILLE
 Engineer D. W. Robertson
 Engineer's Registration No. 765
 File No. _____ Drawing No. _____
 Date 8-30-52 Scale 1"=100 FEET

STATE OF WEST VIRGINIA
 DEPARTMENT OF MINES
 OIL AND GAS DIVISION
 CHARLESTON

WELL LOCATION MAP
 FILE NO. RAN-11

+ Denotes location of well on United States Topographic Maps, scale 1 to 32,500, latitude and longitude lines being represented by border lines as shown.

- Denotes one inch spaces on border line of original tracing.

turn over

Deep 1-0

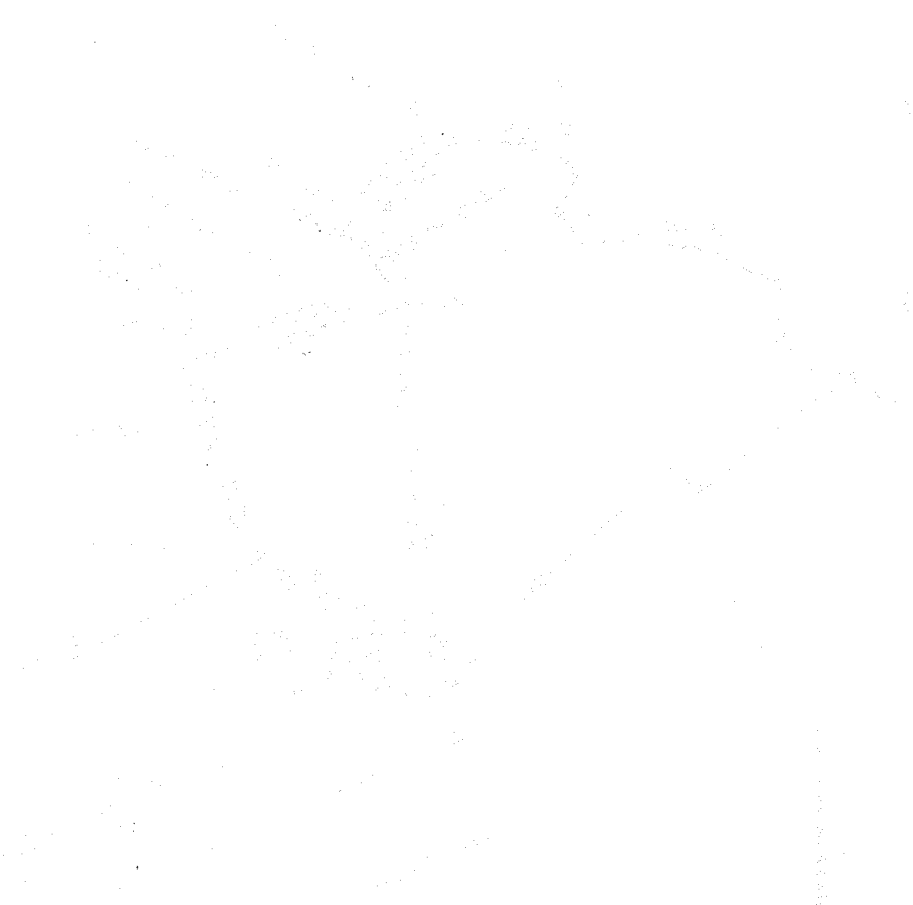
RAN-71

chart 3166 - 3330

Dn 3330 - 3350

Orisk 3350 - 3462 (TD)

Dry Hole



Scale 1:1000
Date 10/1/51
Sheet 22

Geological description and notes:

The diagram shows a cross-section of geological strata. The upper part of the section consists of a layer of rock dipping to the right. This layer is bounded by dashed lines and contains a stippled texture. Below this layer, there is a more complex geological structure, possibly representing a fault or a boundary between different geological units. The vertical dashed line on the right side of the diagram indicates a boundary or a specific geological feature.

Scale 1:1000
Date 10/1/51
Sheet 22

Geological description and notes:

The diagram shows a cross-section of geological strata. The upper part of the section consists of a layer of rock dipping to the right. This layer is bounded by dashed lines and contains a stippled texture. Below this layer, there is a more complex geological structure, possibly representing a fault or a boundary between different geological units. The vertical dashed line on the right side of the diagram indicates a boundary or a specific geological feature.



STATE OF WEST VIRGINIA
DEPARTMENT OF MINES
OIL AND GAS DIVISION

Durbin

WELL RECORD

Permit No. RAN-11

Oil or Gas Well Dry Hole
(500)

Company SNEE & FREELY
Address 208 Union Trust Bldg., Uniontown, Pa.
Farm W. Va. Medium Security Prison acres 2915
Location (waters) Tygart River
Well No. 2 Elev. 2068.6
District Huttonsville County Randolph
The surface of tract is owned in fee by W. Va. Board of Control Address Charleston, W. Va.
Mineral rights are owned by Same Address _____

Drilling commenced September 15, 1952
Drilling completed November 3, 1952
Date Shot Not Shot From _____ To _____
With No Gas Encountered
Open Flow /10ths Water in _____ Inch
/10ths Merc. in _____ Inch
Volume _____ Cu. Ft.
Rock Pressure _____ lbs. _____ hrs.
On No Oil Encountered _____ bbls., 1st 24 hrs.
Fresh water Hole full at 25 feet _____ feet
Salt water Hole full at 3155 feet _____ feet

| Casing and Tubing | Used in Drilling | Left in Well | Packers |
|-------------------|------------------|---------------------|----------------|
| Size | | | |
| 18 | | | Kind of Packer |
| 18 | <u>3 1/2"</u> | <u>to be pulled</u> | |
| 10 | <u>4 1/2"</u> | | Size of |
| 8 1/4 | | | |
| 6 1/4 | | | Depth set |
| 5 3/16 | | | |
| 2 | | | Perf. top |
| 2 | | | Perf. bottom |
| Liners Used | | | Perf. top |
| | | | Perf. bottom |

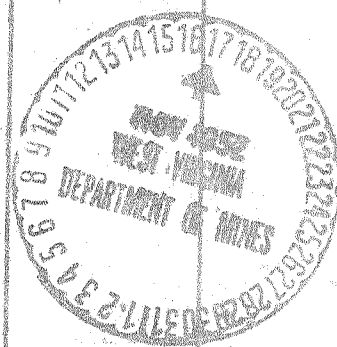
CASING CEMENTED 10" size 492 No. Ft. 9/25/52 Date

No Coal Present in Area
COAL WAS ENCOUNTERED AT _____ FEET _____ INCHES
_____ FEET _____ INCHES _____ FEET _____ INCHES
_____ FEET _____ INCHES _____ FEET _____ INCHES

| Formation | Color | Hard or Soft | Top | Bottom | Oil, Gas or Water | Depth Found | Remarks |
|--------------------|-----------|--------------|------|--------|-------------------|-------------|---------|
| Subsoil | | | 0 | 10 | | | |
| Slate | Black | | 10 | 340 | | | |
| Slate | Brown | | 340 | 470 | | | |
| Slate | White | | 470 | 550 | | | |
| Shale | Brown | | 550 | 630 | | | |
| Shale | White | | 630 | 725 | | | |
| Shale | Lt. Brown | | 725 | 895 | | | |
| Cinamon Shale | Brown | | 895 | 1000 | | | |
| Shale | Dk. Brown | | 1000 | 1100 | | | |
| Lime shells, Shale | Gray | | 1100 | 1150 | | | |
| Shale | Dk. Brown | | 1150 | 1250 | | | |
| Shale | Gray | | 1250 | 1380 | | | |
| Shale | Dk. Brown | | 1380 | 1450 | | | |
| Shale | Brown | | 1450 | 1600 | | | |
| Shale | Dk. Brown | | 1600 | 1750 | | | |
| Shale | Gray | | 1750 | 1850 | | | |
| Shale | Brown | | 1850 | 2000 | | | |
| Shale | Gray | | 2000 | 2250 | | | |
| Shale | Brown | | 2250 | 2400 | | | |
| Shale | Lt. Brown | | 2400 | 2600 | | | |
| Shale | Gray | | 2600 | 2750 | | | |
| Shale | Brown | | 2750 | 2820 | | | |
| Shale | White | | 2820 | 2840 | | | |
| Shale | Lt. Brown | | 2840 | 2900 | | | |
| Shale | Dk. Brown | | 2900 | 2910 | | | |
| Lime | | | 2910 | 2925 | | | |
| Shale | Dark | | 2925 | 3020 | | | |
| Shale | Black | | 3020 | 3166 | | | |
| Chert | | | 3166 | 3300 | | | |
| Broken Chert | Dark | | 3300 | 3330 | | | |
| Shale break | | | 3330 | 3350 | | | |
| Sand | | Hard | 3350 | 3462 | | | |

Original Recd
OT. No. 70

3166 3350
2069 2069
1097 -1281



HRVL

Water

3455

JAN 9 1953