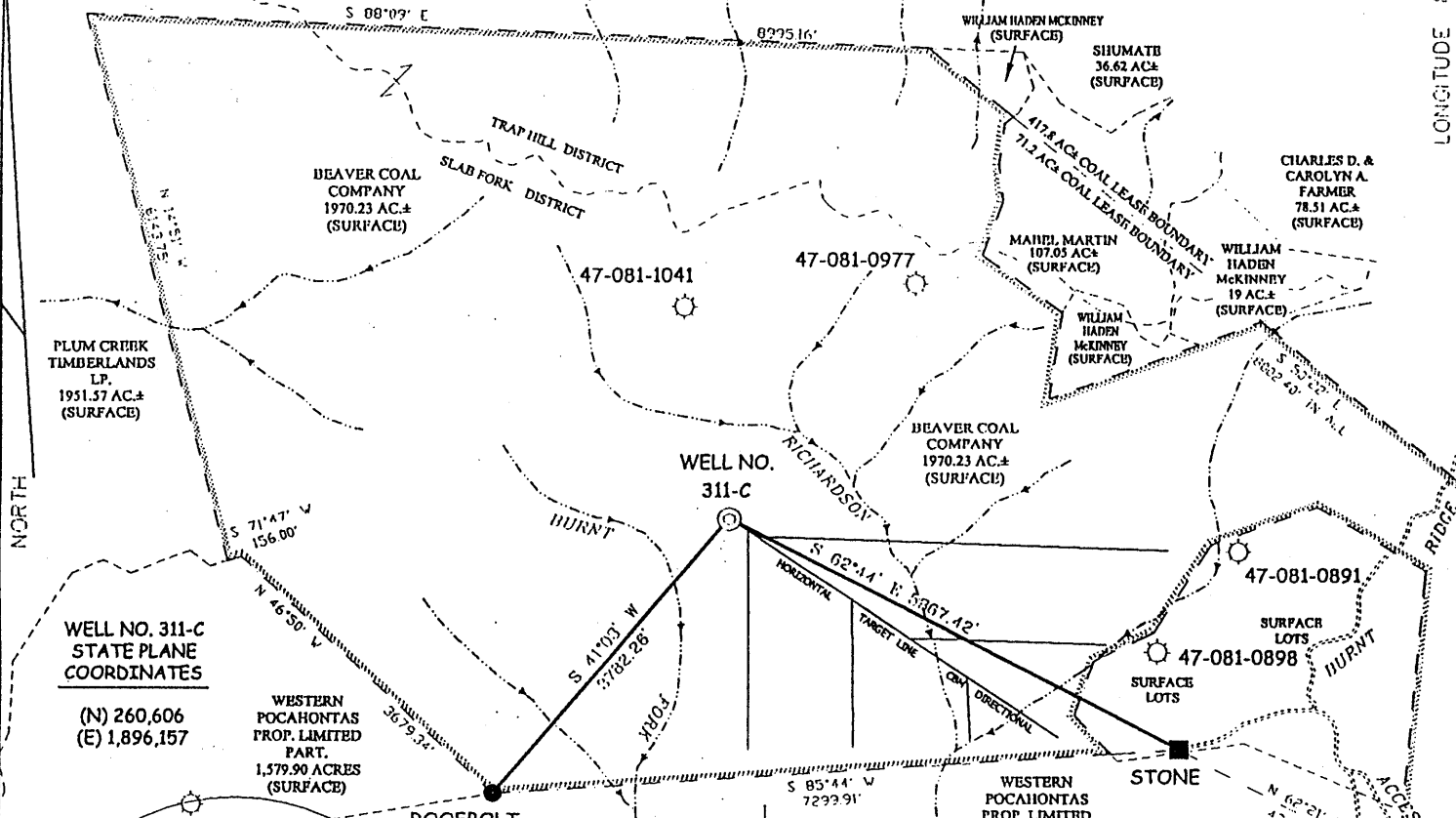


BEAVER COAL LEASE 2,180.63 ACRES±

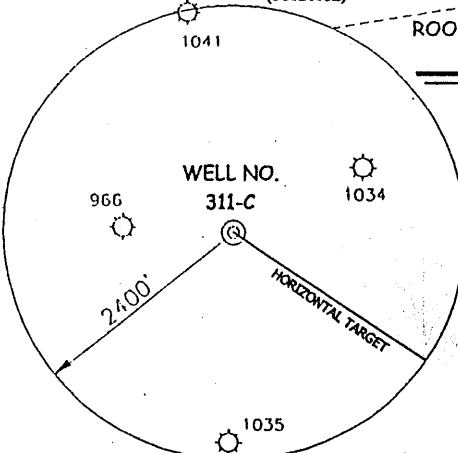
WELL NO. 311-C



WELL NO. 311-C
STATE PLANE
COORDINATES

(N) 260,606
(E) 1,896,157

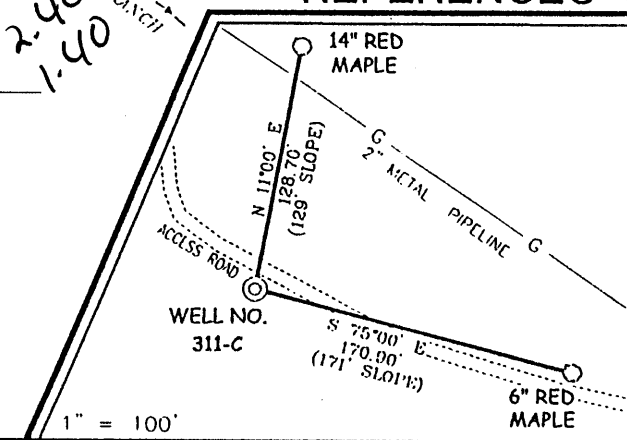
WESTERN
POCAHONTAS
PROP. LIMITED
PART.
1,579.90 ACRES
(SURFACE)



NOTES ON SURVEY

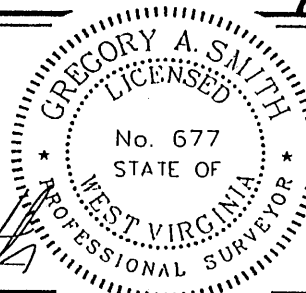
1. TIES TO WELLS AND CORNERS ARE BASED ON STATE PLANE GRID NORTH WV SOUTH ZONE NAD '27.
2. TIES TO REFERENCES ARE BASED ON MAGNETIC NORTH 12-13-01.
3. LEASE BOUNDARY SHOWN HEREON TAKEN FROM A PLAT RECORDED IN LEASE BOOK 29 PAGE 374A RECORDED IN THE RALEIGH COUNTY CLERK'S OFFICE
4. SURFACE OWNER AND ADJOINER INFORMATION TAKEN FROM THE ASSESSOR AND COUNTY CLERK RECORDS OF RALEIGH COUNTY IN DECEMBER, 2001.
5. WELL LAT./LONG. ESTABLISHED BY DGPS(SUBMETER MAPPING GRADE).

REFERENCES



I THE UNDERSIGNED, HEREBY CERTIFY THAT THIS PLAT IS CORRECT TO THE BEST OF MY KNOWLEDGE AND BELIEF AND SHOWS ALL THE INFORMATION REQUIRED BY LAW AND THE REGULATIONS ISSUED AND PRESCRIBED BY THE DIVISION OF ENVIRONMENTAL PROTECTION.

P.S. 677 *Gregory A. Smith*



(+) DENOTES LOCATION OF WELL ON UNITED STATES TOPOGRAPHIC MAPS.
 DATE DECEMBER 31, 20 01
 OPERATORS WELL NO 311-C
 API WELL NO. 47-81-01256C
 STATE COUNTY PERMIT

MINIMUM DEGREE OF ACCURACY 1 / 200 FILE NO. 3639P311C (115-12)
 PROVEN SOURCE OF ELEVATION BENCH MARK ELEVATION 2057' SCALE 1" = 2000'

STATE OF WEST VIRGINIA
 DIVISION OF ENVIRONMENTAL PROTECTION
 OFFICE OF OIL AND GAS

WELL TYPE : OIL GAS LIQUID INJECTION WASTE DISPOSAL IF "GAS" PRODUCTION STORAGE DEEP SHALLOW

LOCATION : ELEVATION 2464' WATERSHED BURNT FORK
 DISTRICT SLAB FORK COUNTY RALEIGH QUADRANGLE LESTER 7.5'
 SURFACE OWNER BEAVER COAL COMPANY ACREAGE 1970.23±
 ROYALTY OWNER BEAVER COAL COMPANY LEASE ACREAGE 2,180.63±
 PROPOSED WORK : LEASE NO. _____
 DRILL CONVERT DRILL DEEPER REDRILL FRACTURE OR STIMULATE PLUG OFF OLD FORMATION
 PERFORATE NEW FORMATION PLUG AND ABANDON CLEAN OUT AND REPLUG OTHER
 PHYSICAL CHANGE IN WELL (SPECIFY) _____ TARGET FORMATION POCAHONTAS NO. 3
 ESTIMATED DEPTH 1300'

WELL OPERATOR ENERGY SEARCH, INC. DESIGNATED AGENT FRANK ROTUNDA
 ADDRESS 280 SANDERS W. BLVD. SUITE 200 ADDRESS 1608 GREENMONT HILLS DR.
 KNOXVILLE, TN 37922 VIENNA, WV 26105

FEB 08

LONGITUDE 81°20'00"

12.550'

LAT. 37°42'54.5"

COUNTY NAME RAL

PERMIT 1256C

State of West Virginia
Department of Environmental Protection
Office of Oil and Gas

br7

Well Operator's Report of Well Work

Farm name: Beaver Coal

Operator Well No.: 311-C

LOCATION: Elevation: GL 2464'

Quadrangle: LESTER 7.5"

District: SLAB FORK

County: RALEIGH

Latitude: 12,650 Feet South of 37 Deg. 45 Min. 00 Sec.

Longitude 7,380 Feet West of 81 Deg. 20 Min. 00 Sec.

Company:

Energy Search, Inc	Casing & Tubing	Used in drilling	Left in well	Cement fill up Cu. Ft.
Address: 88 Products Lane, Marietta, Ohio 45750				
	20"	16'	16'	
Agent: Mike McCown				
Inspector: Rick Campbell	13 3/8"	302'	302'	185 sks
Date Permit Issued: 2/4/2002				
Date Well Work Commenced: 3/26/2002	9 5/8"	1029'	1029'	205 sks
Date Well Work Completed: 8/2002				
Verbal Plugging:	7"	1453'	Pulled	
Date Permission granted on:				
Rotary XX Cable Rig	5 1/2"		1914'MD	Not cemented
Total Depth (feet): Sump Hole 1950'MD/1400'TVD Main Lateral: 4222'MD/1998"TVD Leg 1: 3955'MD/1227"TVD Leg 2: 3897'MD/1205"TVD				
Fresh Water Depth (ft.): N/A	2 3/8"		1848'	
Salt Water Depth (ft.): N/A				
Is coal being mined in area (N/Y)? N				
Coal Depths (ft.):				

OPEN FLOW DATA

Producing formation Poca #3 Coal Seam Pay zone depth (ft) TVD Range 1205 -1998'
See schematic

Gas: Initial open flow 200 in-line MCF/d Oil: Initial open flow _____ Bbl/d
Final open flow 200 in-line MCF/d Final open flow _____ Bbl/d
Time of open flow between initial and final tests _____ Hours
Static rock Pressure 22 psig (surface pressure) after _____ Hours

Second producing formation _____ Pay zone depth (ft) _____
Gas: Initial open flow _____ MCF/d Oil: Initial open flow _____ Bbl/d
Final open flow _____ MCF/d Final open flow _____ Bbl/d
Time of open flow between initial and final tests _____ Hours
Static rock Pressure _____ psig (surface pressure) after _____ Hours

Signed: _____
By: Geologist
Date: 11-16-04

NOV 24 2004

RECEIVED
Office of Oil & Gas
Office of Chief
NOV 19 2004
WV Department of
Environmental Protection

RAL 1256

BEAVER COAL 311C RALEIGH CO., WV

JUN 24 2005

GL - 2464'
KB - 2470'

20" CONDUCTOR @ 16'

2 3/8" 4.7 #, EUE, 8RD TUBING TO 1856', 8' PERFORATED SUB, SN @ 1848', 2
25 3/5" BORE X 6' PUMP BARREL, 2' PUP. JT. AND 58 JOINTS TBG. 3/8" X 1

13 3/8" CSG @ 302'

9 5/8" CSG @ 1029'

5 1/2", 14#, J-55, ST&C CSG TO 1216'

3897' MD
1205' TVD

X-OVER TO
STEEL CSG
@ 1261'

KOP FOR LATERALS
1727' MD
1287' TVD

KOP FOR SUMP
1428' MD
1291' TVD

± 1289'-1457' 10 HOLES/JT
(60 X 1 1/2" HOLES)

± 1457'-1697' 5 HOLES/JT
(50 X 1 1/2" HOLES)

5 1/2", .250 AND .375 W, ALUMINUM
CSG @ 1216'-1914' MD
PERFED W/ TOTAL 110" HOLES

LOW POINT
1537' MD
1297' TVD

8 3/4" HOLE
FILL @ 1928' MD

1950' MD
1400' TVD

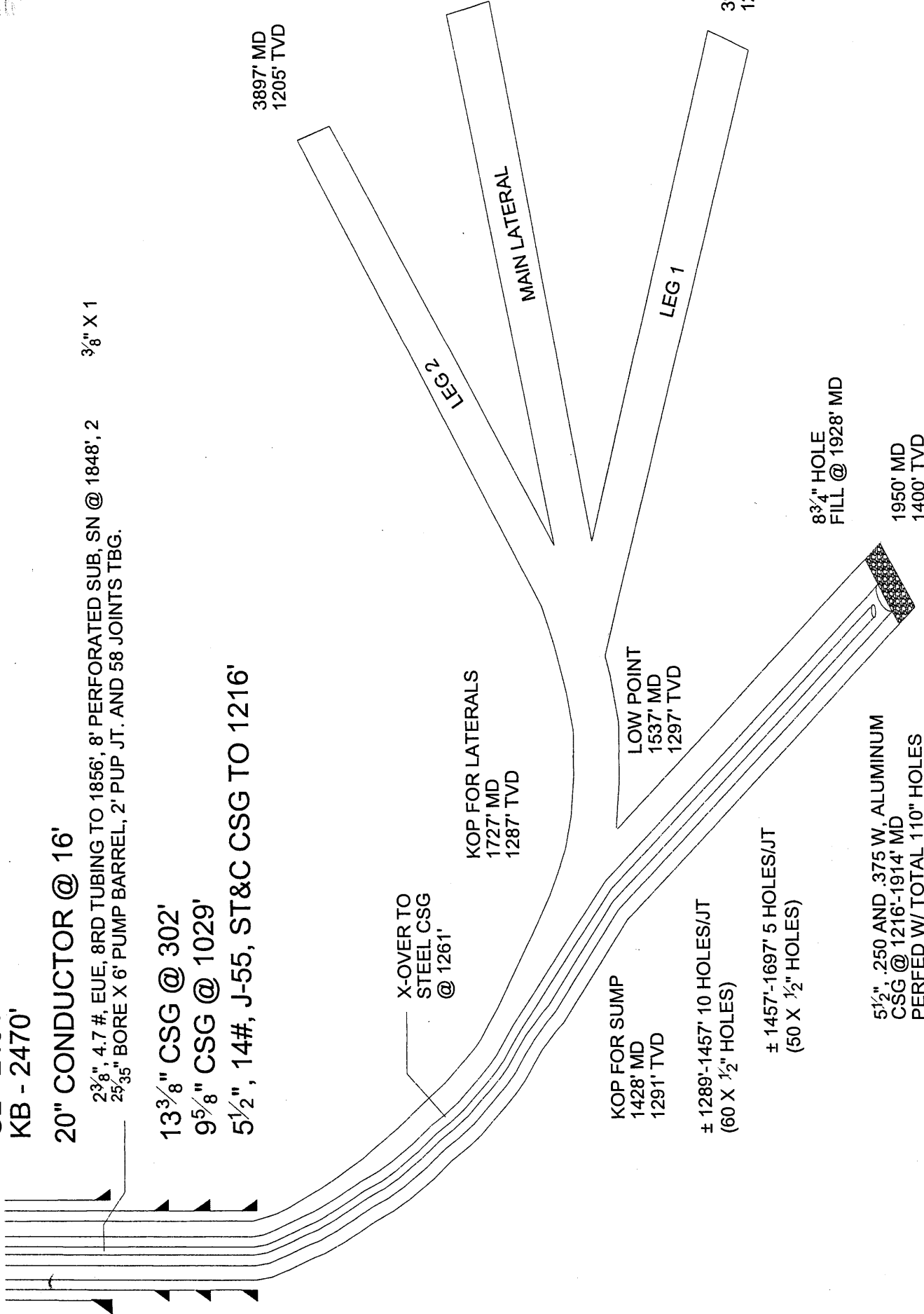
LEG 2

MAIN LATERAL

LEG 1

422
199

3955' MD
1227' TVD



GOS

State of West Virginia
Department of Environmental Protection
Office of Oil and Gas

Well Operator's Report of Well Work

Farm name: Beaver Coal

Operator Well No.: 311-C

LOCATION: Elevation: GL 2464'

Quadrangle: LESTER 7.5"

District: SLAB FORK

County: RALEIGH

Latitude: 12,650 Feet South of 37 Deg. 45 Min. 00 Sec.

Longitude 7,380 Feet West of 81 Deg. 20 Min. 00 Sec.

Company:

Energy Search, Inc	Casing & Tubing	Used in drilling	Left in well	Cement fill up Cu. Ft.
Address: 88 Products Lane, Marietta, Ohio 45750				
	20"	16'	16'	
Agent: Mike McCown				
Inspector: Rick Campbell	13 3/8"	302'	302'	185 sks
Date Permit Issued: 2/4/2002				
Date Well Work Commenced: 3/26/2002	9 5/8"	1029'	1029'	205 sks
Date Well Work Completed: 8/2002				
Verbal Plugging:	7"	1453'	Pulled	
Date Permission granted on:				
Rotary XX Cable Rig	5 1/2"		1914' MD	Not cemented
Total Depth (feet): Sump Hole 1950' MD/1400' TVD				
Main Lateral: 4222' MD/1998" TVD				
Leg 1: 3955' MD/1227" TVD > 1198				
Leg 2: 3897' MD/1205" TVD				
Fresh Water Depth (ft.): N/A	2 3/8"		1848'	
Salt Water Depth (ft.): N/A				
Is coal being mined in area (N/Y)? N				
Coal Depths (ft.):				

OPEN FLOW DATA

Producing formation Poca #3 Coal Seam Pay zone depth (ft) TVD Range 1205 -1998'

See schematic

Gas: Initial open flow 200 in-line MCF/d Oil: Initial open flow _____ Bbl/d

Final open flow 200 in-line MCF/d Final open flow _____ Bbl/d

Time of open flow between initial and final tests _____ Hours

Static rock Pressure 22 psig (surface pressure) after _____ Hours

Second producing formation _____ Pay zone depth (ft) _____

Gas: Initial open flow _____ MCF/d Oil: Initial open flow _____ Bbl/d

Final open flow _____ MCF/d Final open flow _____ Bbl/d

Time of open flow between initial and final tests _____ Hours

Static rock Pressure _____ psig (surface pressure) after _____ Hours

Signed:

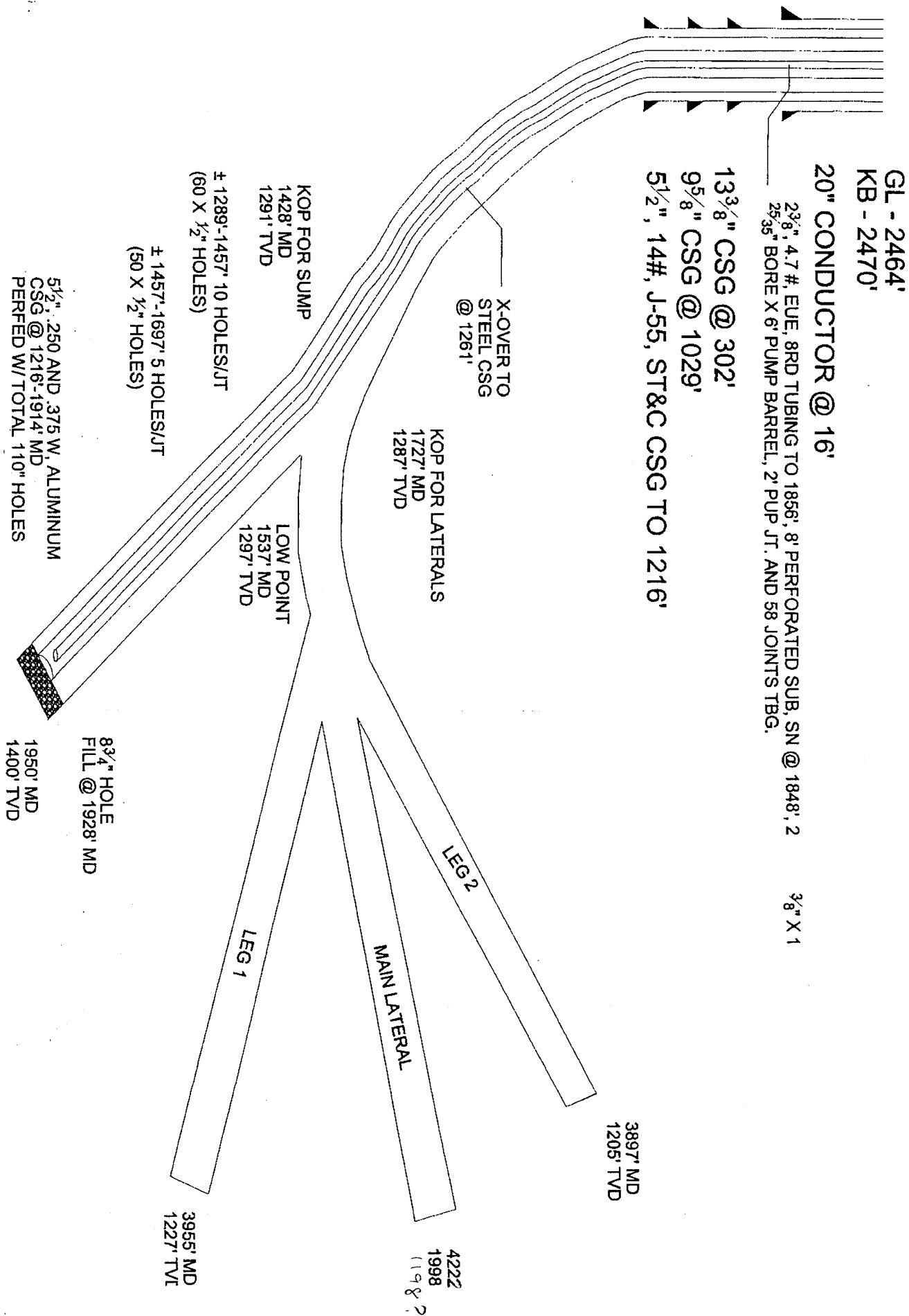
By: *Kent H. Stearns*

Date: 11-16-04

RECEIVED
Office of Oil & Gas
Office of Chief
MAR 18 2005
WV Department of
Environmental Protection

RAE 1256-C

BEAVER COAL 311C RALEIGH CO., WV



GL - 2464'
KB - 2470'

20" CONDUCTOR @ 16'

2 3/8", 4.7 #, EUE, 8RD TUBING TO 1856', 8" PERFORATED SUB, SN @ 1848', 2
25/32" BORE X 6' PUMP BARREL, 2' PUP JT. AND 58 JOINTS TBG.

3/8" X 1

13 3/8" CSG @ 302'

9 5/8" CSG @ 1029'

5 1/2", 14#, J-55, ST&C CSG TO 1216'

X-OVER TO
STEEL CSG
@ 1261'

KOP FOR LATERALS
1727' MD
1287' TVD

KOP FOR SUMP
1428' MD
1291' TVD

± 1289'-1457' 10 HOLES/JT
(60 X 1/2" HOLES)

± 1457'-1697' 5 HOLES/JT
(50 X 1/2" HOLES)

LOW POINT
1537' MD
1297' TVD

LEG 2

MAIN LATERAL

LEG 1

3897' MD
1205' TVD

4222
1998
1198 ?

3955' MD
1227' TVD

8 3/4" HOLE
FILL @ 1928' MD

1950' MD
1400' TVD

5 1/2" .250 AND .375 W. ALUMINUM
CSG @ 1216-1914' MD
PERFED W/ TOTAL 110" HOLES

APR 22 2005

R1-BSC/...