

WW-7
8-30-06



West Virginia Department of Environmental Protection
Office of Oil and Gas

WELL LOCATION FORM: GPS

API: 47-081-01155 WELL NO.: Rowland 29 (11785)

FARM NAME: Rowland Land Holding Company

RESPONSIBLE PARTY NAME: CNX Gas Company LLC

COUNTY: Raleigh DISTRICT: Clear Fork

QUADRANGLE: Dorothy

SURFACE OWNER: Rowland Land Holding Company

ROYALTY OWNER: Rowland Land Holding Company

UTM GPS NORTHING: 4,192,885.0 (m)

UTM GPS EASTING: 466,515.2 GPS ELEVATION: 2,265 (ft.)

The Responsible Party named above has chosen to submit GPS coordinates in lieu of preparing a new well location plat for a plugging permit or assigned API number on the above well. The Office of Oil and Gas will not accept GPS coordinates that do not meet the following requirements:

1. Datum: NAD 1983, Zone: 17 North, Coordinate Units: meters, Altitude: height above mean sea level (MSL) – meters.
2. Accuracy to Datum – 3.05 meters
3. Data Collection Method:

Survey grade GPS : Post Processed Differential
Real-Time Differential

Mapping Grade GPS : Post Processed Differential
Real-Time Differential

4. Letter size copy of the topography map showing the well location.

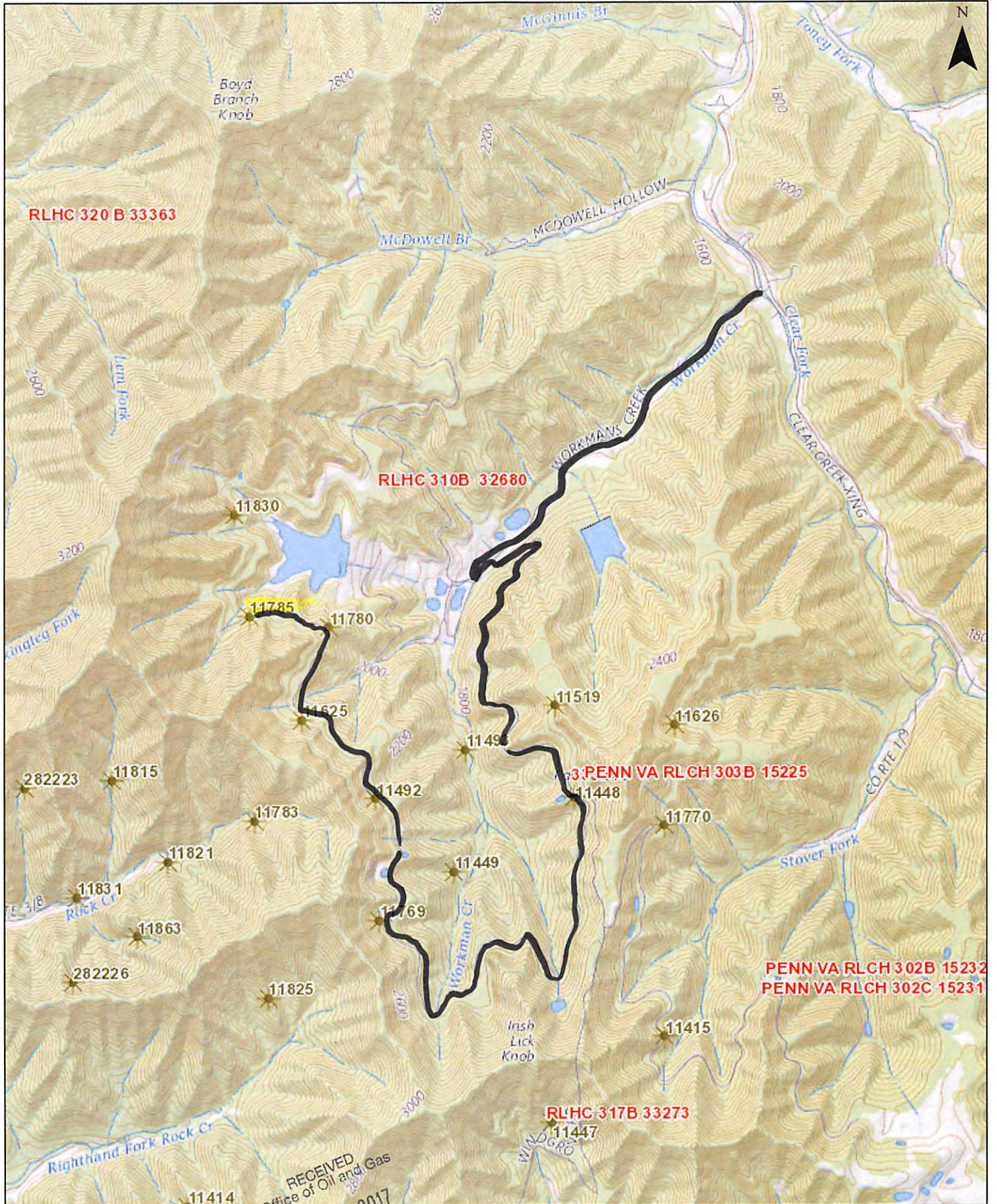
I the undersigned, hereby certify this data is correct to the best of my knowledge and belief and shows all the information required by law and the regulations issued and prescribed by the Office of Oil and Gas.

Jason Riley
Signature

Production Foreman
Title

8/16/17
Date

RECEIVED
Office of Oil and Gas
AUG 18 2017
WV Department of
Environmental Protection



Legend
 * CNX Marcellus Well Pad Centers - Drilled
 * CNX Utica Well Pad Centers - Drilled
 ~ - access road
 RECEIVED
 Office of Oil and Gas
 AUG 18 2017
 WV Department of Environmental Protection

0 750 1500 3000 4500 Feet
 Date: 8/10/2017 Prepared By: CNX Web Map
 This product was generated by
 CONSOL Energy's WEB Map
 Intended for Internal Use Only.

EMPOWER ENERGY
 General Reference Map
 ROWLAND 29
 09/15/2017
 (11785)