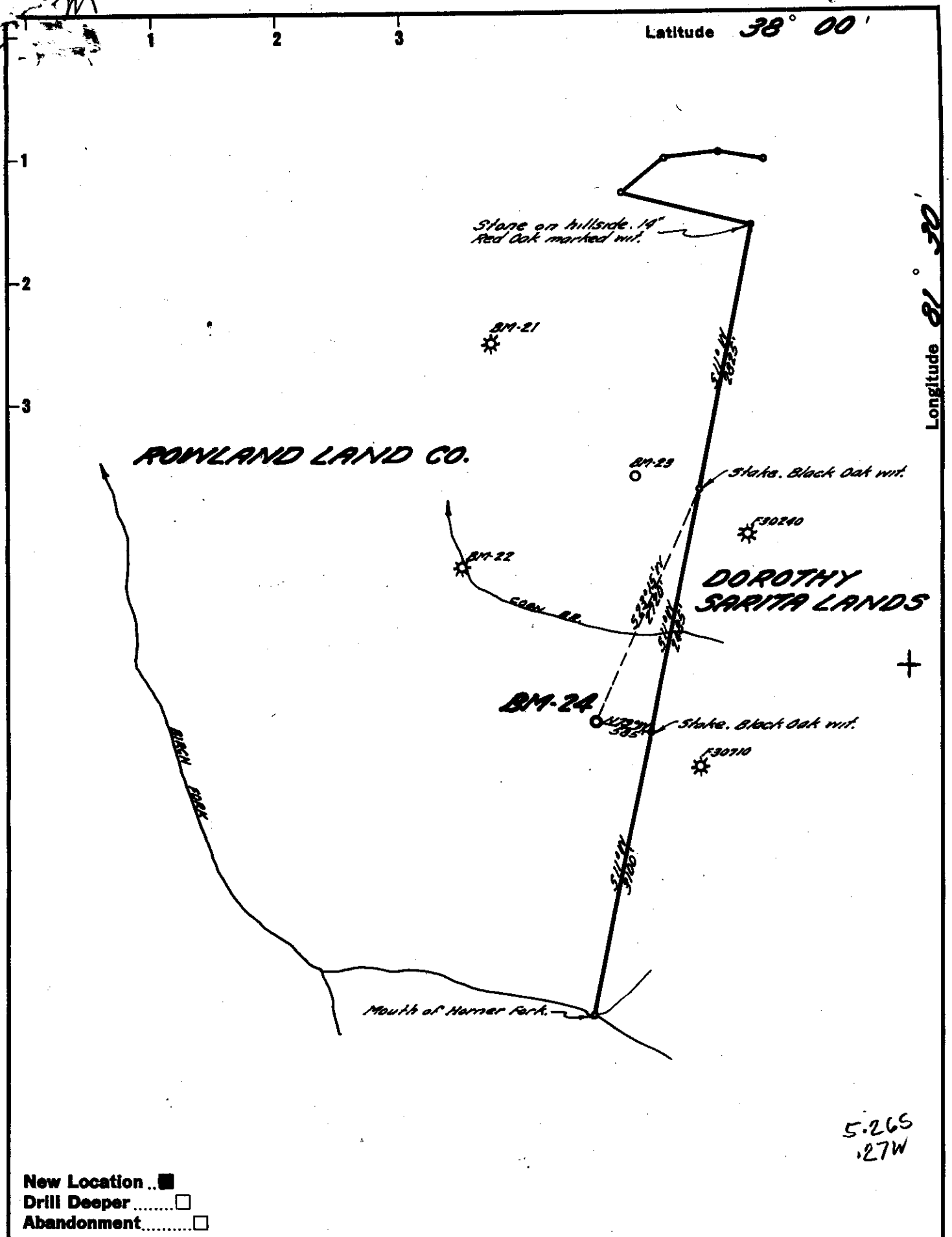


Latitude 38° 00'

Longitude 81° 30'



Company BIG MARSH OIL CO.
 Address CHARLESTON, W. VA.
 Farm ROWLAND LAND CO.
 Tract _____ Acres 6000 Lease No. BM #1
 Well (Farm) No. 22 Serial No. BM-24
 Elevation (Spirit Level) 2334.68'
 Quadrangle BALD KNOB NE
 County RALEIGH District MARSH FORK
 Engineer Lybert K. Howell
 Engineer's Registration No. 2529
 File No. 68-29 Drawing No. _____
 Date 8-21-59 Scale 1" = 1320'

STATE OF WEST VIRGINIA
 DEPARTMENT OF MINES
 OIL AND GAS DIVISION
 CHARLESTON

WELL LOCATION MAP

FILE NO. RAI-234

+ Denotes location of well on United States Topographic Maps, scale 1 to 62,500, latitude and longitude lines being represented by border lines as shown.
 - Denotes one inch spaces on border line of original tracing.



STATE OF WEST VIRGINIA
DEPARTMENT OF MINES
OIL AND GAS DIVISION

Quadrangle Bald Knob

Permit No. RAL-234

WELL RECORD

Oil or Gas Well Gas
Oil
(UNR)

Company Big Marsh Oil Company
Address P O Box 1273; Charleston 25, W. Va.
Farm Rowland Land Co. #22 Acres 6000
Location (waters) Little Marsh Fork
Well No. BM-24 Elev. 2334.68
District Marsh Fork County Raleigh, W. Va.
The surface of tract is owned in fee by _____
Address _____

Mineral rights are owned by Rowland Land Co.
Room 301; 1033 Quarrier St. Charleston, W. Va.

Drilling commenced 9-8-59
Drilling completed 12-23-59

Date Shot _____ From _____ To _____
With _____

Open Flow 11 /10ths Water in _____ Inch
5 1/2 /10ths Merc. in _____ Inch

Volume 3,186,000 - Weir _____ Cu. Ft.
Rock Pressure 710 lbs. 48 hrs.

Oil _____ bbls., 1st 24 hrs.
WELL ACIDIZED _____

WELL FRACTURED 2-5-60 with 500 bbls. water, 16,000 # Sand in Weir

RESULT AFTER TREATMENT Test 24 hrs. after Fracture 11/10 Merc. 5 1/2 15# 3,186 M

ROCK PRESSURE AFTER TREATMENT

Fresh Water 380-385; 545-550 Feet 670-675; 840-845 Salt Water _____ Feet

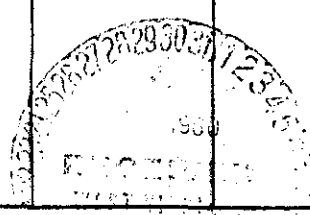
| Casing and Tubing | Used in Drilling | Left in Well | Packers |
|-------------------|------------------|--------------|----------------|
| Size | | | Kind of Packer |
| 16 | | | |
| 18 3/8 | | 17' | |
| 10 3/4 | | 1447 | Size of |
| 8 5/8 | | 2529 | |
| 6 5/8 | | | Depth set |
| 5 3/8 1/2 | | 3858 | |
| 3 | | | Perf. top |
| 2 | | | Perf. bottom |
| Liners Used | | | Perf. top |
| | | | Perf. bottom |

CASING CEMENTED SIZE No. Ft. Date

COAL WAS ENCOUNTERED AT 81 FEET 48 INCHES
146 FEET 48 INCHES 272 FEET 36 INCHES
660 FEET 48 INCHES 916 FEET 36 INCHES

| Formation | Color | Hard or Soft | Top | Bottom | Oil, Gas or Water | Depth | Remarks |
|----------------|-------|--------------|-----|--------|-------------------|------------|----------------------------------|
| Sand | | | 0 | 68 | Water | 380-385' | 1/2 bailer every 2 hours |
| Slate | | | 68 | 71 | | | |
| Sand | | | 71 | 81 | Water | 545-550' | 1 bailer every 2 hours |
| Coal | | | 81 | 85 | | | |
| Sand | | | 85 | 99 | Water | 670-675' | 1 bailer every hour |
| Slate | | | 99 | 117 | | | |
| Sand | | | 117 | 146 | Water | 840-845' | 2 bailers per hour |
| Coal | | | 146 | 150 | | | |
| Slate | | | 150 | 158 | Gas | 3748-3758' | 7/10 W 1" 28 M |
| Sand | | | 158 | 194 | Gas | 3776-3788' | 10/10 W 1" 33 M |
| Slate | | | 194 | 200 | Gas | 3797-3812' | 26/10 W 1" 54 M |
| Sand | | | 200 | 272 | Gas | 3812-3826' | 44/10 W 1" 70 M |
| Coal | | | 272 | 275 | | | |
| Slate | | | 275 | 283 | | | |
| Sand | | | 283 | 300 | | | |
| Slate & Shells | | | 300 | 330 | | | Test before Fracture - show |
| Mine - Open | | | 330 | 335 | | | |
| Slate | | | 335 | 354 | | | |
| Sand | | | 354 | 500 | | | |
| Slate | | | 500 | 512 | | | |
| Sand | | | 512 | 529 | | | Shut in 2-6-60 in 5 1/2" casing. |
| Slate | | | 529 | 540 | | | |
| Sand | | | 540 | 600 | | | |
| Slate | | | 600 | 610 | | | |
| Sand | | | 610 | 660 | | | |
| Coal | | | 660 | 664 | | | |
| Sand | | | 664 | 753 | | | |
| Slate | | | 753 | 757 | | | |
| Sand | | | 757 | 775 | | | |
| Slate | | | 775 | 835 | | | |

(over)



| Formation | Color | Hard or Soft | Top <i>12</i> | Bottom | Oil, Gas or Water | Depth Found | Remarks |
|----------------|-------|--------------|---------------|--------|-------------------|-------------|---------|
| Sand | | | 835 | 845 | | | |
| Slate | | | 845 | 860 | | | |
| Sand | | | 860 | 916 | | | |
| Coal | | | 916 | 919 | | | |
| Slate & Shells | | | 919 | 1015 | | | |
| Sand | | | 1015 | 1095 | | | |
| Slate | | | 1095 | 1110 | | | |
| Sand | | | 1110 | 1264 | | | |
| Slate | | | 1264 | 1290 | | | |
| Sand | | | 1290 | 1325 | | | |
| Slate & Shells | | | 1325 | 1380 | | | |
| Sand | | | 1380 | 1393 | | | |
| Slate & Shells | | | 1393 | 1655 | | | |
| Sand | | | 1655 | 1679 | | | |
| Slate & Shells | | | 1679 | 1766 | | | |
| Hard Sand | | | 1766 | 1823 | | | |
| Slate | | | 1823 | 1828 | | | |
| Sand | | | 1828 | 1870 | | | |
| Slate | | | 1870 | 1895 | | | |
| Sand | | | 1895 | 1948 | | | |
| Slate | | | 1948 | 1967 | | | |
| Salt Sand | | | 1967 | 2203 | | | |
| Slate & Shells | | | 2203 | 2225 | | | |
| Sand | | | 2225 | 2340 | | | |
| Slate & Shells | | | 2340 | 2372 | | | |
| Sand | | | 2372 | 2392 | | | |
| Slate & Shells | | | 2392 | 2425 | | | |
| Sand | | | 2425 | 2505 | | | |
| Slate & Shells | | | 2505 | 2570 | | | |
| Sand | | | 2570 | 2600 | | | |
| Slate | | | 2600 | 2604 | | | |
| Sand | | | 2604 | 2629 | | | |
| Slate | | | 2629 | 2646 | | | |
| Red Rock | | | 2646 | 2648 | | | |
| Slate & Shells | | | 2648 | 2741 | | | |
| Lime | | | 2741 | 2763 | | | |
| Slate | | | 2763 | 2774 | | | |
| Red Rock | | | 2774 | 2830 | | | |
| Lime Shells | | | 2830 | 2870 | | | |
| Red Rock | | | 2870 | 2958 | | | |
| Slate & Shells | | | 2958 | 3000 | | | |
| Red Rock | | | 3000 | 3104 | | | |
| Slate & Shells | | | 3104 | 3222 | | | |
| Maxon Sand | | | 3222 | 3259 | | | |
| Slate & Shells | | | 3259 | 3265 | | | |
| Lime Shells | | | 3265 | 3293 | | | |
| Black Lime | | | 3293 | 3420 | | | |
| Big Lime | | | 3420 | 3671 | | | |
| Black Lime | | | 3671 | 3696 | | | |
| Red Injun | | | 3696 | 3711 | | | |
| Slate & Shells | | | 3711 | 3743 | | | |
| Weir Sand | | | 3743 | 3823 | | | |
| Slate & Shells | | | 3823 | 3858 | | | |
| Total Depth | | | 3858 | | | | |

MEET RECORD

Date March 29, 1960

APPROVED BY BIG MARSH OIL COMPANY, Owner

By S. L. Jewell
(Title) Supt., Civil Engineering Dept.

