

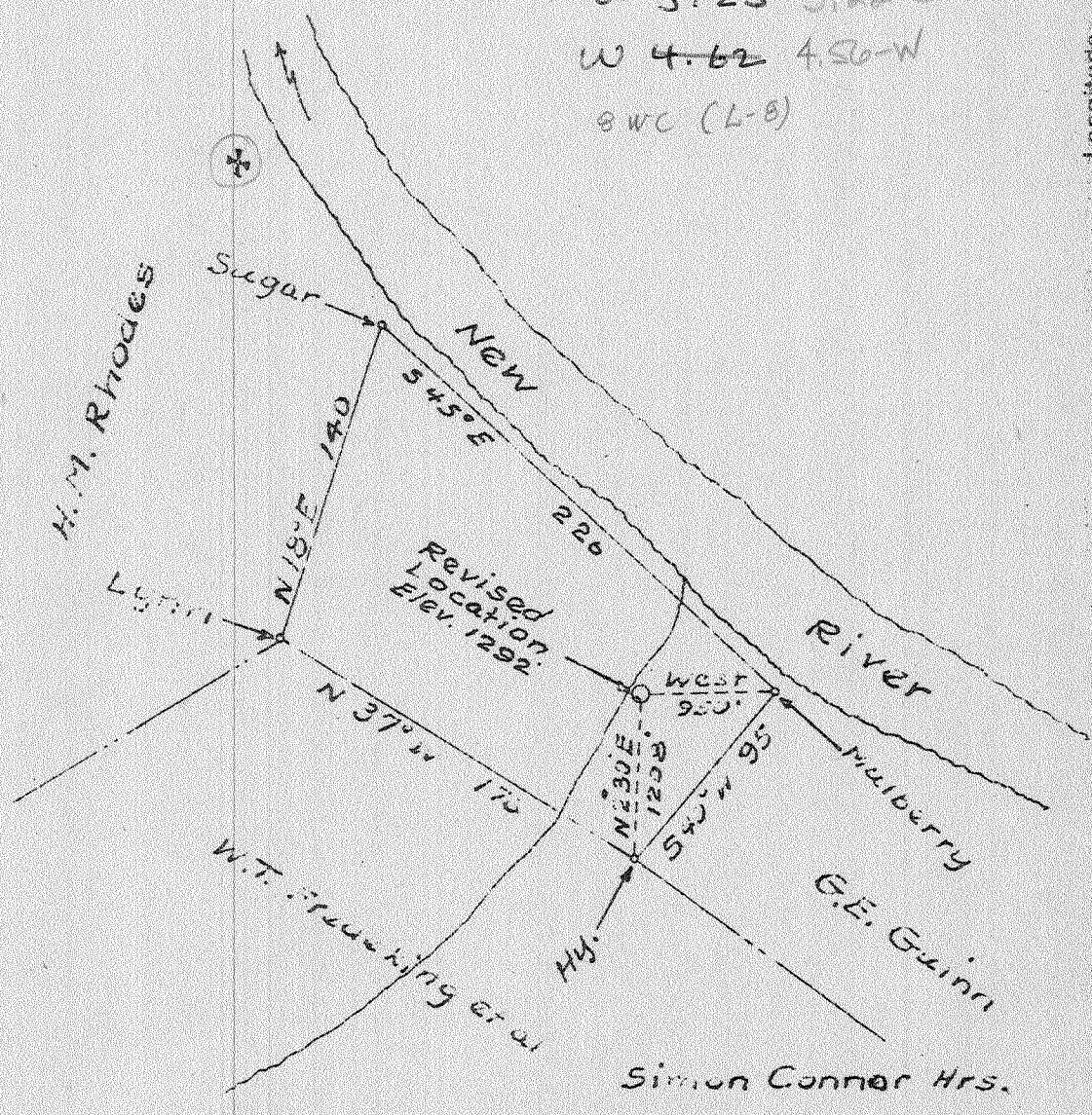
M4

P

Latitude 37 50

Longitude 80 50

J ~~3.23~~ 3.22-5
W 4.62 4.50-W
8WC (L-8)



New Location **Revised Location**
 Drill Deeper
 Abandonment

Company Godfrey L. Cabot, Inc.
 Address 900 Union Bldg. Charleston W.Va
 Farm C. E. Guinn
 Tract Acres 138 Lease No. 4-423
 Well (Farm) No. 1 Serial No. 1115
 Elevation (Spirit Level) 1292'
 Quadrangle Meadow Creek-SC
 County Raleigh District Richmond
 Engineer Forrest McElroy
 Engineer's Registration No. 610
 File No. _____ Drawing No. _____
 Date 2-21-43 Scale 1" = 1320'

STATE OF WEST VIRGINIA
 DEPARTMENT OF MINES
 OIL AND GAS DIVISION
 CHARLESTON

WELL LOCATION MAP
 FILE NO. RA4-36-R

+ Denotes location of well on United States Topographic Maps, scale 1 to 62,500, latitude and longitude lines being represented by border lines as shown.
 - Denotes one inch spaces on border line of original tracing.

Sample 5-G (779-6395') 1-0 a Deep well

4

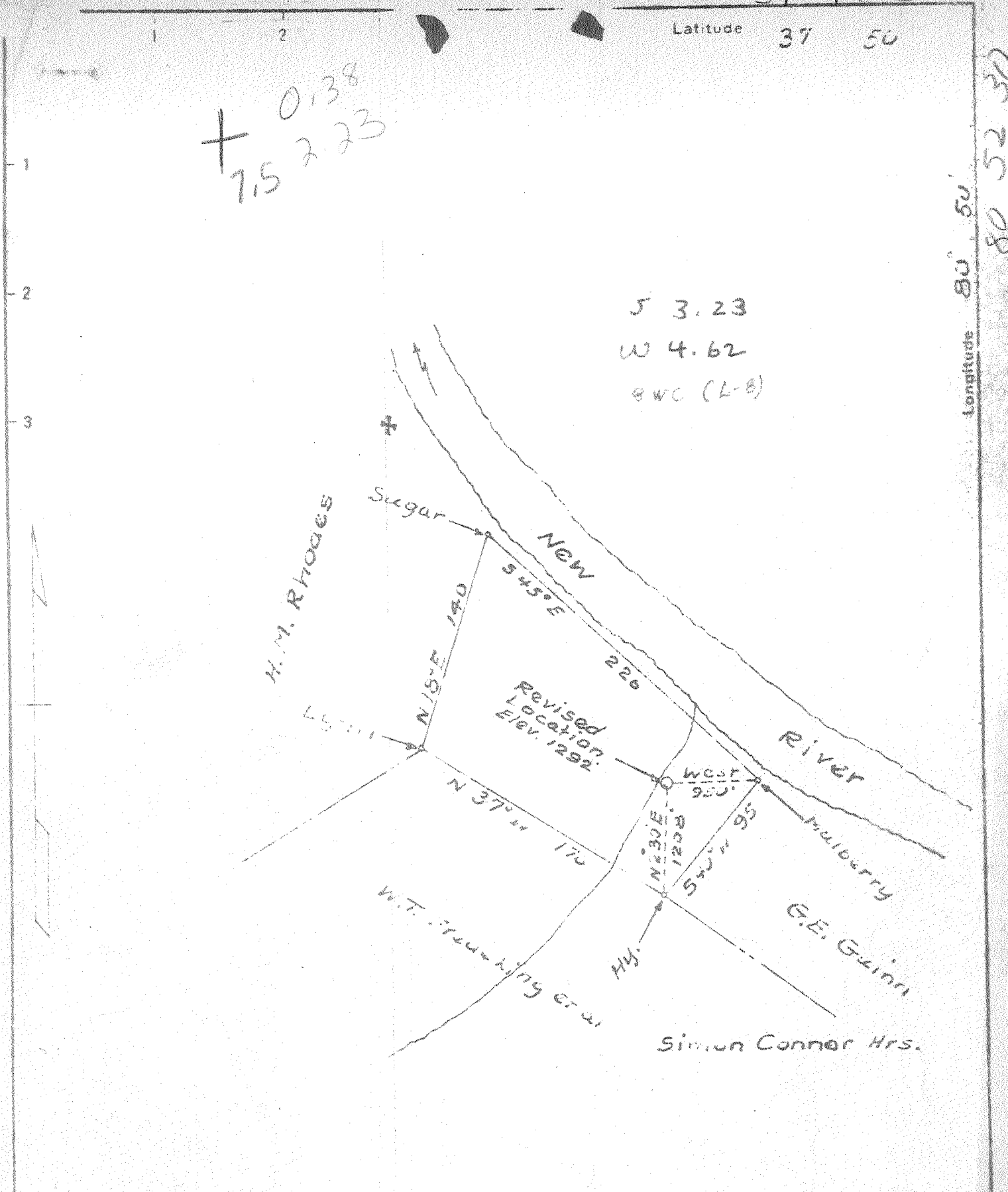
37 47 30

Latitude 37 50

+ 0.38
7.5 2.23

S 3.23
W 4.62
8 WC (L-8)

Longitude 80 52 30



Revised Location

New Location
Drill Deeper
Abandonment

Company Godfrey L Cabot, Inc.
 Address 900 Union Bldg. Charleston W. Va.
 Farm C. E. Gwinn
 Tract Acres 138 Lease No. 4-423
 Well (Farm) No. 1 Serial No. 1115
 Elevation (Spirit Level) 1292
 Quadrangle Meadow Creek-SC
 County Raleigh District Richmond
 Engineer J. P. Mc...
 Engineer's Registration No. 610
 File No. _____ Drawing No. _____
 Date 2-21-22 Scale 1" = 1320

STATE OF WEST VIRGINIA
 DEPARTMENT OF MINES
 OIL AND GAS DIVISION
 CHARLESTON

WELL LOCATION MAP
 FILE NO. RAL-36-R

+ Denotes location of well on United States Topographic Maps, scale 1" to 62,500', latitude and longitude lines being represented by border lines as shown.
 - Denotes one inch spaces on border line of original tracing

Deep Well

WEST VIRGINIA DEPARTMENT OF MINES
OIL & GAS DIVISION
W E L L R E C O R D

Well Abandoned

Permit No. Bal 38
Meadow Creek Quad.
Company
Address
Farm
Location
Well No
District
Surface
Mineral
Commenced
Completed
Date shot
Volume
Fresh Water

Godfrey L. Cabot, Inc.
Charleston, W. Va. 16 22
C. E. Gwinn Acres 18 51
1 Ser 1115 Elev. 1294 10 737
Richmond Raleigh County 8 1944
7 6205

Gas Well
CASING & TUBING

Sept. 14, 1943
April 19, 1944
4-24-44 Depth 6320 to 5340 40 qts.
B.S. 15 MCF A.S. 2 1/2 hrs. 21 MCF
40' H.F.; 60' H.F. 440' H.F.

Quick Sand	0	50	Gritty Lime	3900	4150
Lime Shale	50	100	Lime, Hard	4150	4290
Red Rock	100	125	Gritty Lime	4290	4320
Lime, Hard	125	140	Lime, Hard	4320	5025
Red Rock	140	200	Slate & Shells	5025	5900
Lime, Hard	200	225	Black Shale	5900	6185
Red Rock	225	230	Corniferous Lime	6185	4914 6273
Shale	230	250	Criskany Sand	6273-6314	6240 6297
Red Rock	250	280	Lime, Helderberg	6297-6349	6349
Lime	280	290	Sand "	6349	6380
Red Rock	290	320	Lime "	6380	6390
Blue Shale	320	350	TOTAL DEPTH		6397
Lime	350	375	SLM 6330 Gas 6323' 15 M		
Shale	375	410			
Lime	410	460	CRISKANY SAND ACIDIZED 5-3-44		
Shale	460	485			
Lime, Hard	485	500	Gauge before acidizing 15 MCF		
Shale	500	525	Gauge after acidizing 4 MCF		
Shale, Shells	525	545			
Lime, Hard	545	555			
Shale	555	580			
Lime, Hard	580	620			
Shale	620	690			
Lime, Hard	690	710			
Slate	710	742			
Lime, Very Hard	742	810			
Shale	810	870			
Lime, Hard	870	1118			
Slate	1118	1123			
Lime, Hard	1123	1310			
Sandy Lime	1310	1315			
Red Rock	1315	1317			
Lime, Hard	1317	1390	SLM 1390 Gas 1390 15 M Exhausted		
Lime, soft, Medium	1390	1400			
Lime	1400	1534			
Red Rock	1534	1570			
Blue Shale	1570	1575			
Lime, Hard	1575	1600			
Slate & Shells	1600	1700			
Sandy Lime	1700	1824			
Slate, Shells	1824	1887			
Sand	1887	1931			
Slate & Shells	1931	2012			
Sand	2012	2098			
Slate & Shells	2098	2142			
Lime	2142	2320			
Slate	2320	2449			
Slate & Shells	2449	2645			
Sandy Lime	2645	3250			
Shale Shells	3250	3315			
Lime, Hard	3315	3600			
Shale Shells	3600	3650			
Lime, Hard	3650	3700			
Gritty Lime	3700	3850			
Shale Shells	3850	3900			

Samples 15 E

~~6185 6314
1294 1294
-4891-5020~~

Samples
Ore 6185-6273
Ore 6273-6339
Helderberg 6329-6352
Sand 6352-6383
Shale 6383-6397 T.D.

WEST VIRGINIA DEPARTMENT OF MINES
OIL & GAS DIVISION
W E L L R E C O R D

Well Abandoned

Permit No. Ral 36
Meadow Creek Quad.
Company
Address
Farm
Location
Well No
District
Surface
Mineral
Commenced
Completed
Date shot
Volume
Fresh Water

Godfrey L. Cabot, Inc.
Charleston, W.Va. 16 22
C. E. Gwinn Acres 13 51
10 737
1 Ser 1115 Elev. 1294 8 1944
Richmond Raleigh County 7 6205

Gas Well Dry
CASING & TUBING

Sept. 14, 1943
April 19, 1944
4-24-44 Depth 6320 to 5340 40 qts.
B.S. 15 MCF A.S. 2 1/2 hrs. 21 MCF
40' H.F.; 60' H.F.; 440' H.F.

Small Gas Show →

Quick Sand	0	50	Gritty Lime	3900	4150
Lime Shale	50	100	Lime, Hard	4150	4290
Red Rock	100	125	Gritty Lime	4290	4320
Lime, Hard	125	140	Lime, Hard	4320	5025
Red Rock	140	200	Slate & Shells	5025	5900
Lime, Hard	200	225	Black Shale	5900	6185
Red Rock	225	230	Corniferous Lime	6185	6314 6273
Shale	230	250	Oriskany Sand	6273-6314	6340 6297
Red Rock	250	280	Lime, Helderberg	6297-6349	6349
Lime	280	290	Sand "	6349	6380
Red Rock	290	320	Lime "	6380	6390
Blue Shale	320	350	TOTAL DEPTH		6397
Lime	350	375	SLM 6330 Gas 6323' 15 M		485
Shale	375	410			
Lime	410	460	ORISKANY SAND ACIDIZED 5-8-44		
Shale	460	485			
Lime, Hard	485	500	Gauge before acidizing 15 MCF		
Shale	500	525	Gauge after acidizing 4 MCF		
Shale, Shells	525	545			
Lime, Hard	545	555			
Shale	555	580			
Lime, Hard	580	620			
Shale	620	690			
Lime, Hard	690	710			
Slate	710	742			
Lime, Very Hard	742	810			
Shale	810	870			
Lime, Hard	870	1118			
Slate	1118	1123			
Lime, Hard	1123	1310			
Sandy Lime	1310	1315			
Red Rock	1315	1317			
Lime, Hard	1317	1390	SLM 1390 Gas 1390 15 M Exhausted		
Lime, soft, Medium	1390	1400			
Lime	1400	1534			
Red Rock	1534	1570			
Blue Shale	1570	1575			
Lime, Hard	1575	1600			
Slate & Shells	1600	1700			
Sandy Lime	1700	1824			
Slate Shells	1824	1887			
Sand	1887	1931			
Slate & Shells	1931	2012			
Sand	2012	2098			
Slate & Shells	2098	2142			
Lime	2142	2320			
Slate	2320	2449			
Slate & Shells	2449	2845			
Sandy Lime	2845	3250			
Shale Shells	3250	3315			
Lime, Hard	3315	3600			
Shale Shells	3600	3650			
Lime, Hard	3650	3700			
Gritty Lime	3700	3850			
Shale Shells	3850	3900			

Samples 15 C

SLM 1390 Gas 1390 15 M Exhausted

6192
1294
-4898
6273
1294
-4979

6185 6314
1294 1294
-4891 -5020

Samples
Oriskany 6185-6273
Orisk 6273-6339
Helderberg 6339-6352
Sand 6352-6383
Charly L m 6383-6397 TD

C. E. GUINN NO. 1 (1115) WELL

Richmond District, Raleigh County, W. Va.

By Godfrey L. Cabot, Inc., Charleston, W. Va.

Located 3.27 mi. S. of 37° 50' and 4.62 mi. W. of 80° 50' - SC - Meadow Creek Quadrangle

Elevation, 1294' L.

Permit Hal-36.

Drilling commenced Sept. 14, 1943; completed April 19, 1944.

Shot Apr. 24, 1944, at 6320-6340', with 40 quarts.

Volume, before shot, 15,000 cu. ft.; 2 1/2 hrs. after shot, 21,000 cu. ft.

Fresh water, 40' hole full; 60' hole full; 440', hole full.

16" casing, 22'; 13", 51'; 10", 737'; 8", 1944'; 7", 6205'.

Oriskany sand acidized May 8, 1944. Gauge before acidizing, 15,000 cu. ft.; gauge after acidizing, 4,000 cu. ft.

Section based in samples from 779 to 3200', 3600 to 5857', and 5890 to 6395', examined by J. H.C. Martens. The Berea Sandstone could not be definitely identified.

Record to RCT from Martens, June 15, 1945.

Top.	Bottom	Thick- ness	
			MAUCH CHURCH GROUP, 960+ FEET from surface)
779	785	6	Shale and siltstone, gray, 90%; gray, partly oolitic limestone, 10%; abundant fragments of marine fossils
785	794	9	Siltstone, gray, sandy, slightly calcareous
794	801	7	Shale, gray, fossiliferous, 60%; gray to brownish fossiliferous limestone, 40%
801	810	9	Limestone, dark-gray
810	878	68	Shale, dark-gray, with a few pyrite concretions
878	890	12	Limestone, gray, with many small specks of pyrite
890	904	14	Shale, gray, highly calcareous and fossiliferous
904	919	15	Shale, gray, to grayish-green, highly calcareous and fossiliferous
919	944	25	Limestone, gray and light-brown, highly fossiliferous, 80%; gray to greenish shale, 20%
944	960	16	Shale, dark-gray, highly calcareous
			GREEN-BRIER LIMESTONE, 663 FEET
960	968	8	Limestone, dark brownish gray
968	1004	36	Limestone, light-gray, 80%; green shaly limestone, 20%
1004	1014	10	Limestone, dark-brown
1014	1032	18	Limestone, light-brown, with indistinct oolites
1032	1063	31	Limestone, brown to gray, oolitic
1063	1084	21	Limestone, brown, with some indistinct oolites
1084	1111	27	Limestone, brown to light-brown, partly oolitic
1111	1145	34	Limestone, brown
1145	1148	3	Limestone, gray, somewhat silty
1148	1156	8	Limestone, light-brown, oolitic
1156	1192	36	Limestone, very light-brown to light-brown
1192	1200	8	Limestone, light-brown; also some gray and green limestone
1200	1207	7	Limestone, light-brown, with some small oolites
1207	1223	16	Limestone, light-brown
1223	1281	58	Limestone, brown
1281	1286	5	Limestone, brown, slightly dolomitic
1286	1303	17	Limestone, brown, oolitic
1303	1311	8	Limestone, brown and grayish-green, partly silty
1311	1319	8	Limestone, light-red
1319	1327	8	Limestone, light-gray, very fine textured
1327	1352	25	Limestone, very light brown to light-gray, with reddish spots

(Continued on page 2)

Top	Bottom	Thickness	Description
1352	1385	33	Limestone, light-brown and light-gray
1385	1395	10	Limestone, white and light-brown, oolitic, partly dolomitic; contains some small transparent quartz crystals (gas, 1390', 15,000 cu. ft.; exhausted)
1395	1428	33	Limestone, light-brown
1428	1446	18	Limestone, light-brown, 90%; light-green limestone, 10%
1446	1451	5	Limestone, light-brown
1451	1461	10	Limestone, very light brown, 85%; light-green limestone, 10%; light-gray and orange chert, 5%.
1461	1472	11	Limestone, brown
1472	1487	15	Limestone, very light brown with reddish specks, 80%; light-green limestone, 15%; light-gray and orange chert, 5%
1487	1492	5	Limestone, very light brown, with a little light-gray chert
1492	1497	5	Limestone, light-gray, with a little gray chert
1497	1523	26	Limestone, gray to light-gray, very fine textured, dolomitic
1523	1532	9	Limestone, grayish-green, very fine textured, highly dolomitic
MACCRADY FORMATION, 52 FEET			
1532	1548	16	Shale, red, dolomitic, 90%; white anhydrite, 10%; at least part of the anhydrite is actually enclosed in the shale rather than occurring in separate layers
1548	1558	10	Shale, red, dolomitic
1558	1568	10	Shale, grayish-green, silty, 90%; red, shale, 10%
1568	1584	16	Siltstone, red and green, slightly dolomitic, containing a few grains of rather coarse sand
POCONO FORMATION AND DEVONIAN SHALES, 4614 FEET			
1584	1599	15	Siltstone, gray, coarse
1599	1613	14	Siltstone, gray to grayish-green, 70%; dark-gray, silty shale, 30%
1613	1623	10	Siltstone, light-gray
1623	1640	17	Siltstone, gray, shaly, 90%; dark-gray shale, 10%
1640	1646	6	Siltstone, light-gray
1646	1693	47	Siltstone and shale, gray; most of the siltstone is fine and shaly
1693	1743	50	Siltstone, light-gray, 90 to 95%; very dark brownish gray shale, 10 to 5%; some of the siltstone is slightly dolomitic
1743	1758	15	Siltstone, light-gray, with brown specks, dolomitic
1758	1783	25	Siltstone, gray, fine
1783	1792	9	Siltstone, light-gray, dolomitic, with a few coarse sand grains
1792	1811	19	Siltstone, gray to light-gray, 80%; very dark gray shale, 20%
1811	1847	36	Shale and siltstone, gray; most of siltstone is fine and shaly; less siltstone toward bottom
1847	1890	43	Shale, dark-gray, partly silty
1890	1915	25	Sandstone, very light gray, mostly fine, with a few coarse quartz grains; coating of white clayey material on many grains
1915	1925	10	Sandstone, nearly white, fine to very fine
1925	1931	6	Sandstone, light-gray, medium-grained, 80%; very dark gray shale, 20%
1931	1962	31	Shale, very dark gray, 70 to 90%; light-gray to greenish very fine sandstone, 30 to 20%
1962	1971	9	Shale, dark-gray, 60%; gray to greenish siltstone and very fine sandstone, 40%; a very little coal

(Continued on page 3)

C. E. GUINN NO. 1 (1115) WELL (CONTINUED)

Top.	Bottom.	Thick- ness	
1971	2006	35	Shale, dark-gray, 70%; light gray and light-green siltstone and very fine sandstone, 30%
2006	2013	7	siltstone, light-gray, sandy, 60%; gray silty shale, 40%
2013	2022	9	siltstone, light-gray, sandy
2022	2037	15	sandstone, light-gray, very fine, 60%; very dark gray shale, 40%
2037	2040	3	sandstone, very light gray, fine, with a few coarser grains, 80%; very dark gray slickensided shale, 20%
2040	2070	30	sandstone, light-gray, very fine, 70%; very dark gray shale, 30% (one sample)
2070	2088	18	Shale, dark-gray, 60%; light-gray, sandy siltstone, 40%
2088	2142	54	Shale, gray to dark-gray, 60 to 80%; coarse, sandy siltstone, 40 to 20%
2142	2199	57	siltstone, gray, shaly, with small amounts of darker gray, silty shale
2199	2230	31	Shale and siltstone, gray
2230	2246	16	siltstone, dark-gray, shaly, with some silty shale
2246	2253	7	siltstone, light-gray
2253	2282	29	siltstone, gray to dark-gray, shaly
2282	2306	24	Shale, dark-gray, very silty
2306	2320	14	Shale, very dark gray
2320	2368	48	Shale, very dark gray, 50 to 60%; gray shale, 50 to 40%
2368	2410	42	Shale and shaly siltstone, gray
2410	2420	10	siltstone, dark-gray and light-gray
2420	2449	29	Shale, gray, partly silty
2449	2514	65	Shale and siltstone, gray
2514	2526	12	siltstone, gray and light-brown
2526	2562	36	Shale, with small amount of gray siltstone
2562	2570	8	siltstone, nearly white, coarse, slightly dolomitic
2570	2612	42	Shale and siltstone, gray
2612	2636	24	Shale, gray to dark-gray, partly silty
2636	2690	54	Shale and siltstone, gray
2690	2761	71	Shale, gray with small amount of gray siltstone
2761	2776	15	Shale, gray, 79 to 80%; gray siltstone, 30 to 20%
2776	2845	69	Shale, gray, with a very little siltstone
2845	3035	190	siltstone, light-gray to white and light-green, 70 to 90%; darker gray shale, 30 to 10%
3035	3042	7	siltstone, dark-gray
3042	3089	47	siltstone, gray to light-gray, fine
3089	3145	56	Shale and siltstone, gray
3145	3167	22	siltstone, light-gray to greenish
3167	3200	33	siltstone, gray, with small amount of gray shale
3200	3600	400	No samples
3600	3630	30	Shale, dark-gray, 50%; gray siltstone, 50%
3630	3670	40	Shale, dark-gray; a little nearly black shale and a little lighter gray siltstone
3670	3694	24	siltstone, gray, shaly, 60%; gray to dark-gray shale, 40%
3694	3717	23	Shale, dark-gray to nearly black, with small amount of lighter gray siltstone
3717	3731	14	Shale, dark-gray, 50%; gray siltstone, 50%
3731	3761	30	Shale and fine siltstone, gray to dark-gray, 70%; black shale, 30%
3761	3794	33	Shale and fine siltstone, gray; some of shale is very dark
3794	3804	10	Shale and siltstone, gray, 80%; very dark gray shale, 20%
3804	3939	135	Shale, gray with small amounts of gray siltstone and very dark gray shale

(Continued on page 4)

C. R. GUINN NO. 1 (1115) WELL (CONCLUDED)

Top.	Bottom.	Thick- ness	
3939	3977	38	Shale, dark-gray to very dark-gray
3977	4175	198	Shale, gray to very dark gray, 70%; gray shaly siltstone, 30%
4175	4287	112	Shale, gray to very dark gray, with small amount of gray siltstone
4287	4687	400	Shale and fine siltstone, gray
4687	4962	275	Shale, dark-gray to very dark gray (only three samples)
4962	5007	45	Shale, dark-gray
5007	5067	60	Shale, very dark gray to black; a little yellow dolomite in small veins
5067	5347	80	Shale, dark-gray, 60%; very dark gray to black shale, 40%
5347	5287	140	Shale, very dark gray to black; small amount of lighter gray shale and siltstone
5287	5890	630	No samples
5890	6107	217	Shale, very dark gray to black; a few fragments of vein calcite in several samples
6107	6171	64	No samples
6171	6185	14	Shale, black, with white calcite veins (gas at 6171')
6185	6198	13	Shale, very dark gray to black, highly calcareous; may include some impure limestone
			MURKERSVILLE CHERT, 75 FEET
6198	6218	20	Chert, very dark gray, highly calcareous and slightly dolomitic
6218	6224	6	Chert, dark-gray and white, calcareous
6224	6235	11	Chert, dark-gray, calcareous and silty; contains a little glauconite; also small amount of rather pure light-gray chert
6235	6250	15	Chert, dark-gray, very silty; contains some dolomite and glauconite
6250	6259	9	Chert, dark-gray, slightly calcareous
6259	6273	14	Chert, gray, calcareous
			ORISKANY SANDSTONE, 66 FEET
6273	6278	5	Sandstone, light-gray, fine, calcareous
6278	6297	19	Sandstone, gray, fine, highly calcareous and fossiliferous
6297	6307	10	Limestone, light-gray, sandy, fossiliferous
6307	6339	32	Sandstone, very light gray, fine, highly calcareous, fossiliferous
			HELDRETH GROUP, 56+ FEET
6339	6352	13	Limestone, gray, fossiliferous, cherty
6352	6383	31	Sandstone, very light gray, fine to very fine
6383	6390	7	Limestone, gray, sandy, fossiliferous, slightly cherty
6390	6395	5	Limestone, gray, slightly cherty
	6397		Total depth

C. E. GUINN NO. 1 (1115) WELL

Richmond District, Raleigh County, W. Va.

By Godfrey L. Cabot, Inc., Charleston, W. Va.

Located 3.27 mi. S. of 37° 50' and 4.62 mi. W. of 80° 50' - SC - Meadow Creek Quadrangle

Elevation, 1294' L.

Permit Bal-36.

Drilling commenced Sept. 14, 1943; completed April 19, 1944.

Shot Apr. 24, 1944, at 6320-6340', with 40 quarts.

Volume, before shot, 15,000 cu. ft.; 2 1/2 hrs. after shot, 21,000 cu. ft.

Fresh water, 40' hole full; 60', hole full; 440', hole full.

16" casing, 22'; 13", 51'; 10", 737'; 8", 1944'; 7", 6205'.

Oriskany sand acidized May 8, 1944. Gauge before acidizing, 15,000 cu. ft.; gauge after acidizing, 4,000 cu. ft.

Section based in samples from 779 to 3200', 3600 to 5887', and 5890 to 6395', examined by J. H.C. Martens. The Berea Sandstone could not be definitely identified.

Record to RCT from Martens, June 15, 1945.

Top.	Bottom	Thick- ness	
			MAUCH CHUNK GROUP, 960+ FEET from surface)
779	785	6	Shale and siltstone, gray, 90%; gray, partly oolitic limestone, 10%; abundant fragments of marine fossils
785	794	9	Siltstone, gray, sandy, slightly calcareous
794	801	7	Shale, gray, fossiliferous, 60%; gray to brownish fossiliferous limestone, 40%
801	810	9	Limestone, dark-gray
810	878	68	Shale, dark-gray, with a few pyrite concretions
878	890	12	Limestone, gray, with many small specks of pyrite
890	904	14	Shale, gray, highly calcareous and fossiliferous
904	919	15	Shale, gray, to grayish-green, highly calcareous and fossiliferous
919	944	25	Limestone, gray and light-brown, highly fossiliferous, 80%; gray to greenish shale, 20%
944	960	16	Shale, dark-gray, highly calcareous
			GREENBRIER LIMESTONE, 663 FEET
960	968	8	Limestone, dark brownish gray
968	1004	36	Limestone, light-gray, 80%; green shaly limestone, 20%
1004	1014	10	Limestone, dark-brown
1014	1032	18	Limestone, light-brown, with indistinct oolites
1032	1063	31	Limestone, brown to gray, Oolitic
1063	1084	21	Limestone, brown, with some indistinct oolites
1084	1111	27	Limestone, brown to light-brown, partly colitic
1111	1145	34	Limestone, brown
1145	1148	3	Limestone, gray, somewhat silty
1148	1156	8	Limestone, light-brown, colitic
1156	1192	36	Limestone, very light-brown to light-brown
1192	1200	8	Limestone, light-brown; also some gray and green limestone
1200	1207	7	Limestone, light-brown, with some small oolites
1207	1223	16	Limestone, light-brown
1223	1281	58	Limestone, brown
1281	1286	5	Limestone, brown, slightly dolomitic
1286	1303	17	Limestone, brown, colitic
1303	1311	8	Limestone, brown and grayish-green, partly silty
1311	1319	8	Limestone, light-red
1319	1327	8	Limestone, light-gray, very fine textured
1327	1352	25	Limestone, very light brown to light-gray, with reddish spots

(Continued on page 2)

Top	Bottom	Thick- ness	
1352	1385	33	Limestone, light-brown and light-gray
1385	1395	10	Limestone, white and light-brown, colitic, partly dolomitic; contains some small transparent quartz crystals (gas, 1390', 15,000 cu. ft.; exhausted)
1395	1428	33	Limestone, light-brown
1428	1446	18	Limestone, light-brown, 90%; light-green limestone, 10%
1446	1451	5	Limestone, light-brown
1451	1461	10	Limestone, very light brown, 85%; light-green limestone, 10%; light-gray and orange chert, 5%.
1461	1472	11	Limestone, brown
1472	1487	15	Limestone, very light brown with reddish specks, 80%; light-green limestone, 15%; light-gray and orange chert, 5%
1487	1492	5	Limestone, very light brown, with a little light-gray chert
1492	1497	5	Limestone, light-gray, with a little gray chert
1497	1523	26	Limestone, gray to light-gray, very fine textured, dolomitic
1523	1532	9	Limestone, grayish-green, very fine textured, highly dolomitic
MACCRADY FORMATION, 52 FEET			
1532	1548	16	Shale, red, dolomitic, 90%; white anhydrite, 10%; at least part of the anhydrite is actually enclosed in the shale rather than occurring in separate layers
1548	1558	10	Shale, red, dolomitic
1558	1568	10	Shale, grayish-green, silty, 90%; red, shale, 10%
1568	1584	16	Siltstone, red and green, slightly dolomitic, containing a few grains of rather coarse sand
POCONO FORMATION AND DEVONIAN SHALES, 4614 FEET			
1584	1599	15	Siltstone, gray, coarse
1599	1613	14	Siltstone, gray to grayish-green, 70%; dark-gray, silty shale, 30%
1613	1623	10	Siltstone, light-gray
1623	1640	17	Siltstone, gray, shaly, 90%; dark-gray shale, 10%
1640	1646	6	Siltstone, light-gray
1646	1693	47	Siltstone and shale, gray; most of the siltstone is fine and shaly
1693	1743	50	Siltstone, light-gray, 90 to 95%; very dark brownish gray shale, 10 to 5%; some of the siltstone is slightly dolomitic
1743	1758	15	Siltstone, light-gray, with brown specks, dolomitic
1758	1783	25	Siltstone, gray, fine
1783	1792	9	Siltstone, light-gray, dolomitic, with a few coarse sand grains
1792	1811	19	Siltstone, gray to light-gray, 80%; very dark gray shale, 20%
1811	1847	36	Shale and siltstone, gray; most of siltstone is fine and shaly; less siltstone toward bottom
1847	1890	43	Shale, dark-gray, partly silty
1890	1915	25	Sandstone, very light gray, mostly fine, with a few coarse quartz grains; coating of white clayey material on many grains
1915	1925	10	Sandstone, nearly white, fine to very fine
1925	1931	6	Sandstone, light-gray, medium-grained, 80%; very dark gray shale, 20%
1931	1962	31	Shale, very dark gray, 70 to 90%; light-gray to greenish very fine sandstone, 30 to 20%
1962	1971	9	Shale, dark-gray, 60%; gray to greenish siltstone and very fine sandstone, 40%; a very little coal

(Continued on page 3)

C. E. GUIDA NO. 1 (1115) WELL (CONTINUED)

Top.	Bottom.	Thick- ness	
1971	2006	35	Shale, dark-gray, 70%; light gray and light-green siltstone and very fine sandstone, 30%
2006	2013	7	Siltstone, light-gray, sandy, 60%; gray silty shale, 40%
2013	2022	9	Siltstone, light-gray, sandy
2022	2037	15	Sandstone, light-gray, very fine, 60%; very dark gray shale, 40%
2037	2040	3	Sandstone, very light gray, fine, with a few coarser grains, 80%; very dark gray slickensided shale, 20%
2040	2070	30	Sandstone, light-gray, very fine, 70%; very dark gray shale, 30% (one sample)
2070	2088	18	Shale, dark-gray, 60%; light-gray, sandy siltstone, 40%
2088	2142	54	Shale, gray to dark-gray, 60 to 80%; coarse, sandy siltstone, 40 to 20%
2142	2199	57	Siltstone, gray, shaly, with small amounts of darker gray, silty shale
2199	2230	31	Shale and siltstone, gray
2230	2246	16	Siltstone, dark-gray, shaly, with some silty shale
2246	2253	7	Siltstone, light-gray
2253	2282	29	Siltstone, gray to dark-gray, shaly
2282	2306	24	Shale, dark-gray, very silty
2306	2320	14	Shale, very dark gray
2320	2368	48	Shale, very dark gray, 50 to 60%; gray shale, 50 to 40%
2368	2410	42	Shale and shaly siltstone, gray
2410	2420	10	Siltstone, dark-gray and light-gray
2420	2449	29	Shale, gray, partly silty
2449	2514	65	Shale and siltstone, gray
2514	2526	12	Siltstone, gray and light-brown
2526	2562	36	Shale, with small amount of gray siltstone
2562	2570	8	Siltstone, nearly white, coarse, slightly dolomitic
2570	2612	42	Shale and siltstone, gray
2612	2636	24	Shale, gray to dark-gray, partly silty
2636	2690	54	Shale and siltstone, gray
2690	2761	71	Shale, gray with small amount of gray siltstone
2761	2796	35	Shale, gray, 79 to 80%; gray siltstone, 30 to 20%
2796	2845	49	Shale, gray, with a very little siltstone
2845	3035	190	Siltstone, light-gray to white and light-green, 70 to 90%; darker gray shale, 30 to 10%
3035	3042	7	Siltstone, dark-gray
3042	3089	47	Siltstone, gray to light-gray, fine
3089	3145	56	Shale and siltstone, gray
3145	3167	22	Siltstone, light-gray to greenish
3167	3200	33	Siltstone, gray, with small amount of gray shale
3200	3600	400	No samples
3600	3630	30	Shale, dark-gray, 50%; gray siltstone, 50%
3630	3670	40	Shale, dark-gray; a little nearly black shale and a little lighter gray siltstone
3670	3694	24	Siltstone, gray, shaly, 60%; gray to dark-gray shale, 40%
3694	3717	23	Shale, dark-gray to nearly black, with small amount of lighter gray siltstone
3717	3731	14	Shale, dark-gray, 50%; gray siltstone, 50%
3731	3761	30	Shale and fine siltstone, gray to dark-gray, 70%; black shale, 30%
3761	3794	33	Shale and fine siltstone, gray; some of shale is very dark
3794	3804	10	Shale and siltstone, gray, 80%; very dark gray shale, 20%
3804	3939	135	Shale, gray with small amounts of gray siltstone and very dark gray shale

(Continued on page 4)

C. R. QUINN NO. 1 (1115) WELL (CONCLUDED)

Top.	Bottom.	Thick- ness	
3939	3977	38	Shale, dark-gray to very dark-gray
3977	4175	198	Shale, gray to very dark gray, 70%; gray shaly siltstone, 30%
4175	4287	112	Shale, gray to very dark gray, with small amount of gray siltstone
4287	4687	400	Shale and fine siltstone, gray
4687	4962	275	Shale, dark-gray to very dark gray (only three samples)
4962	5007	45	Shale, dark-gray
5007	5067	60	Shale, very dark gray to black; a little yellow dolomite in small veins
5067	5147	80	Shale, dark-gray, 60%; very dark gray to black shale, 40%
5147	5287	140	Shale, very dark gray to black; small amount of lighter gray shale and siltstone
5287	5890	630	No samples
5890	6107	217	Shale, very dark gray to black; a few fragments of vein calcite in several samples
6107	6171	64	No samples
6171	6185	14	Shale, black, with white calcite veins (gas at 6171')
6185	6198	13	Shale, very dark gray to black, highly calcareous; may include some impure limestone
HUNTERSVILLE CHERT, 75 FEET			
6198	6218	20	Chert, very dark gray, highly calcareous and slightly dolomitic
6218	6224	6	Chert, dark-gray and white, calcareous
6224	6235	11	Chert, dark-gray, calcareous and silty; contains a little glauconite; also small amount of rather pure light-gray chert
6235	6250	15	Chert, dark-gray, very silty; contains some dolomite and glauconite
6250	6259	9	Chert, dark-gray, slightly calcareous
6259	6273	14	Chert, gray, calcareous
ORISKANY SANDSTONE, 66 FEET			
6273	6278	5	Sandstone, light-gray, fine, calcareous
6278	6297	19	Sandstone, gray, fine, highly calcareous and fossiliferous
6297	6307	10	Limestone, light-gray, sandy, fossiliferous
6307	6339	32	Sandstone, very light gray, fine, highly calcareous, fossiliferous
HELDREBERG GROUP, 56+ FEET			
6339	6352	13	Limestone, gray, fossiliferous, cherty
6352	6383	31	Sandstone, very light gray, fine to very fine
6383	6390	7	Limestone, gray, sandy, fossiliferous, slightly cherty
6390	6395	5	Limestone, gray, slightly cherty
	6397		Total depth

6339
 1294

 5045

4) 121,000
3,150

from the desk of _____

_____ Paul H. Price

1 List under Mississippi

* Maxton
little lime

Greenbrier

* Big lime

Upper Devonian

* Keener, ~~Byington~~, Spear Bank

* Berea

* Klett

* Devonian Shale

* Huntsville - Cornsensus

* Oriskany

Legend - usual

⊗ Gas Well

* Gas Show

○ Dry Hole

Well Record - G.C. 1115 - Raleigh 30

General Geologic Column
Eastern Raleigh County

Vertical scale

PERMIT

Mauley Creek

960

Greenbrier

6663

1532'

McCradley Formation

1584'

Roanoke and

Devonian

4614

6198'

Hunterdon shale

75'

6273'

Christman Sandstone

64

6339'

Helderberg

56'

Maxton

Littlehoney

Limestone light gray to brown

Limestone - Union - oolitic

Limestone - gray - brownish -

Limestone - some chert dolomitic

McCradley Formation - shale red - gray - green

Keener - Big Trujin - square bones

Well Sandstones - Gas Production

Marcellus shale - dark gray to black

Hunterdon shale - dark gray to light - some

Christman Sandstone - Glendonville

Helderberg Limestone

Silurian

Newburg

Keener - Big Six

Tuscarora - Clinton

CAMBRO-ORDOVICIAN L¹ & D¹

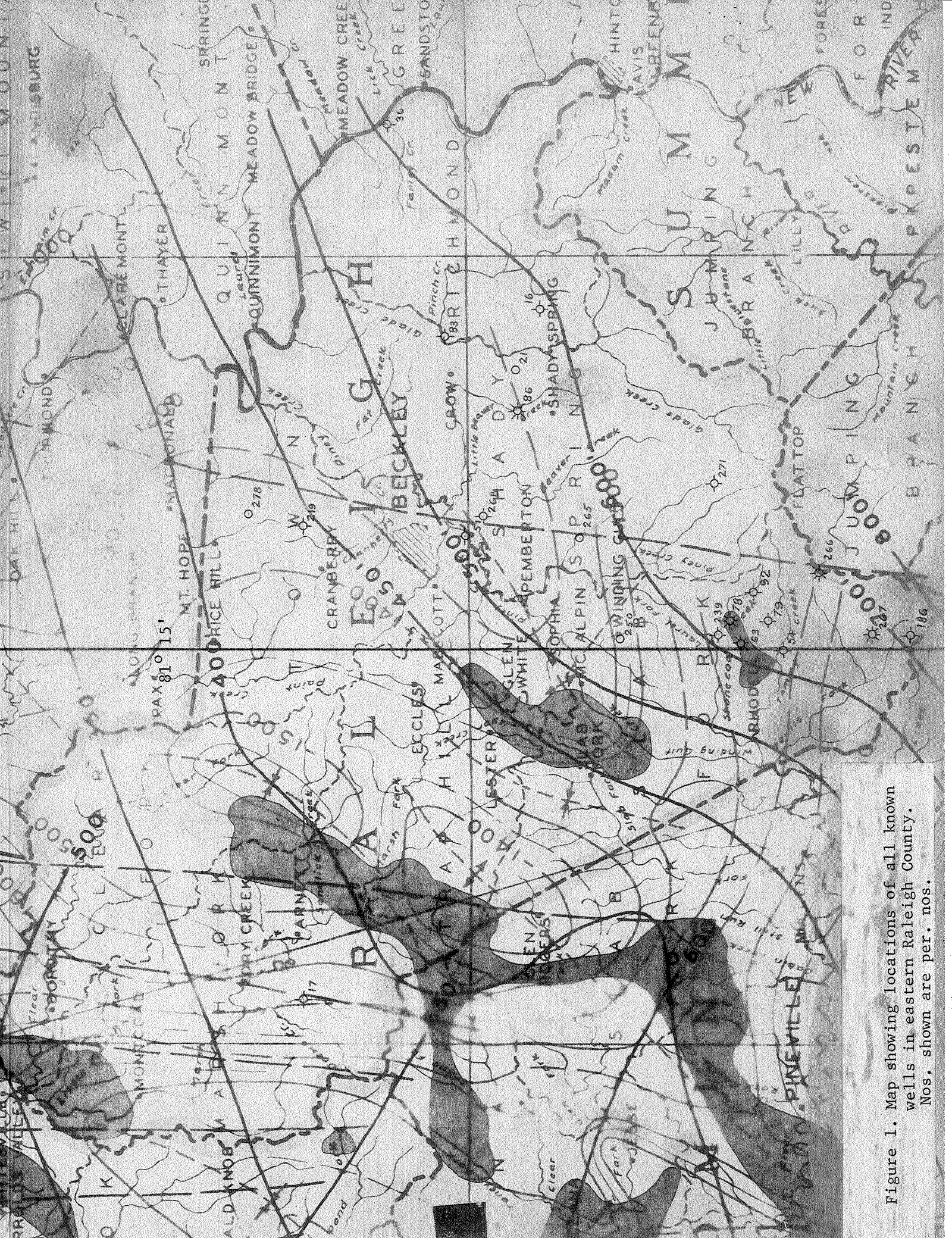


Figure 1. Map showing locations of all known wells in eastern Raleigh County. Nos. shown are per. nos.