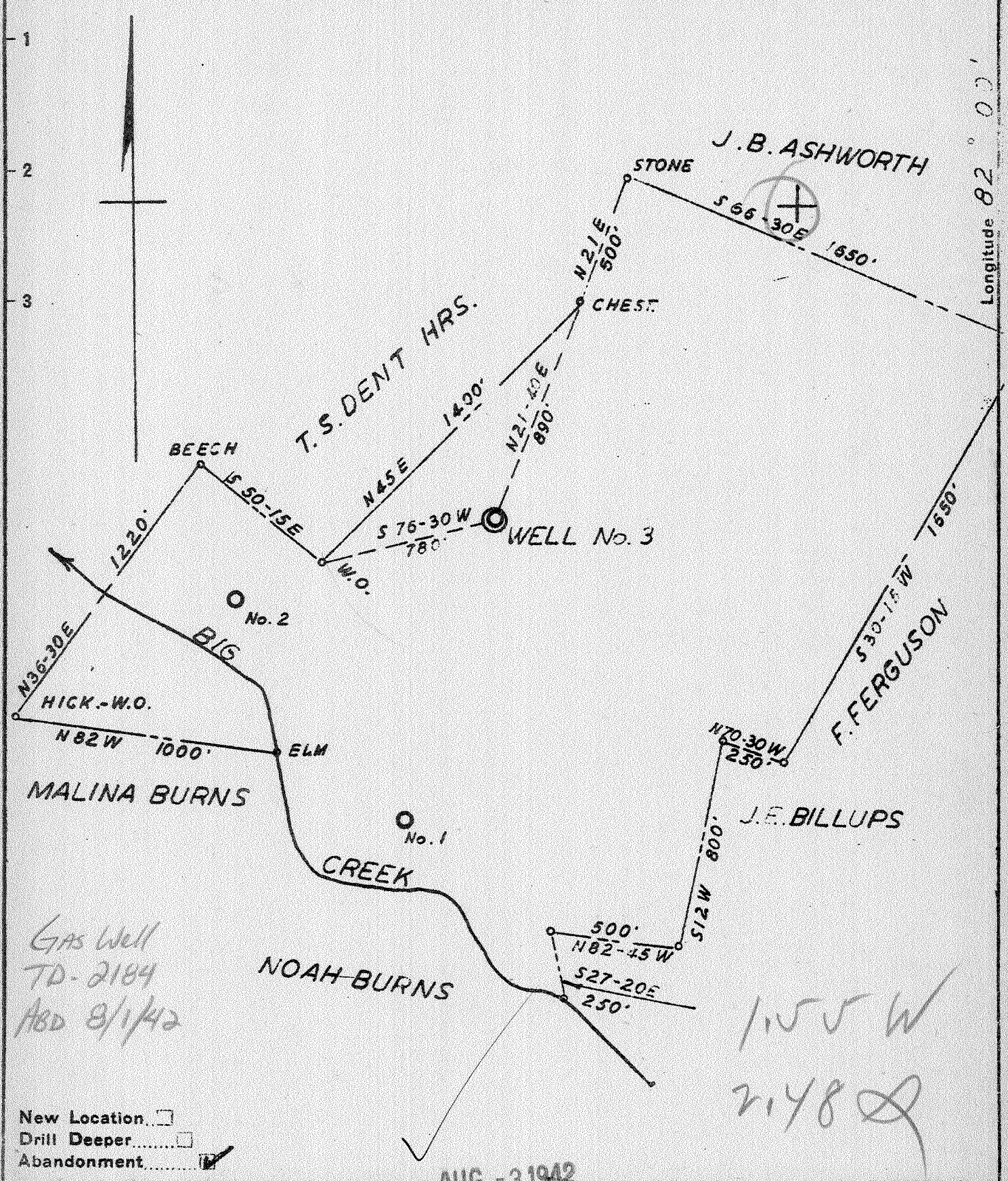


Latitude 38 20

Longitude 82 00



New Location
 Drill Deeper
 Abandonment

AUG - 3 1942

Company SOVEREIGN GAS CO.
 Address BOX 424 HUNTINGTON WVA
 Farm J. M. ROBERTS
 Tract 1 Acres 140 Lease No. 1
 Well (Farm) No. 3 Serial No. 132
 Elevation (Spirit Level) 880
 Quadrangle MILTON
 County PUTNAM District CURRY
 Engineer S.V. HAWORTH
 Engineer's Registration No. 224
 File No. _____ Drawing No. _____
 Date 7-17-42 Scale 1" = 500'

STATE OF WEST VIRGINIA
 DEPARTMENT OF MINES
 OIL AND GAS DIVISION
 CHARLESTON

WELL LOCATION MAP
 FILE NO. PUT-56-A

+ Denotes location of well on United States Topographic Maps, scale 1 to 62,500, latitude and longitude lines being represented by border lines as shown.

- Denotes one inch spaces on border line of original tracing.