

0 1 2 3

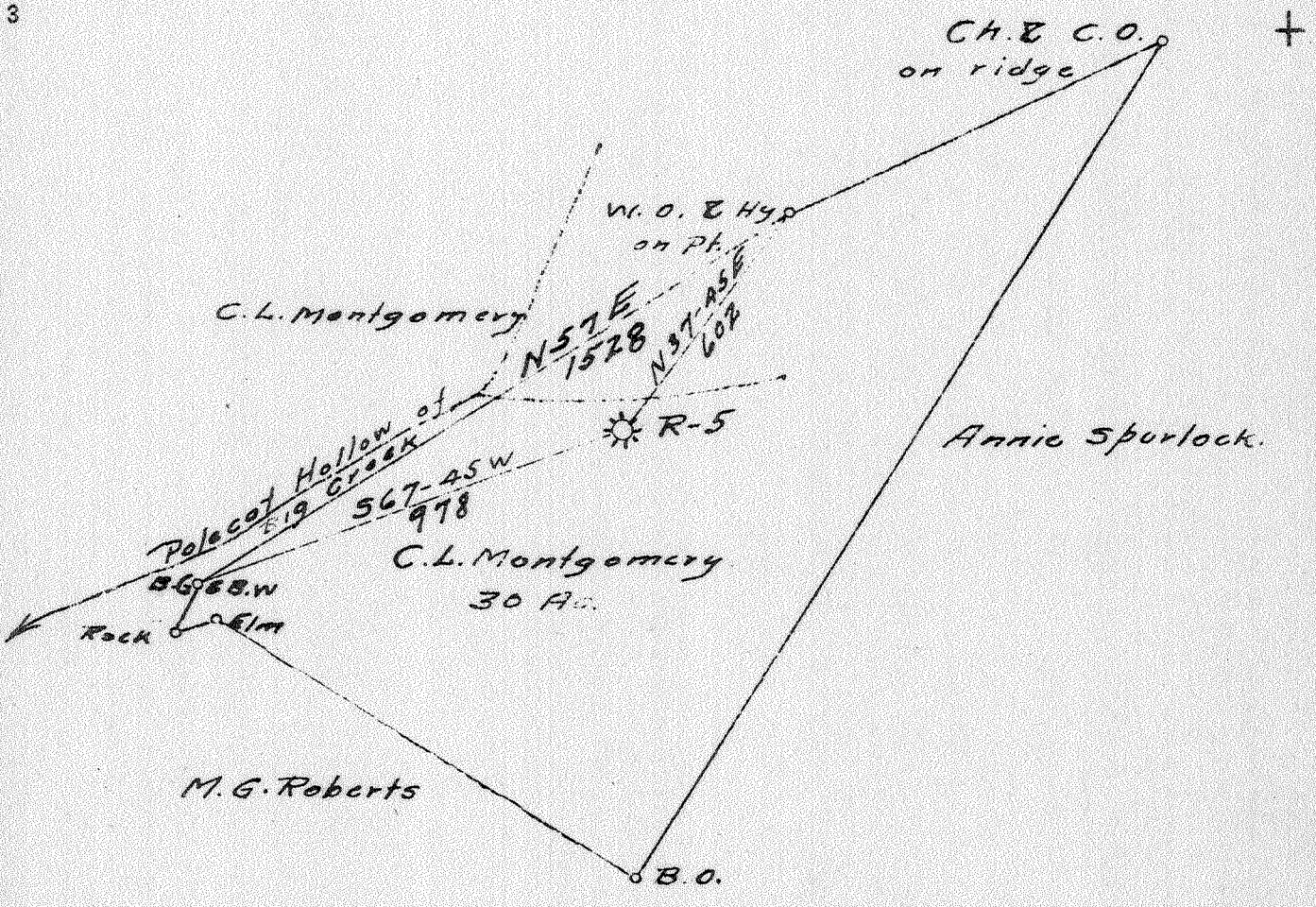
Latitude 38 20

1

2

3

Longitude 82 00'



W - .42
S - 3.27

TD 2221
PLUGGED (ABANDONED) 12-13-40
Abandonment Loc. - Permit Issued: 9-24-40

Company HAMILTON GAS CORP.
 Address Charleston, W. Va.
 Farm C.L. Montgomery
 Tract 1 Acres 30 Lease No. L.W.P.6
 Well (Farm) No. 1 Serial No. R-5
 Elevation (Spirit Level) 823.8
 Quadrangle Milton
 County Putnam District Curry
 Engineer Townsel Combs
 Engineer's Registration No. WV-46
 File No. _____ Drawing No. _____
 Date June 21 1940 Scale 1" = 400'

STATE OF WEST VIRGINIA
 DEPARTMENT OF MINES
 OIL AND GAS DIVISION
 CHARLESTON

WELL LOCATION MAP
 FILE NO. PUT-53A

+ Denotes location of well on United States Topographic Maps, scale 1 to 62,500, latitude and longitude lines being represented by border lines as shown.
 - Denotes one inch spaces on border line of original tracing.