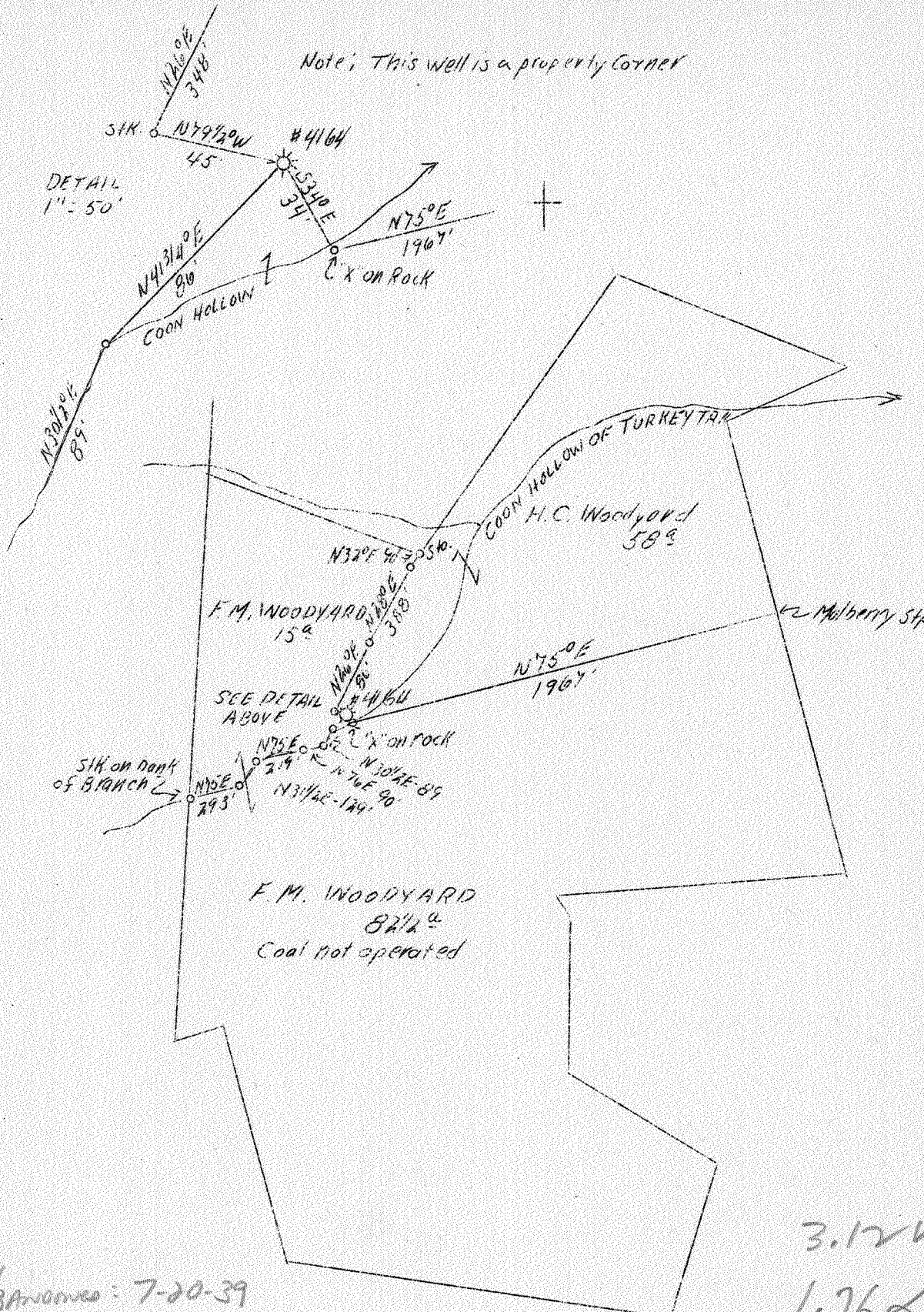


LATITUDE 38° 20'

LONGITUDE 81° 55'

Note: This well is a property corner



Abandoned: 7-20-39

3.12 W
1.76 Q

ABD. - Permit Issued: 7-8-39 JUL 17 1939

Company	United Fuel Gas Co.
Address	Charleston, W. Va.
Farm	F. M. Woodyard
Acres	97.5
Lease No.	30370
Well (Farm) No.	1
Serial No.	4164
Elevation	728 - Barometer
Quadrangle	St. Albans
County	Putnam
District	Curry
Engineer	G. A. Cunningham
Eng. Reg. No.	659
File No.	42-55
Date	July 7, 1939
Scale	1" - 660'

STATE OF WEST VIRGINIA
 Department of Mines
 OIL & GAS DIVISION
 Charleston

WELL LOCATION MAP

File No. PUT-52-A

x Denotes location of well on U. S. Topographic Maps, scale 1 to 62,500, latitude and longitude lines being represented by border lines as shown.

- Denotes one inch spaces on border line of original tracing.

Curry District, Putnam County, W. Va.
Holley Oil and Development Co. (No. 2).
Turkey Creek field.

S 2 A

On 300 acres.

Elevation, 730'.

Drilling commenced, Jan. 4, 1909; completed, Jan. 22, 1909.

Contractor, L. G. Davis.

Drillers: Paren Stewart and Jess Bennett.

8" casing, 153'.

8" packer, set at 856'.

	Top.	Bottom.
Little Dunkard Sand	135	- 150
Slate	150	- 195
Big Dunkard Sand	195	- 245
Coal	245	- 248
Slate	248	- 275
Sand	275	- 400
Slate	400	- 405
Sand	405	- 420
Slate	420	- 450
Sand	450	- 480
Slate	480	- 600
Sand	600	- 610
Slate	610	- 620
Sand	620	- 650
Slate	650	- 730
Sand	730	- 745
Black shale	745	- 795
Lime	795	- 805
Sand shell (with little gas)	805	- 815
Slate	815	- 830
Salt Sand (with gas; more gas, 844')	830	- 856
Total depth		856

STATE OF WEST VIRGINIA
DEPARTMENT OF MINES
OIL AND GAS DIVISION

99

WELL RECORD

Aband
52+A
of Atlanta, W

Permit No. _____ Oil or Gas Well GAS
(Kind)

Company United Fuel Gas Company
Address Charleston, W. Va.
Farm F. M. Woodyard Acres 97.5
Location (waters) Coon Hollow of Turkey Creek
Well No. 4164 Elev. 728
District Curry County Putnam
The surface of tract is owned in fee by F.M. Woodyard
Address Hurricane, W.Va.
Mineral rights are owned by Same
Address _____
Drilling commenced January 4, 1909
Drilling completed " 22, 1909
Date shot _____ Depth of shot _____
Open Flow _____ /10ths Water in _____ Inch
_____ /10ths Merc. in _____ Inch
Volume Gas Well _____ Cu. Ft.
Rock Pressure _____ lbs. _____ hrs.
Oil _____ bbls., 1st 24 hrs.
Fresh water _____ feet _____ feet
Salt water _____ feet _____ feet

Casing and Tubing	Used in Drilling	Left in Well	Packers
Size			Kind of Packer
16			
13			
10			Size of
8 1/4	153	153	
6 5/8			Depth set
5 3/16			
3			Perf. top
2	856	856	Perf. bottom
Liners Used			Perf. top
			Perf. bottom

CASING CEMENTED _____ SIZE _____ No. FT. _____ Date _____
COAL WAS ENCOUNTERED AT 245 FEET 36 INCHES
_____ FEET _____ INCHES _____ FEET _____ INCHES
_____ FEET _____ INCHES _____ FEET _____ INCHES

Formation	Color	Hard or Soft	Top	Bottom	Oil Gas or Water	Depth Found	Remarks
Little Dundard			135	150			
Slate			150	195			
Big Dundard			195	245			
Coal			245	248			
Slate			248	275			
Sand			275	400			
Slate			400	405			
Sand			405	420			
Slate			420	450			
Sand			450	480			
Slate			480	600			
Sand			600	601			
Slate			610	620			
Sand			620	650			
Slate			650	730			
Sand			730	745			
Black Shale			745	795			
Lime			795	805			
Sand Shell			805	815	With little gas		
Slate			815	830			
Salt Sand			830	856	With gas 844 more gas bottom hole		
Total Depth				856		856	

