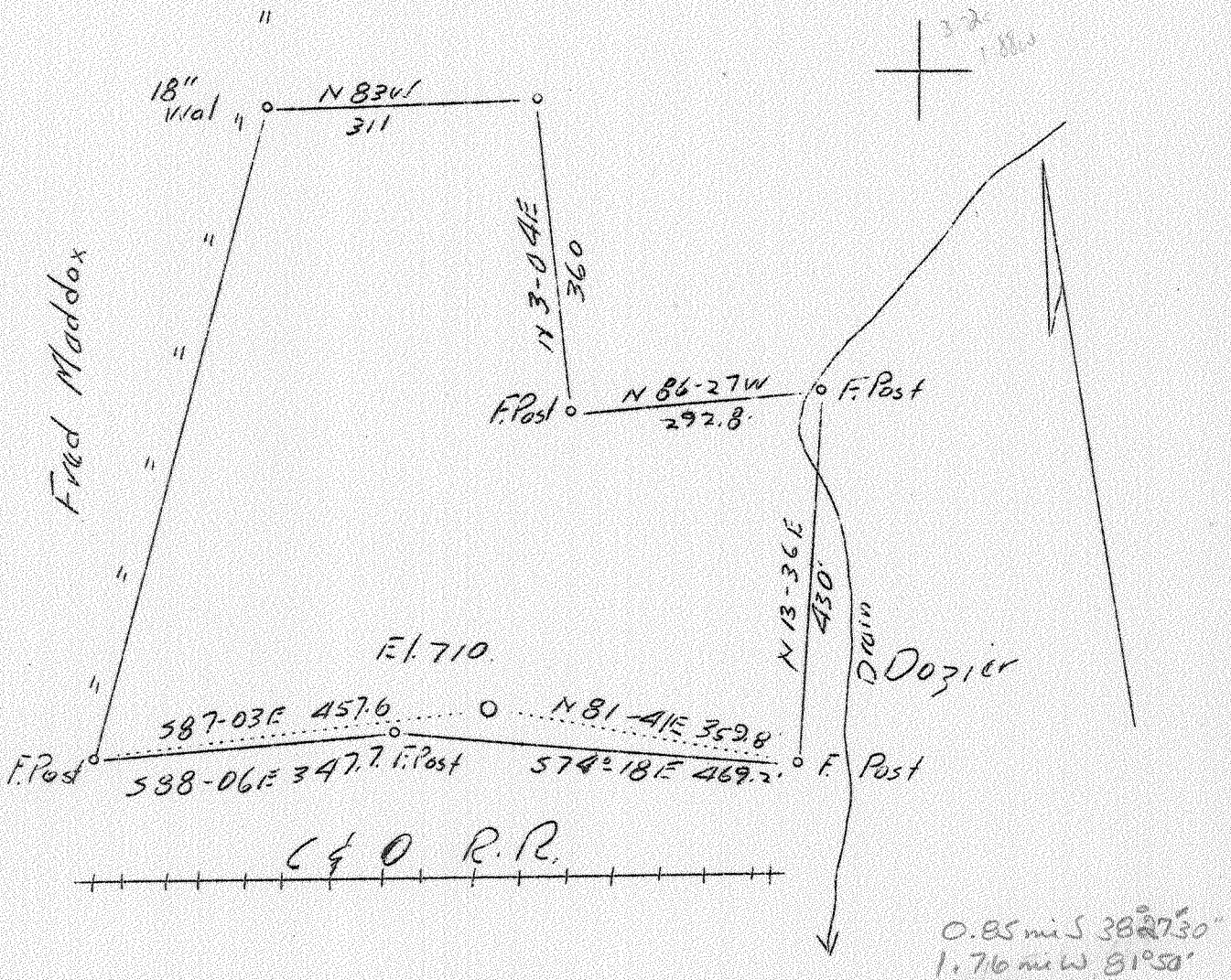


LATITUDE 38° 27'

LONGITUDE 81° 52'

John Maddox



Abcl.

Company	Smith Oil & Gas Co.
Address	Hurricane, W.Va.
Farm	Elias Maddox Heirs
Tract	1 Acres 9 Lease No.
Well (Farm) No.	1 Serial No.
Elevation (Spirit Level):	710'
Quadrangle	St. Albans <i>Abcl.</i>
County	Putnam District Scott
Engineer	J.S. Miller
Engineer's Registration No.	
File No.	Drawing No.
Date	Sept. 1, 1937 Scale 1"-200'

STATE OF WEST VIRGINIA
 Department of Mines
 OIL AND GAS DIVISION
 CHARLESTON

WELL LOCATION MAP

File No. PUT-49A

+ Denotes location of well on United States Topographic Maps, scale 1 to 62,500, latitude and longitude lines being represented by border lines as shown.

— Denotes one inch spaces on border line of original tracing.

6-6 Scott- Depot (212)