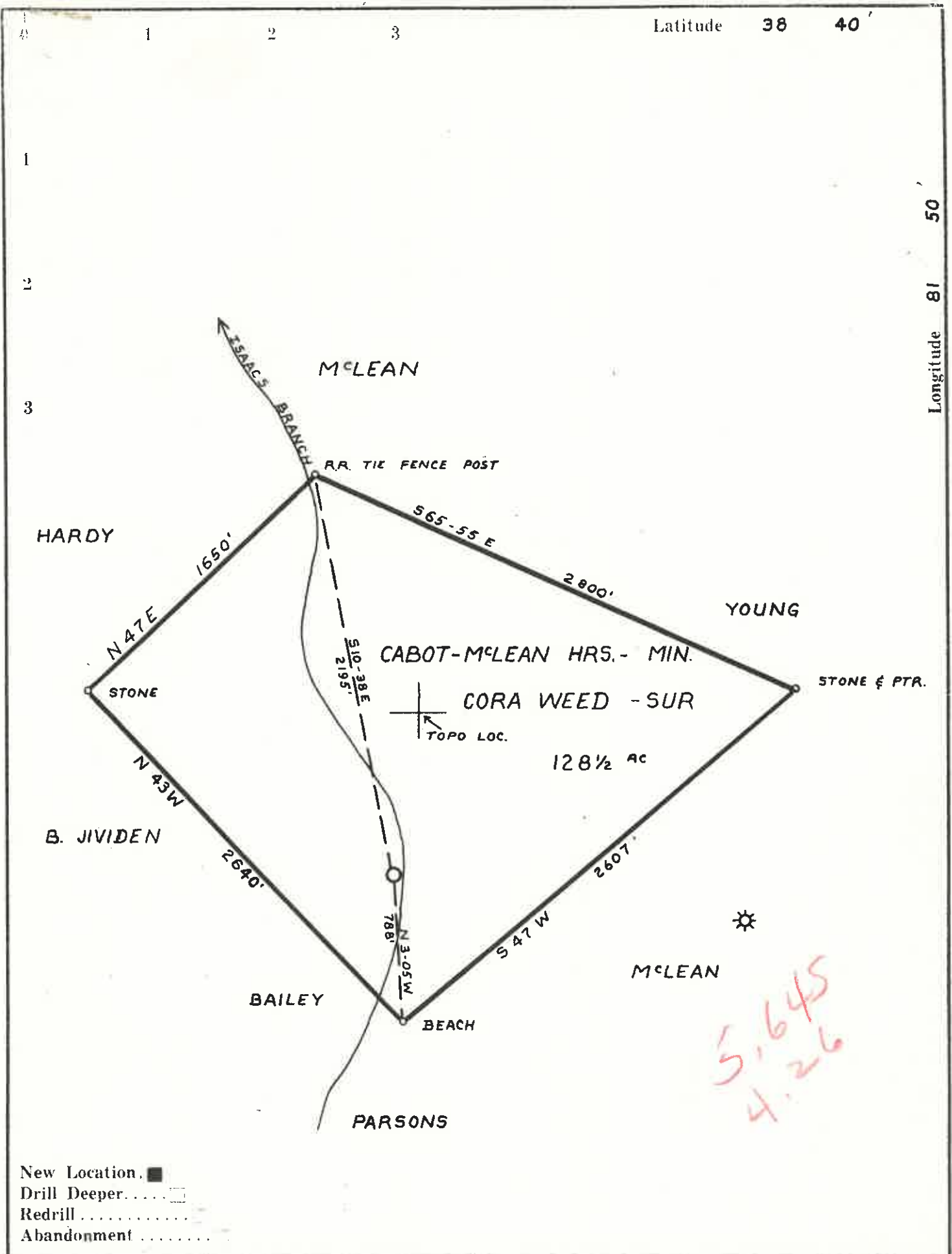


m

P



New Location. ■  
 Drill Deeper. □  
 Redrill. □  
 Abandonment. □

Company SPARTAN GAS CO.  
 Address P.O. BOX 766 CHARLESTON  
 Farm CABOT - MC LEAN HRS.  
 Tract \_\_\_\_\_ Acres PT. 907 Lease No. \_\_\_\_\_  
 Well (Farm) No. ONE Serial No. S - III  
 Elevation (Spirit Level) 671.57  
 Quadrangle WINFIELD - c  
 County PUTNAM District BUFFALO  
 Engineer William T. Zibold  
 Engineer's Registration No. 2471  
 File No. \_\_\_\_\_ Drawing No. \_\_\_\_\_  
 Date AUG. 29, 1961 Scale 1" = 660'

STATE OF WEST VIRGINIA  
 DEPARTMENT OF MINES  
 OIL AND GAS DIVISION  
 CHARLESTON

**WELL LOCATION MAP**  
 FILE NO. PUT-680

— Denotes location of well on United States Topographic Maps, scale 1 to 62,500, latitude and longitude lines being represented by border lines as shown.  
 - - Denotes one inch spaces on border line of original tracing.

1-6 279



STATE OF WEST VIRGINIA  
DEPARTMENT OF MINES  
OIL AND GAS DIVISION 9

Quadrangle WINFIELD

Permit No. PUT-680

**WELL RECORD**

Oil or Gas Well Gas

Company Spartan Gas Company  
Address P.O. Box 766 - Charleston, W. Va.  
Farm Cabot-McLean Mineral Acres Pt. of 907  
Location (waters) Isaacs Branch  
Well No. One - S-111 Elev. 671.57  
District Buffalo County Putnam  
The surface of tract is owned in fee by Cora Weed  
Address Huntington, W. Va.  
Mineral rights are owned by 1/2 Cabot Corp. 1/2 J. L. McLean Hrs.  
Address Charleston, W. Va.  
Drilling commenced September 28, 1961  
Drilling completed December 1, 1961  
Date Shot 12/5/61 From 3383 To 3933  
With 5600# 5 x 16 Independent Gel.  
Open Flow 14/10ths Water in 1 Inch  
/10ths Merc. in  Inch  
Volume 40 M. Cu. Ft.  
Rock Pressure 540 lbs. 5 days hrs.  
Oil None bbls., 1st 24 hrs.  
WELL ACIDIZED No  
WELL FRACTURED No

| Casing and Tubing              | Used in Drilling | Left in Well | Packers                  |
|--------------------------------|------------------|--------------|--------------------------|
| Size                           |                  |              | Kind of Packer           |
| 16                             |                  |              | <u>None</u>              |
| 13                             | <u>31'</u>       | <u>31'</u>   | Size of                  |
| 10                             | <u>189'</u>      | <u>None</u>  | Depth set                |
| 8 1/4                          | <u>773'</u>      | <u>None</u>  | Perf. top <u>3853</u>    |
| <del>3 1/2</del> <u>7" 22#</u> | <u>2379'</u>     | <u>2379'</u> | Perf. bottom <u>3859</u> |
| 5 3/16                         |                  |              | Perf. top <u>3760</u>    |
| 3                              |                  |              | Perf. bottom <u>3791</u> |
| 2                              | <u>3859'</u>     | <u>3859'</u> |                          |
| Liners Used                    |                  |              |                          |
| <u>5 1/2"</u>                  | <u>595'</u>      | <u>595'</u>  |                          |

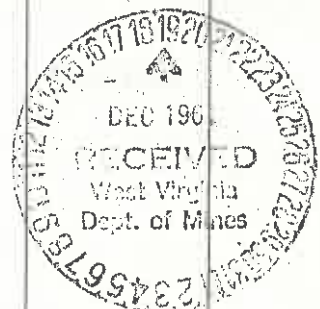
CASING CEMENTED No SIZE  No. Ft.  Date   
COAL WAS ENCOUNTERED AT None FEET  INCHES  
 FEET  INCHES  FEET  INCHES  
 FEET  INCHES  FEET  INCHES

RESULT AFTER TREATMENT 7/10 W 2" - 112 M.

ROCK PRESSURE AFTER TREATMENT 540# - 5 Days

Fresh Water  Feet  Salt Water  Feet

| Formation        | Color | Hard or Soft | Top | Bottom | Oil, Gas or Water | Depth   | Remarks |
|------------------|-------|--------------|-----|--------|-------------------|---------|---------|
| Sand & Gravel    |       |              | 0   | 10     |                   |         |         |
| Sand             |       |              | 10  | 40     |                   |         |         |
| Red Rock         |       |              | 40  | 47     |                   |         |         |
| Slate & Red Rock |       |              | 47  | 115    |                   |         |         |
| Sand             |       |              | 115 | 123    |                   |         |         |
| Red Rock         |       |              | 123 | 135    |                   |         |         |
| Slate & Shells   |       |              | 135 | 162    |                   |         |         |
| Red Rock         |       |              | 162 | 175    |                   |         |         |
| Slate            |       |              | 175 | 192    |                   |         |         |
| Red Rock         |       |              | 192 | 217    |                   |         |         |
| Slate & Shells   |       |              | 217 | 230    |                   |         |         |
| Red Rock         |       |              | 230 | 242    |                   |         |         |
| Sand             |       |              | 242 | 265    |                   |         |         |
| Slate & Shells   |       |              | 265 | 350    |                   |         |         |
| Red Rock         |       |              | 350 | 360    |                   |         |         |
| Sand             |       |              | 360 | 375    |                   |         |         |
| Slate & Shells   |       |              | 375 | 385    |                   |         |         |
| Red Rock         |       |              | 385 | 420    |                   |         |         |
| Slate & Red Rock |       |              | 420 | 454    |                   |         |         |
| Sand             |       |              | 454 | 480    |                   |         |         |
| Slate & Red Rock |       |              | 480 | 525    |                   |         |         |
| Sand             |       |              | 525 | 560    |                   |         |         |
| Slate & Shells   |       |              | 560 | 575    |                   |         |         |
| Red Rock         |       |              | 575 | 600    |                   |         |         |
| Slate & Shells   |       |              | 600 | 660    |                   |         |         |
| Red Rock         |       |              | 660 | 673    |                   |         |         |
| Sand             |       |              | 673 | 775    | Water             | 700-730 | 2 BPH   |
| Slate            |       |              | 775 | 790    |                   |         |         |
| Sand             |       |              | 790 | 850    | Water             | 790-810 | 1 BPH   |



| Formation      | Color   | Hard or Soft                 | Top 9 | Bottom | Oil, Gas or Water | Depth Found  | Remarks        |
|----------------|---------|------------------------------|-------|--------|-------------------|--------------|----------------|
| Sand - Broken  |         |                              | 850   | 1010   |                   |              |                |
| Sand           |         |                              | 1010  | 1050   |                   |              |                |
| Slate & Shells |         |                              | 1050  | 1095   |                   |              |                |
| Sand           |         |                              | 1095  | 1134   |                   |              |                |
| Slate          |         |                              | 1134  | 1162   |                   |              |                |
| Sand - Broken  |         |                              | 1162  | 1265   |                   |              |                |
| Slate          |         |                              | 1265  | 1456   |                   |              |                |
| Sand           |         |                              | 1456  | 1476   |                   |              |                |
| Slate          |         |                              | 1476  | 1485   |                   |              |                |
| Sand           |         |                              | 1485  | 1500   |                   |              |                |
| Slate & Shells |         |                              | 1500  | 1530   |                   |              |                |
| Sand           |         |                              | 1530  | 1619   | Water             | 1550-1560    | H.F.           |
| Slate & Shells |         |                              | 1619  | 1645   |                   |              |                |
| Little Lime    |         |                              | 1645  | 1667   |                   |              |                |
| Slate          |         |                              | 1667  | 1670   |                   |              |                |
| Big Lime       |         |                              | 1670  | 1855   |                   |              |                |
| Slate          |         |                              | 1855  | 1865   |                   |              |                |
| Injun Sand     |         |                              | 1865  | 1911   |                   |              |                |
| Slate & Shells |         |                              | 1911  | 2330   |                   |              |                |
| Shale          |         |                              | 2330  | 2347   |                   |              |                |
| Berea Sand     |         |                              | 2347  | 2368   |                   |              |                |
| Slate & Shells |         |                              | 2368  | 3517   |                   |              |                |
| Brown Shale    |         |                              | 3517  | 3632   |                   |              |                |
| Slate & Shells |         |                              | 3632  | 3712   |                   |              |                |
| Brown Shale    |         |                              | 3712  | 3800   |                   |              |                |
| Slate          |         |                              | 3800  | 3824   |                   |              |                |
| Brown Shale    |         |                              | 3824  | 3900   |                   |              |                |
| Slate          |         |                              | 3900  | 3933   |                   |              |                |
| Total Depth    |         |                              |       | 3933   | Gas               | 3437-50      | 8/10 W 1/8" FM |
|                |         |                              |       |        | Gas               | 3457-87      | 8/10 "         |
|                |         |                              |       |        | Gas               | 3666-80      | 5/10 W 1/4 FM  |
|                |         |                              |       |        | Gas               | 3695-3703    | 5/10 "         |
|                |         |                              |       |        | Gas               | 3703-14      | 2/10 W 1/2 FM  |
|                |         |                              |       |        | Gas               | 3714-29      | 6/10 W 1"      |
|                |         |                              |       |        |                   | Decreased to | 14/10 W 1"     |
|                |         |                              |       |        |                   | Before Shot  |                |
|                |         |                              |       |        | 1 Hour A.S.       | - 9/10 M 2"  | - 467 M.       |
|                |         |                              |       |        | 29 Hours A.S.     | 7/10 W 2"    | - 112 M.       |
|                | 10/5/61 | Ran 8" Casing at 773'        |       |        |                   |              |                |
|                |         | 10 Bags Aquagel behind pipe. |       |        |                   |              |                |
|                |         | Circulation & returns.       |       |        |                   |              |                |
|                |         | Well Service, Inc.           |       |        |                   |              |                |
|                | 11/9/61 | Ran 7" Casing at 2379'       |       |        |                   |              |                |
|                |         | 15 Bags Aquagel behind pipe. |       |        |                   |              |                |
|                |         | Circulation & returns.       |       |        |                   |              |                |
|                |         | Well Service, Inc.           |       |        |                   |              |                |

Date December 18, 1961

APPROVED SPARTAN GAS COMPANY, Owner  
 By [Signature] Engineer  
 (Title)