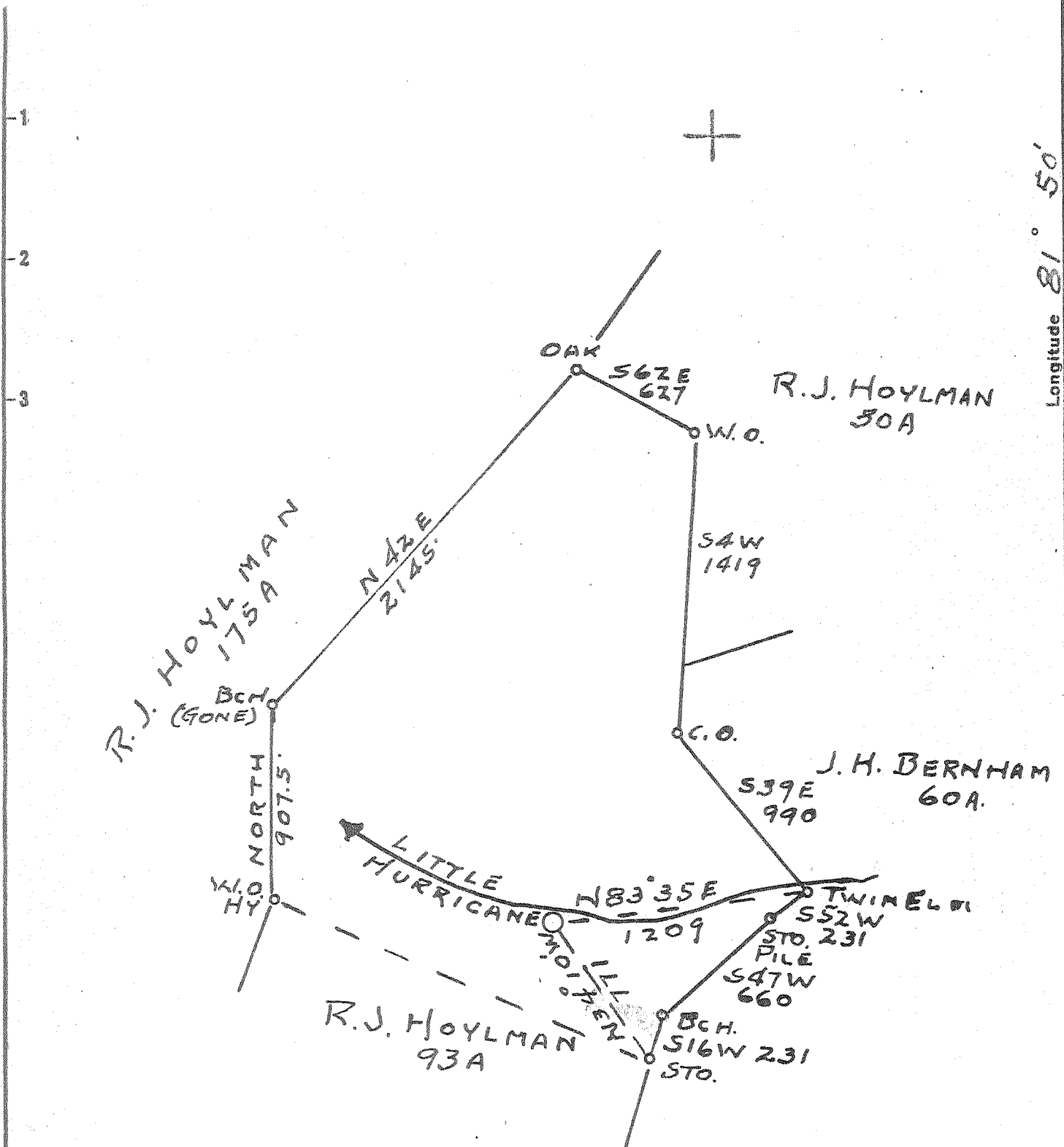


Latitude 38° 30'

Longitude 81° 50'



1,305.
 2.50 W.
 2 NC (J-4)

New Location...
 Drill Deeper.....
 Abandonment.....

Company TEAVEE OIL & GAS
 Address CHARLESTON, W.VA
 Farm R.J. HOYLMAN
 Tract _____ Acres 2.30 Lease No. _____
 Well (Farm) No. 1 Serial No. _____
 Elevation (Spirit Level) 627 GR.
 Quadrangle ST. ALBANS - NC
 County PUTNAM District SCOTT
 Engineer JOHN GALPIN
 Engineer's Registration No. 875
 File No. _____ Drawing No. _____
 Date 7-14-55 Scale 1" = 660'

STATE OF WEST VIRGINIA
 DEPARTMENT OF MINES
 OIL AND GAS DIVISION
 CHARLESTON

WELL LOCATION MAP
 FILE NO. Put-580

+ Denotes location of well on United States Topographic Maps, scale 1 to 62,500, latitude and longitude lines being represented by border lines as shown.

- Denotes one inch spaces on border line of original tracing.

6-6-212 Deep Well ✓



STATE OF WEST VIRGINIA
DEPARTMENT OF MINES
OIL AND GAS DIVISION 10

Quadrangle St. Albans

WELL RECORD

Permit No. PUT-580

Oil or Gas Well Gas

Company TEAVEE OIL AND GAS, INC.
Address Charleston, W. Va.
Farm R. J. HOYLMAN Acres 230
Location (waters) Little Hurricane
Well No. 1 Elev. 627 gr.
District Scott County Putnam
The surface of tract is owned in fee by R. J. Hoylman
Address _____
Mineral rights are owned by R. J. Hoylman
Address _____

Drilling commenced July 7, 1955
Drilling completed December 7, 1955
Date Shot 12/10/55 From 4370 To 3300
With 9400# TX and 80% Gel.

Open Flow /10ths Water in Inch
/10ths Merc. in Inch
Volume 300,000 2 Hr. A.S. Cu. Ft.
Rock Pressure not taken lbs. hrs.
Oil none bbls., 1st 24 hrs.
Fresh water feet feet
Salt water feet feet

| Casing and Tubing | Used in Drilling | Left in Well | Packers |
|-------------------|------------------|--------------|----------------|
| Size | | | Kind of Packer |
| 16 | 22 | 22 | |
| 13 | 164 | 164 | None |
| 10 | 665 | Pulled | Size of |
| 8 1/4 | 1420 | Pulled | |
| 6 5/8 | 1789 | 1789 | Depth set |
| 5 3/16 | | | |
| 3 | | | Perf. top |
| 2 | | | Perf. bottom |
| Liners Used | | | Perf. top |
| | | | Perf. bottom |

CASING CEMENTED _____ SIZE _____ No. Ft. _____ Date _____
COAL WAS ENCOUNTERED AT _____ FEET _____ INCHES
_____ FEET _____ INCHES FEET _____ INCHES
_____ FEET _____ INCHES FEET _____ INCHES

| Formation | Color | Hard or Soft | Top | Bottom | Oil, Gas or Water | Depth Found | Remarks |
|----------------|-------|--------------|------|--------|--------------------------|---------------|---------|
| Surface | | | 0 | 1 | | | |
| Sand | | | 1 | 16 | | | |
| Red Rock | | | 16 | 65 | Water 15' | | |
| Sand | | | 65 | 70 | Water 68' | | |
| Blue Rock | | | 70 | 95 | | | |
| Red Rock | | | 95 | 112 | | | |
| Blue Rock | | | 112 | 130 | | | |
| Coal | | | 130 | 133 | | | |
| Slate | | | 133 | 190 | | | |
| Red Rock | | | 190 | 215 | | | |
| Slate | | | 215 | 227 | | | |
| Coal | | | 227 | 231 | | | |
| Slate | | | 231 | 276 | | | |
| Coal | | | 276 | 277 | | | |
| Slate | | | 277 | 378 | | | |
| Sand | | | 378 | 398 | | | |
| Slate | | | 398 | 435 | | | |
| Sand | | | 435 | 442 | Salt water 1 bl. per hr. | | |
| Slate | | | 442 | 500 | | | |
| Sand | | | 500 | 610 | | | |
| Black Lime | | | 610 | 630 | | | |
| Slate | | | 630 | 650 | | | |
| Coal | | | 650 | 655 | | | |
| Slate | | | 655 | 670 | | | |
| Sand | | | 670 | 700 | | | |
| Slate & Shells | | | 700 | 798 | | | |
| Sand | | | 798 | 860 | | | |
| Slate & Shells | | | 860 | 945 | | | |
| Broken Sand | | | 945 | 995 | | | |
| Salt Sand | | | 995 | 1046 | Water 1016 | 2 bl. per hr. | |
| Black Slate | | | 1046 | 1080 | | | |
| Salt Sand | | | 1080 | 1359 | | | |
| Lime | | | 1359 | 1395 | Hole full water 1180' | | |
| Pencil Cave | | | 1395 | 1398 | 1398' S.L.M. | 8-3-55 | |



| Formation | Color | Hard or Soft | Top 10 | Bottom | Oil, Gas or Water | Depth Found | Remarks |
|------------------|-------|--------------|--------|--------|--------------------|-------------|-----------|
| <u>CONTINUED</u> | | | | | | | |
| Big Line | | | 1398 | 1571 | xxxxxxx | | |
| Slate & Shells | | | 1571 | 1620 | Gas | 1458 | |
| Injun Sand | | | 1620 | 1660 | | | |
| Slate & Shells | | | 1660 | 2053 | | | |
| Coffee Shale | | | 2053 | 2070 | Gas | 2066' | Smell |
| Berea Grit | | | 2070 | 2094 | | 2078' | 4/10 w 1" |
| Slate & Shells | | | 2094 | 3285 | Brown Shale | 3285' | SLM |
| Brown Shale | | | 3285 | 3370 | Show of Gas | at 3520' | |
| Slate & Shells | | | 3370 | 3400 | | | |
| Brown Shale | | | 3400 | 3725 | | | |
| Slate & Shells | | | 3725 | 4083 | | | |
| Marcellium | | | 4083 | 4259 | | | |
| Cornif. Lims | | | 4259 | 4356 | | | |
| Oriskany | | | 4356 | 4375 | | | |
| Line | | | 4375 | | | | |
| | | | | | 4269 | 4356 | |
| | | | | | 627 | 627 | |
| | | | | | 3642 | 3729 | |

Date 1-30, 1928

APPROVED James C. [unclear], Owner

By [unclear] (Title)