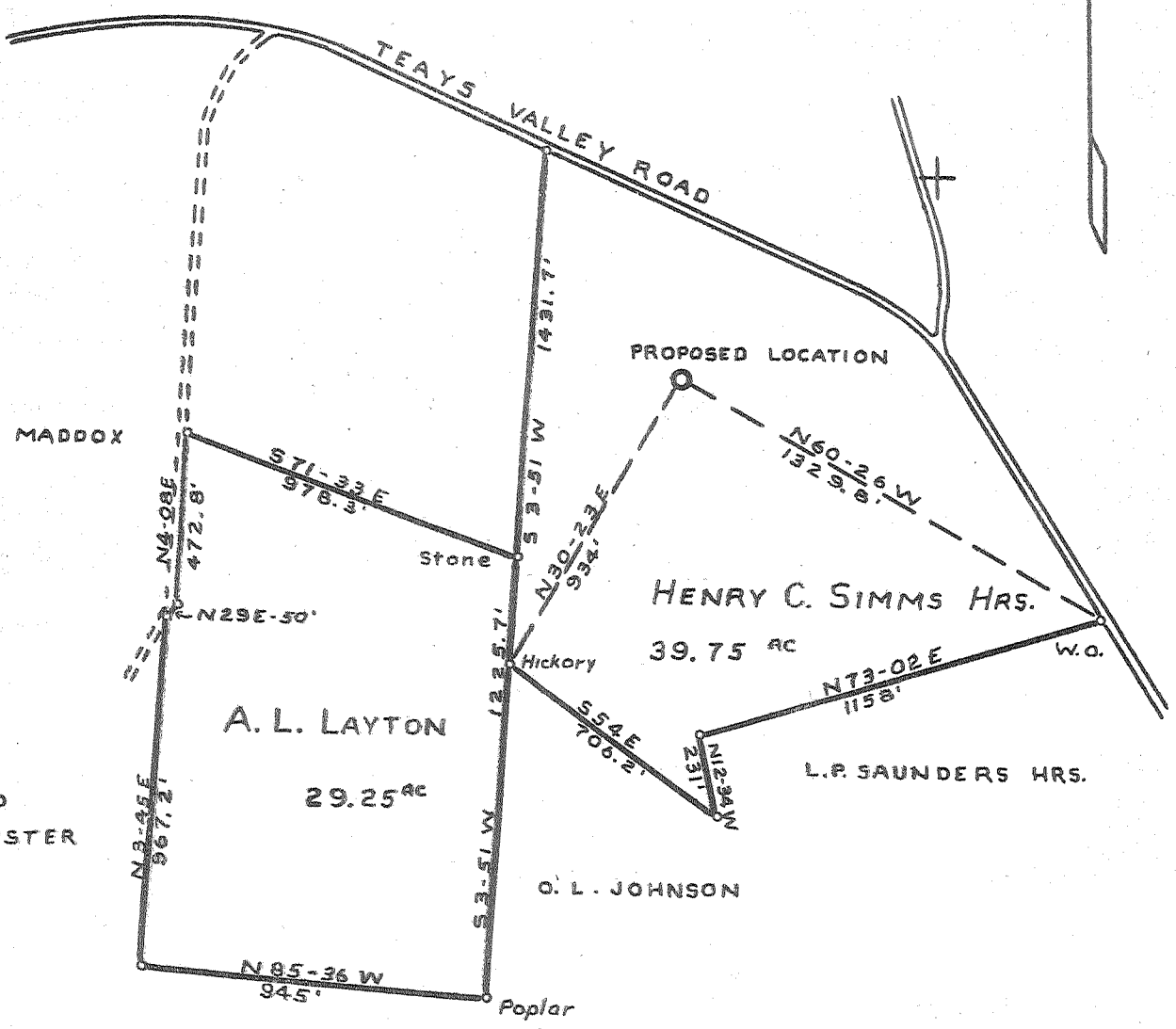


4
1 2 3

Latitude 38° 30'

Longitude 81° 50'



3.39 S.
1.59 W.

2 C (J-4)

New Location
 Drill Deeper
 Abandonment

Company SPARTAN GAS COMPANY
 Address BOX 766 CHARLESTON, W. VA.
 Farm LAYTON - SIMMS UNIT
 Tract 2 Acres 69.0 Lease No. _____
 Well (Farm) No. ONE Serial No. S-99
 Elevation (Spirit Level) 687.61
 Quadrangle SAINT ALBANS - NC
 County PUTNAM District SCOTT
 Engineer William T. Zibold
 Engineer's Registration No. 2471
 File No. _____ Drawing No. _____
 Date 5-12-55 Scale 1" = 500'

STATE OF WEST VIRGINIA
 DEPARTMENT OF MINES
 OIL AND GAS DIVISION
 CHARLESTON

WELL LOCATION MAP
 FILE NO. Put-574

+ Denotes location of well on United States Topographic Maps, scale 1 to 62,500, latitude and longitude lines being represented by border lines as shown.
 - Denotes one inch spaces on border line of original tracing.

6-0 212 Deep Well



STATE OF WEST VIRGINIA
DEPARTMENT OF MINES
OIL AND GAS DIVISION 7

QUADRANGLE - ST. ALBANS

WELL RECORD

Permit No. Put - 574

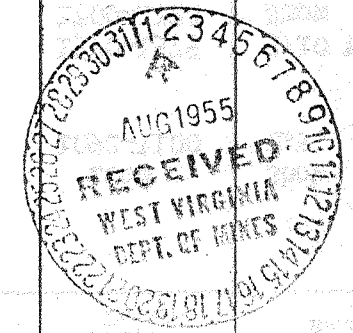
Oil or Gas Well Gas
(KIND)

Company Spartan Gas Company
Address 518 Kanawha Valley Bldg., Chas., W. Va.
Farm A. L. Layton - Simms Unit Acres 69
Location (waters) Big Scary Creek
Well No. 1 - S-99 Elev. 687.61
District Scott County Putnam
The surface of tract is owned in fee by A. L. Layton,
and others Address Nitro, W. Va.
Mineral rights are owned by A. L. Layton and
others Address Nitro, W. Va.
Drilling commenced May 18, 1955
Drilling completed June 30, 1955
Date Shot 7-5-55 From 3842 To 3265
With 6000 lbs. D.P. Gelatin
Open Flow 12 /10ths Water in 2 Inch
 /10ths Merc. in Inch
Volume 146,000 Cu. Ft.
Rock Pressure 695 lbs. 96 hrs.
Oil None bbls., 1st 24 hrs.
Fresh water feet feet
Salt water 1092 feet feet

Casing and Tubing	Used in Drilling	Left in Well	Packers
Size			Kind of Packer <u>None</u>
16			
18	<u>32' 8"</u>	<u>32' 8"</u>	
10	<u>353' 6"</u>	<u>Pulled</u>	Size of <u> </u>
8 1/4	<u>1493' 5"</u>	<u>Pulled</u>	
6 3/4	<u>2165'</u>	<u>2165'</u>	Depth set <u> </u>
5 3/16			
3			Perf. top <u>3720</u>
2		<u>3774'</u>	Perf. bottom <u>3770</u>
Liners Used	<u>None</u>		Perf. top <u> </u>
			Perf. bottom <u> </u>

CASING CEMENTED 7" SIZE No. Ft. 6-11-55 Date
12 Bags Cement - By Well Service, Inc.
COAL WAS ENCOUNTERED AT None FEET INCHES
 FEET INCHES FEET INCHES
 FEET INCHES FEET INCHES

Formation	Color	Hard or Soft	Top	Bottom	Oil, Gas or Water	Depth Found	Remarks
Sand & Gravel			0	15			
Sand			15	18			
Slate			18	21			
Red Rock			21	32			
Slate			32	36			
Sand			36	75			
Red Rock			75	104			
Slate			104	120			
Sand			120	150			
Red Rock			150	158			
Slate			158	168			
Red Rock			168	176			
Slate			176	207			
Red Rock			207	227			
Slate			227	240			
Red Rock			240	265			
Slate			265	300			
Sand			300	316			
Slate			316	323			
Red Rock			323	330			
Slate			330	360			
Sand			360	385			
Slate			385	400			
Sand			400	455			
Slate			455	460			
Broken Sand			460	495			
Slate			495	508			
Sand			508	535			
Broken Sand			535	551			
Sand			551	575			
Slate			575	600			
Sand			600	725			
Slate			725	740			
Sand			740	765			
Broken Sand			765	793			
Slate			793	865			
Sand			865	890			
Broken Sand			890	915			
Slate			915	950			



Formation	Color	Hard or Soft	Top 7	Bottom	Oil, Gas or Water	Depth Found	Remarks
Sand			950	1031			
Slate			1031	1038			
Sand			1038	1197			
Slate			1197	1209	Gas	1066	Show
Sand			1209	1478	Water	1092-1100	H.F.
Little Lime			1478	1497			
Big Lime			1497	1667			
Sand			1667	1735	Gas	1570-1575	3/10 W 2"
Slate & Sand			1735	1760	Oil	1700-1720	Show
Slate			1760	1850			
Weir Shells			1850	1935			
Slate			1935	2142			
Shale			2142	2165			
Sand - Berea			2165	2187			
Slate & Shells			2187	3355			
Brown Shale			3355	3408			
Slate & Shells			3408	3535			
Shale & Slate			3535	3560			
Brown Shale			3560	3670			
Slate			3670	3692			
Brown Shale			3692	3795			
Slate			3795	3843			
TOTAL DEPTH				3843			

Brown Shale Gas Guaged Before Shot - 8/10 W 1"

WELL RECORD

Date July 28, 1915

APPROVED SPARTAN GAS COMPANY, Owner



STATE OF WEST VIRGINIA
DEPARTMENT OF MINES
OIL AND GAS DIVISION

QUADRANGLE - St. Albans
Permit No. PUT - 574-D

WELL RECORD

Drill Deeper Dry
Oil or Gas Well Gas
(KIND)

Company Spartan Gas Company
Address 518 Kanawha Valley Bldg - Chas., W. Va.
Farm Layton-Simms Unit Acres 69
Location (waters) Big Scary Creek
Well No. 1 - S-99 Elev. 687.61
District Scott County Putnam
The surface of tract is owned in fee by McCallister, et al
Address Winfield, W. Va.
Mineral rights are owned by A. L. Layton, et al
Address Nitro, W. Va.
Drilling commenced October 4, 1958
Drilling completed October 30, 1958
Date Shot _____ From _____ To _____
With Not Shot
Open Flow 20 /10ths Water in 1 Inch
_____ /10ths Merc. in _____ Inch
Volume 47 M. Cu. Ft.
Rock Pressure Not Taken lbs. _____ hrs.
Oil _____ bbls., 1st 24 hrs.
Fresh water _____ feet _____ feet
Salt water _____ feet _____ feet

Casing and Tubing	Used in Drilling	Left in Well	Packers
Size			
16			Kind of Packer
13			
10			Size of
8 1/4			
6 5/8			Depth set
5 3/16 Liner		68 1/2	
3			Perf. top
2			Perf. bottom
Liners Used			Perf. top
			Perf. bottom

CASING CEMENTED _____ SIZE _____ No. Ft. _____ Date _____
COAL WAS ENCOUNTERED AT _____ FEET _____ INCHES
_____ FEET _____ INCHES _____ FEET _____ INCHES
_____ FEET _____ INCHES _____ FEET _____ INCHES

Formation	Color	Hard or Soft	Top	Bottom	Oil, Gas or Water	Depth Found	Remarks
	Cleaned out to old Total Depth of 3843'						
	Set 5 1/2" Perforated Liner 3843 - 3158'						
	Commenced New Hole In Slate at 3843'						
Slate			3795	3918		4382	4465
Black Shale			3918 - 1/2	3935		688	684
Slate			3935	4178			
Black Shale			4178 - 4 1/2	4382		3694	3777
Lime			4382	4465			
Sand			4465	4481			
Lime			4481	-			
Total Depth				4497			
	Plugged back per verbal approval Dept. of Mines 10/30/58						
	Filled with gravel		4497 to	4450			
	Neat Cement Plug		4450	4440			
	Shut-In 11/1/58 in 7" Casing.						

