

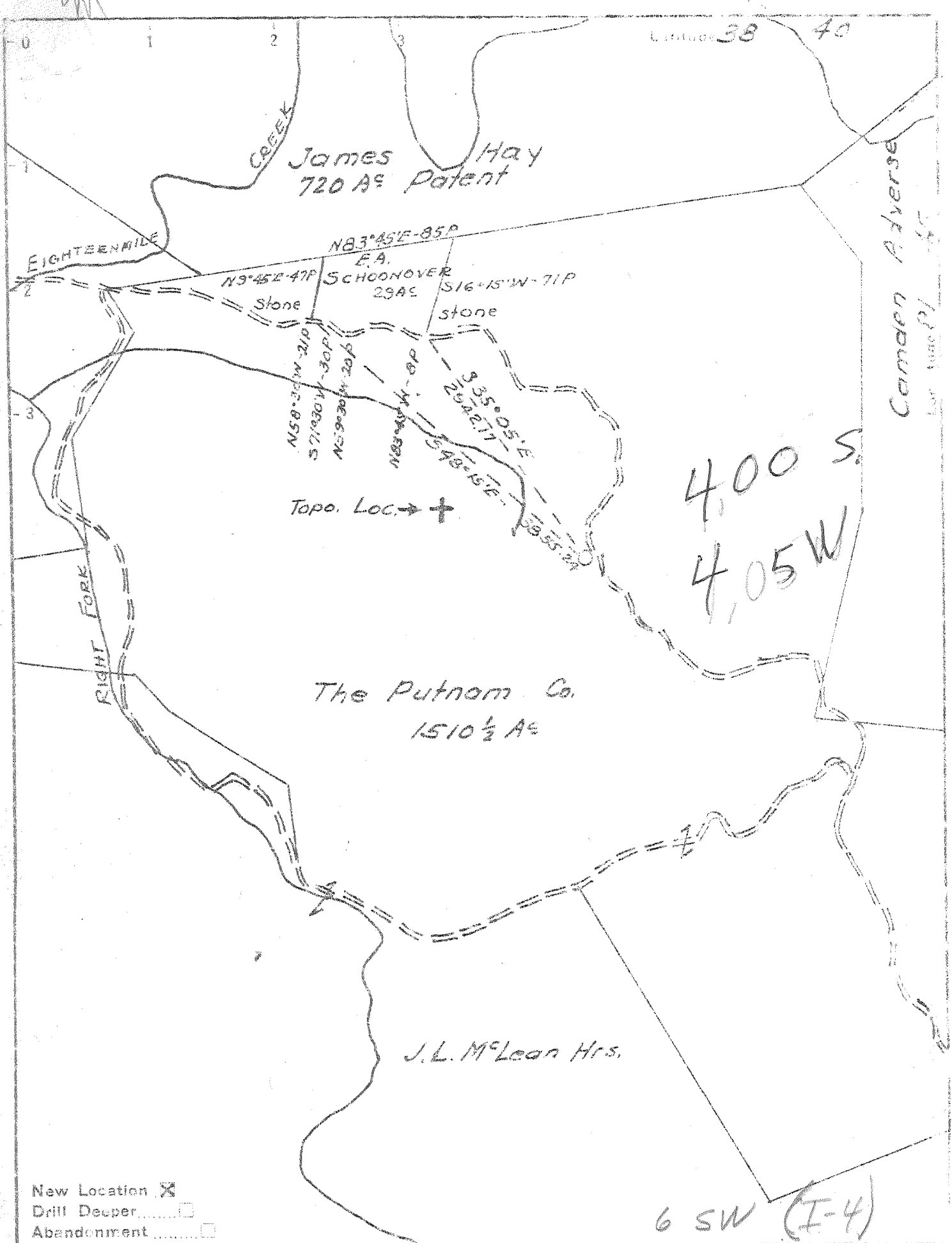
New Location...    
 Drill Deeper.....    
 Abandonment.....

Company Cabot Oil & Gas Corporation   
 Address 2000 Gateway Center, Pittsburgh, PA   
 Farm The Putnam Co.   
 Tract \_\_\_\_\_ Acres 1510 1/2 Lease No. 3-464   
 Well (Farm) No. 46 Serial No. 1401   
 Elevation (Spirit Level) 354.6   
 Quadrangle Bancroft 7.5'   
 County Putnam District Union   
 Engineer H.J. Simmons Jr.   
 Engineer's Registration No. 1652   
 File No. \_\_\_\_\_ Drawing No. \_\_\_\_\_

STATE OF WEST VIRGINIA   
 Division of Environmental Protection   
 Office of Oil & Gas   
 Nitro, WV.   
 WELL LOCATION MAP   
 App. Well No. 47-079-0538-P

+ Denotes location of well on United States Topographic Maps, scale 1 to 62,500, latitude and longitude lines being represented by border lines as shown.

- Denotes one inch spaces on border line of original tracing.



- New Location
- Drill Deeper
- Abandonment

Company Godfrey L. Cabot Inc  
 Address Box 1473 Charleston W.Va.  
 Farm The Putnam Co.  
 Tract \_\_\_\_\_ Acres 1510 1/2 Lease No. 3-464  
 Well (Farm) No. 46 Serial No. 1901  
 Elevation (Spirit Level) 954.6  
 Quadrangle Winfield - EC  
 County Putnam District Union  
 Engineer H.L. Simmons Jr.  
 Engineer's Registration No. 1652  
 File No. \_\_\_\_\_ Drawing No. \_\_\_\_\_  
 Date 11-19-52 Scale 1" = 1320'

STATE OF WEST VIRGINIA  
 DEPARTMENT OF MINES  
 OIL AND GAS DIVISION  
 CHARLESTON

WELL LOCATION MAP  
 FILE NO. PUT-538

- + Denotes location of well on United States Topographic Maps, scale 1 to 62,500, latitude and longitude lines being represented by border lines as shown.
- Denotes one corner or border line of original tracing.

P

GODFREY L. CABOT, INC.

WELL RECORD 12

FINAL LOG

SERIAL NO. 1401 OPERATING DISTRICT PN  
 FARM Putnam Co. No. 46 LEASE NO.  
 COUNTY Putnam TAX DISTRICT Union STATE W. Va.  
 DRILLING COMMENCED January 1, 1953 DRILLING COMPLETED April 17, 1953

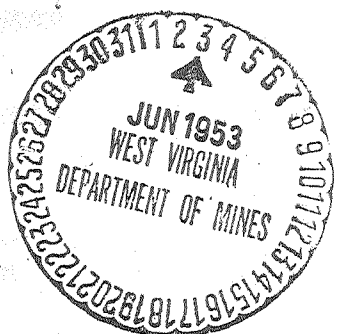
CONTRACTOR Company tools ADDRESS

| ROCK PRESSURE RECORD |      |              |         | PRODUCING SAND RECORD |                 |         |                             |
|----------------------|------|--------------|---------|-----------------------|-----------------|---------|-----------------------------|
| Brown Shale          | Sand | 930 lbs., in | 96 hrs. | Brown Shale           | Sand, from 4069 | to 4318 | Init. Prod. 25 M. C. F. Gas |
|                      | Sand | lbs., in     | hrs.    |                       | Sand, from      | to      | Init. Prod. M. C. F. Gas    |
|                      | Sand | lbs., in     | hrs.    |                       | Sand, from      | to      | Init. Prod. M. C. F. Gas    |

| OPEN FLOW                            |               |              | CASING RECORD |        |                  |              |                |
|--------------------------------------|---------------|--------------|---------------|--------|------------------|--------------|----------------|
| Time, Condition:                     | After shot    |              | SIZE          | WEIGHT | USED IN DRILLING | LEFT IN WELL | HOW CASING SET |
| 10ths Water                          | Mercury in    | inch opening |               |        |                  |              |                |
| Volume                               | 211           | M. C. F.     | 16"           | 62.58  | 20               | 20           |                |
| 24 HOUR PRODUCTION TEST AFTER TUBING |               |              | 13"           | 48#    | 201              | 201          |                |
| M. C. F.                             | Line Pressure |              | 10-3/4"       | 35.75  | 1151             | 1151         | Shoe           |
| Bbls. Oil                            | in 24 Hours   |              | 8-5/8"        | 24#    | 2292             | 2292         | B.H. Packer    |
| TUBED AND SHUT IN                    | Date          |              | 7"            | 24#    | 4899             | none         | Lead Packer    |
| Packer, Size                         | Kind          |              |               |        |                  |              |                |
| Set, Depth                           | Size Anchor   |              |               |        |                  |              |                |
| Perf. Top                            | Bottom        |              |               |        |                  |              |                |
| Perf. Top                            | Bottom        |              |               |        |                  |              |                |

SHOOTING RECORD  
 Shot with 2600# gel from 4069 to 4318 Date  
 Gauge Before Shot 25 Mcf Gauge 70 Min. After Shot 211 M

| FORMATION     | COLOR | TOP  | BOTTOM | STEEL LINE MEASUREMENTS | HARD OR SOFT | OIL, GAS OR WATER | DEPTH FOUND | REMARKS          |
|---------------|-------|------|--------|-------------------------|--------------|-------------------|-------------|------------------|
| Red Rock      |       | 0    | 44     |                         |              |                   |             |                  |
| Slate         |       | 44   | 66     |                         |              |                   |             |                  |
| Red Rock      |       | 66   | 88     |                         |              |                   |             |                  |
| Slate         |       | 88   | 116    |                         |              |                   |             |                  |
| Sand          |       | 116  | 142    |                         |              | Water             | 120         | 1 bbl per hr.    |
| Slate         |       | 142  | 175    |                         |              |                   |             |                  |
| Sand          |       | 175  | 204    |                         |              |                   |             |                  |
| Red Rock      |       | 204  | 215    |                         |              |                   |             |                  |
| Slate         |       | 215  | 245    |                         |              |                   |             |                  |
| Red Rock      |       | 245  | 255    |                         |              |                   |             |                  |
| Sand          |       | 255  | 270    |                         |              |                   |             |                  |
| Slate         |       | 270  | 290    |                         |              |                   |             |                  |
| Sand          |       | 290  | 321    |                         |              |                   |             |                  |
| Red Rock      |       | 321  | 328    |                         |              |                   |             |                  |
| Lime          |       | 328  | 333    |                         |              |                   |             |                  |
| Red Rock      |       | 333  | 413    |                         |              |                   |             |                  |
| Slate         |       | 413  | 448    |                         |              |                   |             |                  |
| Red Rock      |       | 448  | 495    |                         |              |                   |             |                  |
| Sand          |       | 495  | 575    |                         |              |                   |             |                  |
| Slate         |       | 575  | 625    |                         |              |                   |             |                  |
| Red Rock      |       | 625  | 645    |                         |              |                   |             |                  |
| Sand          |       | 645  | 661    |                         |              |                   |             |                  |
| Red Rock      |       | 661  | 730    |                         |              |                   |             |                  |
| Lime          |       | 730  | 750    |                         |              |                   |             |                  |
| Red Rock      |       | 750  | 808    |                         |              |                   |             |                  |
| Sand          |       | 808  | 865    |                         |              |                   |             |                  |
| Slate         |       | 865  | 905    |                         |              |                   |             |                  |
| Sand          |       | 905  | 959    |                         |              |                   |             |                  |
| Slate & Shell |       | 959  | 983    |                         |              |                   |             |                  |
| Sand          |       | 983  | 1142   |                         |              |                   |             |                  |
| Lime          |       | 1142 | 1161   |                         |              | S. Water          | 1020        | 1/2 bbls per hr. |
| Sand          |       | 1161 | 1195   |                         |              |                   |             |                  |
| Slate         |       | 1195 | 1272   |                         |              |                   |             |                  |
| Sand          |       | 1272 | 1310   |                         |              |                   |             |                  |
| Slate         |       | 1310 | 1390   |                         |              |                   |             |                  |
| Sand          |       | 1390 | 1415   |                         |              |                   |             |                  |
| Slate         |       | 1415 | 1514   |                         |              |                   |             |                  |



| FORMATION     | COLOR | TOP  | BOTTOM | STEEL LINE MEASUREMENTS | HARD OR SOFT | OIL, GAS OR WATER | DEPTH FOUND | REMARKS           |
|---------------|-------|------|--------|-------------------------|--------------|-------------------|-------------|-------------------|
| Sand          |       | 1514 | 1520   |                         |              |                   |             |                   |
| Slate         |       | 1520 | 1512   |                         |              |                   |             |                   |
| Salt Sand     |       | 1512 | 1574   |                         |              |                   |             |                   |
| Slate & Shell |       | 1574 | 1725   |                         |              |                   |             |                   |
| Salt Sand     |       | 1725 | 1918   |                         |              | Water             | 1510        | Filled to 400 ft. |
| Big Linn      |       | 1918 | 2110   |                         |              | Gas               | 2055        |                   |
| White Slate   |       | 2110 | 2128   |                         |              |                   |             |                   |
| Sand          |       | 2128 | 2267   |                         |              |                   |             |                   |
| Slate         |       | 2267 | 2288   |                         |              |                   |             |                   |
| Linn          |       | 2288 | 2308   |                         |              |                   |             |                   |
| Slate & Shell |       | 2308 | 2597   |                         |              |                   |             |                   |
| Brown Slate   |       | 2597 | 2625   | 2626-2636               |              |                   |             |                   |
| Brown         |       | 2625 | 2638   |                         |              | Oil               | 2630        | Show              |
| Slate & Shell |       | 2638 | 3009   |                         |              | Gas               | 3745        | Show              |
| Brown Slate   |       | 3009 | 3384   |                         |              |                   |             |                   |
| Slate & Shell |       | 3384 | 4070   |                         |              |                   |             |                   |
| Brown Slate   |       | 4070 | 4142   |                         |              |                   |             |                   |
| Slate & Shell |       | 4142 | 4177   |                         |              | Gas               | 4100        | 21 Inf.           |
| Brown Slate   |       | 4177 | 4294   |                         |              |                   |             |                   |
| Slate & Shell |       | 4294 | 4570   |                         |              |                   |             |                   |
| Brown Slate   |       | 4570 | 4589   |                         |              | Gas               | 4577        | 14 Inf.           |
| Corniferous   |       | 4589 | 4973   |                         |              |                   | 4677        |                   |
| Crinoidal     |       | 4973 | 5001   |                         |              |                   |             |                   |
| Linn          |       | 5001 |        |                         |              |                   |             |                   |
| Total Depth   |       |      | 5057   |                         |              |                   |             |                   |

4889 4973  
 955  
 3934  
 5057

TOTAL DEPTH

DATE \_\_\_\_\_

APPROVED \_\_\_\_\_ FOREMAN