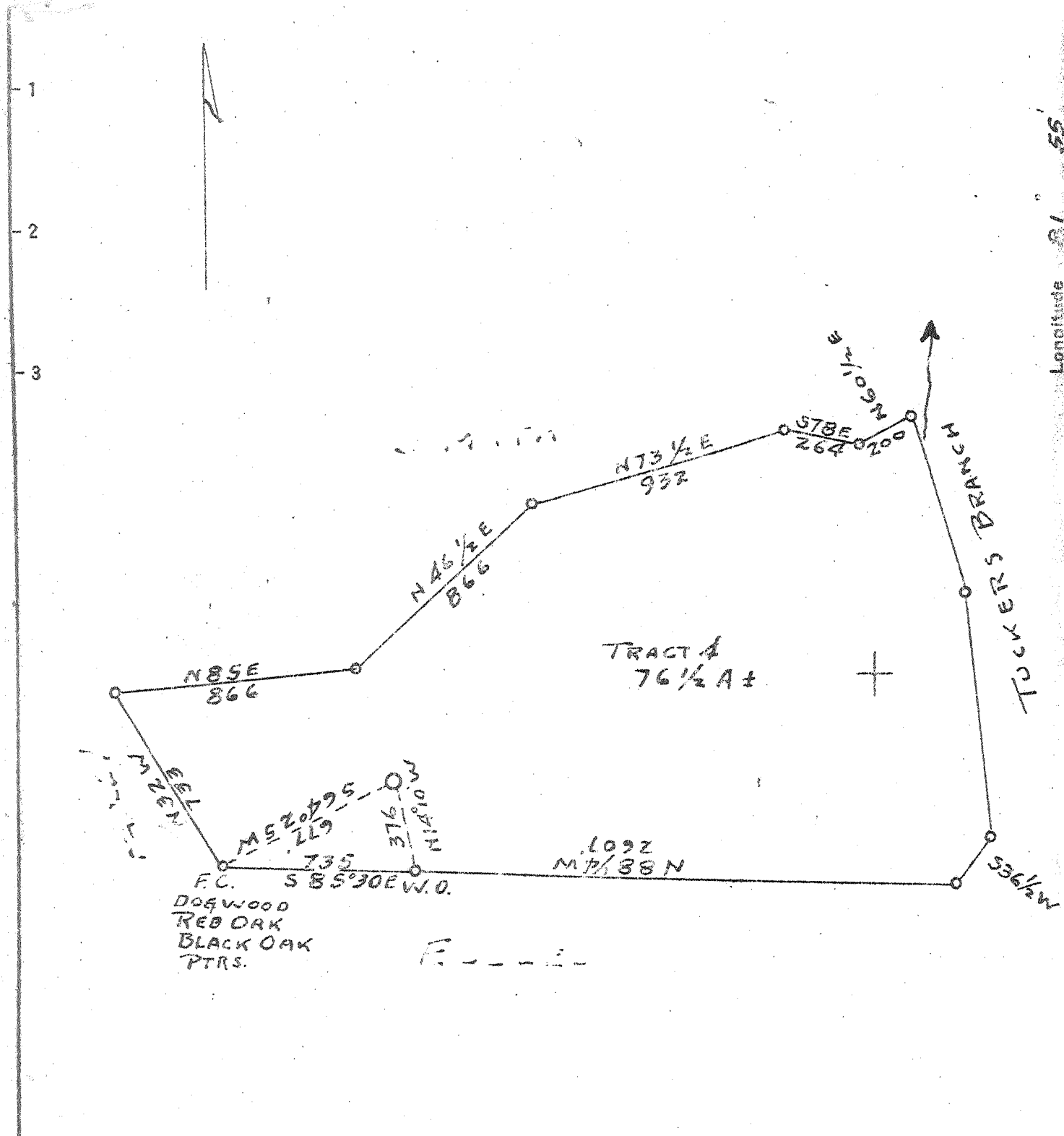


nm

Latitude 30 35

Longitude 81 55



DOGWOOD  
 RED OAK  
 BLACK OAK  
 PTRS.

TRACT 4  
 76 1/2 A ±

5.39 S.  
 1.38 W.  
 9 SE (I-4)

New Location   
 Drill Deeper   
 Abandonment

Company TEAVEE OIL & GAS INC.  
 Address CHARLESTON, W. VA.  
 Farm E. J. McCALLISTER  
 Tract 4 Acres 162 Lease No. \_\_\_\_\_  
 Well (Farm) No. 1 Serial No. 53  
 Elevation (Spirit Level) 855  
 Quadrangle WINFIELD - SW  
 County POTNAM District SCOTT  
 Engineer JOHN GALPIN  
 Engineer's Registration No. 875  
 File No. \_\_\_\_\_ Drawing No. \_\_\_\_\_  
 Date MAY 25, 51 Scale 1" = 500'

STATE OF WEST VIRGINIA  
 DEPARTMENT OF MINES  
 OIL AND GAS DIVISION  
 CHARLESTON

**WELL LOCATION MAP**  
 FILE NO. PUT-479

+ Denotes location of well on United States Topographic Maps, scale 1 to 62,500, latitude and longitude lines being represented by border lines as shown.

- Denotes one inch spaces on border of original tracing.

Deep Well

WEST VIRGINIA DEPARTMENT OF MINES  
OIL & GAS DIVISION  
W E L L R E C O R D

Permit No. Put 479

Winfield Quad.

Company

Address

Farm

Location

Well No.

District

Surface

Mineral

Commenced

Completed

Date shot

Open flow

Volume

Rock Pressure

Salt Water

Teavee Oil & Gas, Inc.

Charleston, W. Va.

E. J. McCallister Acres 162

Tuckers Branch

L-53 Elev. 855

Scott Putnam County

E. J. McCallister, Winfield, W. Va.

Same

May 21, 1951

Sept. 4, 1951

9-5-51 Depth 3380 to 4382

with 10,000 # E.L. 407 A

13/10ths W in 2" 3 hr. A.S.

152,000 C.F.

Not taken

860'; 1325' ; 1450'

Gas Well  
CASING & TUBING

16 20  
13 3/8 96  
10 1/2 800 Pld.  
8 5/8 1650 Pld.  
7 2372

Coal at 250 to 253'

Surface	0	4
Red Rock	4	15
Blue Rock	15	27
Red Rock	27	60
Sand	60	72
Blue Rock	72	90
Red Rock	90	125
Lime Shell	125	132
Red Rock	132	195
Blue Rock	195	250
✓Coal <small>Elev 252</small>	250	253
Blue Mud	253	345
Red Rock	345	408
Sand	408	430
Lime	430	438
Blue Mud	438	507
Sand	507	545
Red Rock	545	575
Sand	575	615
Blue Mud	615	655
Sand	655	674
Blue Mud	674	730
Lime Sand	730	777
Blue Mud	777	800
Black Slate	800	835
Sand	835	870
Slate Sand	870	1305
✓Salt Sand	1305	1616
✓Little Lime	1616	1636
✓Pencil Cave	1636	1639
✓Big Lime	1639	1805
Slate	1805	1810
✓Injun Sand	1810	1920
Slate & Shells	1920	2326
✓Coffee Slate	2326	2347
✓Berca Sand	2347	2375
Slate & Shells	2375	3508
Brown Shale	3508	3880
White Slate	3880	4221
Brown Shale	4221	4382

T.D.

4382



STATE OF WEST VIRGINIA  
DEPARTMENT OF MINES  
OIL AND GAS DIVISION

Quadrangle Winfield

Permit No. Put. 479D

WELL RECORD

Oil or Gas Well Gas  
(KIND)

Company V. C. Smith  
 Address 1901 Kanawha Valley Bldg., Chas., W.Va.  
 Farm E. J. McCallister Acres 162  
 Location (waters) Tuckers Branch  
 Well No. \_\_\_\_\_ Elev. 855'  
 District Scott County Putnam  
 The surface of tract is owned in fee by E. J. McCallister  
 Address Winfield, W.Va.  
 Mineral rights are owned by E. J. McCallister  
 Address Winfield, W. Va.  
 Drilling commenced October 29, 1958  
 Drilling completed December 7, 1958  
 Date Shot Not Shot From \_\_\_\_\_ To \_\_\_\_\_  
 With \_\_\_\_\_  
 Open Flow 7 /10ths Water in 2 Inch  
 \_\_\_\_\_ /10ths Merc. in \_\_\_\_\_ Inch  
 Volume 112,000 Cu. Ft.  
 Rock Pressure \_\_\_\_\_ lbs. \_\_\_\_\_ hrs.  
 Oil \_\_\_\_\_ bbls., 1st 24 hrs.  
 WELL ACIDIZED \_\_\_\_\_  
 WELL FRACTURED \_\_\_\_\_

Casing and Tubing	Used in Drilling	Left in Well	Packers
Size			
16			Kind of Packer _____
13			Gas Anchor _____
10			Size of <u>7 X 2</u>
8 1/4			Depth set <u>4506</u>
6 3/4			Perf. top <u>4530</u>
5 3/16			Perf. bottom <u>4540</u>
3		<u>4546</u>	Perf. top _____
2			Perf. bottom _____
Liners Used			

CASING CEMENTED \_\_\_\_\_ SIZE \_\_\_\_\_ No. Ft. \_\_\_\_\_ Date \_\_\_\_\_  
 COAL WAS ENCOUNTERED AT \_\_\_\_\_ FEET \_\_\_\_\_ INCHES  
 \_\_\_\_\_ FEET \_\_\_\_\_ INCHES FEET \_\_\_\_\_ INCHES  
 \_\_\_\_\_ FEET \_\_\_\_\_ INCHES FEET \_\_\_\_\_ INCHES

RESULT AFTER TREATMENT \_\_\_\_\_

ROCK PRESSURE AFTER TREATMENT \_\_\_\_\_

Fresh Water \_\_\_\_\_ Feet \_\_\_\_\_ Salt Water \_\_\_\_\_ Feet \_\_\_\_\_

Formation	Color	Hard or Soft	Top	Bottom	Oil, Gas or Water	Depth	Remarks
Corniferous Lime Corrected To			4435	4533			
Oriskany Sand			4533	4543			
Total Depth			<u>475</u>	4546			

