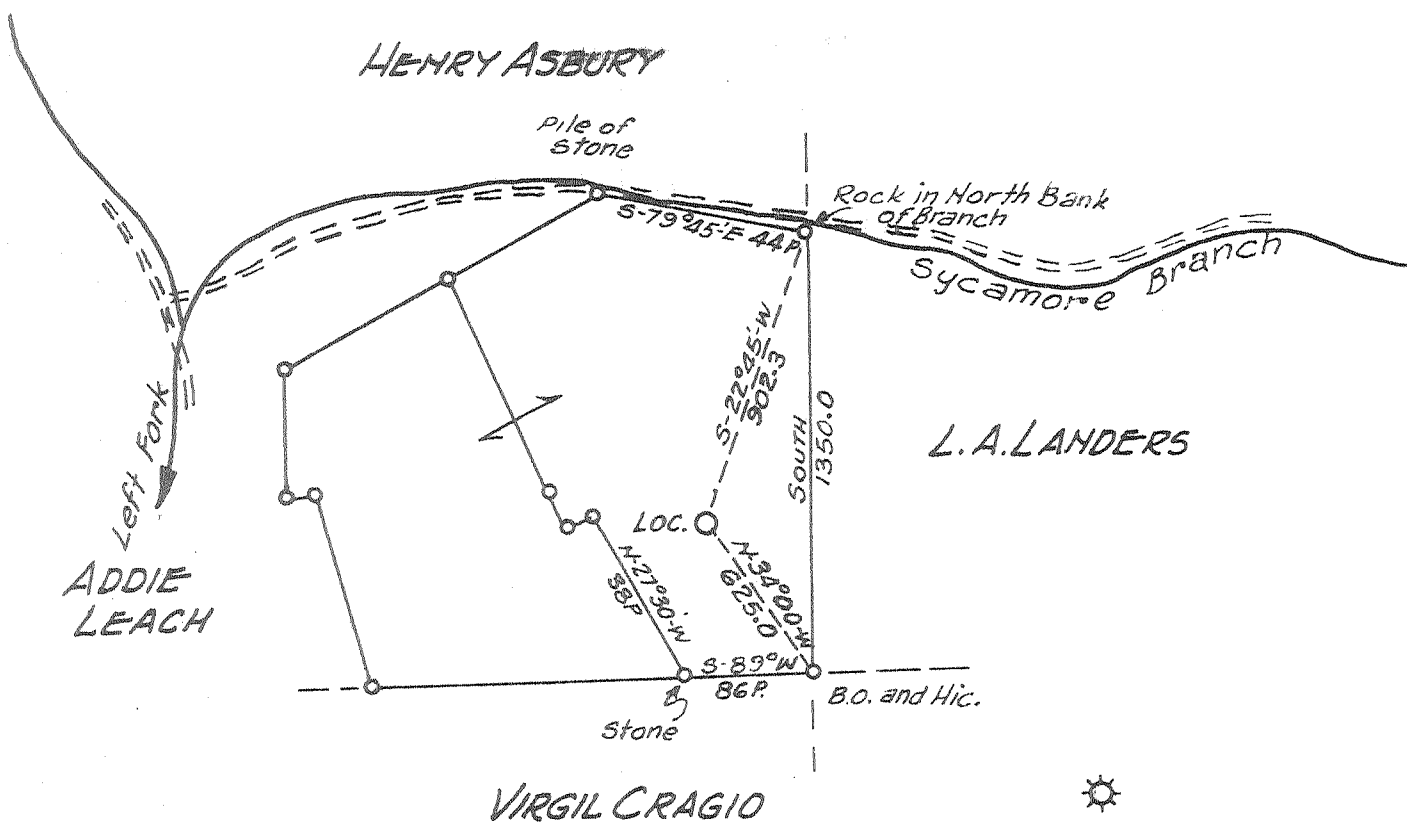


⊕ Topo Loc.



New Location   
 Drill Deeper   
 Abandonment  issued 3/12/75

No Commercial Coal Operated

Medunkin Corporation  
 Company G.E. SAMPLES  
 Box 513 RIHEVILLE W.VA. Charleston  
 Address 25322  
 Farm FLORENCE EVA SIMMONS ETAL.  
 Tract \_\_\_\_\_ Acres 53 1/8 Lease No. \_\_\_\_\_  
 Well (Farm) No. 1 Serial No. \_\_\_\_\_  
 Elevation (Spirit Level) 897.4  
 Quadrangle WINFIELD-7-5E  
 County PUTNAM District POCATALICO  
 Engineer C.G. Brantham  
 Engineer's Registration No. 683  
 File No. \_\_\_\_\_ Drawing No. \_\_\_\_\_  
 Date 8/14/50 Scale 1" = 660'

STATE OF WEST VIRGINIA  
 DEPARTMENT OF MINES  
 OIL AND GAS DIVISION  
 CHARLESTON

WELL LOCATION MAP  
 FILE NO. Put-452-P

+ Denotes location of well on United States Topographic Maps, scale 1 to 62,500, latitude and longitude lines being represented by border lines as shown.

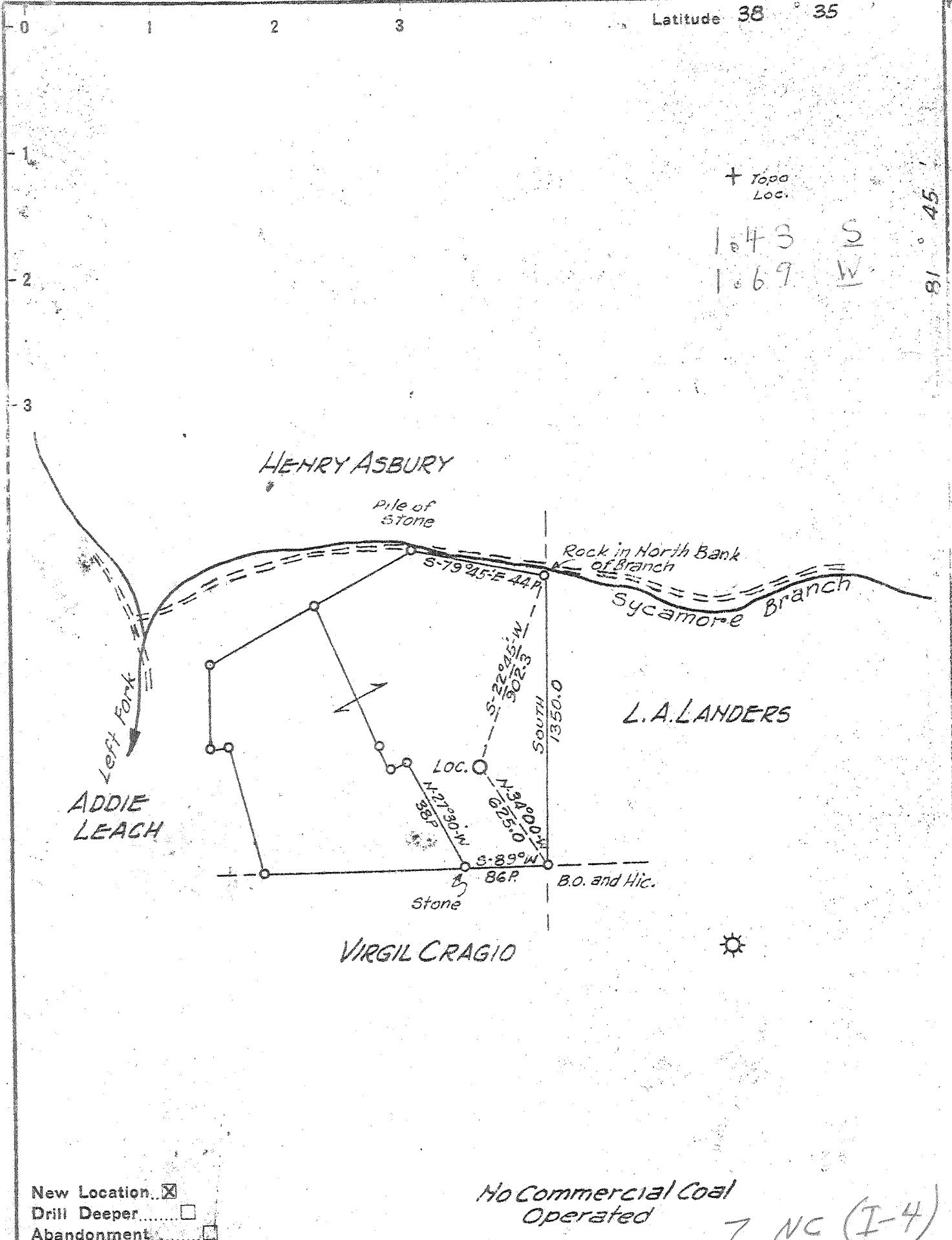
- Denotes one inch spaces on border line of original tracing.

47-079

Deep well

MAR 24 1975

Latitude 38° 35'



+ Topo Loc.  
 1043 S  
 1069 W

81° 45'

New Location   
 Drill Deeper   
 Abandonment

No Commercial Coal Operated

7 NC (I-4)

Company C. L. SAMPLES  
 Address PINEVILLE W.VA.  
 Farm FLORENCE EVA SIMMONS ET AL.  
 Tract \_\_\_\_\_ Acres 53 1/8 Lease No. \_\_\_\_\_  
 Well (Farm) No. 1 Serial No. \_\_\_\_\_  
 Elevation (Spirit Level) 897.4  
 Quadrangle WINFIELD - SE  
 County PUTNAM District POCATAHICO  
 Engineer C. A. Branham  
 Engineer's Registration No. 683  
 File No. \_\_\_\_\_ Drawing No. \_\_\_\_\_  
 Date 8/14/50 Scale 1" = 660'

STATE OF WEST VIRGINIA  
 DEPARTMENT OF MINES  
 OIL AND GAS DIVISION  
 CHARLESTON

WELL LOCATION MAP  
 FILE NO. Put-452

+ Denotes location of well on United States Topographic Maps, scale 1 to 62,500, latitude and longitude lines being represented by border lines as shown.  
 - Denotes one inch spaces on border line of original tracing

Deep Well

WEST VIRGINIA DEPARTMENT OF MINES  
OIL & GAS DIVISION  
WELL RECORD

Permit No. Put-452  
Winfield Quad.

*Probably Pocahontas Dist - No Clear Fork Dist in County*

Gas Well

CASING & TUBING

Company	C. L. Sample			
Address	Allison Park, Pa.	13	19	19
Farm	Florence Eva Simmins A. 56	10	304	None
Location	Manilla Creek	8 $\frac{1}{2}$	912	912
Well No. 1	Elev. 897.4	6-5/8	2120	2120
District	Clear Fork County Putnam	5-3/16	4884	4884
Mineral	Florence Eva Simmions	2	4995	4995
Commenced	9/25/50			
Completed	12/28/50			
Shot	12/31/50 from 4959 to 4975			Casing cemented 5 $\frac{1}{2}$ size 4884
	With 40 qts.			
Open Flow	4/10ths water in 5 $\frac{1}{2}$ , 17 lb.			
Volume	565,000 c.f.			
Rock Pressure	900 lbs. 36 hrs.			
Salt Water	1640 feet			

Slate		0	12	
Sand	White	12	50	
Red Rock		50	90	
Slate	Grey	90	100	
Red Rock		100	110	
Shale	"	110	160	
Red Rock		160	187	
Sand	"	187	197	
Shale	"	197	220	
Red Rock		220	253	
Shale	"	253	343	
Lime	"	343	353	
Shale	"	353	375	
Lime	"	375	390	
Shale	"	390	425	
Lime	"	425	444	
Red Rock		444	460	
Lime	"	460	480	
Red Rock		480	512	
Lime	"	512	555	
Red Rock		555	640	
Lime	"	640	686	
Shale	"	686	692	
Lime	"	692	710	
Shale	White	710	730	
Red Rock		730	750	
Shale	"	750	762	
Red Rock		762	800	
Lime		800	885	
Shale	"	885	900	
Sand	"	900	959	
Slate	"	959	970	
Sand	"	970	980	
Slate		980	990	
Lime		990	1010	
Slate	"	1010	1075	
Sand		1075	1177	
Slate		1177	1181	
Sand	"	1188-	1200	
Shale	Grey	1200	1480	
Sand	White	1480	1815	1640
Shale	"	1815	1821	
Lime	Grey	1821	1855	
Sand	"	1855	1885	
Lime Big	"	1885	1998	
Sand Inj.	"	1998	2114	
Slate		2114	2120	
Lime Shs.	"	2120	2270	
Sand		2270	2290	
Lime Shell	"	2290	2330	
Shale		2330	2348	
Lime	"	2348	2380	

Permit No. Put-452

Shale	Grey	2380	2470		
Lime		2470	2506		
Shale	Dark	2506	2514		
Shale	Brown	2514	2530		
Sand Brea		2530	2580		
Shale & Shel.		2580	2695		
Lime		2695	2720		
Slate & Shel.		2720	3060		
Slate	White	3060	4053		
Shale	Brown	4053	4333	Show gas	4075 5000
Shale	Grey	4333	4673		
Shale	Brown	4673	4865		
Lime Ond.		4865	4958		
Oriskany		4958	4995	Gas	4962-4970 350,000

~~4865~~    4958  
 897        897  


---

 3968    4061