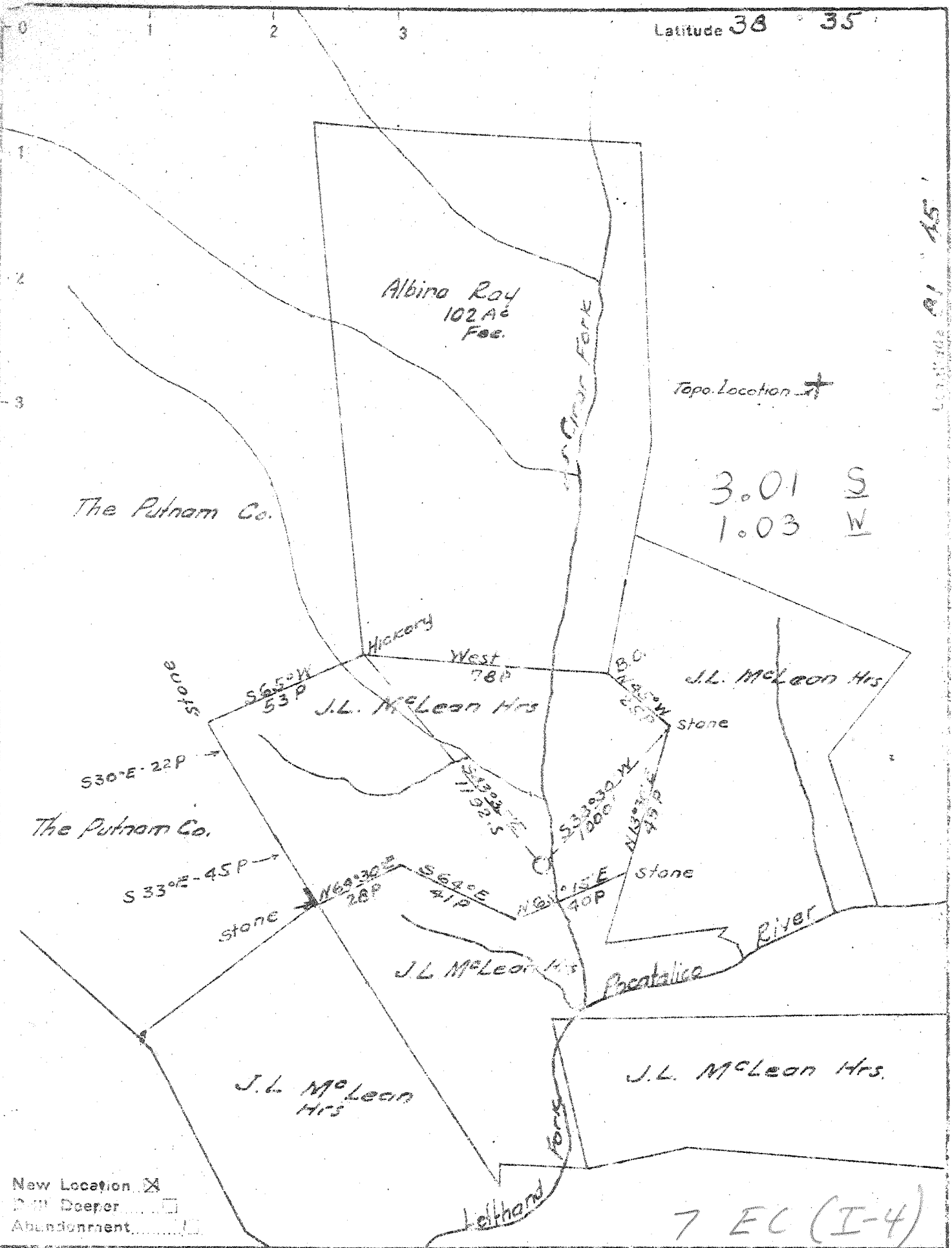


P

Latitude 38 35

Longitude 81 15



New Location
 Drill Deeper
 Abandonment

Company Geedney L. Carbet Inc
 Address 300 Union Bldg, Charleston, W. Va
 Farm J.L. McLean Hairs
 Tract _____ Acres 5.5 Lease No. 3-463
 Well (Farm) No. 91 Serial No. 1304
 Elevation (Spirit Level) 656.0 Ground
 Quadrangle Winfield - SE
 County Putnam District Pocatalico
 Engineer H. J. Summers Jr
 Engineer's Registration No. 1652
 File No. _____ Drawing No. _____
 Date 5-24-49 Scale 1" = 660'

STATE OF WEST VIRGINIA
 DEPARTMENT OF MINES
 OIL AND GAS DIVISION
 CHARLESTON

WELL LOCATION MAP
 FILE NO. PUB-411

+ Denotes location of well on United States Topographic Maps, scale 1 to 62,500. latitude and longitude lines being represented by border lines as shown.
 - Denotes one inch spaces on border line of original tracing.

Deep Well

Big Lime 1642 - 1806

Big Injun 1806 - 1853

Berea Sand 2276 - 2295

Onondagan Group 4664 - 4753

Oriskany 4753 - 4804

Lime 4804 - 4817 (T.O.)

Filled back to 4785'

Vol. 280 Mcf in Oriskany (4764 - 4765')

Now U.F.G. Co 6520 gas well as of Aug 21, 1950

Completed Oct. 13, 1949



U.F.G. Co. 6520 gas well as of Aug 21, 1950

Completed Oct. 13, 1949

Vol. 280 Mcf in Oriskany (4764 - 4765')

Filled back to 4785'

WEST VIRGINIA DEPARTMENT OF MINES
OIL & GAS DIVISION
W E L L R E C O R D

Permit No. Put 411		Gas Well
Winfield Quad.		CASING & TUBING
Company	United Fuel Gas Co.	
Address	P.O. Box 1273, Charleston 25, W.Va.	15½ 23 23
Farm	J.L. McLean, Hrs. Acres 55	13 150 150
Location	Clear Fk. of Poca River	10¾ 640 640
Well No.	UFG 6520, G.L. Cabot 1304 Elev. 656.0	8½ 1881 1881
District	Poca Putnam County	7 4667 4667
Surface		
Mineral	Helen M. Hogo et al, Route 1, Ramsey, N.W.	
Commenced	7-7-49	
Completed	10-13-49	
Date shot	10-18-49 Depth 4753 to 4785 with 80 qts. Nitro (tamp shot)	
Open flow	44/10ths W in 2"	
Volume	280 M Oriskany	
Rock Pressure	1445 lbs. 24 hrs.	
Fresh Water	676' 2 BPH; 770' 1 BPH	
Salt Water	1420' H.F.	

JUN 23 1951

NOTE: This well location was made by G.L. Cabot, 5-24-49. The United Fuel Gas Company then drilled this well and later it was taken over by them (U.F.G.Co.) 1-10-50. Formerly known as G.L. Cabot well 1304, sold to G.L. Cabot by U.F.G.Co. 8-21-50. Was U.F.G. Co. Well 6520.

Sand & Gravel	0	17	Gas 2948' show
Blue Slate	17	65	Gas 3050' show
Sand	65	80	Oriskany Gas 4755 to 4759 9/10 W 2"
Slate & Shells	80	124	127 M, blow down to 4/10 W 2" 84 M
Coal	124	130	Oriskany Gas 4764-4765 6/10 W 2" 103 M
Slate & Shells	130	290	
Red Rock	290	380	Test before shot 3/10 W 2" 73 M
Blue Slate	380	450	Shot 10/18-49 with 80 qts. nitroglycerin
Red Rock	450	475	from 4753-4785, tamp shot.
Slate & Shells	475	492	Test after shot and cleaned out 44/10
Red Rock	492	532	W 2" 280 M
Sand	532	670	
Slate & Shells	670	750	Final Open flow 280 M Oriskany
Sand	750	815	24 hr. R.P. 1445#
Slate & Shells	815	835	
Black Sand	835	940	Shut in 10-27-49 in 7" casing
Slate	940	1226	
Gas Sand	1226	1260	Note: This well was drilled by
Slate & Shells	1260	1330	United Fuel Gas Company, later turned
Salt Sand	1330	1600	over to G.L.Cabot, Inc.
Slate	1600	1612	
Little Lime	1612	1640	
Pencil Cave	1640	1642	
Big Lime	1642	1806	
Injun Sand	1806	1853	
Slate	1853	1856	
Broken Sand	1856	1885	
Slate & Shells	1885	2262	
Brown Shale	2262	2276	
Berea Sand	2276	2295	
Slate & Shells	2295	3200	
Brown Shale	3200	3250	
White Shale	3250	3500	
Brown Shale	3500	4000	
White Slate	4000	4400	
Brown Shale	4400	4664	
Corniferous Limo	4664	4753	
Oriskany	4753	4804	
Lime	4804	4817	
T.D.	4817		
Filled back to 4785'			

4664
656
4008

4753

(Handwritten initials in a circle)

J. L. McLEAN HRS, JR. (UFG-6520) (G.L.C-1304) — U.F.G. Co. POT-411