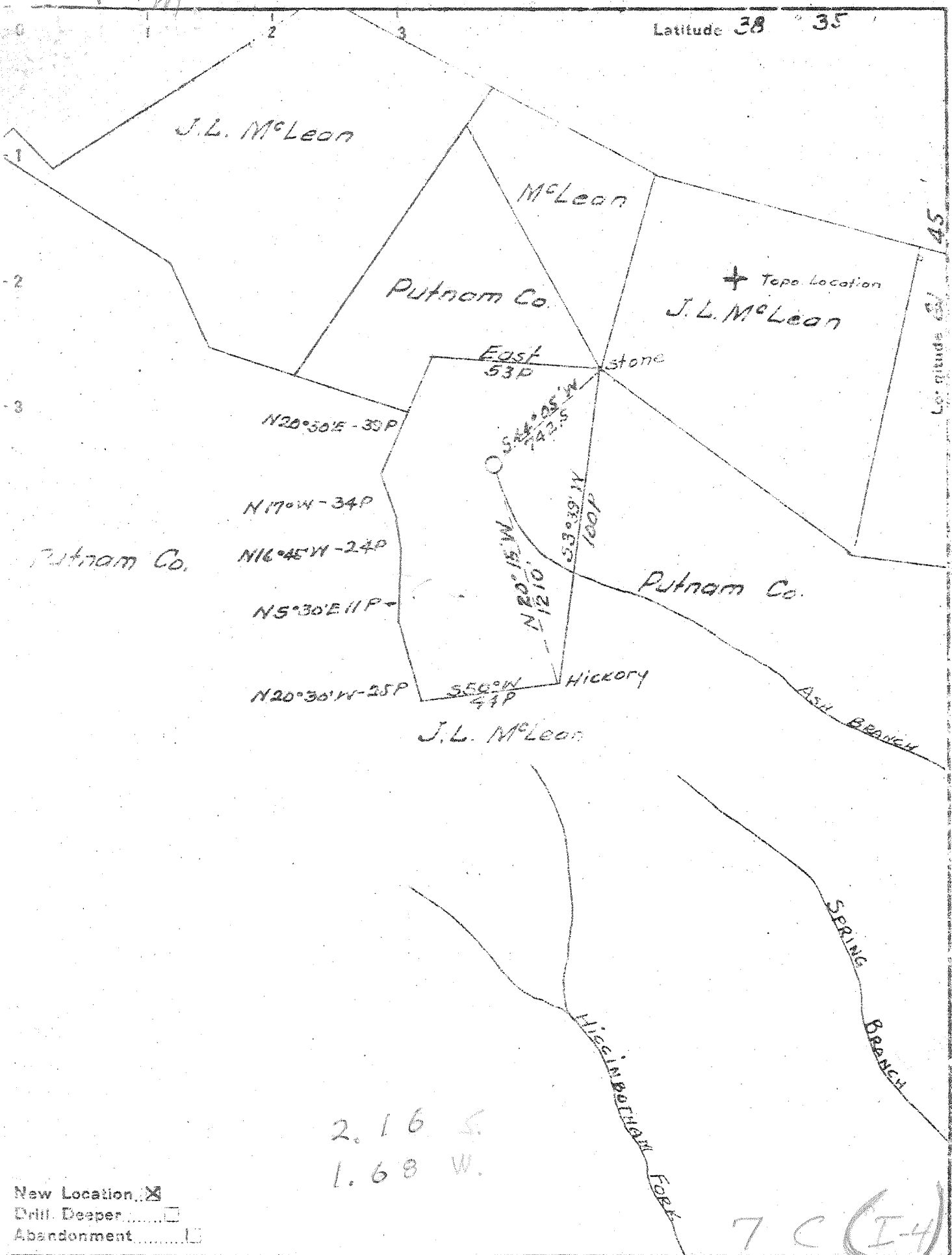


P



2.16 S.  
1.68 W.

New Location   
 Drill Deeper   
 Abandonment

7 C (I-4)

Company Godfrey L. Cabot Inc.  
 Address 500 Union Bldg. Charleston W. Va.  
 Farm J.L. McLeon Hrs  
 Tract \_\_\_\_\_ Acres 39 1/2 Lease No. 3-463  
 Well (Farm) No. 40 Serial No. 1298  
 Elevation (Spirit Level) 875.0  
 Quadrangle Winfield - SE  
 County Putnam District Pocatalico  
 Engineer H.J. Simmons Jr  
 Engineer's Registration No. 16522  
 File No. \_\_\_\_\_ Drawing No. \_\_\_\_\_  
 Date 5-25-49 Scale 1" = 660'

STATE OF WEST VIRGINIA  
 DEPARTMENT OF MINES  
 OIL AND GAS DIVISION  
 CHARLESTON

WELL LOCATION MAP  
 FILE NO. PUL-410

+ Denotes location of well on United States Topographic Maps, scale 1 to 62,500, latitude and longitude lines being represented by border lines as shown.  
 - Denotes one inch spaces on border line of original tracing.

No Samplers

Deep Well ✓

WEST VIRGINIA DEPARTMENT OF MINES  
OIL & GAS DIVISION  
W E L L R E C O R D

Permit No. Put 410  
Winfield Quad.

Gas Well  
CASING & TUBING

Company	Godfrey L. Cabot, Inc.			
Address	Charleston, W.Va.	16	62# 17	17 *
Farm	J.L. McLean Hoirs Acres	13	48# 272	272 **
Well No.	40 serial 1298 Elev. 867	10	35.75# 990	990 ***
District	Pocatalico Putnam County	8	24# 1852	1852 ****
Commenced	June 8, 1949	7	24# 2144	2144*****
Completed	Sept. 7, 1949	5½	17# 4883	4883*****

Not shot  
Open flow  
Volume  
Rock Pressure  
Water

14/10ths W 7" 24# \* Conductor \*\*13 3/8" csg. shoe  
3,639 MCF \*\*\*10" csg. shoe, \*\*\*\*8" B.H.Packer  
1490 lbs. in 24 hrs. \*\*\*\*\*7" x 85/8" x 10" Spang BH Packer  
844 1/2 blrs. per hr. \*\*\*\*\*5½" Lead Spang B.H.Packer  
1628 hole filling up; 1640 H.F. 2080' H.F.

Red Rock	0	25	Brown Shale	4035	4230
Slate	25	42	Slate & Shells	4230	4380
Red Rock	42	143	Brown Shale	4380	4394
Sand White	143	150	Slate & Shells	4394	4634
Red Rock	150	189	Brown Shale	4634	4868
Blue Lime	189	223	Corniferous	4868	4971SLM
Red Rock	228	255	Oriskany	4971	4984
Sand White	255	270	Total Depth		4984
Slate	270	285	Gas 4056 show		
Red Rock	285	295	Gas show 4918 show		
Blue Lime	295	334	Gas 4972-84 3,639 MCF		
Blue Slate	334	355			
Red Rock	355	385	NOTE: String of tools lost in hole at		
Sand White	385	399	total depth. Were not fished out		
Coal	399	403			
Lime Blue	403	448			
Red Rock	448	543			
Gritty Lime	548	530	PRODUCING SAND RECORD		
Red Rock	580	630	Oriskany 4971 to 4984 3,639 MCF		
Dark Lime	630	667			
Slate & Shells	667	716			
Red Rock	716	756			
Slate & Shells	756	800			
Blue Sand	800	880			
Slate	880	900			
White Sand	900	945			
Slate & Shells	945	951			
Sand	951	975			
Slate & Shells	975	1035			
Sand	1035	1130			
Slate Shells	1130	1154			
Gray Sand	1154	1210			
Slate & Shells	1210	1240			
White Sand	1240	1305			
Slate Shells	1305	1472			
White Sand	1472	1525			
Slate & Shells	1525	1570			
Salt Sand	1570	1810			
Gray Slate	1810	1812			
Little Lime	1812	1825			
Slate	1825	1827			
Little Lime	1827	1840			
Big Lime	1840	2041			
Slate	2041	2052			
Injun Sand	2052	2100			
Lime Shell	2100	2336			
Slate Shells	2336	2526			
Berea Grit	2526	2546			
Slate Shells	2546	3715			
Brown Shale	3715	3780			
Slate & Shells	3780	3804			
Lime Shells	3804	3853			
Slate & Shells	3853	3940			
Brown Shale	3940	4010			
Slate & Shells	4010	4035			

4868  
867  
-----  
4001



STATE OF WEST VIRGINIA  
DEPARTMENT OF MINES  
OIL AND GAS DIVISION

Quadrangle Winfield  
Permit No. Put-410-D

**WELL RECORD**

Oil or Gas Well Eas  
(KIND)

Company Godfrey L. Cabot, Inc.  
Address Charleston, W. Va.  
Farm J.L. McLean Hrs. Acres 39.5  
Location (waters) \_\_\_\_\_  
Well No. 10, Serial 1298 Elev. 875  
District Pocatalico County Putnam  
The surface of tract is owned in fee by \_\_\_\_\_  
Address \_\_\_\_\_  
Mineral rights are owned by J.L. McLean Hrs., c/o JHNash  
1710 Kanawha St. Address Charleston, W. Va.  
Drilling commenced 11-2-59  
Drilling completed 11-6-59  
Date Shot \_\_\_\_\_ From \_\_\_\_\_ To \_\_\_\_\_  
With \_\_\_\_\_  
Open Flow /10ths Water in \_\_\_\_\_ Inch  
/10ths Merc. in \_\_\_\_\_ Inch  
Volume \_\_\_\_\_ Cu. Ft.  
Rock Pressure \_\_\_\_\_ lbs. \_\_\_\_\_ hrs.  
Oil \_\_\_\_\_ bbls., 1st 24 hrs.  
WELL ACIDIZED \_\_\_\_\_

Casing and Tubing	Used in Drilling	Left in Well	Packers
Size			Kind of Packer
16			
13			Size of
10			Depth set
8 1/4			
6 5/8			
5 3/16	See original record		
3			Perf. top
2			Perf. bottom
Liners Used			Perf. top
			Perf. bottom

CASING CEMENTED	SIZE	No. Ft.	Date
COAL WAS ENCOUNTERED AT		FEET	INCHES
		FEET	INCHES
		FEET	INCHES

WELL FRACTURED DEEPENED to Newburg formation; no gas, oil or water in Newburg. Well  
Producing from Oriskany Sand.  
RESULT AFTER TREATMENT \_\_\_\_\_  
ROCK PRESSURE AFTER TREATMENT \_\_\_\_\_  
Fresh Water \_\_\_\_\_ Feet \_\_\_\_\_ Salt Water \_\_\_\_\_ Feet \_\_\_\_\_

Formation	Color	Hard or Soft	Top	Bottom	Oil, Gas or Water	Depth	Remarks
Original total depth 4984 with string of tools lost in hole at total depth (9/7/49). Tools fished out 10/21/54; well deepened in Oriskany sand to total depth 4993 and shot 10/26/54.							
Deepened November 1959 from 4993 to 5778.							
Oriskany			4971	5034			5034 875 <hr/> 4159
Line Held			5034	5178			
Dolomitic Lime	Salina		5178	5685			
Newburg			5685	5695			
Dolomitic Lime	- mckenzie		5695	5778			
TOTAL DEPTH			(SWD)	5778	No gas, oil or water in Newburg. Well producing 85 Mcf from Oriskany.		

