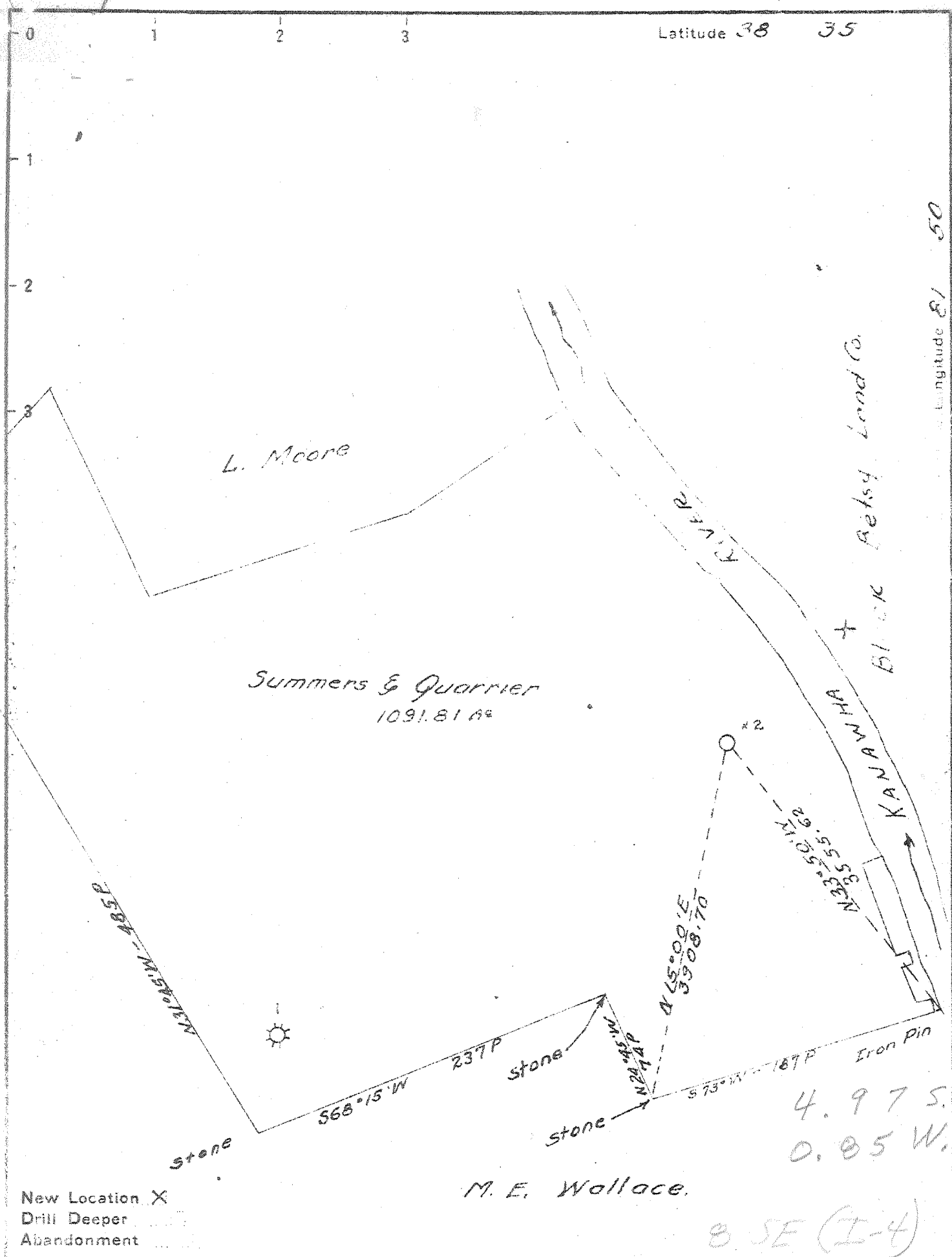


P

Latitude 38 35

Longitude 81 50



New Location X  
 Drill Deeper  
 Abandonment

M. E. Wallace.

BSE (I-4)

Company Gadfrey L. Cabot Inc.  
 Address 900 Union Bldg Charleston W. Va.  
 Farm Summers & Quarrier  
 Tract \_\_\_\_\_ Acres 1091.81 Lease No. 3-839  
 Well (Farm) No. 2 Serial No. 1174  
 Elevation (Spirit Level) 565.70  
 Quadrangle Winfield - 5C  
 County Putnam District Scott  
 Engineer Roy Boston  
 Engineer's Registration No. \_\_\_\_\_  
 File No. \_\_\_\_\_ Drawing No. \_\_\_\_\_  
 Date 2-1-45 Scale 1" = 1320'

STATE OF WEST VIRGINIA  
 DEPARTMENT OF MINES  
 OIL AND GAS DIVISION  
 CHARLESTON

WELL LOCATION MAP  
 FILE NO. PUT-304

+ Denotes location of well on United States Topographic Maps, scale 1 to 62,500, latitude and longitude lines being represented by border lines as shown.

- Denotes one inch spaces on border line of original tracing.

Deep Well

WEST VIRGINIA DEPARTMENT OF MINES  
OIL & GAS DIVISION  
W E L L R E C O R D

Permit No. Put 304

Gas Well  
CASING & TUBING

Winfield Quad.									
Company	Godfrey L. Cabot, Inc.								
Address	Charleston, W.Va.	16	55#	60	60	Csg.			
Farm	Summers & Quarrier	Acres				Cpl.			
Location		13 3/8"	48#	82	82	Hlf. Cpl.	Csg.		
Well No.	2-Ser 1174	Elev. 565.7				shoe			
District	Scott	Putnam County	10 3/8	35.75#	485	--	"	"	"
Surface			8 5/8	25.75	1439	--	8 5/8 x		
Mineral							10x16 BH Packer	#20108	
Commenced	Feb. 14, 1945		7 20x	22	1722	1722	7 x 8 1/2		
Completed	April 26, 1945	Brown Shale Shot	x 16"	B.H. Packer					
Date shot	5-3-45 with 1600#	from 3486 to 3712		#437111					
	B.S. 21 MCF	A.S. -16 hrs	60 M						
	(see below for Berea shot)						Not tubed		
Volume	52 MCF	after shooting brown shale							
	and Berea - 24/10ths W in 1"								

Soil & Red Rock	0	20	Brown Shale	3538	3545
Quick Sand	20	60	Slate & Shells	3545	3555
Red Rock	60	67	Shale, Stray	3555	3596
Lime	67	69	Slate & Shells	3596	3624
Sand	69	95	Brown Shale	3624	3735
Red Rock	95	136	Grey Shale	3735	3863
Blue Slate	136	141	Brown Shale	3863	3880
Red Rock	141	182	Slate & Shells	3880	3955
Blue Slate	182	239	Gray Shale	3955	4060
Red Rock	239	277	Lime, Dark	4060	4076
Blue Slate	277	316	Shale, Grey	4076	4115
Lime	316	320	Brown Shale	4115	4291
Sand	320	353	Black Shale	4291	4300
Blue Slate	353	400	Corniferous Lime	4300	4380
Bunkard Sand	400	448	Oriskany Sand	4380	4390
Blue Slate	448	466	Gritty Lime	4390	4409
Sand	466	476	Sandy Lime	4409	4420
Lime	476	484	Sand	4420	4438
Blue Slate	484	502	Total depth		4438
Lime	502	517	Lead plug ran at 4370; and plugged		
Slate	517	530	back to		3712
Lime	530	560	Hole filled to 4370. Lead plug driven		
Coal	560	564	at 4370. Oriskany water shut off.		
Slate	564	590	Hole bridged from 3712 to 3746; 16'		
Sand	590	675	cement on top of gravel.		
Slate	675	759			
Sand	759	782	Water 25' 1 blr. hr.; 72' 3 blrs. / hr.		
Slate & Shells	782	893	increased to 6 blrs.; 596' 4-10" blrs.		
Sand	893	921	per hr..		
Slate & Shells	921	940	Salt Water 1182 H.F. -level 90'; 1636'		
Lime	940	970	Water level in Injun Sand 225'		
Slate	970	980	4436-38 3 1/2 gals per hr.		
Sand	980	1055	GAS 1634-1636 light smell. 2112 18 MCF		
Slate	1055	1110	dec. to 15 M at 2153.; 3585 increased		
Salt Sand	1110	1365	flow from 15 M to 24 M dec. to 21 M.		
Slate	1365	1373			
Sand, Maxon	1373	1384	SLM 1439; 3585'4300'		
Black Slate	1384	1406			
Little Lime	1406	1424	BEREA SHOT 5-16-45 with 30 qts. from		
Black Slate	1424	1430	2102 to 2123. Gauge B.S. 38 MCF; 12		
Big Lime	1430	1600	hrs. A.S. shot 52 MCF (gauges above in-		
Slate	1600	1602	clude brown shale gas.		
Big Injun	1602	1670			
Slate	1670	1684	NOTE: Before Berea was shot a patented		
Slate & Shells	1684	1715	bridge was run at 2123. A.S. went off		
Lime, Gritty	1715	1773	the Brown Shale Gas was bridged off and		
Slate	1773	1780	Berea gas gauged 30 M. After bridged was		
Lime, blue	1780	1852	drilled out, Brown shale gas increased		
Slate & Shells	1852	2098	Total open flow to 52 MCF.		
Berea Sand	2098	2121	PRODUCING SAND RECORD		
Slate & Shell	2121	3292	Berea	2095-2122	18 MCF
Shale, Brown	3292	3350	Brown Shale	3585-3595	13 MCF
Slate & Shell	3350	3482	Brown Shale	3625-3635	4 MCF
Brown Shale	3482	3510			
Slate & Shells	3510	3538			

4300  
566  
3734