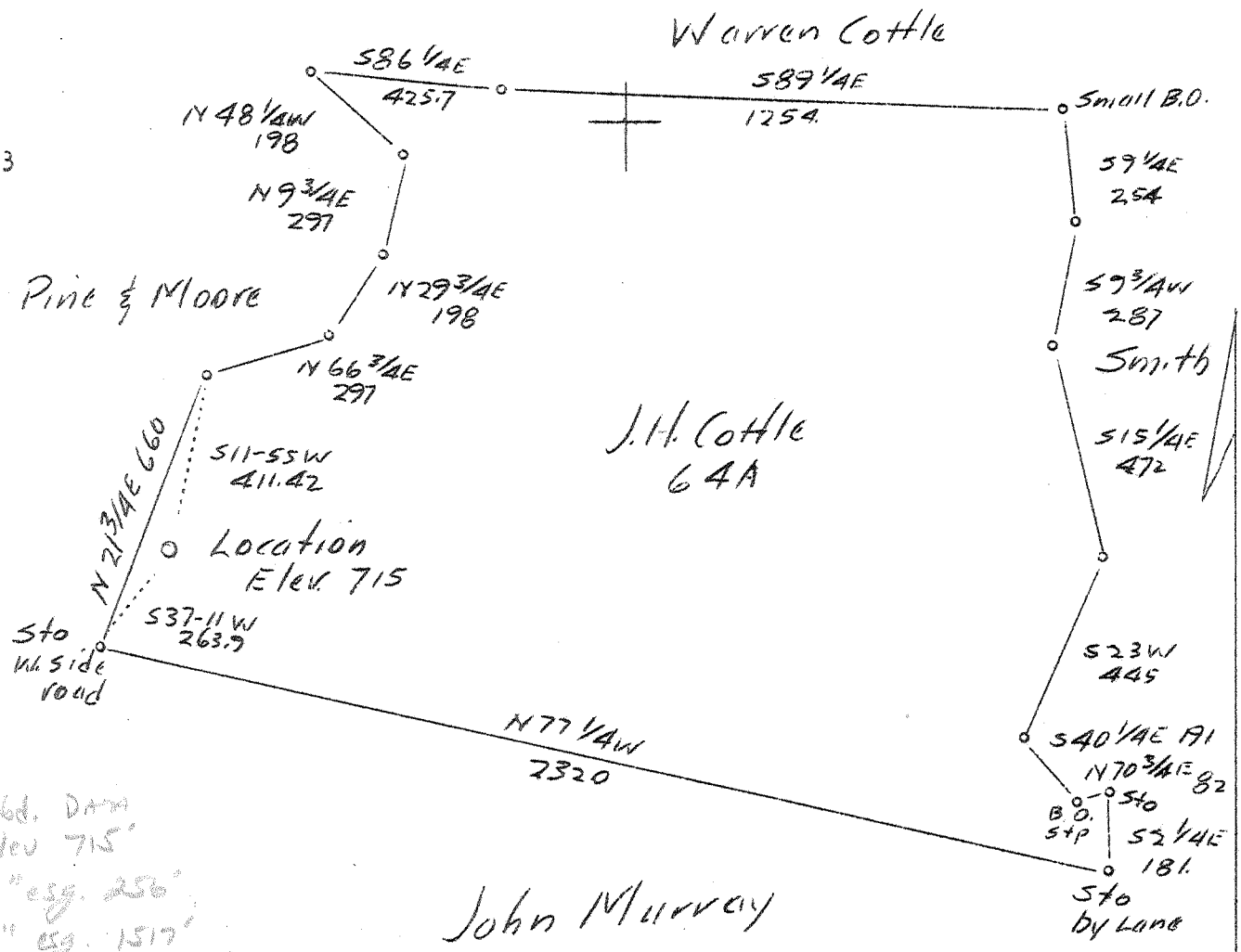


0 1 2 3 LATITUDE 38° 30'

LONGITUDE 81° 50'



Abd. Dam  
Elev 715'  
8" esp. 256'  
6" esp. 1517'  
F. WATER @ 105', 510', 635', 700'  
TD 1738'

John Murray

ABD PERMIT ISSUED: 7-26-37

3.85 W

\* REISSUED AS PUT-289, THEN DRILLED DEEPER 3.02

Company	Kirtley & Company
Address	Hurricane, W.Va.
Farm	J.H. Cottle
Tract	No. 1 Lease No.
Well (Farm)	No. J.H. Cottle #2
Quadrangle	St. Albans
County	Putnam
District	Scott
Engineer	C.C. Lovett
Engineer's Registration No.	137
File No.	Drawing No.
Date	July 12, 1937 Scale 1"=400'

now 79-289  
STATE OF WEST VIRGINIA  
Department of Mines  
OIL AND GAS DIVISION  
CHARIE STON  
WELL LOCATION MAP  
File No. PUT-47A

Denotes location of well on United States Topographic Maps, scale 1 to 62,500, latitude and longitude lines being represented by border lines as shown.

Denotes one inch spaces on border line of original tracing.

Scott Depot

(212)