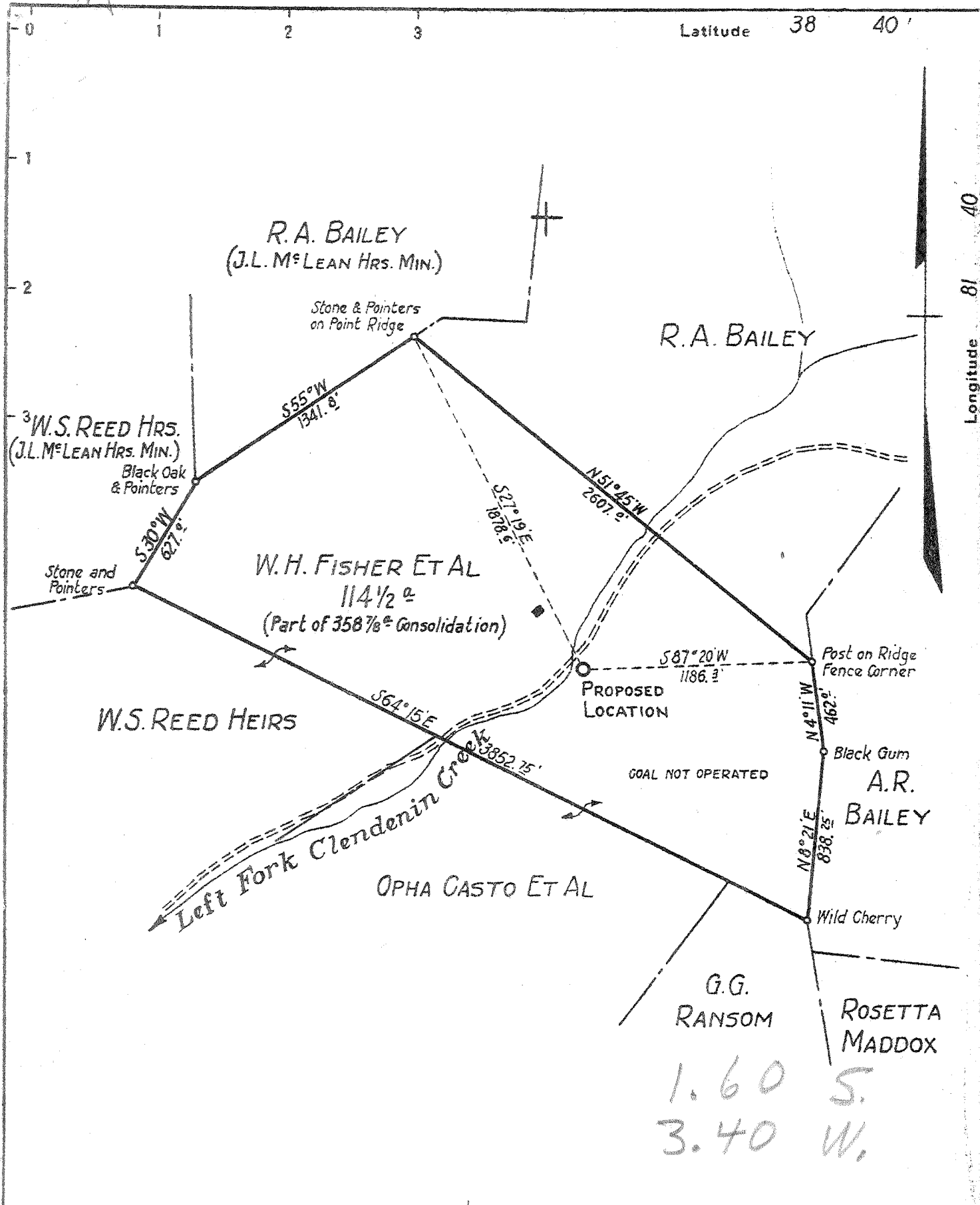


New Location...
 Drill Deeper.....
 Abandonment..... - 6/26

Company Quinnco Petroleum Inc.
 Address Box 1433, Charleston, W.V. 40475
 Farm W.H. FISHER ET AL (S.E. & M.B. Fisher)
 Tract _____ Acres 358 7/8 Lease No. 0V468
 Well (Farm) No. ONE Serial No. 516
 Elevation (Spirit Level) _____
 Quadrangle KENNA N.W.15/Kenna 7.5
 County PUTNAM District UNION
 Engineer W.S. GRAVELY
 Engineer's Registration No. _____
 File No. 3 Drawing No. _____
 Date JULY 2, 1943. Scale 1" = 660'

STATE OF WEST VIRGINIA
 DEPARTMENT OF MINES
 OIL AND GAS DIVISION
 CHARLESTON

WELL LOCATION MAP
 FILE NO. Put-249-P
47-079 Plugging
 + Denotes location of well on United States Topographic Maps, scale 1 to 62,500, latitude and longitude lines being represented by border lines as shown.
 JUN 30 1989
 - Denotes one inch spaces on border line of original tracing.



New Location, X
 Drill Deeper, ...
 Abandonment, ...

Vol. XVI, P. 876 4 NW (IS)

Company WEST VIRGINIA GAS CORPORATION
 Address P.O. Box 1433 CHARLESTON 25, W. VA.
 Farm W. H. FISHER ET AL
 Tract _____ Acres 358 7/8 Lease No. 0V468
 Well (Farm) No. ONE Serial No. 516
 Elevation (Spirit Level) _____
 Quadrangle KENNA ~~W.C.~~ W.C.
 County POTNAM District UNION
 Engineer W. S. GRAVELY
 Engineer's Registration No. _____
 File No. 3 Drawing No. _____
 Date JULY 2, 1943 Scale 1" = 660

STATE OF WEST VIRGINIA
 DEPARTMENT OF MINES
 OIL AND GAS DIVISION
 CHARLESTON

WELL LOCATION MAP
 FILE NO. PUT-249

+ Denotes location of well on United States Topographic Maps, scale 1 to 62,500, latitude and longitude lines being represented by border lines as shown.
 - Denotes one inch spaces on border line of original tracing.

Deep Well

WEST VIRGINIA DEPARTMENT OF MINES
OIL & GAS DIVISION
W E L L R E C O R D

Permit No. Put 249

Gas Well
CASING & TUBING

Company	West Virginia Gas Corp.			
Address	Box 1433, Charleston 25, W. Va.	16	21'	21
Farm	W.H. Fisher et al Acres	358	7/8"	13 3/8 579' 0
Location	Left Fork Clendenin Creek		10 1/2	940 0
Well No	One, Ser. #516 Elev. 772.64 R.F.	8 1/2	2105	0
District	Union Putnam County	7	4948	4948
Surface	W.H. Fisher et al, Liberty, W. Va.	2	3/8	4990
Mineral	Same			
Commenced	7-23-43		Perf. top	4970
Completed	10-8-43		" bot	4976
Date shot	10-8-43 Depth 4975-4981; 4989-4994			
Open flow	with 20 qts. glycerine each time		Casing cemented:	
Volume	76/10ths W in 7"		18 bags Aquagel	
Rock Pressure	3761 MCF		and 10 bags cement	
	1155 lbs. Final		behind 7"	

Surface	0	8	White Slate	3790	4015
Shell	8	38	Brown Shale	4015	4200
Slate	33	43	White Slate	4200	4632
Red Rock	43	68	Brown Shale	4632	4890
Sand	68	78	Corniferous Lime	4890	4972
Red Rock	78	88	Oriskany Sand	4972	5012
Slate	88	103	TOTAL DEPTH		5012
Sand	103	130			
Red Rock	130	160			
Sand	150	190			
Red Rock	190	240			
Sand	240	275			
Red Rock	275	315			
White Slate	315	325			
Red Rock	325	375			
Sand	375	387			
White Slate	387	400			
Red Rock	400	460			
White Slate	460	485			
Red Rock	485	590			
Sand	590	625			
Slate & Shells	625	717			
Sand	717	740			
Slate & Shells	740	765			
Red Rock	765	787			
Slate & Shells	787	827			
Sand	827	850			
White Slate	850	875			
Red Rock	875	885			
Slate & Shells	885	920			
B.D. Sand	920	968			
White Slate	968	995			
Sand	995	1020			
Slate & Shells	1020	1125			
Sand	1125	1265			
Slate & Shells	1265	1408			
Sand	1408	1428			
Slate & Shells	1428	1528			
Salt Sand	1528	1795			
Slate	1795	1797			
Little Lime	1797	1870			
Big Lime	1820	1970			
White Slate	1970	1986			
Big Injun	1986	2016			
Slate	2016	2028			
Sand	2028	2038			
Slate	2038	2042			
Sand	2042	2064			
Slate	2064	2456			
Berea Sand	2456	2470			
Slate & Shells	2470	3705			
Brown Shale	3705	3790			

Shot 10-8-43 4975 and 4989-4994'
with 20 qts. Glycerine each shot
Gauged 1,726 M.Nat. A.S. 3,761 M
Rock Pressure -Final 1155#

4890 4972
 773 773

 4117 4199