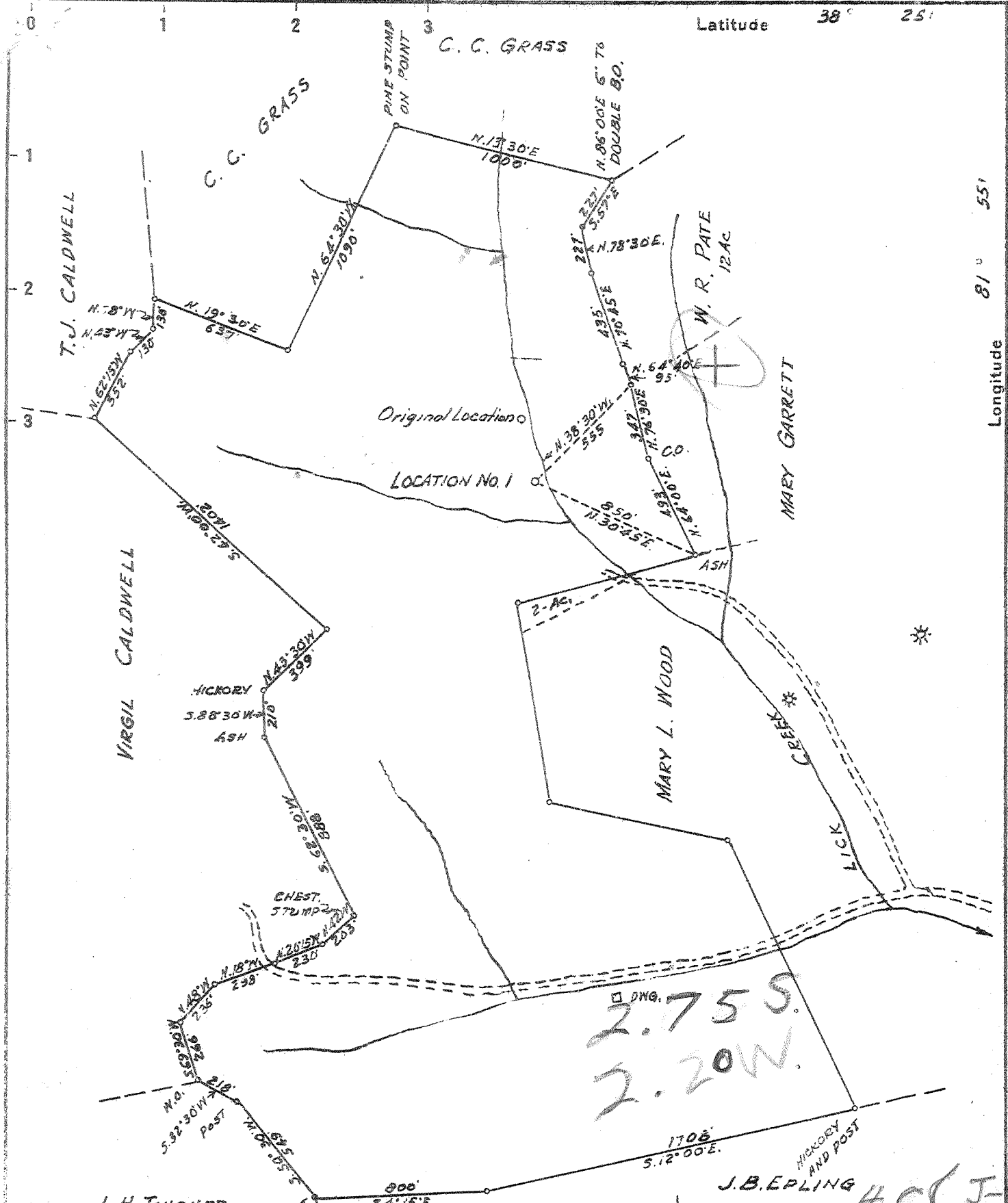


P



J. H. TINCHER  
 Vol. 44 P. 638  
 New Location   
 Drill Deeper   
 Abandonment

NOTE: This is Revision of Plat dated 4-22-42, showing New Location of No. 1. Location shown on 4-22-42 Plat will not be Drilled.

4-C (J-4)

Company	<b>PATE GAS CO.</b>
Address	<b>HAMLIN, W.VA.</b>
Farm	<b>W. R. PATE</b>
Tract	Acres <b>190</b> Lease No. _____
Well (Farm) No.	<b>1</b> Serial No. _____
Elevation (Spirit Level)	<b>774</b> ✓ WC
Quadrangle	<b>ST. ALBANS - DC</b>
County	<b>PUTNAM</b> District <b>CURRY</b>
Engineer	<b>G. C. Ewing</b>
Engineer's Registration No.	<b>309</b>
File No.	Drawing No. _____
Date	<b>4-13-43</b> Scale <b>1" = 600'</b>

STATE OF WEST VIRGINIA  
 DEPARTMENT OF MINES  
 OIL AND GAS DIVISION  
 CHARLESTON

**WELL LOCATION MAP**  
 FILE NO. **Put-176-R**  
 (CANCELLED (1942) Then Reissued by Reiss Co)

+ Denotes location of well on United States Topographic Maps, scale 1 to 62,500, latitude and longitude lines being represented by border lines as shown.

- Denotes one inch spaces on border line of original tracing.

66 ~~555~~ (211) Deep Well

WEST VIRGINIA DEPARTMENT OF MINES  
OIL & GAS DIVISION  
W E L L R E C O R D

Permit No. Put 176

St. Albans Quad

Company

Address

Farm

Location

Well No

District

Surface

Mineral

Commenced

Completed

Date shot

Open flow

Volume

Fresh Water

Tincher Gas Company

Hamlin, W.Va.

W.R. Pate Acres --

Lick Creek

1 Elev. <sup>725</sup>

Curry Putnam County

W.R. Pate, Hurricane, W.Va.

May 20, 1943

Nov. 18, 1943

Oct 1 with 9,000 lbs. Detonite

2/10ths W in 2" <sup>APPROXIMATELY</sup>

67,000 C.F. <sub>3368-70</sub>

385, 515

Gas Well  
CASING & TUBING

10                      65  
6 5/8                    1780

Red Mud	0	75
Sand	75	80
Gray Mud	80	103
Red Rock	103	147
Lime Shells	157	260
Yellow Sand	260	290
White Slate	290	365
Sand	365	390
Slate	390	450
Sand	450	502
Slate	502	508
Sand	508	625
White Slate	625	635
Sand	635	657
White Slate	657	660
Sand	660	700
Lime Shells	700	710
Sand	710	715
Lime Shell	715	720
Sand	720	735
Lime Shells	735	750
Sand	750	758
Lime Shells	758	820
Sand	820	890
Lime Shells	890	920
Slate	920	940
Lime Shells	940	1020
Slate	1020	1028
Gas Sand	1028	1071
Slate	1071	1074
Salt Sand	1074	1505
Slate	1505	1510
Little Lime	1510	1522
Pencil Cave	1522	1524
Big Lime	1524	1714
Big Injun Sand	1714	1768
Shells	1768	1787
Slate & Shells	1787	1880
Big Shell	1880	1965
Slate & Shells	1965	2193
Brown Shale	2193	2213
Berea Sand	2213	2238
Slate & Shells	2238	3395
Brown Shale	3395	3460
Gray Shale & Slate	3460	3565
Brown Shale	3565	3760
Slate & Shells	3760	4125
Brown Shale	4125	4268
Corniferous Lime		4268
TOTAL DEPTH		4268

4268  
775  
-----  
3493