

Company	REISHMAN O. & G. CO.
Address	CHARLESTON, W.VA.
Farm	PIKE HEIRS
Tract	Acres <u>230</u> Lease No. _____
Well (Farm) No.	<u>1</u> Serial No. _____
Elevation (Spirit Level)	<u>1018.6</u>
Quadrangle	STALBANS - WC
County	PUTNAM District CURRY
Engineer	G.E. Krebe
Engineer's Registration No.	<u>9</u>
File No.	<u>11766</u> Drawing No. _____
Date	<u>5-5-42</u> Scale 1" = 500 FT.

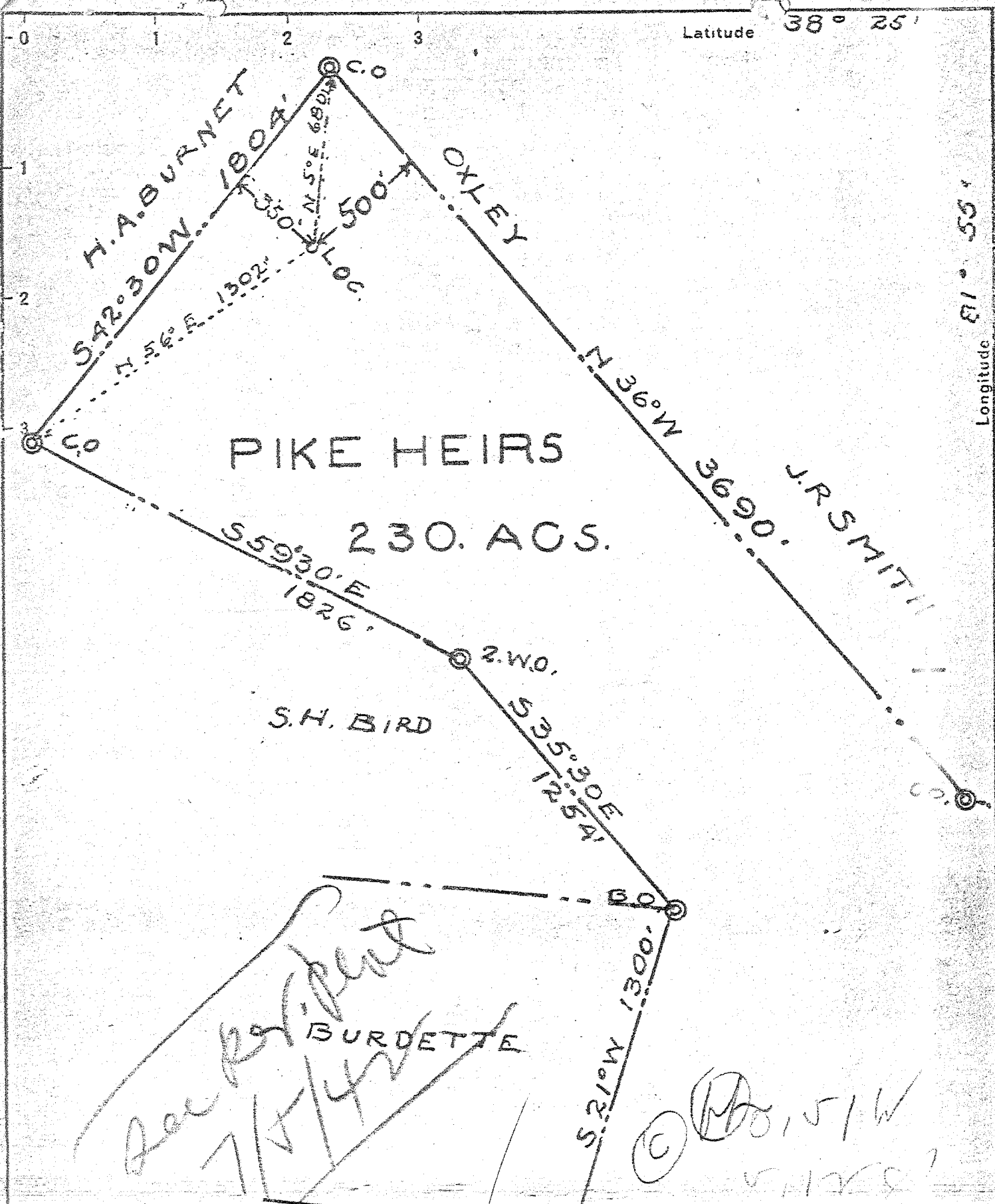
STATE OF WEST VIRGINIA  
DEPARTMENT OF MINES  
OIL AND GAS DIVISION  
CHARLESTON

WELL LOCATION MAP  
FILE NO. PUT-137-R

+ Denotes location of well on United States Topographic Maps, scale 1 to 62,500, latitude and longitude lines being represented by border lines as shown.

- Denotes one inch spaces on border line of original tracing.

6-6-42  
Deep Well



New Location  SURVEYED BY O.D. AMICK C.E. SEP - 8 1941  
 Drill Deeper   
 Abandonment  COAL NOT OPERATED

Company REISHMAN O.&G. CO  
 Address CHARLESTON, W.VA.  
 Farm PIKE HEIRS  
 Tract 230 Acres 1 Lease No. \_\_\_\_\_  
 Well (Farm) No. 1 Serial No. \_\_\_\_\_  
 Elevation (Spirit Level) 993.6  
 Quadrangle ST. ALBANS  
 County PUTNAM District CURRY  
 Engineer C.E. KREBS,  
 Engineer's Registration No. 9  
 File No. 11679 Drawing No. \_\_\_\_\_  
 Date 7-6-40 Scale 1" = 500'

STATE OF WEST VIRGINIA  
 DEPARTMENT OF MINES  
 OIL AND GAS DIVISION  
 CHARLESTON

WELL LOCATION MAP  
 FILE NO. PUT-137

+ Denotes location of well on United States Topographic Maps, scale 1 to 62,500, latitude and longitude lines being represented by border lines as shown.  
 - Denotes one inch spaces on border line of original tracing.

WEST VIRGINIA DEPARTMENT OF MINES  
OIL & GAS DIVISION  
W E L L R E C O R D

Permit No. Put 137 R  
St. Albans Quad.

Gas Well  
CASING & TUBING

Company	Reishman Oil & Gas Company		
Address	717 Peoples Bldg., Charleston, W.Va.		
Farm	S.N. Pike Heirs Acres 230	10	23½ 23½
Location	Raccoon Br. of Trace Fork	8½	564 None
Well No	1 Elev. 1018	6 5/8	1936 None
District	Curry Putnam County	5 3/16	2349 2349
Surface	Pike Heirs c/o S.N. Jones Tr. Cincinnati, Ohio		No coal
Mineral	Pike Heirs- S.N. Jones, Tr. Cincinnati, Ohio		
Commenced	July 24, 1942		
Completed	Oct. 26, 1942		
Date shot	Oct. 29, 1942	Depth 3428 to 4478	
Open Flow	25/10ths W in 2"		
Volume	225 M C F		
Rock Pressure	120 lbs. 1 hrs.		
Oil	None		
Fresh Water	775'		
Salt Water	1175'		

Red Rock	0	25	
Sand	25	50	
Red Rock	50	110	
Lime & Slate	110	115	
Red Rock	115	135	
Blue Slate	135	180	
Red Rock	180	190	
Slate	190	215	
Red Rock	215	230	
Blue Slate	230	250	
Red Rock	250	270	
Blue Slate	270	295	
Sand	295	325	
Slate & Sand	325	1123	
- Salt Sand	1123	1495	
Slate	1495	1500	
- Maxon Sand	1500	1618	
Slate	1618	1622	
- Little Lime	1622	1669	
- Pencil Cave	1669	1674	
- Big Lime	1674	1845	
- Keener Sand	1845	1865	
- Big Injun	1865	1908	
Broken Sand	1908	1923	
Black Lime	1923	1949	
Slate	1949	2025	
Lime	2025	2045	
Slate	2045	2278	
Shale Br	2278	2283	
Slate	2283	2347	
- Berea	2347	2372	
Slate	2372	2540	
Lime Shell	2540	2553	
Slate Wh	2553	3361	Gas 2353-57
Lime	3361	3364	
Slate	3364	3503	
Shell	3503	3513	
Shale Br	3513	3553	Gas 3503-09
Shale Gr	3553	3650	
Shale Br	3650	3660	
Shale Gr	3660	3698	
Shale Br	3698	3765	Gas 3743-3753
Shale Gr	3765	3771	
Shale Br	3771	3926	
Shale Gr	3926	4277	
Shale Br	4277	4439	
- Shale Bk	4439	4476	
- Lime Bk	4476	4478	Total Depth

4476  
1018  

---

3458