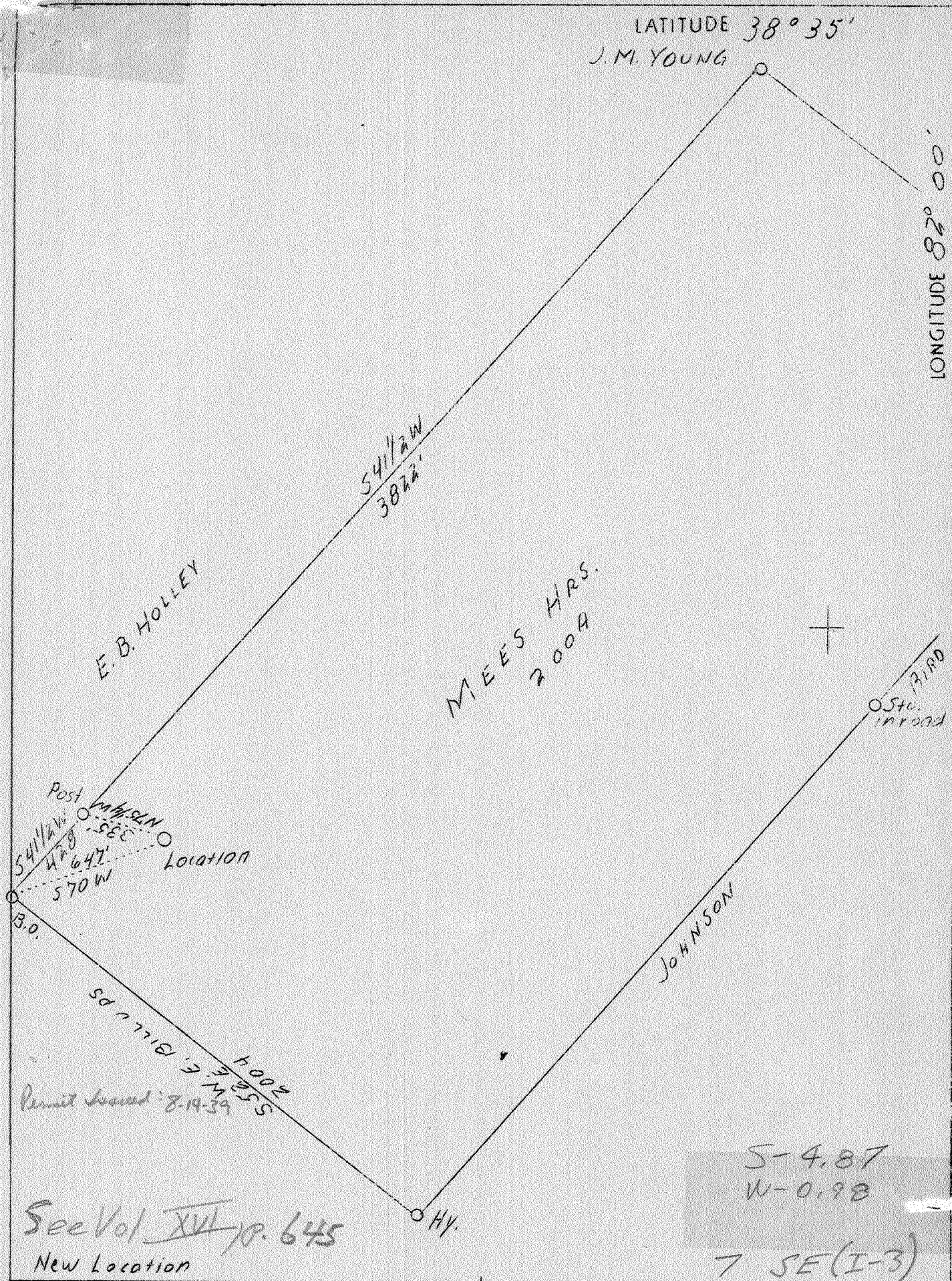


P

LATITUDE 38° 35'
J.M. YOUNG

LONGITUDE 82° 00'



See Vol. XVI p. 645
New Location

| | |
|-----------------|---|
| Company | Teavee Oil & Gas, Inc. |
| Address | 1901 Kanawha Valley Bg. Charleston, W. Va. |
| Farm | Mees Bros. |
| Acres | 200 |
| Well (Farm) No. | 1 |
| Serial No. | T.V. 8 |
| Elevation (SL) | 986 Gr. |
| Quadrangle | Glenwood - SE |
| County | Putnam |
| District | Teays Valley |
| Engineer | John Galpin |
| Eng. Reg. No. | 875 |
| Date | Aug. 2, 1939 |
| Scale | 1" = 500' |

STATE OF WEST VIRGINIA
 Department of Mines
 OIL & GAS DIVISION
 Charleston

WELL LOCATION MAP

File No. PUT-51

x Denotes location of well on U. S. Topographic Maps, scale 1 to 62,500, latitude and longitude lines being represented by border lines as shown.

- Denotes one inch spaces on border line of original tracing.

3-6-210

Deep Well ✓

WEST VIRGINIA DEPARTMENT OF MINES
OIL & GAS DIVISION
W E L L R E C O R D

Permit No. Put-51
Glenwood Quad.

Gas Well

Company: Eaves Oil & Gas, Inc.
Address: Charleston, W. Va.
Farm: Nees Heirs - ACRES 200
Location: Hurricane Creek
Well No.: 1 - Serial B ELEV. 1001
District: Neaps Valley - Putnam County
Surface & Elevation: Nees Heirs, Pt. Pleasant, W. Va.
Commenced: Sept. 11, 1939
Completed: March 14, 1940
Shot: 3/14/40 - Depth 4115-4185
Volume: 40,000 c.f.
Rock Pressure: 600 lbs. 93' wa.
Fresh Water: None
Salt Water: 1013 - hole full

CASING & TUBING

| | | |
|--------|--------|--------|
| 14 OD | 10-6 | 19-6 |
| 10 | 34-11 | 37-11 |
| 8-1/4 | 1082-2 | 1100 |
| 6-5/8 | 1972 | 1972 |
| 5-3/16 | 170 | 170 |
| 2 | 2199-2 | 2715-2 |

Procter - Hook Drill
Size - 3 x 2 x 10
Depth set - 2175
Coal at:
1326' 12"

| | | | | | | | | |
|------------|-------|---|------|------|--------------------|------|------|---------|
| Mud | rd | s | 0 | 20 | Berea Sand | 2468 | 2469 | |
| Sand | | | 20 | 52 | Slate | 2469 | 2579 | |
| Mud | rd | s | 52 | 65 | Shall | 2550 | 2575 | |
| Sand | | | 65 | 71 | Slate | 2575 | 2590 | Sh. Gas |
| Mud | rd | s | 71 | 76 | | | | 2625 |
| Slate | bl | | 76 | 110 | Shale | 3560 | 3520 | |
| Mud | rd | s | 110 | 124 | Slate | 3720 | 3825 | |
| Sand | | | 124 | 129 | Shall | 3825 | 3845 | |
| Slate | bl | h | 129 | 161 | Slate | 3845 | 3935 | |
| Sand | | | 161 | 176 | Shale | 3935 | 3975 | Sh. Gas |
| Shale | rd | h | 176 | 183 | | | | 3979 |
| Slate | bl | h | 183 | 250 | White Slate | 3906 | 4250 | |
| Sand | | | 250 | 266 | Shale | 4250 | 4282 | |
| Shale | rd | h | 266 | 271 | Line - Considerous | 4282 | 4270 | |
| Slate | bl | h | 271 | 276 | Sand - Ordinary | 4414 | 4432 | Sh. Gas |
| Shale | rd | s | 276 | 281 | | | | 4415 |
| Slate | wh | s | 281 | 320 | Line | 4432 | 4450 | |
| Slate | bl | s | 320 | 330 | Line | 4450 | 4450 | |
| Sand | | | 330 | 340 | Total Depth | | 4490 | |
| Slate | bl | h | 340 | 431 | | | | |
| Sand | | | 431 | 445 | | | | |
| Slate | bl | h | 445 | 451 | | | | |
| Slate | rd | h | 451 | 468 | | | | |
| Slate | wh | s | 468 | 712 | | | | |
| Slate | bl | s | 712 | 850 | | | | |
| Sand | | | 850 | 912 | | | | |
| Slate | | | 912 | 995 | | | | |
| Sand | | | 995 | 1013 | FTW | | | |
| Sand | | | 1013 | 1104 | | | | |
| Slate | wh | s | 1104 | 1122 | | | | |
| Slate | wh | s | 1122 | 1136 | | | | |
| Sand | | | 1136 | 1220 | | | | |
| Slate | wh | s | 1220 | 1240 | | | | |
| Sand | | | 1240 | 1257 | | | | |
| Slate | wh | s | 1257 | 1265 | | | | |
| Sand | | | 1265 | 1379 | Sh. Gas | | | |
| | | | | | 1350 | | | |
| Sand | wh | h | 1370 | 1640 | | | | |
| Line | 13 | h | 1640 | 1952 | | | | |
| Sand | | h | 1952 | 2090 | | | | |
| Slate | wh | s | 2090 | 2136 | | | | |
| Line Sholl | Shole | | 2136 | 2455 | | | | |
| Shale | wh | s | 2455 | 2463 | | | | |

1952
 1840

 112
 1952
 1001

 951
 4362
 1001

 3361