

BENCH MARK DESCRIPTION

U.S.G.S. Standard Disc 5st In Concrete Mon. Between Roads Near Lowgap & A Gate Stamped N° 42 JEA-1957 Elev. 2998.70'

ACCURACY One Part In 200

- Fracture Before 6/5/29
- New Location
- Drill Deeper
- Redrill
- Abandonment

I, the undersigned, hereby certify that this map is correct to the best of my knowledge and belief and shows all the information required by Paragraph 5 of the Rules and Regulations of the Oil and Gas Section of the Mining Laws of West Virginia.

The accuracy of this survey is within the limits and as prescribed in Paragraph 5 by the Oil and Gas Division of the Department of Mines Regulations.

Company ATLANTIC SEABOARD CORP.
 Address CHARLESTON, W. VA.
 Farm TERRA ALTA LAND CO. ET AL.
 Tract _____ Acres 1555 Lease No. AS-372-B-
 Well (Farm) No. _____ Serial No. 7533
 Elevation (Spirit Level) 2254.80'
 Quadrangle KINGWOOD
 County PRESTON District UNION
 Engineer Alvin Handman
 Engineer's Registration No. 2330
 File No. 170-129 Drawing No. _____
 Date MAR. 10, '71 Scale 1" = 400'

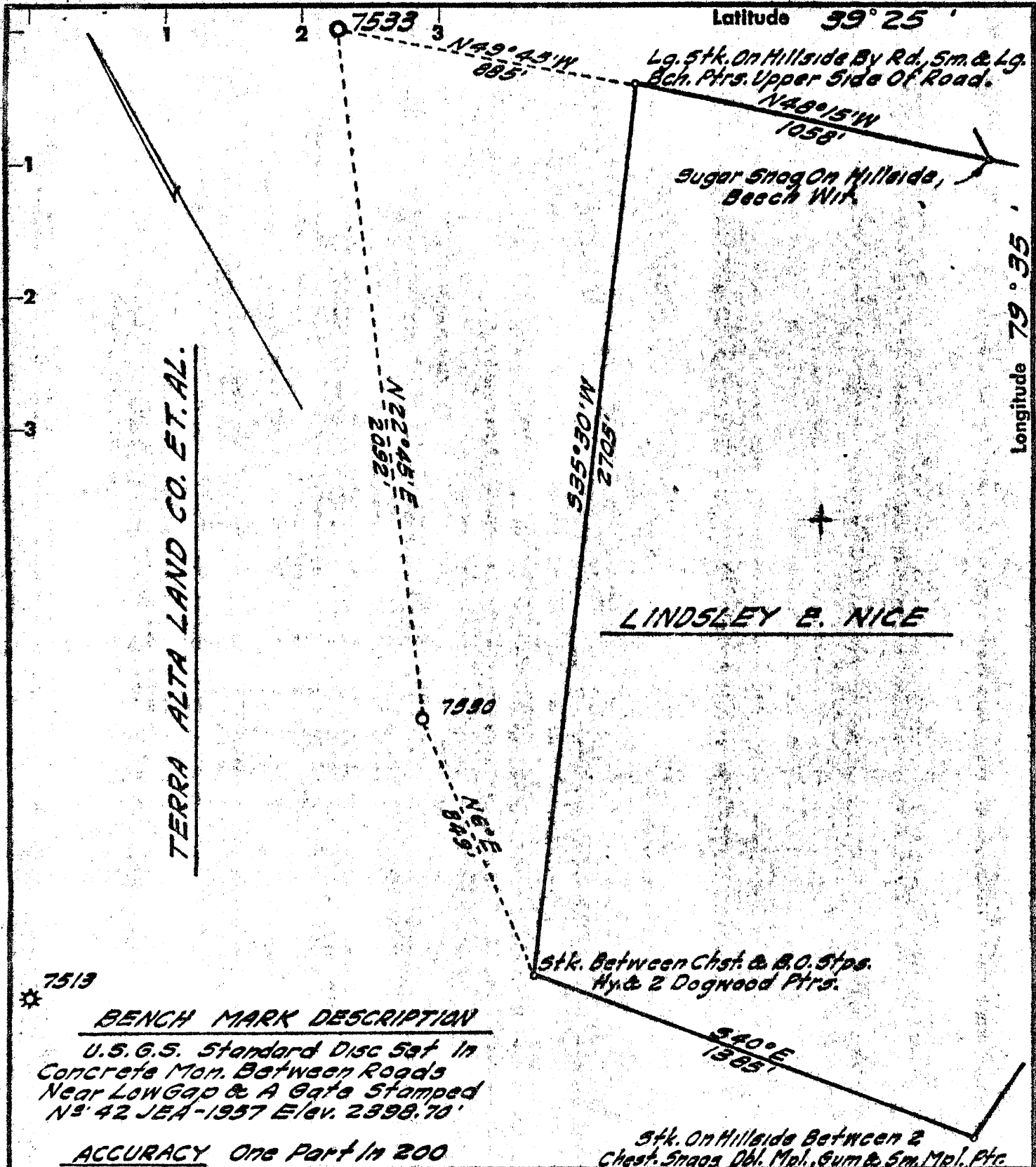
STATE OF WEST VIRGINIA
 DEPARTMENT OF MINES
 OIL AND GAS DIVISION
 CHARLESTON

WELL LOCATION MAP
 FILE NO. Proc-159
 Connected: Tie Control With 7530

+ Denotes location of well on United States Topographic Maps, scale 1 to 62,500 latitude and longitude lines being represented by border lines as shown.

- Denotes one inch spaces on border line of original tracing.

5/5/71 CEN



★ 7513

BENCH MARK DESCRIPTION

U.S.G.S. Standard Disc Set In Concrete Mon. Between Roads Near Low Gap & A Gate Stamped N^o 42 JEA-1957 Elev. 2398.70'

ACCURACY One Part In 200

- Fracture Before 6/5/29
- New Location
- Drill Deeper
- Redrill
- Abandonment

I, the undersigned, hereby certify that this map is correct to the best of my knowledge and belief and shows all the information required by Paragraph 5 of the Rules and Regulations of the Oil and Gas Section of the Mining Laws of West Virginia.
The accuracy of this survey is within the limits and as prescribed in Paragraph 5 by the Oil and Gas Division of the Department of Mines Regulations.

Company ATLANTIC SEABOARD CORP.
 Address CHARLESTON, W. VA.
 Farm TERRA ALTA LAND CO. ET. AL.
 Tract _____ Acres 1555 Lease No. 15-312-B
 Well (Farm) No. _____ Serial No. 7533
 Elevation (Spirit Level) 2254.80'
 Quadrangle KINGWOOD
 County PRESTON District UNION
 Engineer Wm. E. Headman
 Engineer's Registration No. 2330
 File No. 170-129 Drawing No. _____
 Date MAR. 10, '71 Scale 1" = 400'

STATE OF WEST VIRGINIA
 DEPARTMENT OF MINES
 OIL AND GAS DIVISION
 CHARLESTON

WELL LOCATION MAP
 FILE NO. Pre-159

+ Denotes location of well on United States Topographic Maps, scale 1 to 62,500 latitude and longitude lines being represented by border lines as shown.
 — Denotes one inch spaces on border line of original tracing.



RECEIVED

STATE OF WEST VIRGINIA
DEPARTMENT OF MINES
OIL AND GAS WELLS DIVISION

JAN 26 1972

- Rotary
- Spudder
- Cable Tools
- Storage

Quadrangle Kingwood
Permit No. Pres. 159

WELL RECORD

Oil or Gas Well Gas
(KIND)

Company Columbia Gas Transmission Corporation
Address P. O. Box 1067, Elkins, W. Va.
Farm Terra Alta Land Company Et. Al. Acres. 1555
Location (waters) Big Run
Well No. X-76S 7533 Elev. 2255'
District Union County Preston
The surface of tract is owned in fee by _____
Address _____
Mineral rights are owned by _____
Address _____
Drilling commenced June 4, 1971
Drilling completed June 22, 1971
Date Shot _____ From _____ To _____
With _____
Open Flow /10ths Water in _____ Inch
/10ths Merc. in _____ Inch
Volume Show _____ Cu. Ft.
Rock Pressure _____ lbs. _____ hrs.
Oil _____ bbls., 1st 24 hrs.
WELL ACIDIZED (DETAILS) (See Reverse Side)
WELL FRACTURED (DETAILS) _____

Casing and Tubing	Used in Drilling	Left in Well	Packers
Size	Ground	Level	Kind of Packer
16.			
13 3/8"	28'	28'	
10.			Size of
8 1/4 9 5/8"	2183'	2183'	Depth set
6 5/8 7"	5390'	5390'	
5 3/16			
4 1/2			
3			Perf. top (See
2 3/8"	5710'	5710'	Perf. bottom Revers
Liners Used			Perf. top Side)
			Perf. bottom

Attach copy of cementing record.
CASING CEMENTED _____ SIZE _____ No. Ft. _____
Amount of cement used (bags) (See Reverse Side)
Name of Service Co. Halliburton and Dowell
COAL WAS ENCOUNTERED AT None FEET _____ INCHES _____
FEET _____ INCHES _____ FEET _____ INCHES _____
FEET _____ INCHES _____ FEET _____ INCHES _____

RESULT AFTER TREATMENT (Initial open Flow or bbls.) 1,237 Mcf
ROCK PRESSURE AFTER TREATMENT 1450# HOURS 1
Fresh Water _____ Feet _____ Salt Water _____ Feet _____
Producing Sand Chert and Oriskany Depth _____

Formation	Color	Hard or Soft	Top	Bottom	Oil, Gas or Water	Depth	Remarks
Shale and Siltstone			0	4913	Measured	from K.B.	
✓ Tully Lime			4913	4941			
Shale			4941	5377			
✓ Onondaga Lime			5377	5399			
✓ Chert - HUNTERSVILLE			5399	5534			
✓ Shale - NEED MORE			5534	5543			
✓ Oriskany Sand			5543	5675			
✓ Helderberg Lime			5675				
Total Depth				5714'	5377	5543	5675
				485	2255	2255	2255
					3122	3288	3420

(over)

FEB 7 1972

Formation	Color	Hard or Soft	Top / 0	Bottom	Oil, Gas or Water	Depth Found	Remarks
NOTE:							
13 3/8"	48#/ft.,	H-40 casing cemented to surface with 25 sacks cement plus 2% CaCl.	June 4, 1971.	28' ground level, 45' kelly bushing.			
9 5/8"	36#/ft.,	K-55 casing cemented to surface with 625 sacks of Gilsonite plus 2% CaCl.	June 11, 1971.	Casing set at 2183' ground level, 2200' kelly bushing, 2179' threads off, 2196' threads on.			
7"	23#/ft.,	K-55, Seal-lok casing cemented in 1000' with 220 cu. feet of Dowells RFC cement plus Kolite, June 19, 1971. Gel drilling mud to surface with 1 drum Baroids B-33. Casing set 4' in Chert. Casing set at 5390' ground level, 5460' kelly bushing, 5428' threads off, 3475' threads on.					
2 3/8"	4.6#/ft.,	J-55, Seal-lok tubing run to T.D., (1) Baker Model "J" ported seating nipple, (1) Baker BFC Model "L" sliding sleeve. Sliding sleeve is 432' off bottom. Sliding sleeve is 432' off bottom. June 22, 1971. 5710' ground level, 5722' kelly bushing, 5705' threads off, 5746' threads on.					
Perforations:							
	Chert and Oriskany	open hole					
Logging:							
	Gamma Ray - Collar Log	(0' - 5714')	June 22, 1971				
Stimulation:							
	June 22, 1971						
		Killed well with 300 barrels of fresh water.					
	July 8, 1971						
		Halliburton treated well using 1500 gallons 20% HCL acid and 200 sacks of 10-20 sand, 160 sacks of 20-40 sand, MY-T-Frac. process. 700 barrels of fresh water. Displaced all but 50 barrels of 3#/gal. gel into formation. Shut in 3600#.					
	July 9, 1971						
		Unloaded well, unable to gauge wet.					
	July 13, 1971						
		Unloaded well, wet. "10/10" mercury in 2" = 492 M.					
	July 16, 1971						
		1500# rock pressure, "24/10" mercury in 2" = 792 M. after 1 hour. Wet.					
	July 20, 1971						
		1450# rock pressure "4/10" mercury in 4" = 1.237 M dry. Final open flow.					

Date January 20, 1972

APPROVED Columbia Gas Transmission Corporation Owner

By [Signature]
(Title)
Production and Storage Superintendent