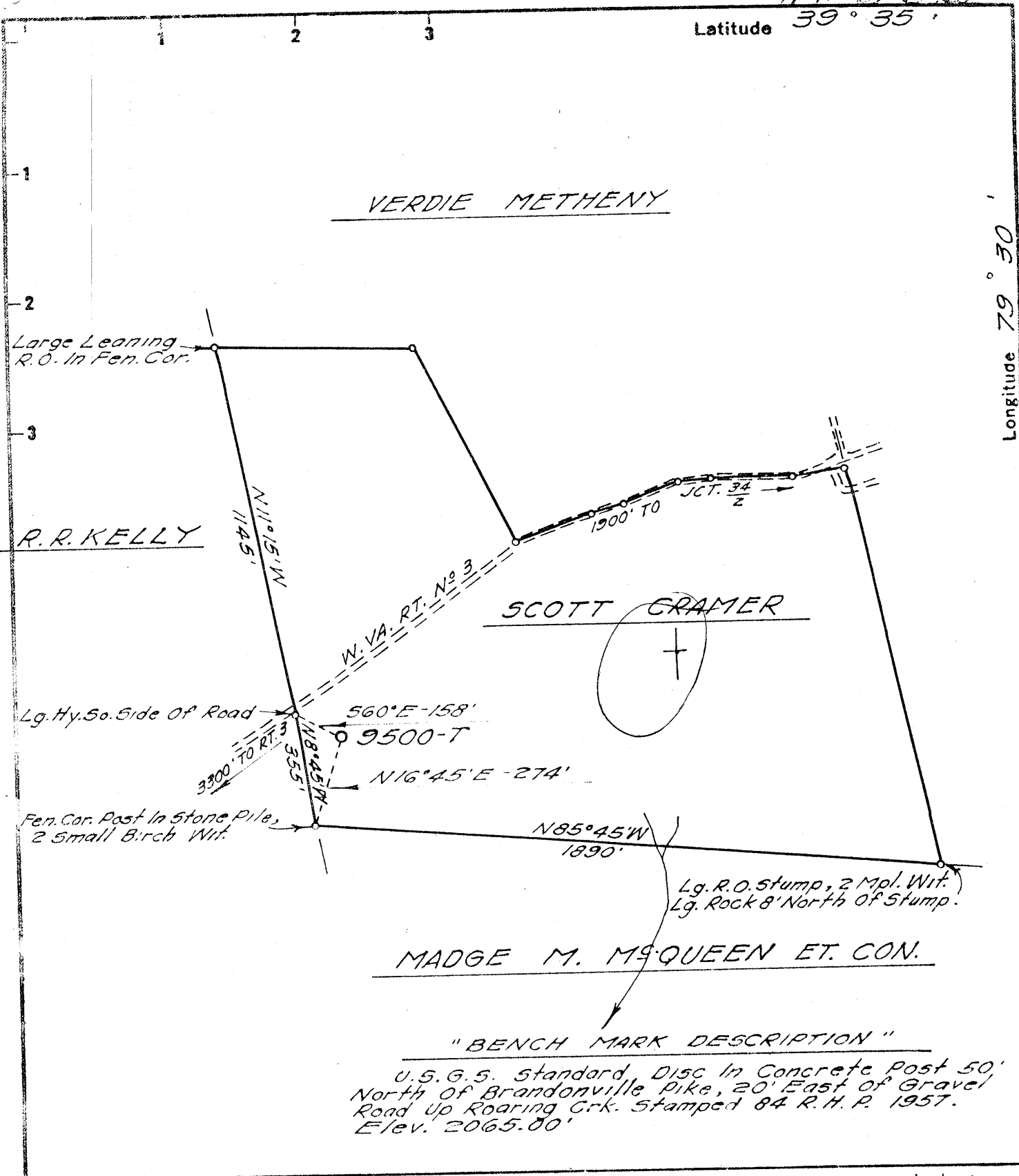


11-12-68 DADD

Latitude 39° 35'

Longitude 79° 30'



- Fracture Before 6/5/29
  - New Location
  - Drill Deeper
  - Redrill
  - Abandonment
- Issued 2-24-69

I, the undersigned, hereby certify that this map is correct to the best of my knowledge and belief and shows all the information required by Paragraph 5 of the Rules and Regulations of the Oil and Gas Section of the Mining Laws of West Virginia.  
 The accuracy of this survey is within the limits and as prescribed in paragraph 5 by the Oil and Gas Division of the Department of Mines Regulations.

Company ATLANTIC SEABOARD CORP.  
 Address CHARLESTON, W. VA.  
 Farm SCOTT CRAMER, ET. AL.  
 Tract \_\_\_\_\_ Acres 498.98 Lease No. 45-809 et.al.  
 Well (Farm) No. 9500-T Serial No. 9500-T  
 Elevation (Spirit Level) 2758.00'  
 Quadrangle BRUCETON ~~WV 15~~ SE  
 County PRESTON District PORTLAND  
 Engineer Adrian E. Hargraves  
 Engineer's Registration No. 2330  
 File No. 174-139 Drawing No. \_\_\_\_\_  
 Date OCT 14, 68 Scale 1" = 400'

STATE OF WEST VIRGINIA  
 DEPARTMENT OF MINES  
 OIL AND GAS DIVISION  
 CHARLESTON

**WELL LOCATION MAP**  
 FILE NO. 174-133-P

+ Denotes location of well on United States Topographic Maps, scale 1 to 62,500 latitude and longitude lines being represented by border lines as shown.  
 - Denotes one inch spaces on border line of original tracing

11-12-68 DADD

Latitude 39° 35'

Longitude 79° 30'

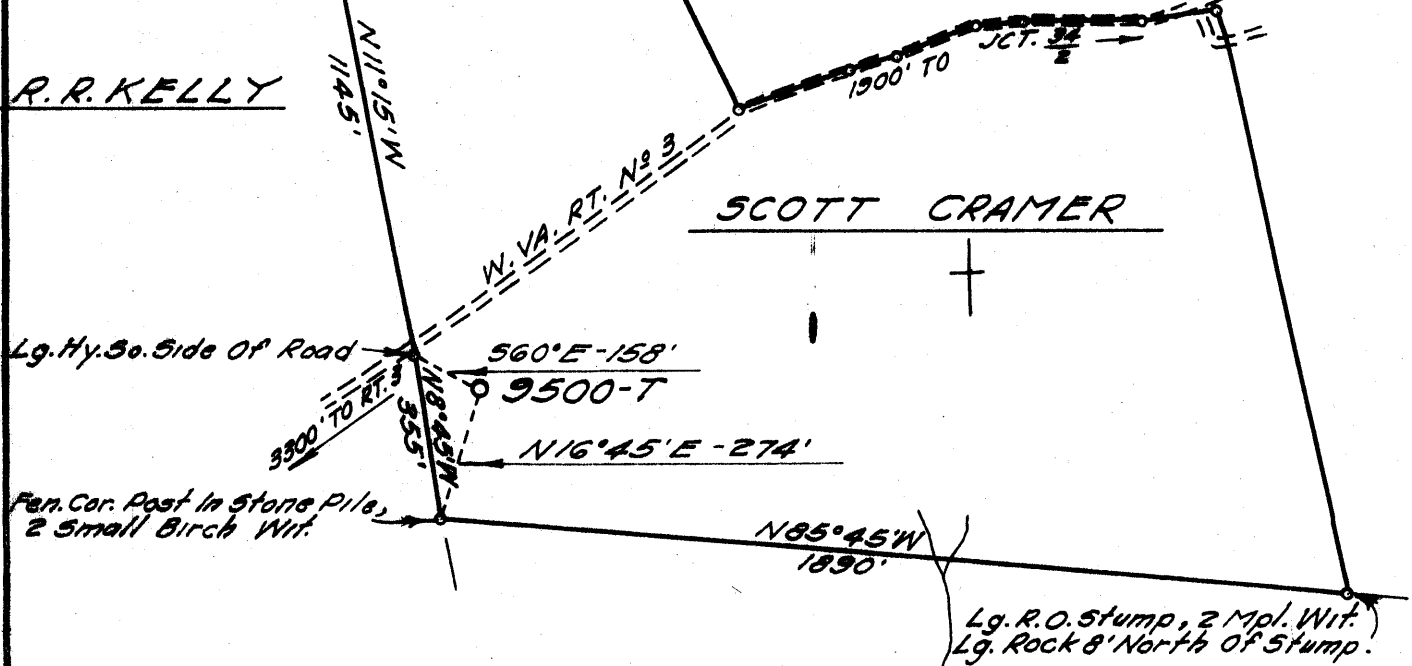
VERDIE METHENY

Large Leaning R.O. in Fen. Cor.

R. R. KELLY

SCOTT CRAMER

MADGE M. McQUEEN ET. CON.



"BENCH MARK DESCRIPTION"

U.S.G.S. Standard, Disc in Concrete Post 50' North of Brandonville Pike, 20' East of Gravel Road up Roaring Crk. Stamped 84 R.H.P. 1957. Elev. 2065.80'

- Fracture Before 6/5/29
- New Location
- Drill Deeper
- Redrill
- Abandonment

I, the undersigned, hereby certify that this map is correct to the best of my knowledge and belief and shows all the information required by Paragraph 5 of the Rules and Regulations of the Oil and Gas Section of the Mining Laws of West Virginia. The accuracy of this survey is within the limits and as prescribed in paragraph 5 by the Oil and Gas Division of the Department of Mines Regulations.

Company ATLANTIC SEABOARD CORP.  
 Address CHARLESTON, W. VA.  
 Farm SCOTT CRAMER, ET. AL.  
 Tract \_\_\_\_\_ Acres 498.29 Lease No. A5-809 et al.  
 Well (Farm) No. 9500-T Serial No. 9500-T  
 Elevation (Spirit Level) 2758.00'  
 Quadrangle BRUCETON ~~36~~ 36  
 County PRESTON District PORTLAND  
 Engineer Urban E. Hargraves  
 Engineer's Registration No. 2330  
 File No. 174-139 Drawing No. \_\_\_\_\_  
 Date OCT. 14, '68 Scale 1" = 400'

STATE OF WEST VIRGINIA  
 DEPARTMENT OF MINES  
 OIL AND GAS DIVISION  
 CHARLESTON

**WELL LOCATION MAP**  
 FILE NO. Res-133

+ Denotes location of well on United States Topographic Maps, scale 1 to 62,500 latitude and longitude lines being represented by border lines as shown.  
 - Denotes one inch spaces on border line of original tracing.



STATE OF WEST VIRGINIA  
DEPARTMENT OF MINES  
OIL AND GAS DIVISION

Rotary   
Spudder   
Cable Tools   
Storage

Quadrangle Bruceton Mills

WELL RECORD

Permit No. PRES-133

Oil or Gas Well Dry Hole  
(KIND)

Company	Address	Farm	Location (waters)	Well No.	District	The surface of tract is owned in fee by	Mineral rights are owned by	Drilling commenced	Drilling completed	Date Shot	With	Open Flow	Volume	Rock Pressure	Oil	WELL FRACTURED (DETAILS)	WELL FRACTURED (DETAILS)	RESULT AFTER TREATMENT (Initial open Flow or bbls.)	ROCK PRESSURE AFTER TREATMENT	Fresh Water	Producing Sand	
Atlantic Seaboard Corp.	P.O. Box 1273 Charleston, W. Va. 25325	Scott Cramer, et al	Dority Run	9500 - T	Portland	Margaret L. Cramer, et al	Margaret L. Cramer, et al	12-28-68	2-4-69			100/10ths Water in 1 Inch	105.36 MCF	300 lbs. 40 hrs.		With 1720 bbls. 3% Hcl, 58,000# 20-40 frac. sand and 8 perf. balls.				90'		
		Acres 498.98 Merg		Elev. 2758.00'	County Preston	Address Terra Alta, W.Va. 26764	Address Terra Alta, W.Va. 26764			From	To											

Casing and Tubing	Used in Drilling	Left in Well	Packers
16			Kind of Packer
13 3/8	27.45' Cemented	15	sacks
10			Size of
8 1/2	2294.07' Cemented with		750 sacks
8 7/8	8117.94' Cemented with		157 sacks
			Depth set
5 3/16	556.15' Cemented with		96 sacks
3			Perf. top
2			Perf. bottom
Liners Used			Perf. top
			Perf. bottom

Attach copy of cementing record.  
 CASING CEMENTED SIZE No. Ft. Da  
 Amount of cement used (bags)  
 Name of Service Co.  
 COAL WAS ENCOUNTERED AT FEET INCHES  
 FEET INCHES FEET INCHES  
 FEET INCHES FEET INCHES

WELL FRACTURED (DETAILS) With 1720 bbls. 3% Hcl, 58,000# 20-40 frac. sand and 8 perf. balls.  
 RESULT AFTER TREATMENT (Initial open Flow or bbls.)  
 ROCK PRESSURE AFTER TREATMENT HOURS  
 Fresh Water 90' Feet Salt Water Feet  
 Producing Sand Depth

Formation	Color	Hard or Soft	Top	Bottom	Oil, Gas or Water	Depth	Remarks
Surface			0	10	Water 90' Fresh		
Siltstone			10	90			
Shale			90	1060			
Sandstone			1060	2300			
Shale			2300	4330			
Siltstone			4330	4540			
Shale & Siltstone			4540	7520			
✓ Tully Limestone			7520	7536			
Shale			7536	8023			
✓ Onondaga Limestone			8023	8044			
✓ Chert			8044	8173	Gas Chert show		
✓ Shale			8173	8184			
✓ Oriskany Sandstone			8184	8299			
✓ Helderberg Limestone			8299	-			
Total Depth			8383'				

LOGGING & PERFORATING  
 Sidewall Neutron Porosity Log  
 Dual Induction  
 Temperature  
 Compensated Formation Density  
 Gamma Ray  
 Synergetic  
 Gas Detection  
 Hydrocarbon Detection

