

CHARGE: Gas - App - 4074 - 71 GWT

NOTES:
 ELEVATION: U.S.G.S. SPOT ELEVATION INTERSECTION W.V. RTE. 51 & W.V. RTE. 51/5 1884'
 ELEV. = 1885.00
 NO COAL OPERATIONS IN THIS AREA

FILE NO. _____
 DRAWING NO. _____
 SCALE 1" = 500'
 MINIMUM DEGREE OF ACCURACY 1:200
 PROVEN SOURCE OF ELEVATION SEE ABOVE

I THE UNDERSIGNED, HEREBY CERTIFY THAT THIS PLAT IS CORRECT TO THE BEST OF MY KNOWLEDGE AND BELIEF AND SHOWS ALL THE INFORMATION REQUIRED BY LAW AND THE REGULATIONS ISSUED AND PRESCRIBED BY THE DEPARTMENT OF ENERGY.
 (SIGNED) _____
 R.P.E. 2236 L.L.S. 798



STATE OF WEST VIRGINIA
 DEPARTMENT OF ENERGY
 OIL AND GAS DIVISION



DATE 27 JAN, 1995
 OPERATOR'S WELL NO. 7417
 API WELL NO. _____

WELL TYPE: OIL _____ GAS X LIQUID INJECTION _____ WASTE DISPOSAL _____
 (IF "GAS," PRODUCTION _____ STORAGE X DEEP _____ SHALLOW _____
 LOCATION: ELEVATION 1880.31 WATER SHED SALT LICK RUN

DISTRICT PORTLAND COUNTY PRESTON
 QUADRANGLE TERRA ALTA COORDINATES LAT: 39°25'00" LONG: 79°34'52"

SURFACE OWNER RALPH E. & JOANN LEWIS ACREAGE _____
 OIL & GAS ROYALTY OWNER RALPH E. & JOANN LEWIS LEASE ACREAGE 140.95
 COAL OWNER _____ LEASE NO. _____

PROPOSED WORK: DRILL _____ CONVERT _____ DRILL DEEPER _____ REDRILL _____ FRACTURE OR STIMULATE _____ PLUG OFF OLD FORMATION _____ PERFORATE NEW FORMATION _____ OTHER PHYSICAL CHANGE IN WELL (SPECIFY) RECONDITION FOR STORAGE

PLUG AND ABANDON _____ CLEAN OUT AND REPLUG _____
 TARGET FORMATION ORISKANY ESTIMATED DEPTH 2037
 WELL OPERATOR Columbia Gas Transmission Corp DESIGNATED AGENT RICHARD L. GOTY
 ADDRESS PO Box 1273, Charleston, W.V. 25325-1273 ADDRESS PO Box 1273, Charleston, W.V. 25325-1273

FORM NO. 2

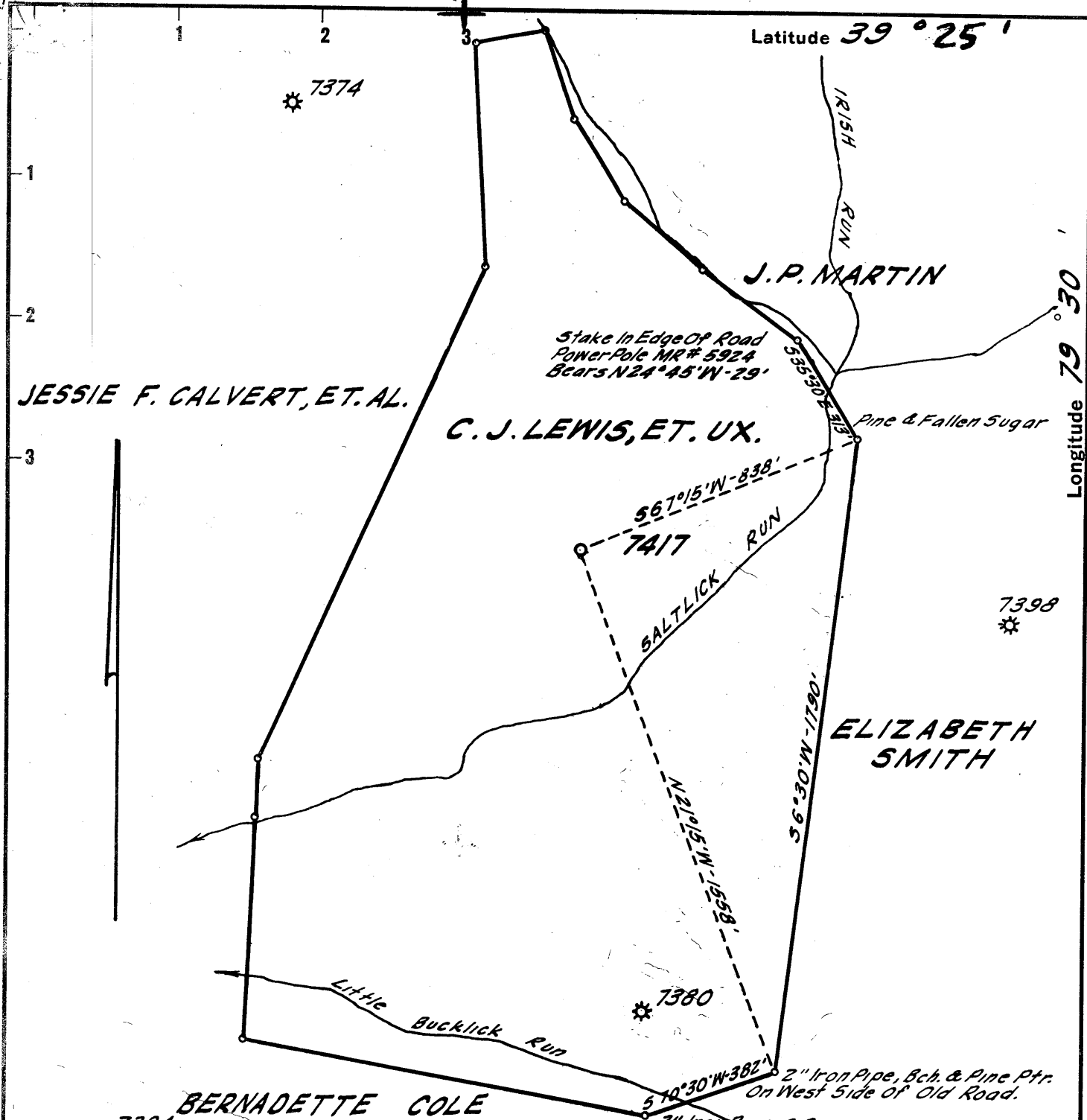
00-55567-10010001

PRESTON COUNTY NAME

PERMIT

077-0108-2

DEEP WELL



Degree Of Accuracy: One Part In 200
 Description Of Bench Mark:
 U.S. G. U. E. Bench Mark. Spike In Root
 Of Double White Oak On North Side Of Road
 About 800' Below Kinsinger Run
 Elev. 1676.70'

New Location
 Drill Deeper
 Abandonment MB F-13

6 NW (F13) *Seybert & Farrell*

0.02 S
 4.36 W

Company ATLANTIC SEABOARD CORP.
 Address CHARLESTON, W. VA.
 Farm C. J. LEWIS ET. UX.
 Tract _____ Acres 81 Lease No. AS-3994-B
 Well (Farm) No. _____ Serial No. X-76-7417
 Elevation (Spirit Level) 1859.39'
 Quadrangle KINGWOOD - EC
 County PRESTON District PORTLAND
 Engineer Seybert & Farrell
 Engineer's Registration No. 2529
 File No. 172-133 Drawing No. _____
 Date MARCH 14, 1963 Scale 1" = 400'

STATE OF WEST VIRGINIA
 DEPARTMENT OF MINES
 OIL AND GAS DIVISION
 CHARLESTON

WELL LOCATION MAP
 FILE NO. PRES-108

+ Denotes location of well on United States Topographic Maps, scale 1 to 62,500, latitude and longitude lines being represented by border lines as shown.
 - Denotes one inch spaces on border line of original tracing.

RECEIVED
Division of
Protection

JUN 7 1997

Permitting
Office of Oil & Gas

11/22/96
API # 47-077-00108

**State of West Virginia
Division of Environmental Protection
Section of Oil and Gas**

Well Operator's Report of Well Work

Farm name: Lewis, Ralph and Joann P. Operator well no.: 7417
LOCATION Elevation: 1860.31 Quadrangle: Terra Alta
District: Portland County: Preston
Latitude: 0 Feet South of 39 Deg. 25 Min. 0 Sec.
Longitude: 11150 Feet West of 79 Deg. 35 Min. 30 Sec.

Company: Columbia Gas Transmission
P.O. Box 1273
Charleston, WV 25325-1273
Agent: Richard L. Coty
Inspector: Phil Tracey
Permit Issued: 3/13/96
Well Work Commenced: 9/11/96
Well Work Completed: 10/28/96
Verbal Plugging
Permission granted on: N/A
Rotary Yes Cable N/A Rig
Total Depth (ft) 5036
Fresh water depths (ft) See previous records
Salt water depths (ft) See previous records
Is coal being mined in the area (Y/N)? N
Coal Depths (ft) N/A

Casing & Tubing Size	Used in Drilling	Left in Well	Cement Fill Up Cu. Ft.
20"	21'	21'	Surf. (Driven)
13 3/8"	403'	403'	Surf. 330 sxs
9 5/8"	1441'	195'	N/A 40 sxs
7"	4773'	4773'	Surf. 683 sxs*
4 1/2"	621'	621'	Liner** 120 sxs
2 3/8"	4861'	0'	removed

Open Flow Data

Producing formation Chert Pay zone depth (ft) 4750'-4862'

Gas: Initial open flow N/A MCF/d Oil: Initial open flow N/A Bbl/d
 Final open flow N/A MCF/d Final open flow N/A Bbl/d
 Time of open flow between initial and final tests N/A Hours
 Static rock Pressure N/A psig (surface pressure) after N/A Hours

Second producing formation Oriskany Pay zone depth (ft) 4895'-4985', 4993'-5002'

Gas: Initial open flow N/A MCF/d Oil: Initial open flow N/A Bbl/d
 Final open flow N/A MCF/d Final open flow N/A Bbl/d
 Time of open flow between initial and final tests N/A Hours
 Static rock Pressure N/A psig (surface pressure) after N/A Hours

NOTE: On the back of this form put the following: 1). Details of perforated intervals, fracturing or stimulating, physical change etc. 2). The well log which is a systematic detailed geological record of all formations including coal encountered by the wellbore.

Notes: * Also used 680 cu. ft. of Lite poz.
** 4 1/2" Liner run from 4321'-4968'

For: Columbia Gas Transmission Corp.
By: _____
Date: _____

State of West Virginia
Division of Environmental Protection
Section of Oil and Gas

Well Operator's Report of Well Work

The well was killed with a Baroid Barazan polymer mud system on 9/12/96. Then, 4861' of 2 3/8", 4.7 #/ft, 8rd. EUE tubing was pulled out of the hole and retired. The 13 3/8" slip on weld head was inspected and rewrapped. Atlas ran a gauge ring and junk basket to 4730'. Atlas also ran a GR/SBT tool. Atlas then sat a retrievable cast iron bridge plug at 4670". Atlas also ran a Vertilog from 4670' to the surface. The 7" casing looked good and did not need to be replaced. The expendables in the 13 3/8" slip on weld head were replaced. A new 13 3/8" x 7" adapter flange and secondary seal was installed and tested. The retrievable cast iron bridge plug was pulled out of the hole. A 6 1/8" bit was tripped into the hole on the end of 3 1/2" drill pipe and the fill in the hole was cleaned out from 4893'-5036'. Atlas then ran open hole logs including a Z-Density, GR/N, Sonic (MAC), CBIL and Hex Dip. Atlas took 11 rotary SWC's at 4986', 4981', 4968', 4962', 4948', 4920', 4917', 4896', 4897', 4792', 4788' and 4783'. Approximately 621' of 4 1/2", 11.6 #/ft, N-80 casing was run in the hole as a liner with the top of the liner at 4321' and the bottom of the liner at 4968'. (621' does not include the liner hanger assembly). The 4 1/2" liner was cemented with 25.6 bbbls (120 sxs) of Standard cement with additives. The bails on the WACO rig failed and the drill pipe string was dropped into the hole. The drill pipe was fished out of the hole. The cement in the hole was cleaned out to the bottom of the liner at 4968'. The open hole portion of the well was cleaned out to 5036'. (The liner was inadvertently set approximately 68' off bottom.) One cone from the bit had been lost in the hole when the drill string was dropped into the hole. A second cone was lost in the hole while cleaning out the hole to 5036'. Atlas perforated from 4989.5'-4998.5' Atlas made a second perforating run and perforated from 4965'-4985'. The perforating gun stuck in the hole. (This is when it was discovered that the 4 1/2" liner had been set 68' off bottom and the perforating gun had been detonated with part of the gun in the open hole and part of the gun in cased hole.) Atlas pulled out of the rope socket and rigged down. An attempt was made to recover the stuck perforating gun with Halliburton's 1 3/4" slick line unit. The fish was caught with an overshot, hydraulic and mechanical jars. The slick line tools pulled apart leaving some of the tools and the original fish in the hole. The slick line unit was rigged down. The well was killed a second time with the Baroid Barazan polymer mud system. The lost tools and stuck perforating gun were retrieved with an overshot and fishing assembly on 2 3/8" drill pipe. The well was swabbed to kick it off. Atlas finished the perforating of the Oriskany with perforations from 4965'-4945', 4945'-4925', 4925'-4905' and 4905'-4895'. The Chert was then perforated from 4862'-4842', 4842'-4822', 4822'-4802', 4802'-4782', 4782'-4762' and 4762'-4750'. All of the intervals were perforated with 3 3/8" EHSC, 21 gram, RDX charges phased at 60 degrees at 6 SPF. Halliburton pickled the 4 1/2" casing and hydroblasted the completion with 1 3/4" coiled tubing and 1500 gals of 7 1/2% SWIC acid. After the hydroblasting the Oriskany and Chert perforations were treated in 5' intervals with Halliburton's Selective Injection Packer and 500 gals of 7 1/2% FE acid with additives. After removing the coil tubing from the well it unloaded on its own. To clean up the well it was blown to a 500 bbl frac. tank. The well was placed back into service on 10/28/96.



STATE OF WEST VIRGINIA
DEPARTMENT OF MINES
OIL AND GAS DIVISION

Quadrangle Kingwood

Permit No. PRES. 108

WELL RECORD

Gas -
Oil or Gas Well Storage
(KIND)

Company <u>Atlantic Seaboard Corporation</u>	Casing and Tubing	Used in Drilling	Left in Well	Packers
Address <u>P. O. Box 1273 - Charleston, W. Va.</u>	Size			
Farm <u>C. J. Lewis, Et Ux</u> Acres <u>81</u>				
Location (waters) <u>Salt Lick Creek</u>				
Well No. <u>X-76-7417</u> Elev. <u>1859.39'</u>	<u>20"</u>	<u>21'</u>	<u>21'</u>	Kind of Packer <u>None</u>
District <u>Portland</u> County <u>Preston</u>	<u>13-3/8"</u>	<u>403.37'</u>	<u>403.37'</u>	Size of <u>None</u>
The surface of tract is owned in fee by _____	<u>9-5/8"</u>	<u>144'195'</u>	<u>195'</u>	Depth set _____
Mineral rights are owned by <u>John W. Markwood, et al</u>	<u>8 1/4"</u>	<u>4773'</u>	<u>4773'</u>	Perf. top _____
Address <u>Terra Alta, W. Va.</u>	<u>5 3/16"</u>			Perf. bottom _____
Drilling commenced <u>May 13, 1963</u>				Perf. top _____
Drilling completed <u>June 2, 1963</u>				Perf. bottom _____
Date Shot <u>--</u> From <u>--</u> To <u>--</u>				Liners Used _____
With <u>--</u>				Perf. top _____
Open Flow /10ths Water in <u>--</u> Inch				Perf. bottom _____
/10ths Merc. in <u>--</u> Inch				
Volume <u>See reverse</u> Cu. Ft.				
Rock Pressure <u>Storage</u> lbs. hrs.				
Oil <u>--</u> bbls., 1st 24 hrs.				

CASING CEMENTED _____ SIZE _____ No. Ft. _____ Date _____

COAL WAS ENCOUNTERED AT _____ FEET _____ INCHES

_____ FEET _____ INCHES _____ FEET _____ INCHES

_____ FEET _____ INCHES _____ FEET _____ INCHES

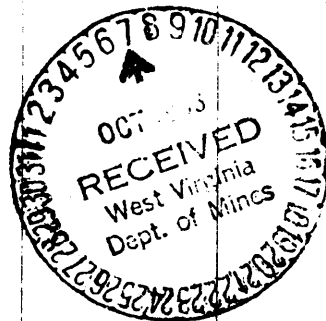
WELL FRACTURED --

RESULT AFTER TREATMENT See reverse

ROCK PRESSURE AFTER TREATMENT Storage

Fresh Water _____ Feet _____ Salt Water _____ Feet _____

Formation	Color	Hard or Soft	Top	Bottom	Oil, Gas or Water	Depth	Remarks
Siltstone & Shale			0	4197	4730	4894	5020
Tully Lime			4197	4235	1859	1859	1859
Siltstone & Shale			4235	4730	2891	3035	3161
Onondaga Lime			4730	4745			
Chert			4745	4885			
Shale			4885	4894			
Oriskany			4894	5020			
Helderberg			5020				
Total Depth				5037			



Formation	Color	Hard or Soft	Top 17	Bottom	Oil, Gas or Water	Depth Found	Remarks
Casing & Cement:							
20" Road Casing (conductor) - 21' Driven into 17½" drilled hole 5-13-63 - Not cemented.							
13-3/8", 48#/ft. H-40 casing - 403' (threads on) set @409' (KB). Cemented to surface w/330 sacks neat cement and 2% Ca Cl - 5-17-63 - Dowell							
9-5/8", 32#/ft H-40 casing 1441' (threads on) set @1443' (KB). Cemented 40 sacks Class A Neat cement with 2% Ca Cl - 5-21-63 Dowell.							
Backed off 9-5/8" Left and Right Collar and pulled 1246' (threads on) 9-5/8" casing. Left 195' (threads on) 9-5/8" Casing in well 5-27-63.							
Top of left and right nipple left in well was rolled out. 5-28-63.							
7", 23#/ft. J-55 casing - 4773' (threads on) set @4751' (KB). Two stage cemented to surface. 1st Stage - 83 cu. ft. "Litepoz" & 83 sacks Class cement tailed w/170 gallons of "Cealment" (Latex Cement). 2nd stage - 600 cu. ft. "Litepoz" and 600 sacks Class A cement tailed w/20 sacks of regular cement and 2% Ca Cl - 5-28-63 - Dowell.							
Stimulation:							
5000 gal. 15% Retarded HCl Acid; 5000 gal. 15% Regular HCl Acid; 5000 gal. water overflush and 145,000 scf of N ₂ - 6-13-63 - Dowell							
Production:							
During drilling: Chert gas tested 1,835 Mcf - 5-31-63							
Chert & Oriskany gas tested 11,238 Mcf - 6-2-63							
Before Acid - 21,000 Mcf @2350 psig (Back Pressure Test) 6-6-63							
After Acid - 82,000 Mcf @2350 psig (Back Pressure Test) 7-10-63							
Final Shut-in date: 7-10-63							

Date OCT 3 1963, 19

APPROVED ATLANTIC SEABOARD CORPORATION, Owner

By *H. Maffey* *Supt*
(Title)



STATE OF WEST VIRGINIA
DEPARTMENT OF MINES
OIL AND GAS DIVISION

Quadrangle Kingwood

Permit No. PIES. 108

WELL RECORD

Oil or Gas Well Gas - Storage

Company Atlantic Seaboard Corporation

Address P. O. Box 1273 - Charleston, W. Va.

Farm C. J. Lewis, Et Ux Acres 81

Location (waters) Salt Lick Creek

Well No. X-7C-7417 Elev. 1859.30'

District Portland County Preston

The surface of tract is owned in fee by _____

Address _____

Mineral rights are owned by _____

Address _____

Drilling commenced May 13, 1963

Drilling completed June 2, 1963

Date Shot -- From -- To --

With --

Open Flow /10ths Water in -- Inch

/10ths Merc. in -- Inch

Volume See reverse Cu. Ft.

Rock Pressure Storage lbs. _____ hrs.

Oil -- bbls., 1st 24 hrs.

WELL ACIDIZED See Reverse

WELL FRACTURED --

RESULT AFTER TREATMENT See reverse

ROCK PRESSURE AFTER TREATMENT Storage

Fresh Water _____ Feet

Salt Water _____ Feet

Formation	Color	Hard or Soft	Top	Bottom	Oil, Gas or Water	Depth	Remarks
Siltstone & Shale			0	4197			
Tully Lime			4197	4235			
Siltstone & Shale			4235	4730			
Onondaga Lime			4730	4745			
Chert			4745	4885			
Shale			4885	4894			
Oriskany			4894	5020			
Holderberg			5020				
Total Depth				5037			

(over)

0000 0317

Formation	Color	Hard or Soft	Top	Bottom	Oil, Gas or Water	Depth Found	Remarks
Casing & Cement:							
20" Road Casing (conductor) - 21' Driven into 17 1/2" drilled hole 5-13-63 - Not cemented.							
13-3/8", 48#/ft. H-40 casing - 403' (threads on) set 3409' (KB). Cemented to surface w/330 sacks neat cement and 2% Ca Cl - 5-17-63 - Dowell							
9-5/8", 32#/ft H-40 casing 1441' (threads on) set 31443' (KB). Cemented 40 sacks Class A Neat cement with 2% Ca Cl - 5-21-63 Dowell.							
Backed off 9-5/8" left and right collar and pulled 1210' (threads on) 9-5/8" casing. Left 195' (threads on) 9-5/8" casing in well 5-27-63.							
Top of left and right nipple left in well was rolled out. 5-28-63.							
7", 23#/ft. J-55 casing - 4773' (threads on) set 34751' (KB). Two stage cemented to surface. 1st Stage - 83 cu. ft. "Litepoz" & 83 sacks Class A cement tailed w/170 gallons of "Cealment" (Latex Cement). 2nd stage - 600 cu. ft. "Litepoz" and 600 sacks Class A cement tailed w/20 sacks of regular cement and 2% Ca Cl - 5-28-63 - Dowell.							
Stimulation:							
5000 gal. 15% Retarded HCl Acid; 5000 gal. 15% Regular HCl Acid; 5000 gal. water overflush and 145,000 scf of N ₂ - 6-13-63 - Dowell							
Production:							
During drilling: Chert gas tested 1,835 Mcf - 5-31-63							
Chert & Oriskany gas tested 11,238 Mcf - 6-2-63							
Before Acid - 21,000 Mcf 2350 psig (Back Pressure Test) 6-6-63							
After Acid - 82,000 Mcf 2350 psig (Back Pressure Test) 7-10-63							
Final Shut-in date: 7-10-63							

Date OCT 3 1963, 19__

APPROVED _____
 ATLANTIC SEABOARD CORPORATION
 By [Signature] Supr.
 (Title)

4888 0512

**STATE OF WEST VIRGINIA
DEPARTMENT OF ENERGY, DIVISION OF OIL AND GAS
WELL WORK PERMIT APPLICATION**

- 1) Well Operator: COLUMBIA GAS TRANSMISSION CORP. 10450 (5) 637
- 2) Operator's Well Number: 7417
- 3) Elevation: 1860.31
- 4) Well type: (a) Oil or Gas
 - (b) If Gas: Production Underground Storage
 - Deep Shallow
- 5) Proposed Target Formation(s): CHERT-ORISKANY (WORKOVER Drill Deeper)
- 6) Proposed Total Depth: 5080 feet
- 7) Approximate fresh water strata depths: 250' (Est.)
- 8) Approximate salt water depths: 1200' (Est.)
- 9) Approximate coal seam depths: None
- 10) Does land contain coal seams tributary to active mine? Yes / No
- 11) Proposed Well Work: KILL WELL; REMOVE TUBING; INSTALL NEW WELLHEAD; Drill Deeper
- 12) THROUGH ORISKANY; LOG; RUN 4 1/2" LINER; CEMENT; PERFORATE; ACIDIZE/ FRACTURE.

Issued 03/13/96
Expires 03/13/98
RECEIVED
Environmental Protection
MAR 11 1998
Office of Oil & Gas Permitting

CASING AND TUBING PROGRAM

TYPE	SPECIFICATIONS			FOOTAGE INTERVALS		CEMENT
	Size	Grade	Weight per ft.	For drilling	Left in well	
Conductor	20"	Reed	48lb	21'	21'	Driven
Fresh Water	13-3/8"	H-40		403'	403'	300 SKs to Surf.
Coal						
Intermediate	9 5/8"	H-40	32lb	1741'	195'	40 SKs
Production	7"	J-55	23lb	4773'	4773'	1700 SKs to Surf.
Tubing	*2 3/8"	J-55	4.7lb		5000'	
Liners	4 1/2"	J-55	12.6lb			Volume to be determined

PACKERS : Kind NONE *Tubing to be Removed.
 Sizes _____
 Depths set _____

For Division of Oil and Gas Use Only

Fee(s) paid: Well Work Permit Reclamation Fund WPCP
 Plat WW-9 WW-2B Bond Blanket Agent

6260/31

RECEIVED
WV Division of
Environmental Protection

077-0108-W

FORM WW-2B

JUN 22 1995

Page 1 of 1

STATE OF WEST VIRGINIA
DEPARTMENT OF ENERGY, DIVISION OF OIL AND GAS
Office of Oil & Gas WELL WORK PERMIT APPLICATION

20827

- 1) Well Operator: COLUMBIA GAS TRANSMISSION CORP. 10450 ⑤ 637
- 2) Operator's Well Number: 7417 3) Elevation: 1860.31
- 4) Well type: (a) Oil / or Gas /
(b) If Gas: Production / Underground Storage /
Deep / Shallow /
- 5) Proposed Target Formation(s): CHERT-ORISKANY (WORKOVER)
- 6) Proposed Total Depth: 5037 feet (ORIGINAL T.D.)
- 7) Approximate fresh water strata depths: 250' (EST.)
- 8) Approximate salt water depths: 1200' (EST.)
- 9) Approximate coal seam depths: NONE
- 10) Does land contain coal seams tributary to active mine? Yes / No /
- 11) Proposed Well Work: KILL WELL; CLEAN OUT TO ORIGINAL T.D.; STABILIZE OPEN HOLE SECTION W/SANDLOCK 5; ACIDIZE; RUN NEW 2-3/8" TUBING; PARTIALLY REPLACE WELLHEAD.
- 12)

CASING AND TUBING PROGRAM

TYPE	SPECIFICATIONS			FOOTAGE INTERVALS		CEMENT
	Size	Grade	Weight per ft.	For drilling	Left in well	Fill-up (cu. ft.)
Conductor	20"	ROAD	CASING	21'	21'	DRIVEN
Fresh Water	13-3/8"	H	48	403'	403'	330 SKS. (TO SURFACE)
Coal						
Intermediate	9-5/8"	H	32	1441'	195'	40 SKS.
Production	7"	J	23	4773'	4773'	TO SURFACE 1700 SKS
Tubing	2-3/8"	J	4.7		5000	
Liners						

PACKERS : Kind NONE
Sizes _____
Depths set _____

For Division of Oil and Gas Use Only

6260
87

Fee(s) paid: Well Work Permit Reclamation Fund WPCP
 Plat WW-9 WW-2B Bond _____ Agent
(Type)

**STATE OF WEST VIRGINIA
DEPARTMENT OF ENERGY, DIVISION OF OIL AND GAS
WELL WORK PERMIT APPLICATION**

RECEIVED
JUL 05 1983
Office of Oil & Gas
Permitting
Environmental Protection
Elevation: 1860.31

0827

- 1) Well Operator: COLUMBIA GAS TRANSMISSION CORP.
- 2) Operator's Well Number: 7417
- 4) Well type: (a) Oil / or Gas /
(b) If Gas: Production / Underground Storage /
Deep / Shallow /
- 5) Proposed Target Formation(s): CHERT-ORISKANY (WORKOVER)
- 6) Proposed Total Depth: 5037 feet (ORIGINAL T.D.)
- 7) Approximate fresh water strata depths: 250' (EST.)
- 8) Approximate salt water depths: 1200' (EST.)
- 9) Approximate coal seam depths: NONE
- 10) Does land contain coal seams tributary to active mine? Yes / No /
- 11) Proposed Well Work: KILL WELL; CLEAN OUT TO ORIGINAL T.D.; STABILIZE OPEN HOLE SECTION W/SANDLOCK 5; ACIDIZE; RUN NEW 2-3/8" TUBING; PARTIALLY REPLACE WELLHEAD.
- 12)

CASING AND TUBING PROGRAM

TYPE	SPECIFICATIONS			FOOTAGE INTERVALS		CEMENT
	Size	Grade	Weight per ft.	For drilling	Left in well	Fill-up (cu. ft.)
Conductor	20"	ROAD	CASING	21'	21'	DRIVEN
Fresh Water	13-3/8"	H	48	403'	403'	330 SKS. (TO S FA
Coal						
Intermediate	9-5/8"	H	32	1441'	195'	40 SKS.
Production	7"	J	23	4773'	4773'	TO SURFACE 1700 SKS
Tubing	2-3/8"	J	4.7		5000	
Liners						

PACKERS : Kind NONE
 Sizes _____
 Depths set _____

For Division of Oil and Gas Use Only

Fee(s) paid: Well Work Permit Reclamation Fund WPCP
 Plat WW-9 WW-2B Bond _____ Agent
 (Type)

RECEIVED
WV Division of
Environmental Protection

JUN 22 1995

Permitting
Office of Oil & Gas

STATE OF WEST VIRGINIA
DEPARTMENT OF ENERGY, DIVISION OF OIL AND GAS

NOTICE AND APPLICATION FOR A WELL WORK PERMIT

- 1) Date: 3/16/95
- 2) Operator's well number 7417
- 3) API Well No: 47 - 077 - 00108 - W
State - County - Permit

4) Surface Owner(s) to be served:
 (a) Name RALPH E & JOANN P. LEWIS
 Address RT. 1, BOX 98-B
TERRA ALTA, WV 26764

(b) Name _____
 Address _____

(c) Name _____
 Address _____

5) (a) Coal Operator:
 Name _____
 Address _____

(b) Coal Owner(s) with Declaration
 Name RALPH E. & JOANN P. LEWIS
 Address RT. 1, BOX 98-B
TERRA ALTA, WV 26764

Name _____
 Address _____

6) Inspector PHILLIP TRACY
 Address ROUTE 2, BOX 37-A
MONTROSE, WV 26283
 Telephone (304)-636-8798

(c) Coal Lessee with Declaration
 Name _____
 Address _____

TO THE PERSON(S) NAMED ABOVE TAKE NOTICE THAT:

_____ Included is the lease or leases or other continuing contract or contracts by which I hold the right to extract oil and gas OR
 Included is the information required by Chapter 22B, Article 1, Section 8(d) of the Code of West Virginia (see page 2)

I certify that as required under Chapter 22B of the West Virginia Code I have served copies of this notice and application, a location plat, and accompanying documents pages 1 through _____ on the above named parties, by:

- _____ Personal Service (Affidavit attached)
- Certified Mail (Postmarked postal receipt attached)
- _____ Publication (Notice of Publication attached)

I have read and understand Chapter 22B and 38 CSR 11-18, and I agree to the terms and conditions of any permit issued under this application.

I certify under penalty of law that I have personally examined and am familiar with the information submitted on this application form and all attachments, and that based on my inquiry of those individuals immediately responsible for obtaining the information, I believe that the information is true, accurate, and complete.

I am aware that there are significant penalties for submitting false information, including the possibility of fine and imprisonment.

OFFICIAL SEAL
 NOTARY PUBLIC
 PHILLIP M. BRIDGES
 COLUMBIA GAS TRANSMISSION CORP.
 P. O. BOX 1273 - CHARLESTON, WV 25325
 MY COMMISSION EXPIRES 11-20-2001

Well Operator COLUMBIA GAS TRANSMISSION CORP.
 By: Richard L. Colby
 Its: MANAGER, WELL SERVICES
 Address P. O. BOX 1273
CHARLESTON, WV 25325-1273
 Telephone (304) 357-3034

Subscribed and sworn before me this 16th day of May, 1995

Phillip M. Bridges

Notary Public

My commission expires November 20, 2001