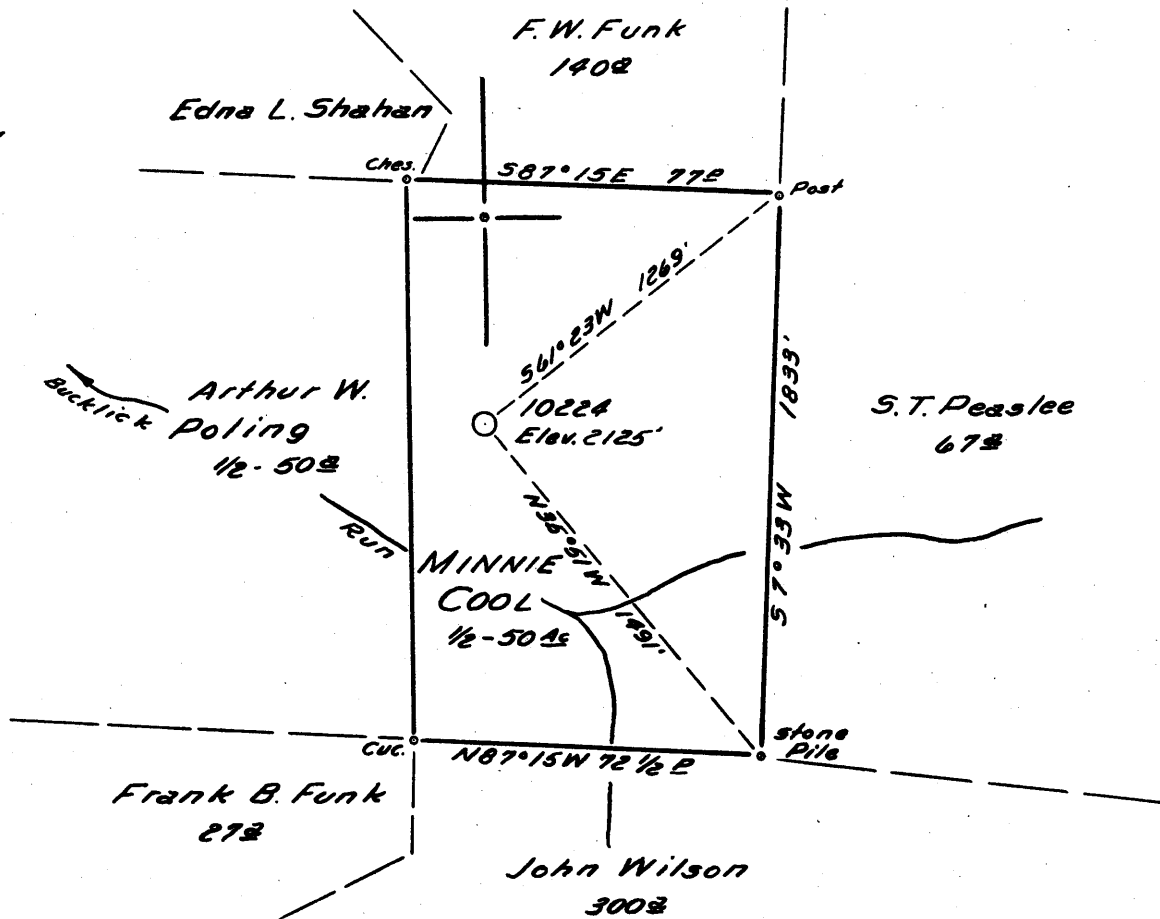


Latitude 39° 20'

Longitude 79° 40'



4.22 S.  
3.73 W.

9 SW (F-13)

New Location   
 Drill Deeper   
 Abandonment

Map Sheet 1134-G-1; F.B. 1206, P26-29

Company HOPE NATURAL GAS CO.  
 Address CLARKSBURG, W.VA.  
 Farm COOL - JONES  
 Tract 1/2-50 Acres 12-328 Lease No. 66258  
 Well (Farm) No. \_\_\_\_\_ Serial No. 10224  
 Elevation (Spirit Level) 2125'  
 Quadrangle KINGWOOD - SW  
 County PRESTON District RENO  
 Engineer Guy H. Bradley  
 Engineer's Registration No. 2425  
 File No. \_\_\_\_\_ Drawing No. \_\_\_\_\_  
 Date 2/6/59 Scale 1" = 40 Poles

STATE OF WEST VIRGINIA  
 DEPARTMENT OF MINES  
 OIL AND GAS DIVISION  
 CHARLESTON

WELL LOCATION MAP  
 FILE NO. Pres-80

+ Denotes location of well on United States Topographic Maps, scale 1 to 62,500, latitude and longitude lines being represented by border lines as shown.

- Denotes one inch spaces on border line of original tracing.

No Sumter 200 Deep Well



STATE OF WEST VIRGINIA  
DEPARTMENT OF MINES  
OIL AND GAS DIVISION

Quadrangle KINGWOOD

Permit No. FRES-80

**WELL RECORD**

Oil or Gas Well Gas  
(KIND)

Company Hope Natural Gas Company  
Address Clarksburg, W. Va.  
Farm Cool - Jones Acres 378  
Location (waters) \_\_\_\_\_  
Well No. 10224 Elev. 2125'  
District Reno County Preston  
The surface of tract is owned in fee by \_\_\_\_\_  
Address \_\_\_\_\_  
Mineral rights are owned by \_\_\_\_\_  
Address \_\_\_\_\_  
Drilling commenced April 23, 1959  
Drilling completed August 7, 1959  
Date Shot Not From \_\_\_\_\_ To \_\_\_\_\_  
With \_\_\_\_\_  
Open Flow /10ths Water in \_\_\_\_\_ Inch  
/10ths Merc. in \_\_\_\_\_ Inch  
Volume 9.977 M Cu. Ft.  
Rock Pressure 1625# lbs. \_\_\_\_\_ hrs.  
Oil \_\_\_\_\_ bbls., 1st 24 hrs.  
WELL ACIDIZED No  
WELL FRACTURED 8-14-59

Casing and Tubing	Used in Drilling	Left in Well	Packers
Size			Kind of Packer
16			
13	411	411	
10	495	495	Size of
8 1/4	4407	4407	
6 3/4	4757	4757	Depth set
5 3/16			
3			Perf. top
2			Perf. bottom
Liners Used			Perf. top
			Perf. bottom

CASING CEMENTED SIZE No. Ft. Date  
7" casing cemented with 100 bags cement  
COAL WAS ENCOUNTERED AT FEET INCHES  
FEET None INCHES FEET INCHES  
FEET INCHES FEET INCHES

RESULT AFTER TREATMENT 27,312 M  
ROCK PRESSURE AFTER TREATMENT Same  
Fresh Water 1261 Feet Salt Water None Feet

Formation	Color	Hard or Soft	Top	Bottom	Oil, Gas or Water	Depth	Remarks
Clay			0	15			
Brown Shale			15	70	4736	4931	5023
Slate			70	160	2125	2125	2125
Lime			160	202	2611	2806	2898
Slate			202	225			
Lime			225	440			
Slate			440	1240			
Wenon			1240	1413	Water	1261	Fresh
Slate & Shell			1413	3605			
Lime			3605	3730			
Brown Shale			3730	3931			
Lime			3931	3967			
Dark Shale			3967	4172			
Black Shale			4172	4330			
TULLY LIMESTONE			4330	4363			
Dark Shale			4363	4674			
Black Shale			4674	4720			
Lime			4720	4736			
Brown Break			4736	4762			
ONONDAGA			4736	4762			
CHERT → NEEDMORE?			4762	4931			
ORISKANY			4931	5023	Gas	4939	ROCK
HELDERBERG LIME			5023	5086			
Total Depth			485	5086			



November 4, 1959  
Jack Bailey  
Hope Natural Gas Company