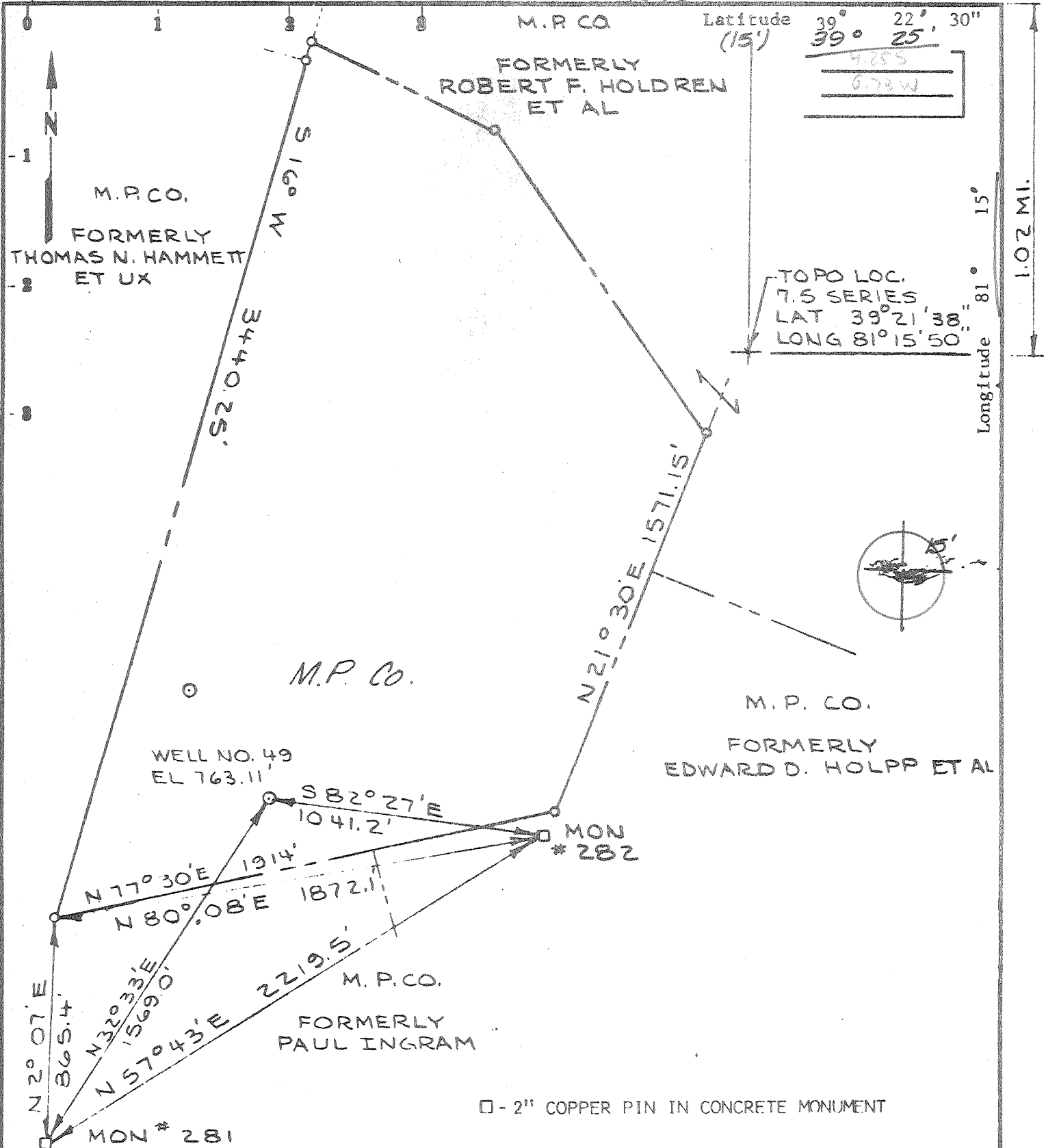
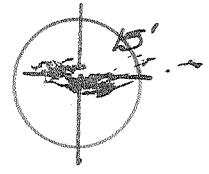


0.72 MI. 4/19/78



TOPO LOC.  
7.5 SERIES  
LAT 39° 21' 38"  
LONG 81° 15' 50"



□ - 2" COPPER PIN IN CONCRETE MONUMENT

- Fracture....
- Redrill.....
- New Location
- Drill Deeper
- Abandonment

Source of Elevation U.S.G.S. B.M. #B132 1957; E1. 634.41

I, the undersigned, hereby certify that this map is correct to the best of my knowledge and belief and shows all the information required by paragraph 6 of the rules and regulations of the oil and gas section of the mining laws of West Virginia.

Minimum accuracy, one part in 1790'

Company Monongahela Power Company  
 Address 1310 Fairmont Ave., Fairmont, W.Va.  
 Farm MP Co (Formerly Mary E. Hammat, Et Al)  
 Tract \_\_\_\_\_ Acres 107<sup>+</sup> Lease No. \_\_\_\_\_  
 Well (Farm) No. 49 Serial No. EC  
 Elevation (Spirit Level) 763.11' MARIETTA 15'  
 Quadrangle Willow Island, W.Va. - Ohio  
 County Pleasants District Grant  
 Surveyor or Engineer David J. Kennedy  
 Surveyor's or Engineer's Registration No. W.Va. LLS #32  
 File No. \_\_\_\_\_ Drawing No. \_\_\_\_\_  
 Date \_\_\_\_\_ Scale 1"=500'

STATE OF WEST VIRGINIA  
DEPARTMENT OF MINES  
OIL AND GAS DIVISION  
CHARLESTON

WELL LOCATION MAP  
FILE NO. PLEAS-1139-A

+ Denotes location of well on United States Topographic Maps, scale 1 to 24,000 latitude and longitude lines being represented by border lines as shown.

- Denotes one inch spaces on border line of original tracing.

47-073 MAY 15 1978